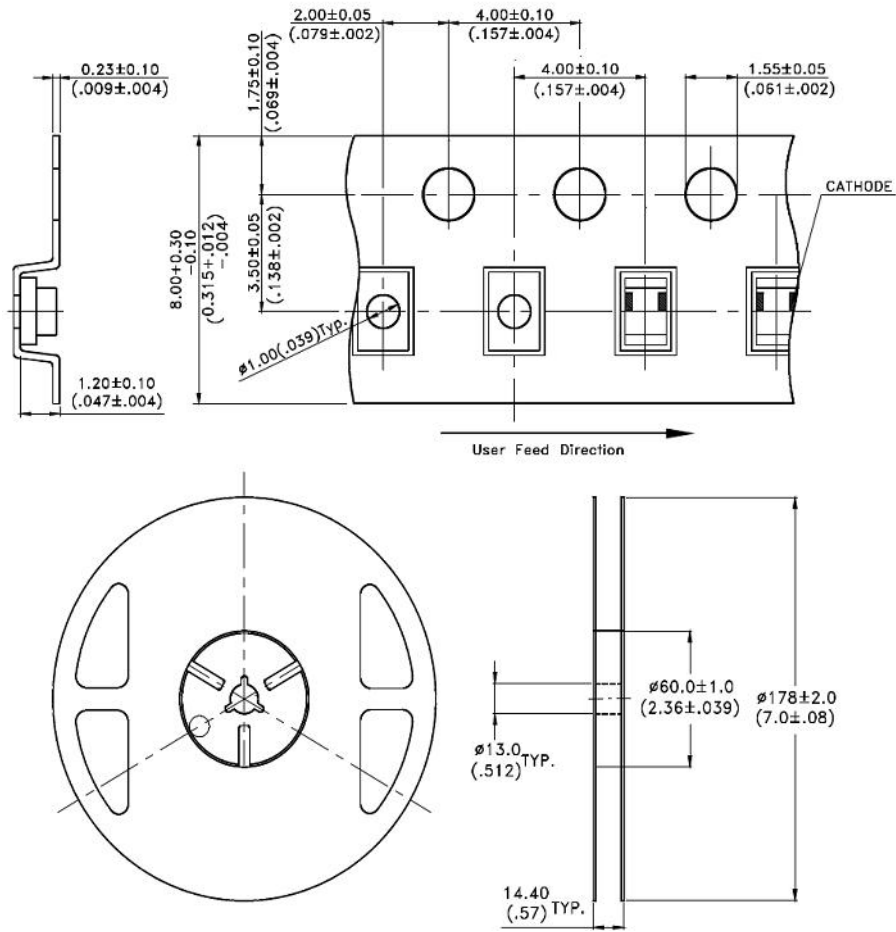


RECOMMENDED PAD LAYOUT

Package Dimensions Of Tape And Reel

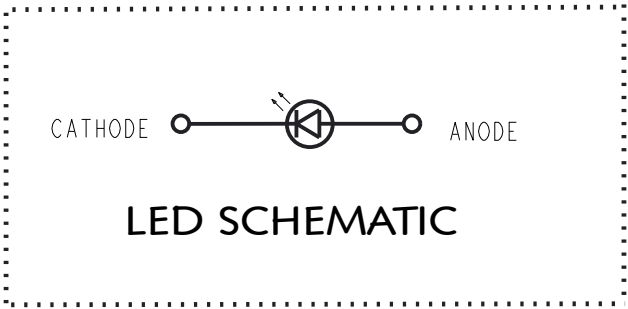
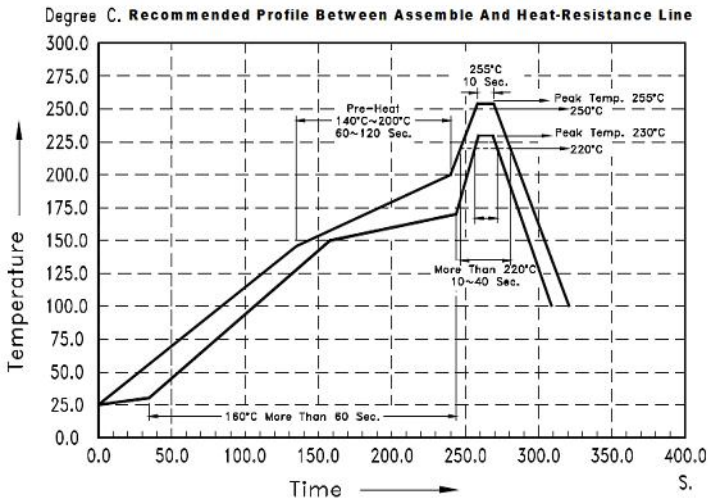


OPERATING CHARACTERISTICS AT 25°C AMBIENT											
COLOR	LUMINOUS INTENSITY				PEAK WAVELENGTH	DOMINANT WAVELENGTH	FORWARD VOLTAGE		REVERSE CURRENT		VIEWING ANGLE
	I _F	MIN (mcd)	TYP (mcd)	MAX (mcd)	TYP	TYP	TYP (V)	MAX (V)	V _R	MAX (μA)	TYP (DEG)
RED	10 mA	2	6	11.2	630	621	2.0	2.6	5V	10	130

ABSOLUTE MAXIMUM RATINGS AT 25°C AMBIENT	COLOR	UNITS
	RED	
POWER DISSIPATION	100	mW
FORWARD CURRENT	30	mA
PEAK FORWARD CURRENT (LESS THAN OR EQUAL TO 1/20 DUTY CYCLE, 1kHz)	120	mA
DERATING LINEAR FROM 25°C	0.6	
ELECTROSTATIC DISCHARGE	2000	V
REVERSE VOLTAGE	5	V
STORAGE TEMPERATURE	-40 TO +85	°C
OPERATING TEMPERATURE	-30 TO +85	°C

- NOTES:
- PARTS ARE TO BE SUPPLIED IN 8mm CARRIER TAPE ON 7" REEL 3000 PCS PER REEL.
 - PIN NUMBERS ARE FOR REFERENCE ONLY, DESIGNATION NON EXISTENT ON PART
 - THIS ASSEMBLY CONTAINS ELECTROSTATIC DISCHARGE DEVICES (ESDS). MAINTAIN ALL PRECAUTIONARY MEASURES DURING ASSEMBLY, HANDLING AND STORAGE IN ACCORDANCE WITH IPC-A-610
 - THIS PRODUCT IS ROHS COMPLIANT EACH BAG IS TO BE MARKED WITH ROHS COMPLIANT LABEL OR EQUIVALENT MARKINGS. LED MUST BE Pb FREE.
 - MOISTURE SENSITIVITY LEVEL IS 3
 - DIALIGHT. PART NO.: 597-3006-607F

REV	ECN NO	REVISIONS	DRN	CKD	APP	QA	CM	DATE
A	126074	NEW RELEASE	LD	CS				1-14-25
B	129955	UPDATED OPERATING & STORAGE TEMPERATURE	LD	CS				4-25-25



THIS DRAWING AND THE CONTENTS HEREIN ARE CONFIDENTIAL AND THE SOLE PROPERTY OF DIALIGHT CORP. REPRODUCTION OF THIS DRAWING OR CONSTRUCTION OF ANY PARTS WITHIN THIS DRAWING ARE FORBIDDEN WITHOUT THE WRITTEN CONSENT OF DIALIGHT CORP.											
DIALIGHT CORP INTERNAL REFERENCE ONLY = 3D MODEL : 4500597300667-A.1											
SCALE: 32.000						DRAWING NUMBER			REV		
ALL DIM's: INCH (mm)											
TOLERANCES: UNLESS OTHERWISE SPECIFIED						C-18793			B		
FRACTIONS: ±1/64						TITLE					
DECIMALS (.XX): ±.01						0805 SMD LED					
DECIMALS (.XXX): ±.005						MATERIAL					
DECIMALS (.XXX): ±.0005											
ANGLES: ±1°											
FINISH											
FSCM 83330											
						SHEET 1 OF 1			FAMILY TABLE:		