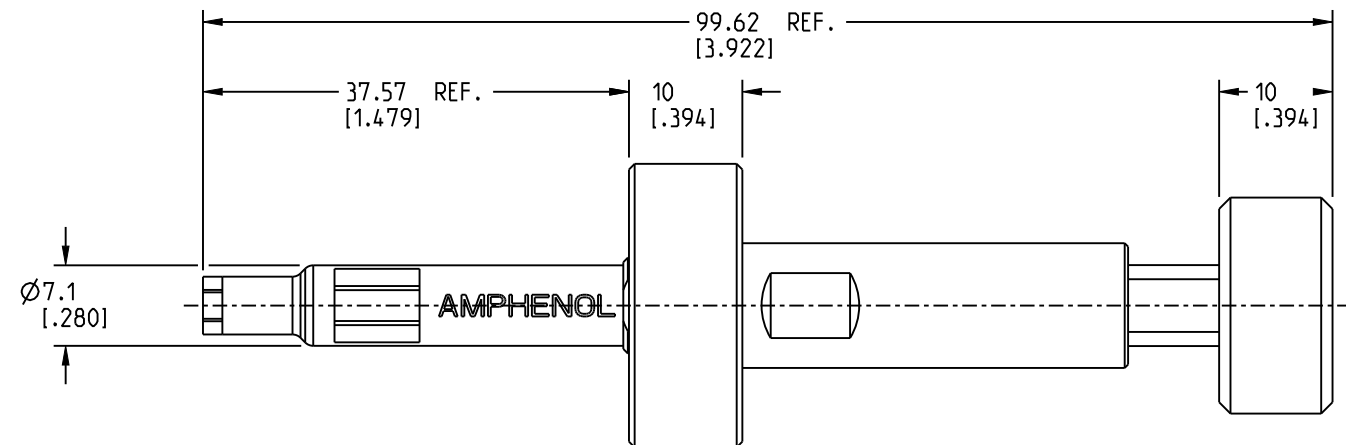
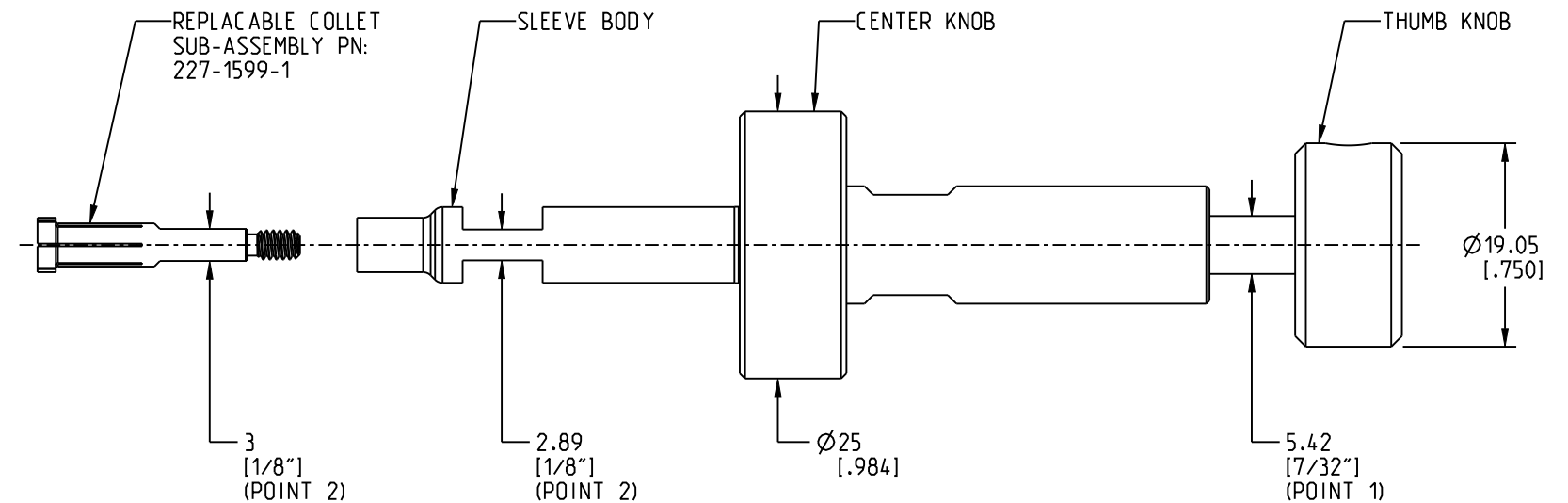
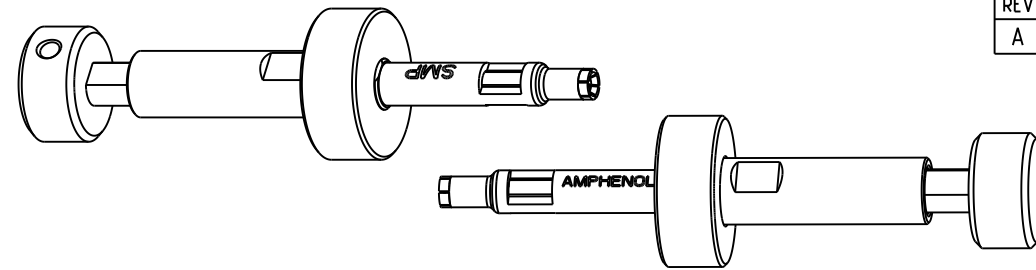
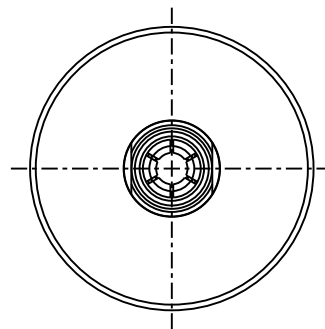


1. MATERIALS AND FINISHES:
SLOTTED BODY - BeCu, NICKEL PLATED
BODIES - BRASS, NICKEL PLATED
KNOBS - DELRIN, BLACK

3. PACKAGING:
A. QUANTITY: SINGLE PACK
B. MARKING: BAG TO BE MARKED
"AMPHENOL, 227-1599, AND DATE CODE"

5. TO INSERT BULLET INTO SMP PLUG ASSEMBLY:
 - A. DEPRESS THUMB KNOB UNTIL BOTTOMED COMPLETELY, RESULTING IN FULLY OPEN COLLET.
 - B. INSERT SMP BULLET INTO SLOTTED COLLET UNTIL BOTTOMED
 - C. RELIEVE PRESSURE FROM THUMB KNOB AND INSERT BULLET INTO SMP PLUG ASSEMBLY.
 - D. DEPRESS THUMB KNOB UNTIL BOTTOMED COMPLETELY TO RELEASE SMP BULLET FROM TOOL

6. TO REPLACE COLLET SUB-ASSEMBLY:
 - A. ALIGN FLATS ON COLLET SUB-ASSEMBLY WITH FLATS ON SLEEVE BODY AT POINT 2
 - B. LOOSEN COLLET SUB-ASSEMBLY WITH 7/32" WRENCH AT POINT 1 AND 1/8" WRENCH AT POINT 2
 - C. TIGHTEN SLOTTED COLLET SUB-ASSEMBLY TO 7 TO 10 IN-LBS WITH 7/32" WRENCH AT POINT 1 AND 1/8" WRENCH AT POINT 2



| REVISIONS | | | | |
|-----------|-----------------|-----------|-----|----|
| REV | DESCRIPTION | DATE | ECN | BY |
| A | RELEASE TO MFG. | 30-SEP-25 | | SH |

ALL OTHER SHEETS ARE FOR INTERNAL USE ONLY

NOTICE: These drawings, specifications, or other data (1) are, and remain the property of Amphenol corp (2) must be returned upon request; and (3) are confidential and not to be disclosed to any person other than those to whom they are given by Amphenol Corp. The furnishing of these drawings, specifications, or other data by Amphenol Corp., or to any other person to anyone for any purpose is not to be regarded by implication or otherwise in any manner licensing, granting rights to permitting such holder or any other person to manufacture, use or sell any product, process or design, patented or otherwise, that may in any way be related to or disclosed by said drawings, specifications, or other data.

UNLESS OTHERWISE SPECIFIED
DIMENSIONS ARE METRIC (INCHES) AND TOLERANCES ARE:

| | |
|-------------------------|---------------------------|
| <0.5mm = ±0.05mm | [<0.020 = ±0.002] |
| 0.5 - 6mm = ±0.1mm | [0.020 - 0.236 = ±0.004] |
| >6.00 - 30mm = ±0.2mm | [>0.236 - 1.181 = ±0.008] |
| >30.00 - 120mm = ±0.3mm | [>1.181 - 4.725 = ±0.012] |

| | |
|---|------------|
| - | ENGR.1 |
| | L. PARENTE |

DATE 23-SEP-25

SHEET NO. 2 OF 2

SCALE: 1.5:1.0

B

A

THIRD ANGLE PROJ.

| | |
|-----------|----------|
| REFERENCE | 227-1598 |
|-----------|----------|

| | |
|------|-------|
| EAR# | 12640 |
|------|-------|

 ANGLES = $\pm 1^\circ$

5

4

3

2

1