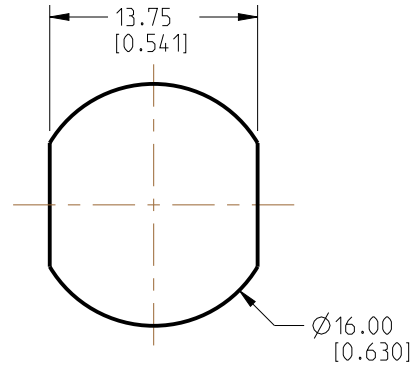
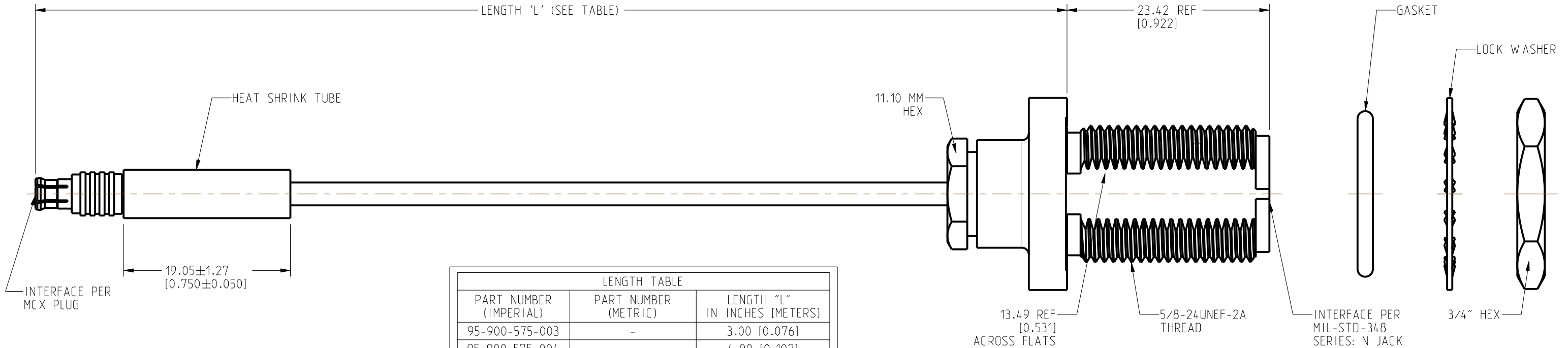


1. MATERIALS AND FINISHES:  
MCX STR PLUG - BeCu, GOLD PLATING  
N STR BHD JACK IP 67 - BRASS, NICKEL PLATING  
CABLE - RG 174
2. ELECTRICAL:  
A. IMPEDANCE: 50 OHM
3. PACKAGING:  
A. QUANTITY: SINGLE PACK  
B. MARKING: BAG TO BE MARKED  
"AMPHENOL RF, 95-900-575-XXX AND DATE CODE"



A diagram of a micrometer screw gauge with a scale of 0.500. It features a cylindrical body with a threaded rod and a conical ratchet stop at the end. The text "SCALE 0.500" is printed below the rod.



LENGTH TABLE		
PART NUMBER (IMPERIAL)	PART NUMBER (METRIC)	LENGTH "L" IN INCHES [METERS]
95-900-575-003	-	3.00 [0.076]
95-900-575-004	-	4.00 [0.102]
95-900-575-005	-	5.00 [0.127]
95-900-575-006	-	6.00 [0.152]
95-900-575-007	-	7.00 [0.178]
95-900-575-008	-	8.00 [0.203]
95-900-575-009	-	9.00 [0.229]
95-900-575-010	-	10.00 [0.254]
95-900-575-011	-	11.00 [0.279]
95-900-575-012	-	12.00 [0.305]
95-900-575-018	-	18.00 [0.457]
95-900-575-024	-	24.00 [0.610]
95-900-575-036	-	36.00 [0.914]
-	95-900-575M100	39.37 [1.000]
95-900-575-048	-	48.00 [1.219]

TOLERANCE TABLE	
LENGTH IN INCHES/FT [METERS]	TOLERANCE
0" - 23.99" [0 - 0.609]	±0.25" [0.006]
24.00" - 59.99" [0.610 - 1.523]	±0.50" [0.013]
5.0' - 24.99' [1.524 - 7.617]	±2.5%
25.0' & UP [7.620 & UP]	±5.0%

<input checked="" type="checkbox"/> FREQUENCY: DC - 3 GHz	<input checked="" type="checkbox"/> CONTINUITY
<input type="checkbox"/> VSWR: ____ 1 MAX.	<input checked="" type="checkbox"/> HI-POT: 700 VRMS
<input type="checkbox"/> INS. LOSS: ____ dB MAX.	<input type="checkbox"/> OTHER

NOTICE: These drawings, specifications, or other data (1) are, and remain the property of Amphenol Corp. (2) must be returned upon request; and (3) are confidential and not to be disclosed to any person other than those to whom they are given by Amphenol Corp. The furnishing of these drawings, specifications, or other data by Amphenol Corp., or to any other person to anyone for any purpose is not to be regarded by implication or otherwise in any manner licensing, granting rights to permitting such holder or any other person to manufacture, use or sell any product, process or design, patented or otherwise, that may in any way be related to or disclosed by said drawings, specifications, or other data.

UNLESS OTHERWISE SPECIFIED  
DIMENSIONS ARE METRIC (INCHES) AND TOLERANCES ARE:

<0.5mm = $\pm 0.05$ mm	[<0.020 = $\pm 0.002$ ]
0.5 - 6mm = $\pm 0.1$ mm	[0.020 - 0.236 = $\pm 0.004$ ]
>6.00 - 30mm = $\pm 0.2$ mm	[0.236 - 1.181 = $\pm 0.008$ ]
>30.00 - 120mm = $\pm 0.3$ mm	[1.181 - 4.725 = $\pm 0.012$ ]

SEE NOTES

MCX STR PLUG TO  
N STR BHD JACK IP 67  
USING RG 174 CABLE

B

DRAWING NO.	95-900-575-XXX
ITEM NO.	95-900-575-XXX
PART NO.	95-900-575-XXX

EV

A

THIRD ANGLE PROJ.



## REFERENCE

EAR#
13263