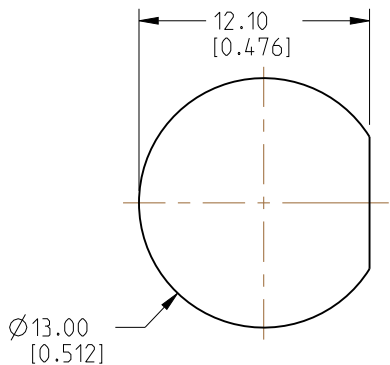
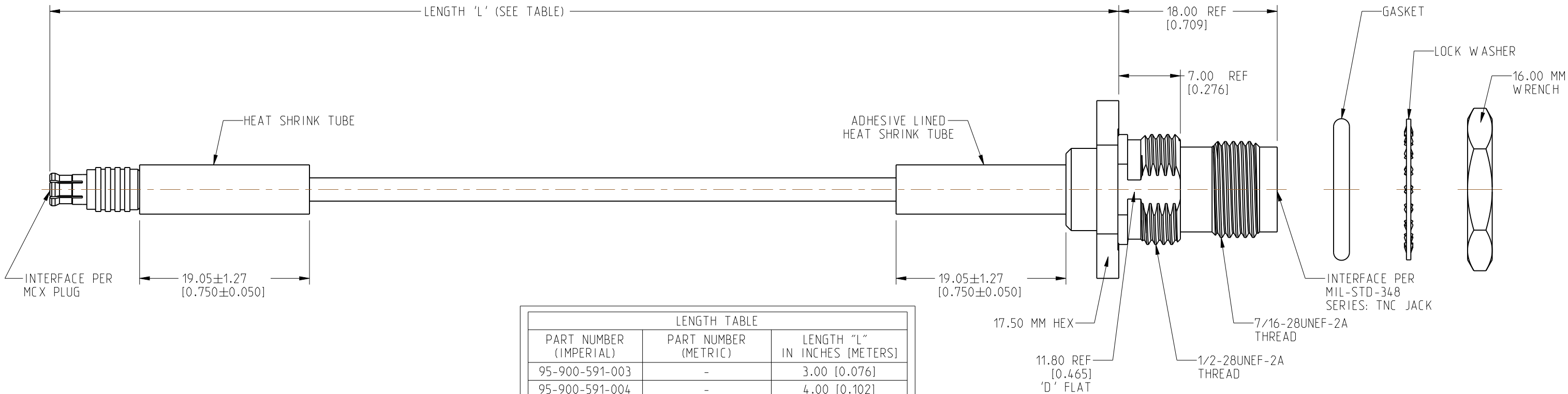
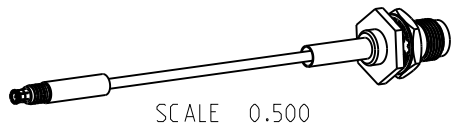


1. MATERIALS AND FINISHES:
MCX STR PLUG - BeCu, GOLD PLATING
TNC STR BHD JACK IP 67 - BRASS, NICKEL PLATING
CABLE - RG 316
2. ELECTRICAL:
A. IMPEDANCE: 50 OHM
3. PACKAGING:
A. QUANTITY: SINGLE PACK
B. MARKING: BAG TO BE MARKED
"AMPHENOL RF, 95-900-591-XXX AND DATE CODE"



RECOMMENDED MOUNTING HOLE DIMENSIONS

REVISIONS				
REV	DESCRIPTION	DATE	ECN	BY
A	RELEASE TO MFG.	12-DEC-25	17683	AMP



LENGTH TABLE		
PART NUMBER (IMPERIAL)	PART NUMBER (METRIC)	LENGTH "L" IN INCHES [METERS]
95-900-591-003	-	3.00 [0.076]
95-900-591-004	-	4.00 [0.102]
95-900-591-005	-	5.00 [0.127]
95-900-591-006	-	6.00 [0.152]
95-900-591-007	-	7.00 [0.178]
95-900-591-008	-	8.00 [0.203]
95-900-591-009	-	9.00 [0.229]
95-900-591-010	-	10.00 [0.254]
95-900-591-011	-	11.00 [0.279]
95-900-591-012	-	12.00 [0.305]
95-900-591-018	-	18.00 [0.457]
95-900-591-024	-	24.00 [0.610]
95-900-591-036	-	36.00 [0.914]
-	95-900-591M100	39.37 [1.000]
95-900-591-048	-	48.00 [1.219]

TOLERANCE TABLE	
LENGTH IN INCHES/FT [METERS]	TOLERANCE
0" - 23.99" [0 - 0.609]	±0.25" [0.006]
24.00" - 59.99" [0.610 - 1.523]	±0.50" [0.013]
5.0' - 24.99' [1.524 - 7.617]	±2.5%
25.0' & UP [7.620 & UP]	±5.0%

CUSTOMER OUTLINE DRAWING

DESIGN REQUIREMENTS:

<input checked="" type="checkbox"/> FREQUENCY: DC - 6 GHz	<input checked="" type="checkbox"/> CONTINUITY
<input type="checkbox"/> VSWR: ____ 1 MAX.	<input checked="" type="checkbox"/> HI-POT: 700 VRMS
<input type="checkbox"/> INS. LOSS: ____ dB MAX.	<input type="checkbox"/> OTHER

NOTICE: These drawings, specifications, or other data (1) are, and remain the property of Amphenol Corp. (2) must be returned upon request; and (3) are confidential and not to be disclosed to any person other than those to whom they are given by Amphenol Corp. The furnishing of these drawings, specifications, or other data by Amphenol Corp., or to any other person to anyone for any purpose is not to be regarded by implication or otherwise in any manner licensing, granting rights to permitting such holder or any other person to manufacture, use or sell any product, process or design, patented or otherwise, that may in any way be related to or disclosed by said drawings, specifications, or other data.

UNLESS OTHERWISE SPECIFIED
DIMENSIONS ARE METRIC (INCHES) AND TOLERANCES ARE:

<0.5mm = ± 0.05 mm	[<0.020 = ± 0.002]
0.5 - 6mm = ± 0.1 mm	[0.020 - 0.236 = ± 0.004]
>6.00 - 30mm = ± 0.2 mm	[>0.236 - 1.181 = ± 0.008]
>30.00 - 120mm = ± 0.3 mm	[>1.181 - 4.725 = ± 0.012]

MATERIAL

SEE NOTES

TITLE
MCX STR PLUG TO
TNC STR BHD JACK IP 67
USING RG 316 CABLE

Amphenol RF

SIZE B	DRAWING NO.	95-900-591-XXX
	ITEM NO.	95-900-591-XXX
	PART NO.	95-900-591-XXX

REV
A

THIRD ANGLE PROJ.

REFERENCE

EAR#
13262

ANGLES = $\pm 1^\circ$

ENGR.1
PONNARASAN

ENGR.2

DATE
09-OCT-25

SHEET NO. 2 OF 2

SCALE: 2.3:1.0

SIZE

B