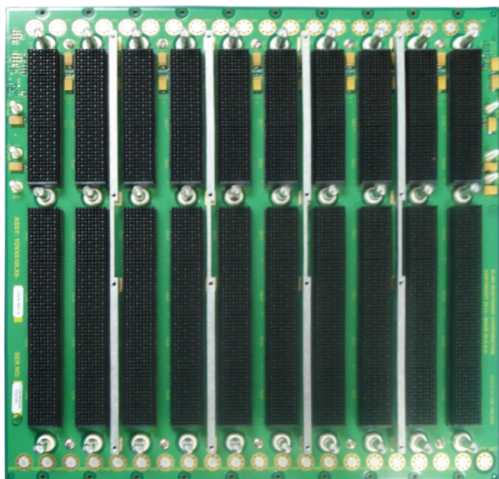


6U 10-Slot OpenVPX Backplane

BKP6-CEN10-11.2.4-n



Description

This 6U OpenVPX backplane features 10 slots, a centralized data plane topology with a data rate of up to 6.25 Gbaud per channel and a switched control plane topology. Optional RTM connectors (rear transition modules) for rear I/O support.

Our VPX backplanes are designed in accordance with the relevant Backplane Profile Descriptions provided within the current ANSI-VITA 46.0 and ANSI-VITA 65 standards.

Features

- Compliant to ANSI/VITA 65-2012 and ANSI/VITA 46.0-2013
- 1.0" slot pitch
- Single Star routing topology
- High-speed Velox connectors
- Rugged Eurocard form factor in 6U height
- Provides built in ESD ground protection in every slot

Board Specifications

- 26 layer stripline design
- 1 oz. power and ground
- PCB Nelco 4000-13EPI or equivalent
- PCB 0.212" thick

Mechanical Specifications

- 6U height
- 10 slots

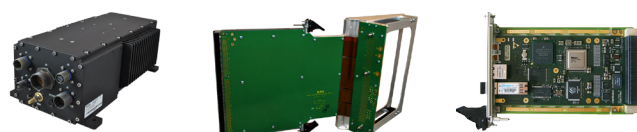
Slot Profiles

- Slot 1 - 5, 7 - 10 SLT6-PAY-4F1Q2U2T-10.2.1
- Slot 6 SLT6-SWH-20U19F-10.4.1

Related Products and Applications

Highly integrated applications such as:

- Integrated display processing, mission management and navigational control for avionics systems
- Industrial monitoring, medical equipment, and night-vision systems requiring enhanced graphics capabilities
- Shipboard systems for target tracking and high definition displays
- Applications requiring a mix of I/O options, high compute density and enhanced graphics



- Load boards convection or conduction cooled
- Rear Transition Modules for I/O
- Intel & Freescale Single Board Computers
- Blade level networking boards (Ethernet, PCI Express)
- Rackmount, desktop, and ATR chassis platforms
- Ruggedization programs

VPX

6U 10-Slot OpenVPX Backplane

BKP6-CEN10-11.2.4-n

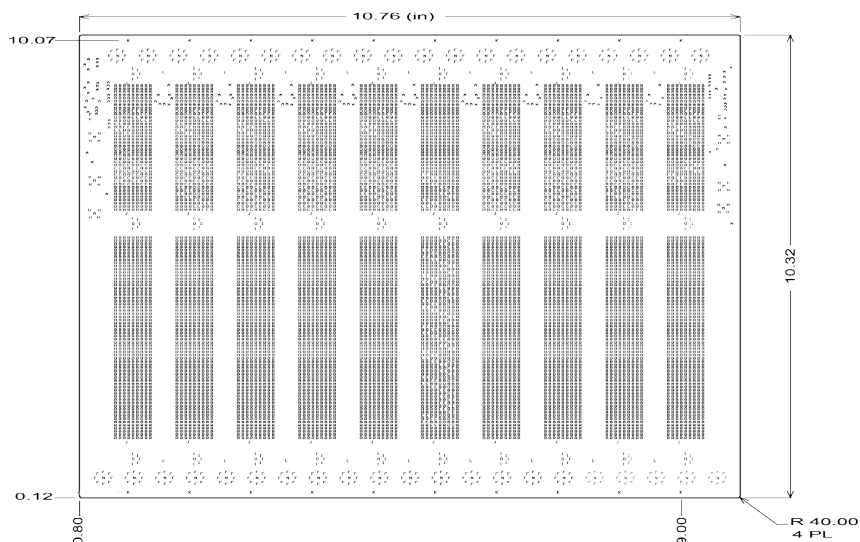


VPX

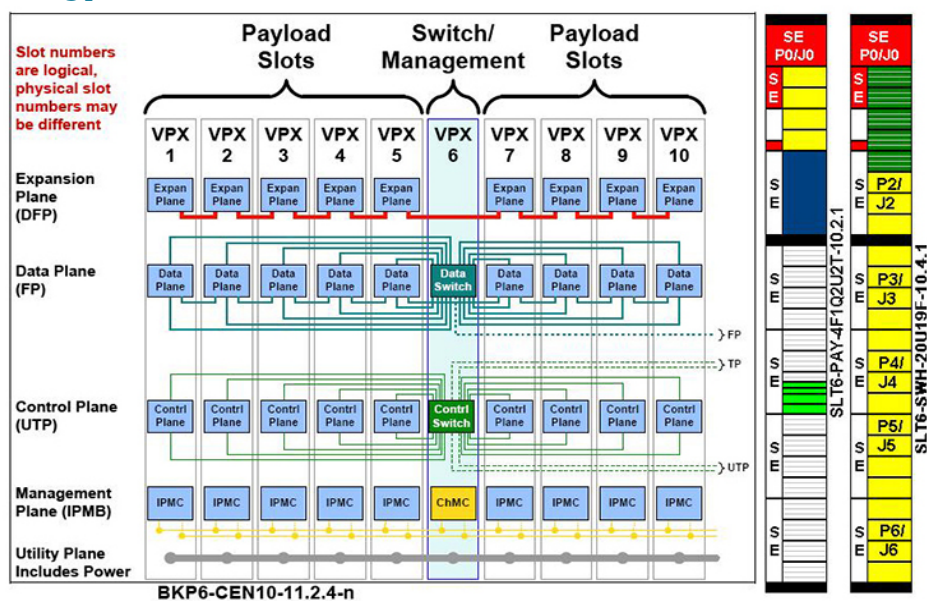


Backplanes

Line Drawing



Backplane Topology



Order Information

Height	Total Slots	Description	Profile Number	Part Number
6U	10	VPX Dual Star with central switches with expansion and control planes, channel Gbaud rate up to 6.25	BKP6-CEN10-11.2.4-3	1OVX610LX6-1X01R

Please contact our sales for more details.

China: +86 21 5866 5908
France: +33 437 06 21 10

Germany: +49 7231 97 34 0
Israel: +972 3 930 50 25

Singapore: +65 6479 8552
Switzerland: +41 44 933 41 11

United Kingdom: +44 1234 838 822
United States: +1 510 656 3400

For other countries, please visit our website.

Elma Electronic • www.elma.com

BKP6-CEN10-11.2.4-n- Rev2 -011717