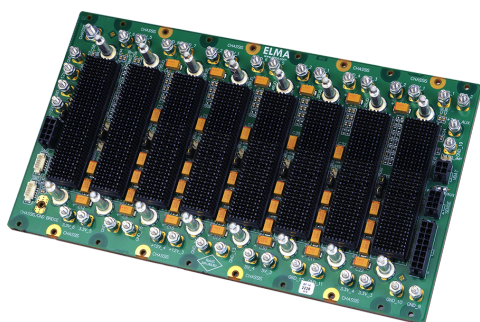
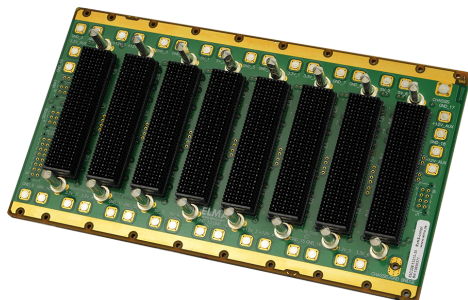


3U 8-Slot OpenVPX Backplane

BKP3-CEN08-15.2.16-n



Description

This 3U OpenVPX backplane features 8 slots, a centralized data plane topology with a data rate of up to 8 Gbps. The control plane also has a centralized topology with a data rate of up to 10.3125 Gbps. Optional RTM connectors (rear transition modules) for rear I/O support.

Our OpenVPX backplanes are designed in accordance with the relevant backplane profile descriptions provided within the current ANSI/VITA and ANSI/VITA 65 standards.

Features

- Compliant to ANSI/VITA 65-2012 and ANSI/VITA 46.0-2013
- Slot pitch 1.0"
- Single star routing topology
- High speed MULTIGIG connectors
- Rugged Eurocard form factor in 3U height
- Provides built in ESD ground protection in every slot

Board Specifications

- 18 layers
- 1 oz power and ground layers
- PCB Nelco 4000-13 EPSI or equivalent
- PCB 0.212" thick

Mechanical Specifications

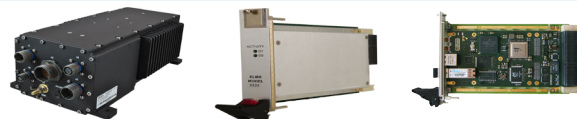
- 3U Height
- 8 Slots
- 5.067" tall X 8.400" wide

Slot Profiles

- Slots 1-6 Payload SLT3-PAY-2F2U-14.2.3
- Slot 7 Data plane switch SLT3-SWH- 6F6U-14.4.1
- Slot 8 Control plane switch SLT3-SWH-2F24U-14.4.3

Applications and Related Products

- High speed image data recording for surveillance applications
- Rugged data acquisition and storage for mission management or navigational control
- Target tracking and high definition data capture in ground, air and shipboard systems
- Any application requiring high speed, high capacity data record, capture and secure storage



- Load boards convection or conduction cooled
- Storage carrier and controller cards
- Rear Transition Modules for I/O
- Intel & Freescale Single Board Computers
- Blade level networking boards (Ethernet, PCI Express)
- Rackmount, desktop, and ATR chassis platforms
- Ruggedization programs

3U 8-Slot OpenVPX Backplane

BKP3-CEN08-15.2.16-n

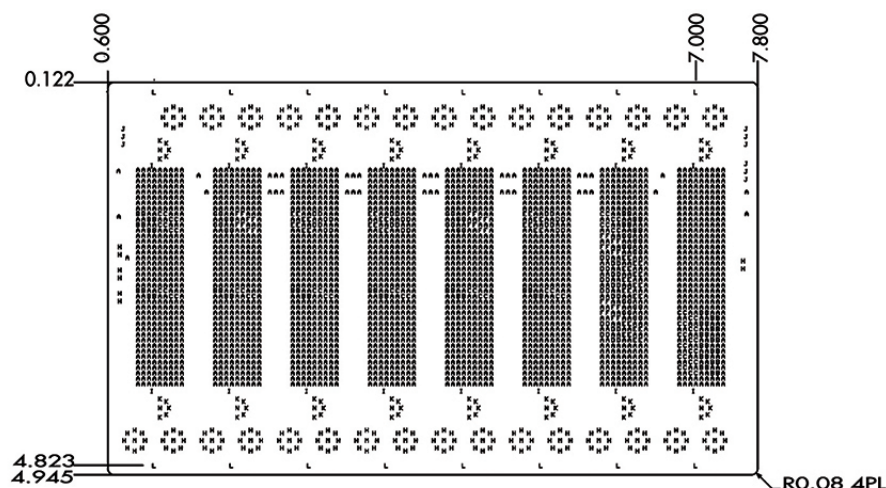


VPX

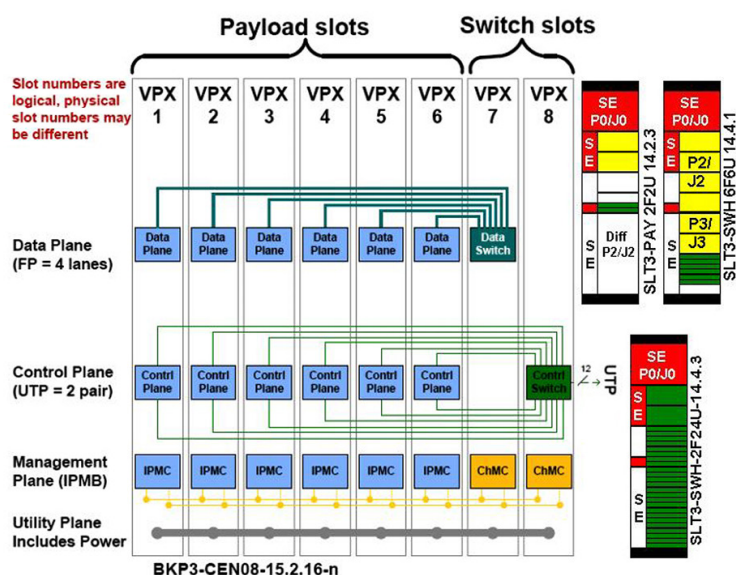


Backplanes

Line Drawing



Backplane Topology



Order Information

Height	Total Slots	Description	Profile Number	Part Number
3U	8	VPX Single star with data plane switch and control plane switch, channel Gbaud rate up to 8 on data plane and 10.3125 on control plane.	BKP3-CEN08-15.2.16-4	65c308-15216-40

Please contact our sales for more details.

China: +86 21 5866 5908
France: +33 437 06 21 10

Germany: +49 7231 97 34 0
Israel: +972 3 930 50 25

Singapore: +65 6479 8552
Switzerland: +41 44 933 41 11

United Kingdom: +44 1234 838 822
United States: +1 510 656 3400