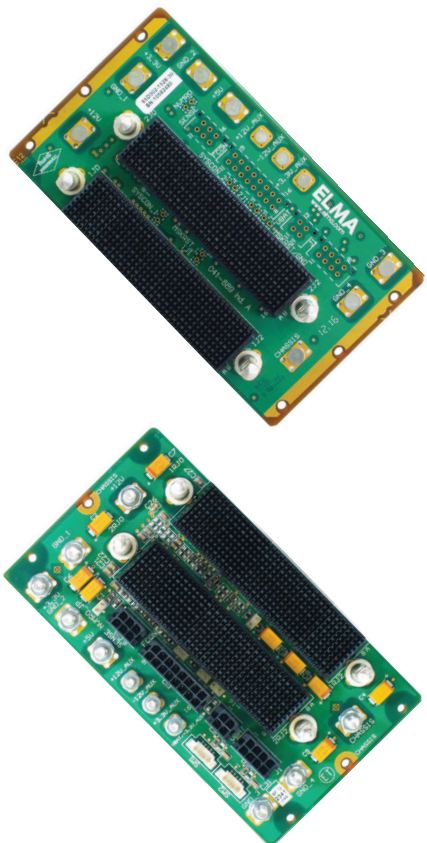


3U OpenVPX 2-Slot Backplane

BKP3-DIS02-15.2.8-n



Description

OpenVPX defines a reliable and transparent way to ensure the interoperability between the VPX Modules from different vendors as well as the compatibility between Backplane and Slot configurations with similar VPX modules. The OpenVPX (VITA 65) specification defines the various potential backplane configurations via profiles topologies. These backplane profiles provide information about the data rate, routing topology and the fabric topology.

Features

- BKP3-DIS02-15.2.8-n Backplane Profile compliant with the VITA 65 specification
- ANSI/VITA 65 (OpenVPX System Specification)
- 1 x Double Fat Pipe Data Plane (Double Fat Pipe = 8 x Lanes)
- No Control Plane
- No Expansion Plane

Board Specifications

- Slot Pitch: 1.0"
- Dimensions: 2.75" wide x 5.07" high x .212" thick (+/- 10%)
- 3U height
- 2 Slots

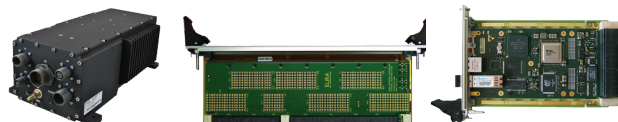
Slot Profiles

- Slot 1 and 2 (2 x VPX Payload Slots): SLT3-PAY-1D-14.2.6

Related Products and Applications

Highly integrated applications such as:

- Integrated display processing, mission management and navigational control for avionics systems
- Industrial monitoring, medical equipment, and night-vision systems requiring enhanced graphics capabilities
- Shipboard systems for target tracking and high definition displays
- Applications requiring a mix of I/O options, high compute density and enhanced graphics



- Load boards convection or conduction cooled
- Rear Transition Modules for I/O
- Intel & Freescale Single Board Computers
- Blade level networking boards (Ethernet, PCI Express)
- Rackmount, desktop, and ATR chassis platforms
- Ruggedization programs

VPX

3U OpenVPX 2-Slot Backplane

BKP3-DIS02-15.2.8-n

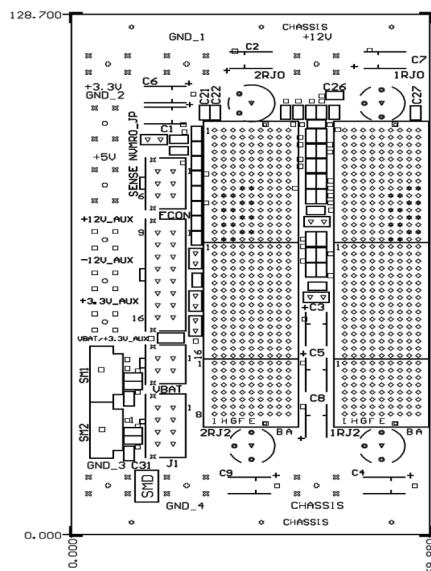


VPX

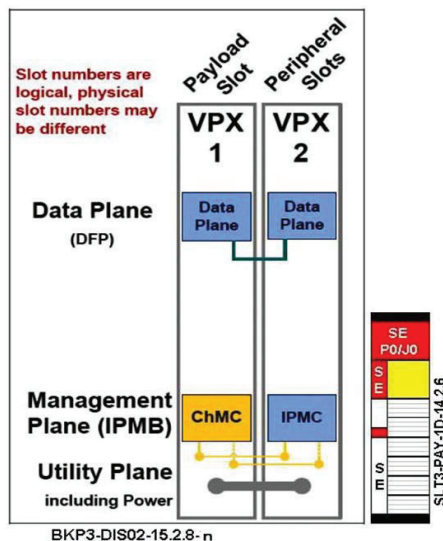


Backplanes

Line Drawing



Backplane Topology



Order Information

Height	Total Slots	Description	Profile Number	Part Number
3U	2	Distributed mesh, no expansion or control planes	BKP3-DIS02-15.2.8-3	1OVX302CZ3-1X11R

Please contact our sales for more details.

China: +86 21 5866 5908
France: +33 437 06 21 10

Germany: +49 7231 97 34 0
Israel: +972 3 930 50 25

Singapore: +65 6479 8552
Switzerland: +41 44 933 41 11

United Kingdom: +44 1234 838 822
United States: +1 510 656 3400

For other countries, please visit our website.

Elma Electronic • www.elma.com

BKP3-DIS02-15.2.8-n - Rev5 - 091516