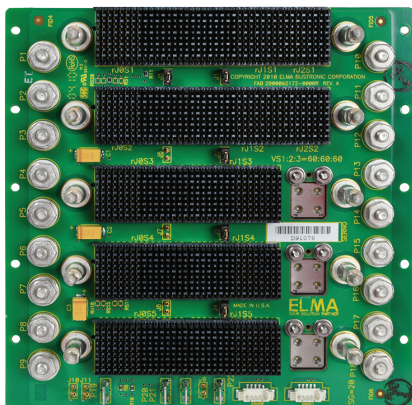


3U 5-Slot OpenVPX Backplane

BKP3-DIS05-15.3.2-n



Description

Designed to meet VITA 65, the 5 slot OpenVPX backplane features a data plane with a mesh using four Fat Pipe's on each slot. Slots 3, 4 and 5 have a 4 position VITA 67.1 connector in the lower half of J2.

Features

- Compliant to the VITA 65 Standard
- Uses the rugged 3U-160 Eurocard form factor
- High-speed EPT Velox connector
- Provides built in ESD ground protection in every slot

Board Specifications

- 14 layers
- 1oz copper all layers
- PCB FR4 or equivalent
- PCB 0.213" thick

Mechanical Specifications

- 5.067" high X 5.232" tall

Slot Profiles

- Slot 1 and 2: SLT3-PAY-4F-14.4.4
- Slots 3-5: SLT3-PAY-4F4R-14.6.2

Applications and Related Products

- High speed image data recording for surveillance applications
- Rugged data acquisition and storage for mission management or navigational control
- Target tracking and high definition data capture in ground, air and shipboard systems
- Any application requiring high speed, high capacity data record, capture and secure storage



- Load boards convection or conduction cooled
- Storage carrier and controller cards
- Rear Transition Modules for I/O
- Intel & Freescale Single Board Computers
- Blade level networking boards (Ethernet, PCI Express)
- Rackmount, desktop, and ATR chassis platforms
- Ruggedization programs

3U 5-Slot OpenVPX Backplane

BKP3-DIS05-15.3.2-n

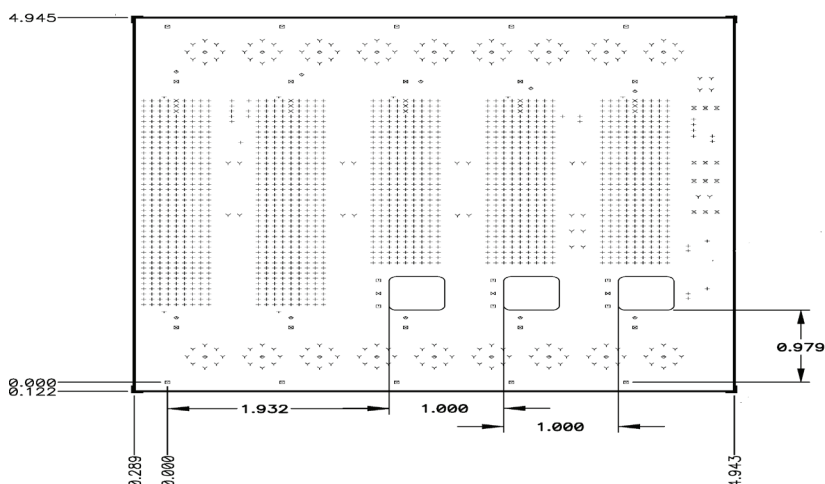


VPX

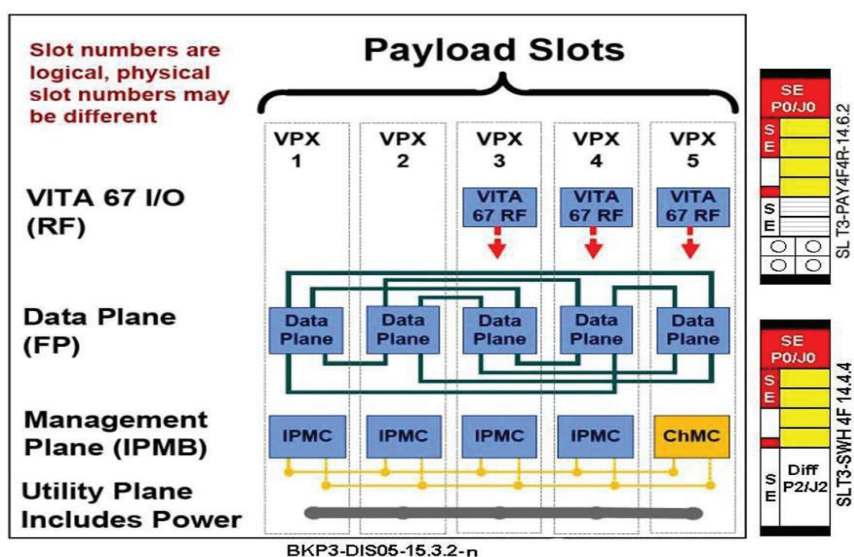


Backplanes

Line Drawing



Backplane Topology



Order Information

Height	Total Slots	Description	Profile Number	Part Number
3U	5	Distributed mesh, 3x optical/RF on expansion plane, no control plane, Gbaud rate to 3.125	BKP3-DIS05-15.3.2-1	1OVX305DX1-1X11R

Please contact our sales for more details.

China: +86 21 5866 5908
France: +33 437 06 21 10

Germany: +49 7231 97 34 0
Israel: +972 3 930 50 25

Singapore: +65 6479 8552
Switzerland: +41 44 933 41 11

United Kingdom: +44 1234 838 822
United States: +1 510 656 3400

For other countries, please visit our website.

Elma Electronic • www.elma.com