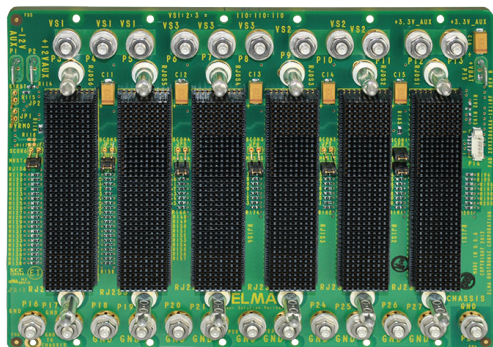
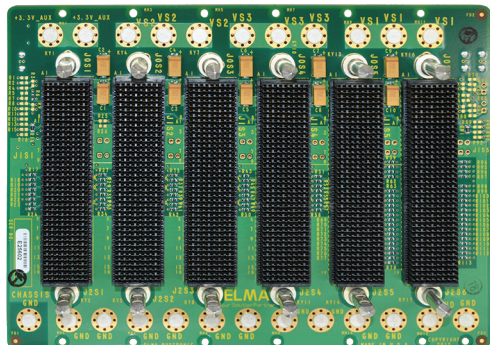


# 3U 6-Slot OpenVPX Backplane

## BKP3-DIS06-15.2.14-n



### Description

Designed to meet VITA 65, the 6 slot OpenVPX backplane features a data plane in a 5 slot ring topology using two Fat Pipes per slot on slots 1-5. The control plane is made up of two thin pipes routed from the switch in slot 6 each payload slot.

### Features

- Compliant to the VITA 65 Standard
- Uses the rugged 3U-160 Eurocard form factor
- High-speed EPT Velox connector
- Provides built in ESD ground protection in every slot

### Board Specifications

- 22 layers
- 1 oz. copper power and ground
- 0.212" thick PCB, FR-4 or equivalent

### Mechanical Specifications

- 5.067" high X 6.715" long

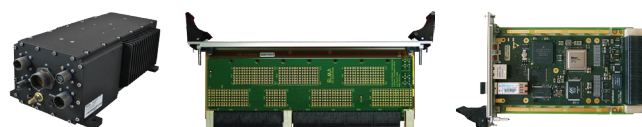
### Slot Profiles

- Slot 1-5: SLT3-PAY-2F2T-14.2.5
- Slot 6: SLT3-SWH-16T-14.4.6

## Related Products and Applications

### Highly integrated applications such as:

- Integrated display processing, mission management and navigational control for avionics systems
- Industrial monitoring, medical equipment, and night-vision systems requiring enhanced graphics capabilities
- Shipboard systems for target tracking and high definition displays
- Applications requiring a mix of I/O options, high compute density and enhanced graphics



- Load boards convection or conduction cooled
- Rear Transition Modules for I/O
- Intel & Freescale Single Board Computers
- Blade level networking boards (Ethernet, PCI Express)
- Rackmount, desktop, and ATR chassis platforms
- Ruggedization programs

**VPX**

# 3U 6-Slot OpenVPX Backplane

## BKP3-DIS06-15.2.14-n

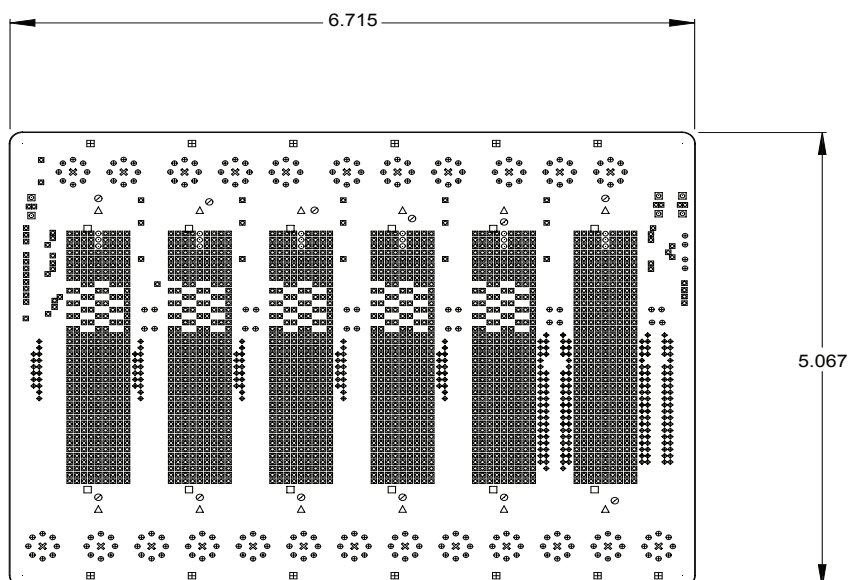


VPX

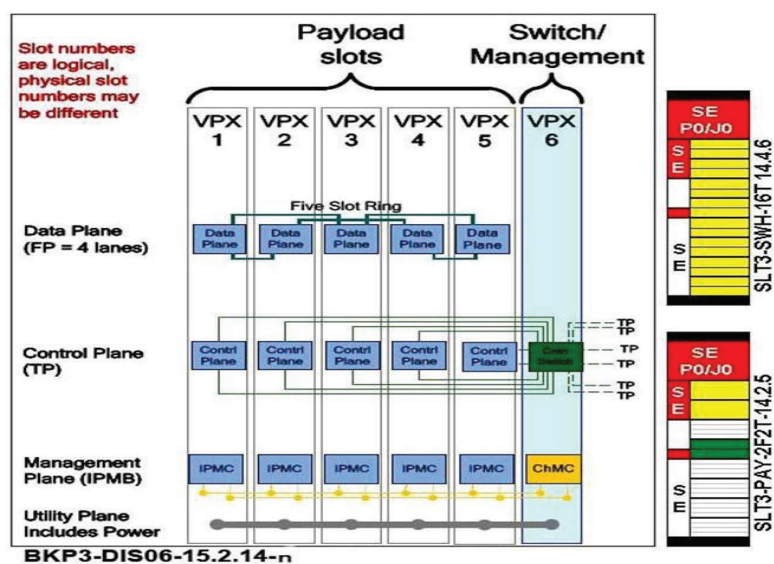


Backplanes

## Line Drawing



## Backplane Topology



## Order Information

Height	Total Slots	Description	Profile Number	Part Number
3U	6	Distributed mesh, no expansion plane, 2x control planes, Gbaud rate to 6.25	BKP3-DIS06-15.2.14-3	1OVX306SX6-1X11R

Please contact our sales for more details.

China: +86 21 5866 5908  
France: +33 437 06 21 10

Germany: +49 7231 97 34 0  
Israel: +972 3 930 50 25

Singapore: +65 6479 8552  
Switzerland: +41 44 933 41 11

United Kingdom: +44 1234 838 822  
United States: +1 510 656 3400

For other countries, please visit our website.

Elma Electronic • [www.elma.com](http://www.elma.com)

BKP3-DIS06-15.2.14-n-3U-6Slot- Rev7 - 091516