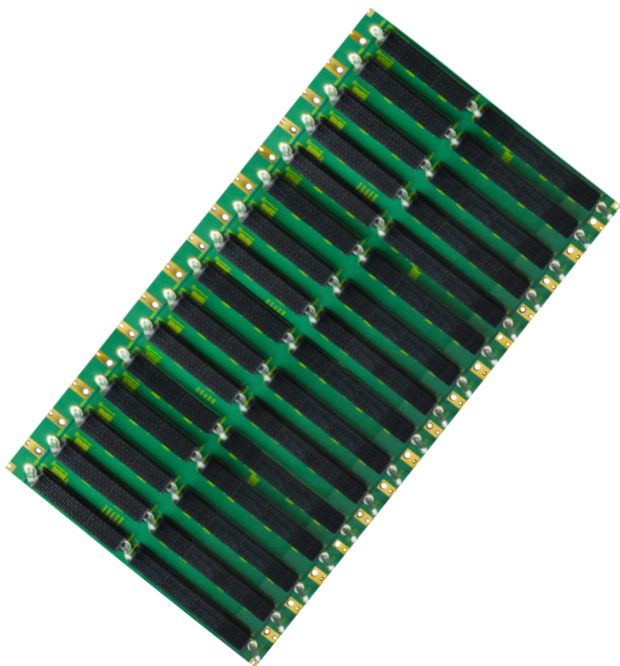


6U 16-Slot OpenVPX Backplane

BKP6-CEN16-11.2.2-n



Description

This 6U OpenVPX backplane features 16 slots in a centralized switch topology with payloads and management slots with up to 6.25 Gbps. Elma offers a variety of backplane topologies to support a wide range of system interconnect requirements. Our VPX backplanes are designed in accordance with the relevant Backplane Profile Descriptions provided within the current ANSI-VITA 46.0 and ANSI-VITA 65 standards.

Features

- Compliant to ANSI/VITA 65-2012 and ANSI/VITA 46.0-2013
- High-speed Velox connector
- Rugged Eurocard form factor in 6U height
- Provides built in ESD ground protection in every slot
- Signal integrity analysis report available upon request

Board Specifications

- 26 layer stripline design
- 1 oz. power and ground
- PCB Nelco 4000-13EPSI or equivalent
- PCB 0.212" thick

Mechanical Specifications

- 6U height
- 16 slots
- Velox connectors

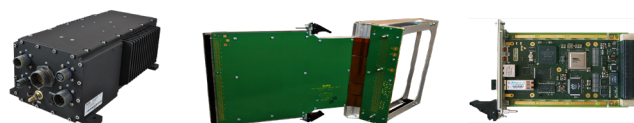
Slot Profiles

- Slot 1 - 7, 10 - 16: SLT6-4F1Q2U2T-10.2.1
- Slot 8 - 9: SLT6-SWH-20U19F-10.4.1

Related Products and Applications

Highly integrated applications such as:

- Integrated display processing, mission management and navigational control for avionics systems
- Industrial monitoring, medical equipment, and night-vision systems requiring enhanced graphics capabilities
- Shipboard systems for target tracking and high definition displays
- Applications requiring a mix of I/O options, high compute density and enhanced graphics



- Load boards convection or conduction cooled
- Rear Transition Modules for I/O
- Intel & Freescale Single Board Computers
- Blade level networking boards (Ethernet, PCI Express)
- Rackmount, desktop, and ATR chassis platforms
- Ruggedization programs

VPX

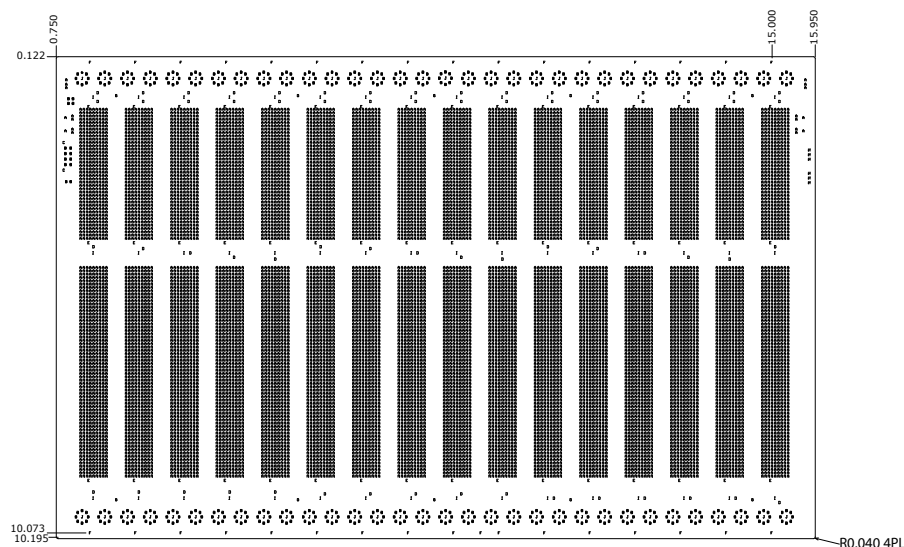


VPX

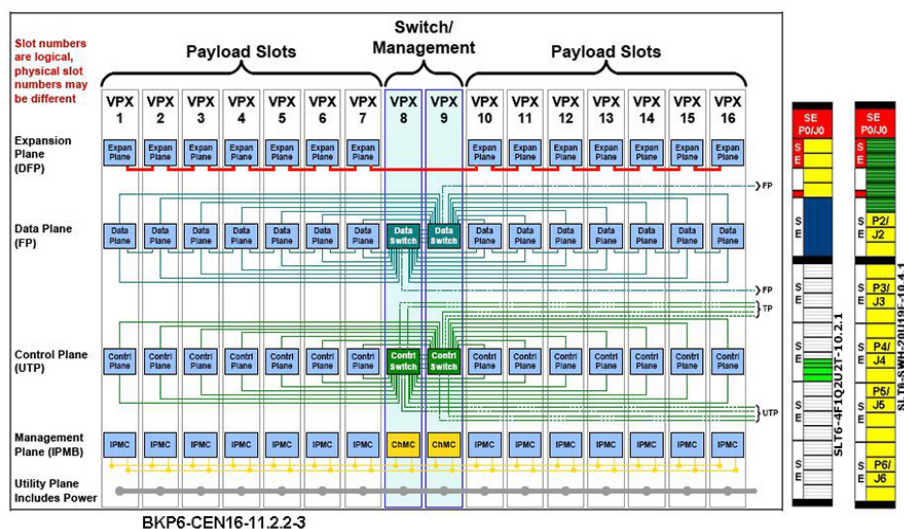


Backplanes

Line Drawing



Backplane Topology



Order Information

Height	Total Slots	Description	Profile Number	Part Number
6U	16	VPX Dual Star central switches with expansion and control planes, channel Gbaud rate up to 6.25	BKP6-CEN16-11.2.2-n	1OVX616GX6-1X01R
6U	16	VPX Dual Star central switches with expansion and control planes, channel Gbaud rate up to 6.25, no RTM connectors	BKP6-CEN16-11.2.2-n	1OVX616GX6-1X00R

Please contact our sales for more details.

China:	+86 21 5866 5908	Germany:	+49 7231 97 34 0	Singapore:	+65 6479 8552	United Kingdom:	+44 1234 838 822
France:	+33 38 85 67 25 0	Israel:	+972 3 930 50 25	Switzerland:	+41 44 933 41 11	United States:	+1 510 656 3400

For other countries, please visit our website.