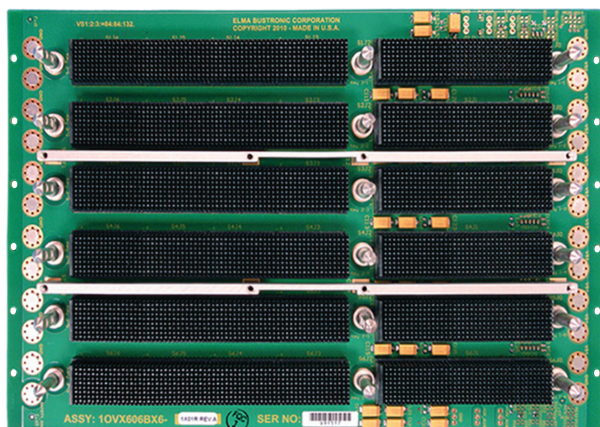


6U 6-Slot OpenVPX Backplane

BKP6-DIS06-11.2.10-n



Description

This 6U OpenVPX backplane features 6 slots, a distributed mesh data plane topology with a data rate of up to 6.25 Gbaud per channel and a switched control plane topology.

Elma offers a variety of backplane topologies to support a wide range of system interconnect requirements. Our VPX backplanes are designed in accordance with the relevant Backplane Profile Descriptions provided within the current ANSI-VITA 46.0 and ANSI-VITA 65 standards.

Features

- Compliant to ANSI/VITA 65-2012
- Compliant to ANSI/VITA 46.0-2013
- High-speed Velox connector
- Rugged Eurocard form factor in 6U height
- Provides built in ESD ground protection in every slot

Board Specifications

- 16 layer stripline design
- 1 oz. power and ground
- PCB FR-4 or equivalent
- PCB 0.212" thick

Mechanical Specifications

- 6U height
- 6 slots
- Velox connectors

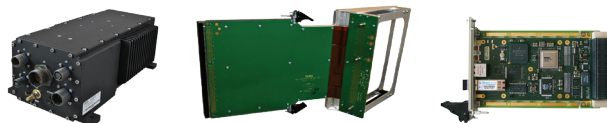
Slot Profiles

- Slots 1 - 5: SLT6-PAY-4F2T-10.2.2
- Slot 6: SLT6-SWH-4F24T-10.4.4

Related Products and Applications

Highly integrated applications such as:

- Integrated display processing, mission management and navigational control for avionics systems
- Industrial monitoring, medical equipment, and night-vision systems requiring enhanced graphics capabilities
- Shipboard systems for target tracking and high definition displays
- Applications requiring a mix of I/O options, high compute density and enhanced graphics



- Load boards convection or conduction cooled
- Rear Transition Modules for I/O
- Intel & Freescale Single Board Computers
- Blade level networking boards (Ethernet, PCI Express)
- Rackmount, desktop, and ATR chassis platforms
- Ruggedization programs

VPX

6U 6-Slot OpenVPX Backplane

BKP6-DIS06-11.2.10-n

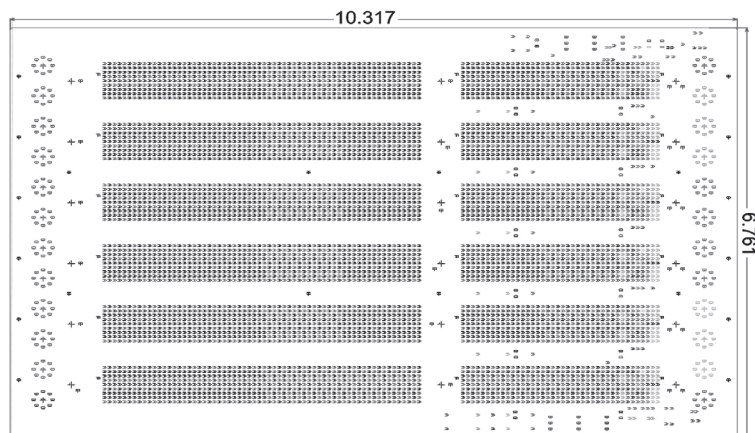


VPX

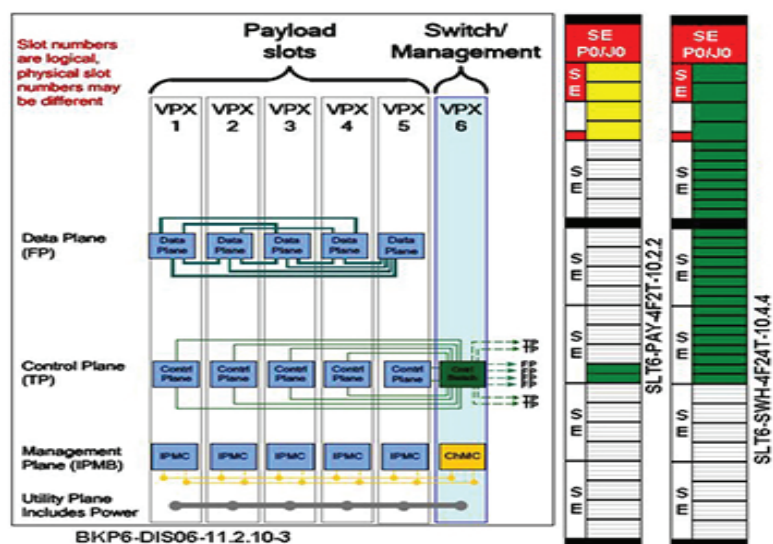


Backplanes

Line Drawing



Backplane Topology



Order Information

Height	Total Slots	Description	Profile Number	Part Number
6U	6	VPX mesh data plane with switched control plane, up to 6.25 Gbaud channel data rate	BKP6-DIS06-11.2.10-3	1OVX606BX6-1X01R
6U	6	VPX mesh data plane with switched control plane, up to 6.25 Gbaud channel data rate, no RTM connectors	BKP6-DIS06-11.2.10-3	1OVX606BX6-1X00R

Please contact our sales for more details.

China: +86 21 5866 5908
France: +33 437 06 21 10

Germany: +49 7231 97 34 0
Israel: +972 3 930 50 25

Singapore: +65 6479 8552
Switzerland: +41 44 933 41 11

United Kingdom: +44 1234 838 822
United States: +1 510 656 3400

For other countries, please visit our website.

Elma Electronic • www.elma.com

BKP6-DIS06-11.2.10-n-6USlot- Rev -6 121616