

3U OPENVPX 2-SLOT BACKPLANE

1 VPX Power and Ground plus 1 VITA 62 power supply slot

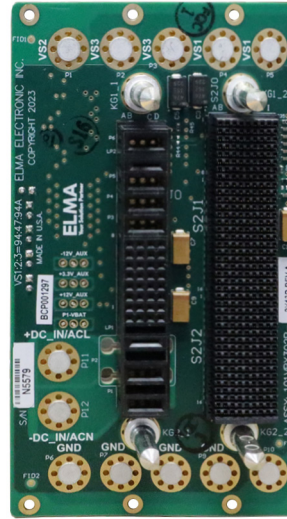
DESCRIPTION

This 3U Open VPX backplane offers one VITA 46 PIC (Plug in Card) Power and Ground slot and one VITA 62 power supply slot to support the development and deployment of systems requiring a VITA 62 power supply.

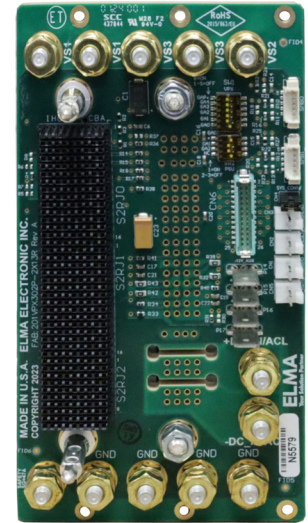
The board has a VITA 62 compliant power supply connector, a header for various IO signals, and power studs. Power studs are used for input and output voltage rails. The power studs and other connectors can be used to feed other backplanes and can be combined with other Elma backplanes in a single chassis.

The VITA 46 compliant Pass Through Power and Ground slot provides a cost-effective way to design and test cards and systems using the VPX architecture, aligned to the SOSA Technical Standard or for custom designs. The only assigned pins on these backplanes are for 3.3V, 5V and 12V power, and both ground and utility planes are defined. The remaining pins are all user-defined. The rear connectors are all fully populated, and can be accessed with Elma's slot-to-slot or slot-to-I/O bulkhead cable assemblies for system development.

Each board includes mounting holes to secure to the chassis.



Front View



Rear View

FEATURES

Power and Ground Slot

- Compliant to the latest VITA 46 / 65 specifications
- Power and ground slot for simple and low-cost development
- 3.3V, 5V, and 12V power
- P0 - P2 pins are user-defined
- Backplanes have the utility plane implemented in P0 and the System Management bus routed to 2 headers
- NVMRO, SYSRESET#, SYSCON# and maskable reset are routed to 3 headers
- Selectable geographical addressing via DIP switch
- Maintenance ports available via RTM
- Unrouted signals pass to the Rear Transition Module connectors and are configured to support RTMs or Meritec cables
- Up to 25GBASE-KR/100GBASE-KR4 data rates are supported on the pass-through links.

Power Interface Slot

- Complies with VITA 62.0 and VITA 62.2 (allowing separators/insulators to be installed on demand)
- PSU slot outputs and VDC inputs via #8-32 power studs
- Header for various control signals like voltage sense, current share, IPMB interface, inhibit, enable and fail, etc
- Selectable geographical addressing via a DIP switch
- 5HP width for a single power supply
- Can support insulators / fins for 270VDC operation in high altitude / harsh environments (custom assembly)

3U OPENVPX 2-SLOT BACKPLANE

1 VPX Power and Ground plus 1 VITA 62 power supply slot

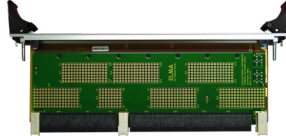
BOARD SPECIFICATIONS

- 12- layers design, IPC Class 3
- 1 oz. copper outer layers, 2 oz. copper inner layers
- 0.212" +/-10% thick PCB, UL 94V-0 recognized FR-4

MECHANICAL SPECIFICATIONS

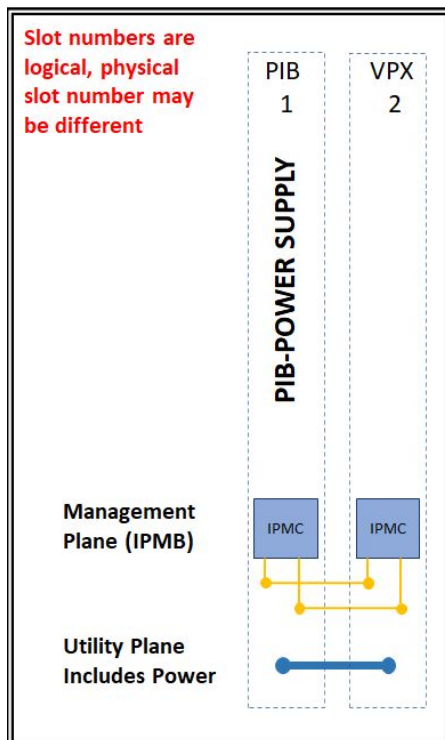
- For use in 3U height OpenVPX system chassis with single power supply connector
- 5.07" Tall X 2.87" Wide

RELATED PRODUCTS



- › Rackmount, desktop, and ATR chassis platforms
- › Rear Transition Modules for I/O
- › Ruggedization programs

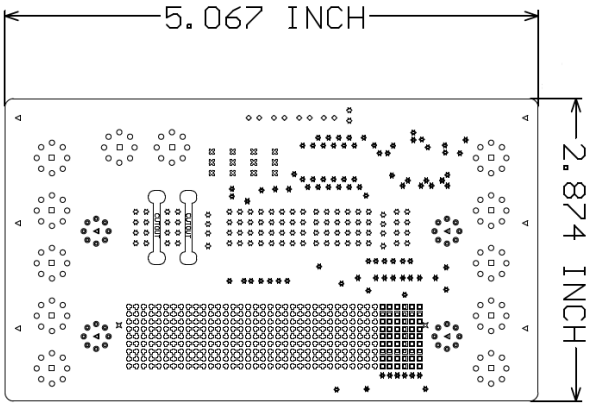
TOPOLOGY



3U OPENVPX 2-SLOT BACKPLANE

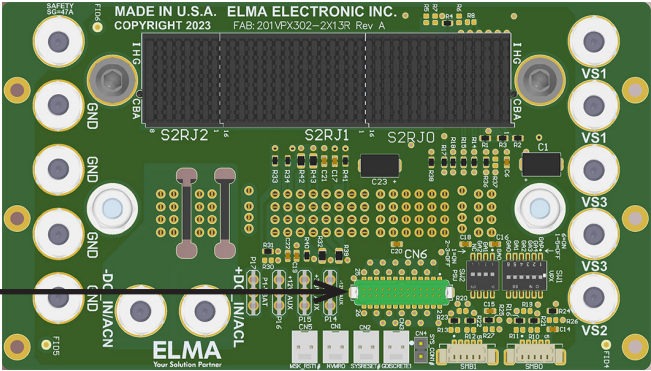
1 VPX Power and Ground plus 1 VITA 62 power supply slot

LINE DRAWING



CN6 Input

GND	1	2	GND
ENABLE	3	4	SM1_SDA
INHIBIT	5	6	NED_RETURN
SENSE_RETURN	7	8	NED
VS3_SENSE	9	10	FAIL
VS3_SHARE	11	12	UD1_SYNC_OUT
VS2_SENSE	13	14	UD4
VS2_SHARE	15	16	UD0_SYNC_IN
VS1_SENSE	17	18	+3.3V_AUX
VS1_SHARE	19	20	P1-VBAT
SM3_SDA	21	22	+12V_AUX
SM2_SCL	23	24	GND
SM0_SCL	25	26	-12V_AUX



ORDERING INFORMATION

Height	Total Slots	Description	Part Number
3U	2-Slot	1 VPX VITA46 Power and Ground Slot plus 1 VITA62 Power Supply slot	101VPX302P-2X13R

© Copyright 2025 by Elma Electronic Inc. Subject to technical modifications, all data supplied without liability.

Please contact our sales team for more details.

United States: +1 510 656 3400
France: +33 388 56 72 50

Germany: +49 7231 97 34 0
Israel: +972 3 930 50 25

Singapore: +65 6479 8552
Switzerland: +41 44 933 41 11

United Kingdom: +44 1234 838 822