

**3U OpenVPX 8-SLOT BACKPLANE**

BKP3-CEN08-15.2.16-N

**DESCRIPTION**

This 3U OpenVPX backplane features 8 slots, a centralized data plane topology with a data rate of up to 8 Gbps. The control plane also has a centralized topology with a data rate of up to 10.3125 Gbps. Optional RTM connectors (rear transition modules) for rear I/O support. Our OpenVPX backplanes are designed in accordance with the relevant backplane profile descriptions provided within the current ANSI/VITA and ANSI/VITA 65 standards.

**Features**

- Compliant to ANSI/VITA 65-2021 and ANSI/VITA 46.0-2019
- Slot pitch 1.0"
- Single star routing topology
- High speed MULTIGIG connectors
- Rugged Eurocard form factor in 3U height
- Provides built in ESD ground protection in every slot

**Board Specifications**

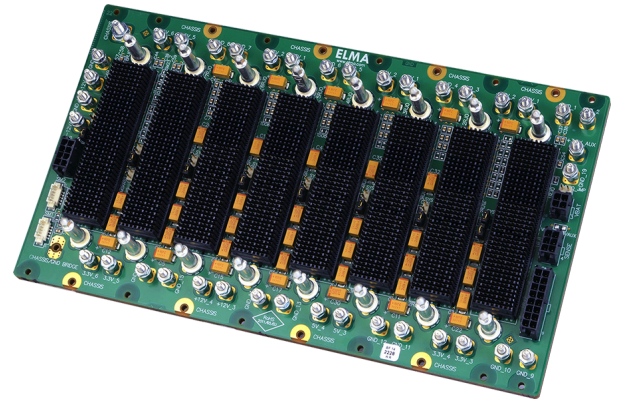
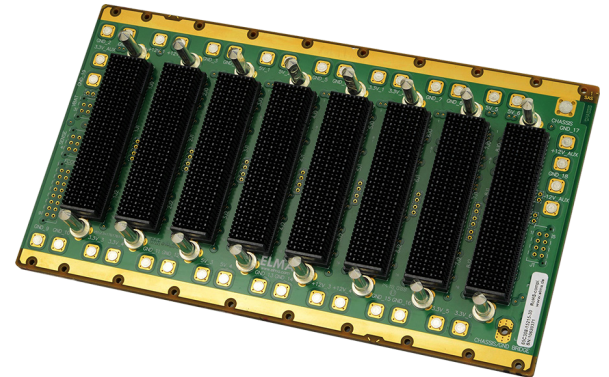
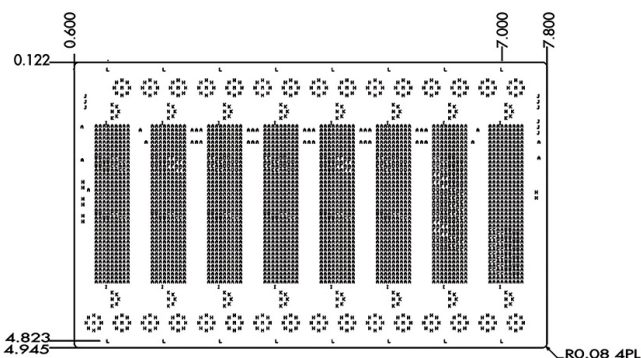
- 18 layers
- 1 oz power and ground layers
- PCB Nelco 4000-13 EPSI or equivalent
- PCB 0.212" thick

**Mechanical Specifications**

- 3U Height
- 8 Slots
- 5.067" tall X 8.400" wide

**DRAWINGS**

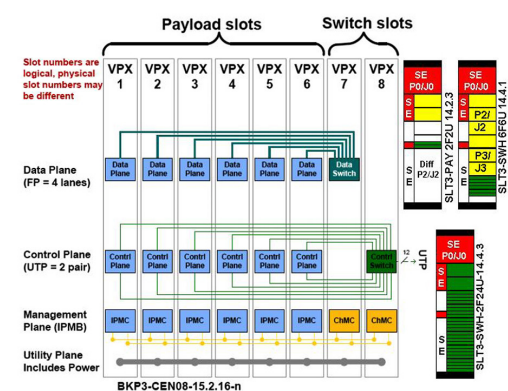
## BACKPLANE DESIGN

**Slot Profiles**

- SSLOTS 1-6 Payload SLT3-PAY-2F2U-14.2.3
- Slot 7 Data plane switch SLT3-SWH- 6F6U-14.4.1
- Slot 8 Control plane switch SLT3-SWH-2F24U-14.4.3

**TOPOLOGY**

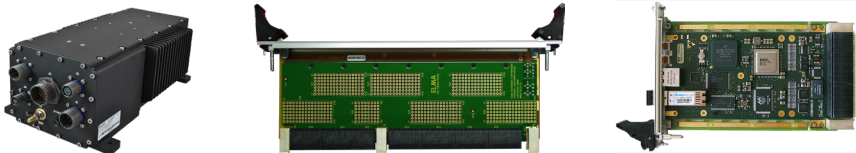
## BACKPLANE DESIGN



APPLICATIONS

- › Integrated display processing, mission management and navigational control for avionics systems
- › Industrial monitoring, medical equipment, and night-vision systems requiring enhanced graphics capabilities
- › Shipboard systems for target tracking and high definition displays
- › Applications requiring a mix of I/O options, high compute density and enhanced graphics

RELATED PRODUCTS



- › Load boards convection or conduction cooled
- › Rear Transition Modules for I/O
- › Intel & Freescale Single Board Computers
- › Blade level networking boards (Ethernet, PCI Express)
- › Rackmount, desktop, and ATR chassis platforms
- › Ruggedization programs

ORDER INFORMATION

Height	Total Slots	Description	Profile Number	Part Number
3U	8	VPX Single star with data plane switch and control plane switch, channel Gbaud rate up to 8 on data plane and 10.3125 on control plane.	BKP3-CEN08-15.2.16-4	1OVX308TZL-1X11

© Copyright 2024 by Elma Electronic, Inc. Subject to technical modifications, all data supplied without liability.

Please contact our sales team for more details.

China: +86 21 5866 5908  
France: +33 388 56 72 50

Germany: +49 7231 97 34 0  
Israel: +972 3 930 50 25

Singapore: +65 6479 8552  
Switzerland: +41 44 933 41 11

United Kingdom: +44 1234 838 822  
United States: +1 510 656 3400