

PRODUCT DESCRIPTION

MAIN FEATURES

Stylebox 15 e-motion is a portable desktop case according to 19" standards. It is a platform that was built according to the IEC60297 standard. The EMC protection, color and design variants make it the first choice for high-end electronics. The top design, the variety of sizes and variants as well as the wide range of accessories create ideal conditions for a variety of applications such as controls, measuring devices or computer systems.

- › Case system: 4 longitudinal aluminum profiles and 2 side walls as a supporting frame | sheet steel cladding
- › The front of the case can be fitted as required with cover brackets, front handles or 19" fixing brackets - this permits subsequent conversion from a desktop case to a 19" module unit and vice-versa
- › Mounting dimensions according to IEC60297
- › Numerous accessories
- › Internal mounting chassis
- › Horizontal and vertical insertion of Eurocard PCBs
- › Elegant design
- › EMC basic

PRODUCT VARIETY

- Cover plates bolted to the side
- Front of the enclosure can be equipped with cover brackets, front handles or 19" fixing brackets
- Colorless passivated inner wall
- Longitudinal profiles colorless passivated (enables a large contact area for optimum EMC protection)
- Top and bottom plates on the contact surfaces color-free

TYPICAL APPLICATIONS

- 19" subrack systems (e.g. for IEC or IEEE controller cards)
- Measurement and test instruments
- Laboratory or field instruments
- Medical equipment



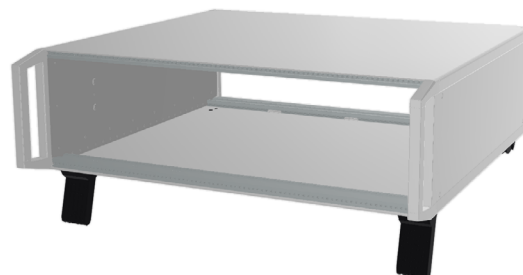
For full portfolio please consult our online configurator.
<https://elma.3d-configure.com/stylebox-15-e-motion/>

TYPES

DESKTOP VERSION

SPECIFICATIONS

- Height: 2 U, 3 U, 4 U
- Width: 42 HP, 63 HP, 84 HP
- Depth: 305 mm, 395 mm
- Colors: Silver Argento 4601
- EMC basic
- Front- and rear extrusions
- 4 tapped strips M 2.5
- 2 handles



Scope of delivery:

Delivered as set

- Cover and bottom panel solid, Silver Argento
- Internal side panel left and right, passivated
- Side panel left and right, Silver Argento
- Front- / rear side open
- Front handles left / right, Silver Argento
- Feet and tilt feet, black

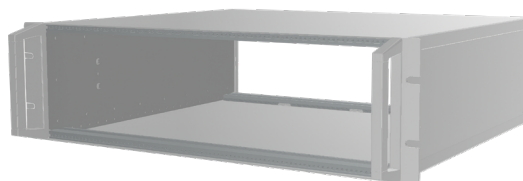
U	HP	Depth	Part No.
2	42	305 mm	NX15-188-0242305-02
2	63	305 mm	NX15-188-0263305-02
2	84	395 mm	NX15-188-0284395-02
3	42	305 mm	NX15-188-0342305-02
3	63	305 mm	NX15-188-0363305-02
3	84	395 mm	NX15-188-0384395-02
4	42	305 mm	NX15-188-0442305-02
4	63	305 mm	NX15-188-0463305-02
4	84	395 mm	NX15-188-0484395-02

 Available from stock

19" MOUNTABLE VERSION

SPECIFICATIONS

- Height: 2 U, 3 U, 4 U
- Width: 84 HP
- Depth: 395 mm
- Colors: Silver Argento 4601
- EMC basic
- Front- and rear extrusions
- 4 tapped strips M 2.5
- 2 handles



Scope of delivery:

Delivered as set

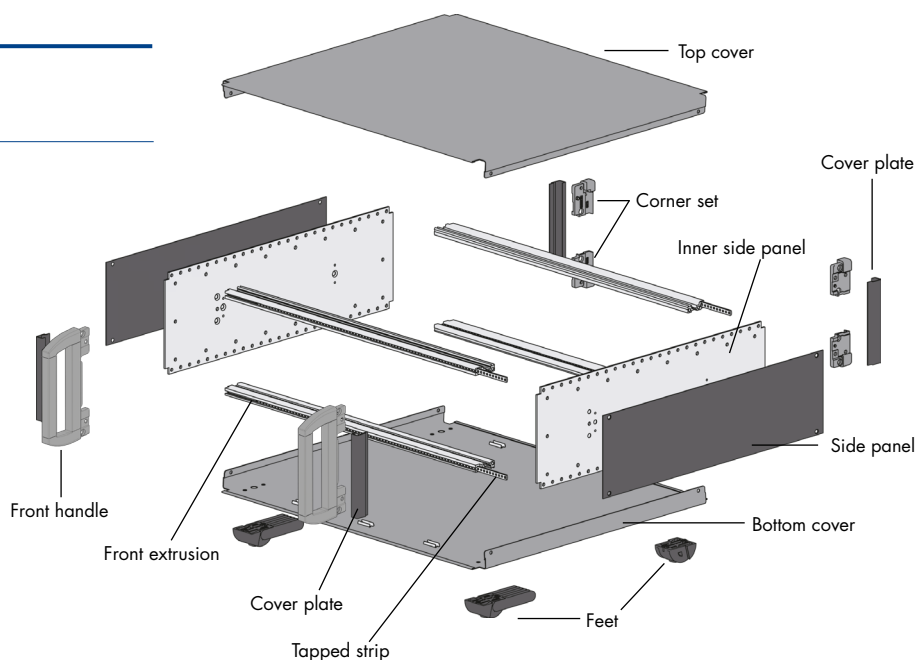
- Cover and bottom panel solid, Silver Argento
- Internal side panel left and right, passivated
- Side panel left and right, Silver Argento
- Front- / rear side open
- Front handles left / right, Silver Argento
- 19" brackets left / right, Silver Argento

U	HP	Depth	Part No.
2	84	395 mm	NX15-189-0284395-01
3	84	395 mm	NX15-189-0384395-01
4	84	395 mm	NX15-189-0484395-01

 Available from stock

PRODUCT STRUCTURE

CONFIGURATION



STRUCTURE

- Aluminum profile, electrically conductive

Scope of delivery:

Delivered as set

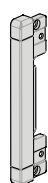
- 4 front / rear extrusions
- 4 tapped strips M 2.5
- 1 set of 16 screws torx T20 (M4 x 10)



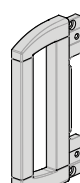
BEZELS

- 19" versions do not allow additional cover brackets
- Profiles and die-cast parts: Aluminum, Silver Argento, contact area conductive

Desktop Version

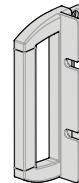


Bracket



Front handle

19" mountable Version



19" bracket
with front handle



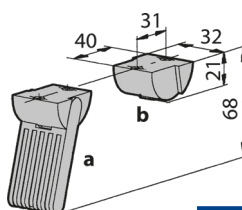
19" bracket

FEET

- With and without tilt feet
- Glass-fiber reinforced plastic, UL94 V-0
- Including screws 3.5 x 8 size T10
- Up to 30 kg carrying capacity per set

Scope of delivery:

- 2 + 2 case feet, incl. rubber inserts NBR
- 8 countersunk PT-screws torx T10 (3.5 x 8)



Description	Color
Case feet 2 x a + 2 x b	Black (RAL 9005)

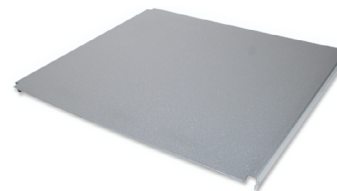
PRODUCT STRUCTURE

TOP COVER

- Symmetrical construction: Perforation can be used at front or rear
- 0.75 mm sheet steel powder coated Silver Argento, contact area conductive

Scope of delivery:

- 1 top cover

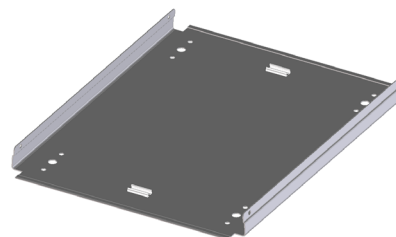


BOTTOM COVER

- Symmetrical construction: Perforation at front or rear
- 0.75 mm sheet steel powder coated Silver Argento, contact area conductive

Scope of delivery:

- 1 bottom cover with mounted feet

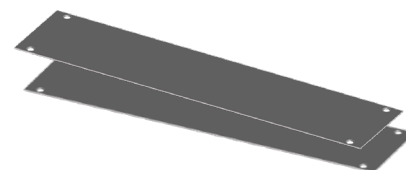


SIDE PANELS

- Inner side panel 2 mm aluminum, clear passivated
- Side panel, Silver Argento

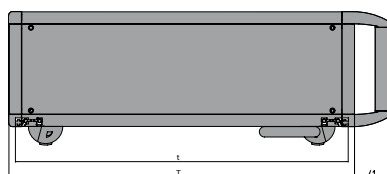
Scope of delivery:

- 2 inner side panels (for left and right side)
- 2 side panels (for left and right side)

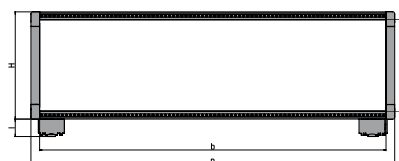


DIMENSION DRAWINGS

SIDE VIEW



FRONT VIEW



U	Height H		Height Hs	
	mm	inch	mm	inch
2	88.05	3.46	68.05	2.67
3	132.50	5.21	112.50	4.42
4	176.95	6.96	156.95	6.17

Depth T		Depth t	
mm	inch	mm	inch
305	12.00	292.6	11.51
395	15.55	382.6	15.06

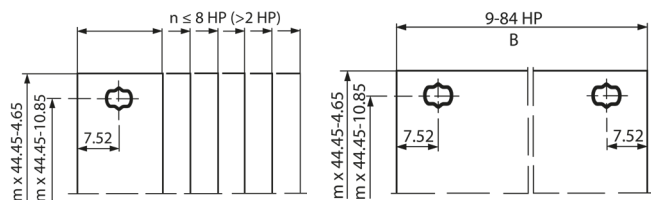
HP	Width B		Width b	
	mm	inch	mm	inch
42	235.2	9.25	213.4	8.4
63	341.9	13.46	320.1	12.6
84	448.6	17.66	426.8	16.8

ACCESSORIES

FRONT PANELS

FLAT FRONT PANELS

- For subracks and enclosures, solid
- Aluminum 2.5 mm, clear anodised (non-conductive)
- 1 HP and 2 HP are divider extrusions (not flat panels)



Scope of delivery:

- 1 flat front panel

Flat front panels for subracks and enclosures, solid:

Width HP	B		Height			Part No.	
	mm	inch	1 U 39.8 mm	ca. 1 U* 42.15 mm	2 U 84.2 mm	3 U 128.7 mm	4 U 173.1 mm
2	10.0	0.39	—	—	—	21N302	—
3	15.2	0.59	—	—	—	21N303 🔥	21N403
4	20.1	0.79	—	—	—	21N304 🔥	21N404 🔥
5	25.2	0.99	—	—	—	21N305	21N405
6	30.3	1.19	—	—	—	21N306 🔥	21N406
7	35.3	1.38	—	—	—	21N307 🔥	21N407 🔥
8	40.4	1.59	—	—	—	21N308	21N408
10	50.6	1.99	—	—	—	21N310	21N410
11	55.7	2.19	—	—	—	21N311	—
12	60.7	2.38	—	—	—	21N312	21N412
14	70.9	2.79	—	—	—	21N314	21N414
16	81.1	3.19	—	—	—	21N316	21N416
20	101.4	3.59	—	—	—	21N320	21N420
21	106.5	4.19	—	—	—	21N321	21N421
28	142.0	5.59	—	—	—	21N328	—
32	162.3	6.38	—	—	—	21N332	21N432
42	213.1	8.38	—	—	21N242 🔥	21N342 🔥	21N442
52	263.9	10.38	—	—	—	21N352	21N452
63	319.8	12.59	—	—	21N263 🔥	21N363 🔥	21N463
81	411.3	16.19	—	—	21N281	21N381	21N481
84	426.5	16.79	21N184	21N084*	21N284 🔥	21N384 🔥	21N484 🔥

* Coverplates for 1 U fan opening

Front panel screws:

- Set of 10 screws

Description	Part No.
Screws torx M2.5 x 11.3, with plastic screw retainer	63K159 🔥

🔥 **Available from stock**