

**3U 12-SLOT OpenVPX BACKPLANE**

BKP3-CEN12-15.2.6-N

**DESCRIPTION**

Elma's OpenVPX backplanes are designed to meet the VITA 65 and VITA 46 standards. The 12-slot backplane features dual cascading switch slots each with data plane Fat Pipe connections to five payload slots. Each switch slot also supports cascading control plane Ultra Thin Pipe connections to the five payload slots.

**FEATURES**

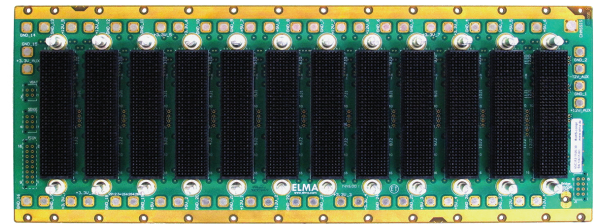
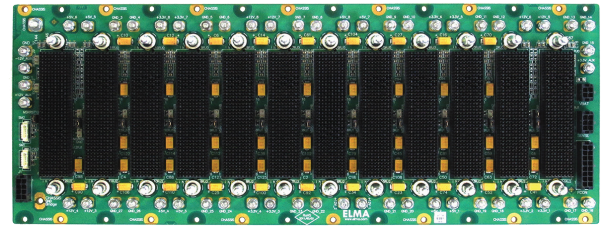
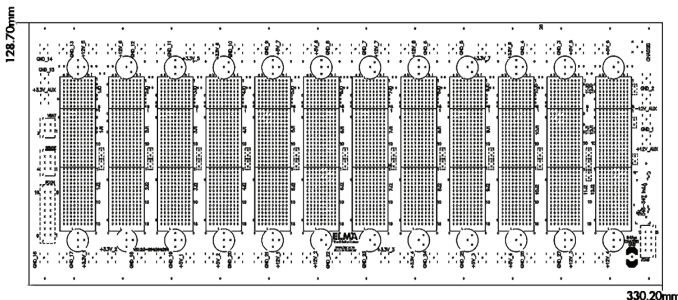
- Backplane is supporting subsidiary standards for protocols as: Serial Rapid IO (VITA 46.3), PCI Express (VITA 46.4)
- High flexibility allowing applications to dictate the necessary fabric mapping
- High-speed Multi-gig connector in centralised topology
- Rugged Eurocard form factor in 3U height
- Designed to support Rear Transition Modules according to the VITA 46.10 standard
- Universal Ground Pattern according to the VITA 65 (OpenVPX)
- System Management interface on the backplane

**BOARD SPECIFICATIONS**

- 18 layers stripline design
- Slot Pitch: 1,0" (25.4mm)
- PCB size: 330.20mm x 128,70mm
- PCB thickness: 5.4mm (+/- 10%)

**DRAWINGS**

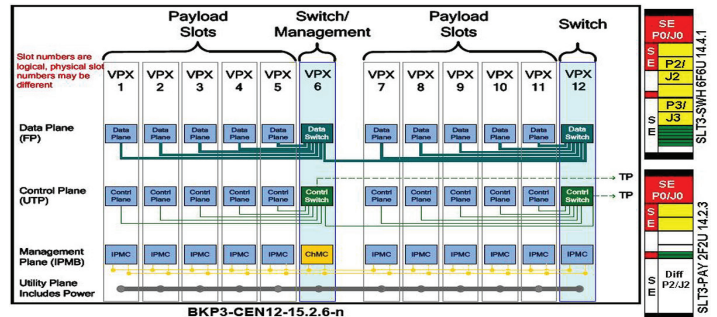
## BACKPLANE DESIGN

**MECHANICAL SPECIFICATIONS**

- 3U Height
- 12 Slots

**TOPOLOGY**

## BACKPLANE DESIGN

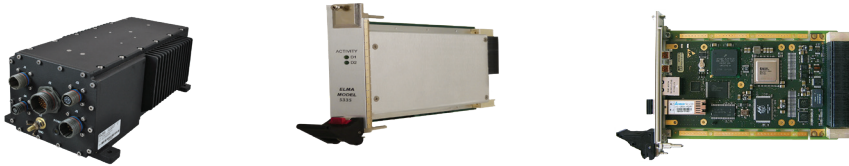


**3U 12-SLOT OpenVPX BACKPLANE**

BKP3-CEN12-15.2.6-N

**APPLICATIONS**

- › High speed image data recording for surveillance applications
- › Rugged data acquisition and storage for mission management or navigational control
- › Target tracking and high definition data capture in ground, air and shipboard systems
- › Any application requiring high speed, high capacity data record, capture and secure storage

**RELATED PRODUCTS**

- › Load boards convection or conduction cooled
- › Rear Transition Modules for I/O
- › Intel & Freescale Single Board Computers
- › Blade level networking boards (Ethernet, PCI Express)
- › Rackmount, desktop, and ATR chassis platforms
- › Ruggedization programs

**ORDERING INFORMATION**

Height	Total Slots	Description	Profile Number	Part Number
3U	12	Hierarchical star x 2, no expansion plane; control plane, supports PCI Gen 3	BKP3-CEN12-15.2.6-4	1OVX312DZL-1X11R

© Copyright 2019 by Elma Electronic, Inc. Subject to technical modifications, all data supplied without liability.

**Please contact our sales team for more details.**

China: +86 21 5866 5908  
France: +33 388 56 72 50

Germany: +49 7231 97 34 0  
Israel: +972 3 930 50 25

Singapore: +65 6479 8552  
Switzerland: +41 44 933 41 11

United Kingdom: +44 1234 838 822  
United States: +1 510 656 3400