

# VITA62 Power Supply Module

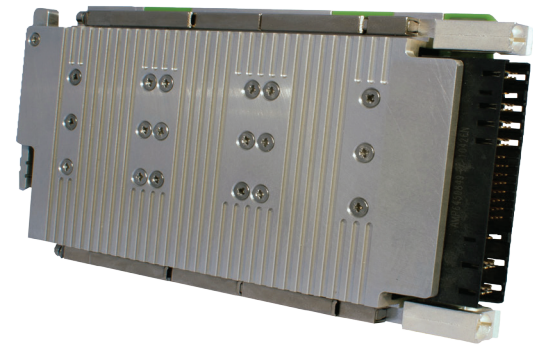
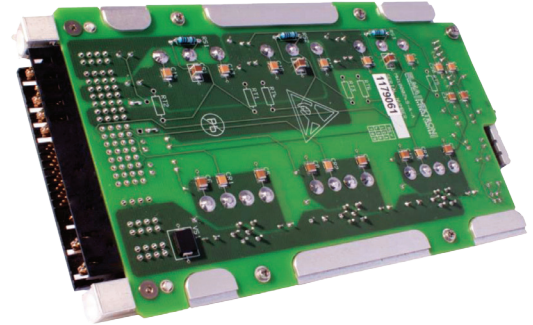
## 3U VPX PLUG-INPORT

### DESCRIPTION

Elma Electronic's conduction cooled power supply module meets the requirements of VITA 62 (VPX Modular Power Supply Standard) for use in harsh environments with 28V DC input. This is a 3U 5HP wide (1-inch) module with guide block for use in VPX systems.

The modules can be easily customized to suit individual requirements and are always closely tailored with the complete system design to ensure the best EMC performance of the overall system. The power supply modules incorporate specially designed machined cold plates to ensure high mechanical strength as well as good thermal performance.

The power supply modules are suited demanding applications such as those found in ground vehicles, avionics and naval applications where extremes of temperature, vibration, shock, humidity and EMC sealing are of critical importance.



### Features

3U plug-in power supply module with VITA 62 compliant connector and guide pins

- Up to 350W output power
- No minimum load requirements
- Efficiency > 80%
- Operational temperature range -40°C to +85°C
- Front panel status LEDs
- PSU OK signal
- Voltage rise time control
- 5HP wide (1" wide) slot
- 5 segment wedgelocks for increased thermal performance
- Ejector handle with screw lock

# VITA62 Power Supply Module

## 3U VPX PLUG-INPORT

### SPECIFICATIONS

#### Physical

Max output 350W VDC

Efficiency > 80%

Integrated input filter

Input transient protection

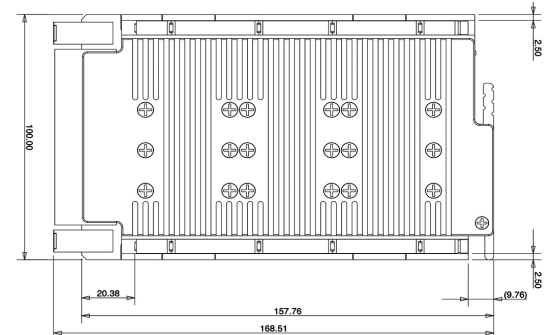
Operational temperature range -40°C to +85°C

Storage temperature range -40°C to +85°C

Current share features for redundant operation

ENABLE# and INHIBIT# input

Voltage rise time control



Side View

#### Environmental (FOR MILITARY GRADE MODULES):

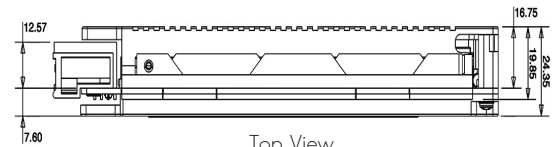
Altitude, vibration, shock, acceleration, and humidity to MIL-STD-810F

EMC to MIL-STD-461 (With additional external components)

Transient protection to MIL-STD-704 (With additional external components)

#### INPUT / OUTPUT:

Model Number	MS215342-RC
Input	18 - 36 VDC
Output 1 Voltage VS1	12 VDC
Output 1 Power	150 W
Output 2 Voltage VS2	3.3 VDC
Output 2 Power	75 VDC
Output 3 Voltage VS3	5 VDC
Output 3 Power	125 W
Output 4 Voltage (optional)	3.3 VDC AUX
Output 4 Power	3 W



Top View

#### Options

Custom output voltages

Commercial, industrial or military grade modules

Conformal coating

+3.3 VDC AUX configuration

Elma Electronic is a global designer and manufacturer of products for housing electronic systems. The company provides everything from components such as modular enclosures, cabinets and backplanes up to complete standard or custom system platforms. Solutions exist to enable the safe, reliable and cost effective deployment of commercial, industrial or military-grade convection cooled hardware in airborne, naval or avionics applications.

Additionally, full military-grade conduction cooled requirements can be accommodated with Elma's extended and versatile family of conduction cooled ATR enclosures. The addition of custom power supply modules to the range further strengthen Elma's capabilities in the rugged market places by allowing the company to manufacture the key chassis components; chassis, backplane, internal wiring and power supply thus ensuring reliable interoperability and enhanced system reliability.

# VITA62 Power Supply Module

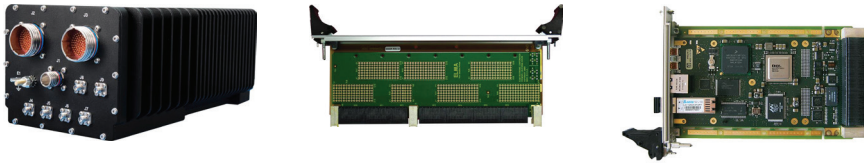
## 3U VPX PLUG-INPORT

### APPLICATIONS

Highly integrated applications such as:

- Integrated display processing, mission management and navigational control for avionics systems
- Industrial monitoring, medical equipment, and night-vision systems requiring enhanced graphics capabilities
- Shipboard systems for target tracking and high definition displays
- Applications requiring a mix of I/O options, high compute density and enhanced graphics

### RELATED PRODUCTS



- › Load boards convection or conduction cooled
- › Rear Transition Modules for I/O
- › Intel & Freescale Single Board Computers
- › Blade level networking boards (Ethernet, PCI Express)
- › Rackmount, desktop, and ATR chassis platforms
- › Ruggedization programs

### ORDER INFORMATION

Description	Model Number
-40 DegC operating version	MS215342-RC
-20DegC operating version	MS215686-RC
-55 DegC operating version	MS215867-RC

© Copyright 2021 by Elma Electronic, Inc. Subject to technical modifications, all data supplied without liability.

#### Please contact our sales team for more details.

United States: +1 510 656 3400  
 France: +33 388 56 72 50

Germany: +49 7231 97 34 0  
 Israel: +972 3 930 50 25

Singapore: +65 6479 8552  
 Switzerland: +41 44 933 41 11

United Kingdom: +44 1234 838 822