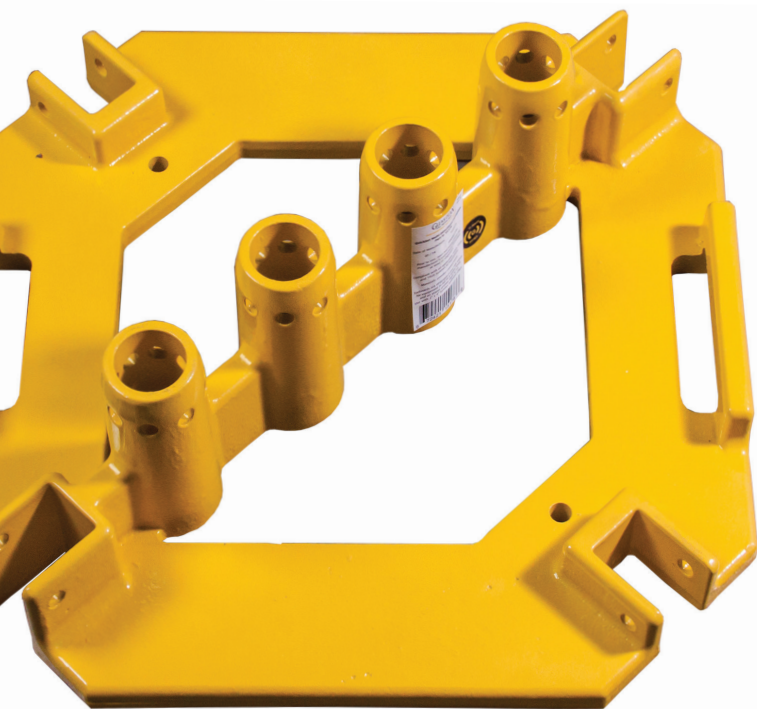


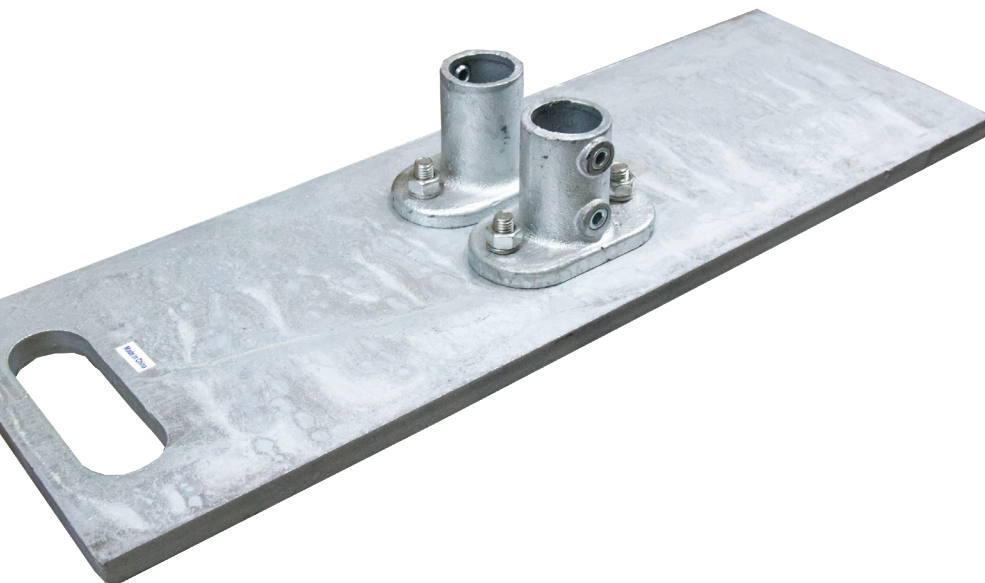


BASEPLATES

Guardrail



Guardian baseplates serve as the foundational components for the secure installation of the G-Rail™ system. Designed to ensure stability and compliance, each baseplate is engineered to meet or exceed all applicable OSHA safety requirements. Guardian offers three distinct baseplate models: Standard, Pro, and Multi-Directional with options for 2, 3, or 4 guardrail post sockets, allowing for flexible configuration and enhanced adaptability across a wide range of job site applications.



**HEIGHT SAFETY.
SIMPLIFIED.**

guardianfall.com



BASEPLATES

G-Rail™ Fall Prevention



Pro Baseplate

Part #15179



Key Features & Benefits

Galvanized or powder-coated steel construction

Superior durability and more resistant to weather

Easy to install

Pro Baseplates feature a universal compression clamp system making set up faster and simpler

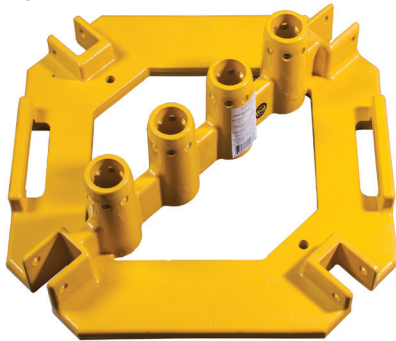
Multi-Directional and Standard Baseplates use simple set-screws and locking pins

Versatile application

Choose from 2, 3 or 4 guardrail post receivers, depending on your needs.

Multi-Directional Baseplate

Part #15178



Standard Baseplate

Part #15180



Specifications

Materials | Powder-coated steel or galvanized steel

All products are compliant with the following safety regulations:
OSHA 1910.29 and 1926.502



Part numbers	Description	Finish	Guardrail Post Receiver Sockets
15178	G-Rail™ Multi-Directional Baseplate	Powder coated	4
15179	G-Rail™ Pro Baseplate	Powder coated	3
15180	G-Rail™ Standard Baseplate	Galvanized	2

Declaration of conformity

This product has been tested in an ISO 17025 accredited laboratory in accordance with all requirements.

This product is compliant with the following safety regulations:
OSHA 1910.29 & 1926.502

For more information:

+1 (800) 466 6385

customer.service@guardianfall.com



Designed, tested, and manufactured in the **United States**