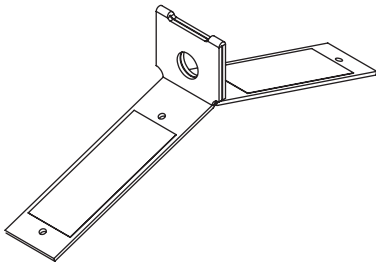


SNAPPY ANCHOR

Part # 00710; 00711; 00715-TV

Instruction Manual



Contents

| | |
|----|------------------------------------|
| 2 | Product Specific Applications |
| 2 | Worker Classifications |
| 2 | Permitted User Weight |
| 3 | Applicable Safety Standards |
| 3 | Maintenance, Cleaning, and Storage |
| 3 | Limitations |
| 3 | Compatibility |
| 4 | Components and Specifications |
| 5 | Installation and Use |
| 7 | Safety Information |
| 8 | Labels |
| 9 | Diagram |
| 9 | Inspection |
| 10 | Inspection Log |

- ✗ Do not throw instructions away.
- ⚠ Read and understand instructions before using this equipment.

Worker Classifications

- **Qualified Person:** A person with an accredited degree or certification, and with extensive experience or sufficient professional standing, who is considered proficient in planning/reviewing the conformity of fall protection and rescue systems.
- **Competent Person:** A highly trained and experienced person who is ASSIGNED BY THE EMPLOYER to be responsible for all elements of a fall safety program, including, but not limited to, its regulation, management, and application. A person who is proficient in identifying existing and predictable fall hazards, and who has the authority to stop work in order to eliminate hazards.
- **Authorized Person:** A person who is assigned by their employer to work around or be subject to potential existing fall hazards.

Applicable Safety Standards

When used in accordance with these instructions and all local, state, and federal requirements, this product meets or exceeds all applicable requirements of:

- **OSHA 1910.140**
- **OSHA 1926.502**

Product Capacity

- **Maximum user weight (including all clothing, tools, and equipment) is:**

130 - 420 lb (59-190 kg)

Product Specific Applications



Fall Arrest: May be used to support a **MAXIMUM ONE (1) Personal Fall Arrest System (PFAS)** for use in Fall Arrest applications only when used in combination with an energy absorbing device rated to reduce fall arrest forces to no greater than 1,800 lb (8 kN). Structure must withstand loads applied in the directions permitted by the system of at least 5,000 lb (22,2 kN) or maintain a 2:1 safety factor. Maximum free fall is 6 ft (1,8 m) or up to 12 ft (3,7 m) if used in combination with equipment explicitly certified for such use. **D-rings: Dorsal.**



Travel Restraint: May be used in Travel Restraint applications. Travel Restraint systems prevent workers from reaching the leading edge of a fall hazard. Always account for fully extended length of connecting equipment. Structure must withstand loads applied in the directions permitted by the system of at least 1,000 lb (4,4 kN). No free fall is permitted. Travel Restraint systems may only be used on surfaces with slopes up to 4/12 (vertical/horizontal). **D-rings: Dorsal, Sternal, Hips.**

Compatibility

When making connections, eliminate all possibility of roll-out. Roll-out occurs when interference between a connector and the attachment point causes the connector gate to unintentionally open and release.

All connections must be selected and deemed compatible with the harness by a Competent Person.

All connector gates must be self-closing, self-locking, and withstand a minimum load of 3,600 lb (16 kN).

See Diagram A on page 9.

Limitations

Fall Clearance: There must be sufficient clearance below the work surface to arrest a fall before the user strikes the ground or an obstruction. When calculating fall clearance, account for free fall, maximum arrest distance, harness stretch, a minimum 2 ft (0,6 m) safety factor, swing fall, and all other applicable factors.

See Guardian Fall Clearance Calculator:
<https://guardianfall.com/digital-resources/fall-clearance-calculator>

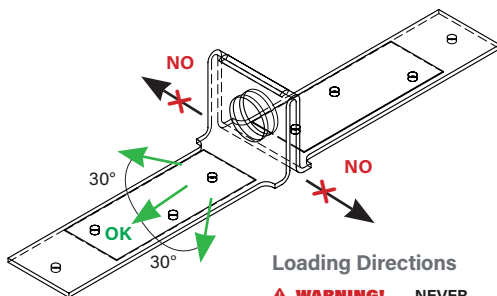
Swing Falls: Prior to installation or use, make considerations for eliminating or minimising all swing fall hazards. Swing falls occur when the anchor is not directly above the location where a fall occurs. Always work as close to in-line with the anchor point as possible. Swing falls significantly increase the likelihood of serious injury or death in the event of a fall.

Maintenance, Cleaning, and Storage

Cleaning after use is important for maintaining the safety and longevity of the Snappy Anchor. Remove all dirt, corrosives, and contaminants from the equipment before and after each use. If Snappy Anchor cannot be cleaned with plain water, use mild soap and water, then rinse and wipe dry. NEVER clean Snappy Anchor with corrosive substances.

When not in use or during transport, store equipment where it will not be affected by heat, light, excessive moisture, chemicals, or other degrading elements.

Components



Loading Directions

⚠ WARNING! NEVER load anchor improperly, it maybe necessary to use multiple anchors to properly access work area.

Specifications

- **Minimum Breaking Strength:**
5,000 lb (22,2 kN)
- **Minimum permitted service Temperature:** -30° F (-34° C)
- **Weight:** 1.1 lb (0.5 kg)

Materials

Steel.

Substrate Requirements

Minimum Thickness:

Wood: 3 ½ in must include truss or other equivalent structural support beam. Do not install on any other substrate material.

Fastener Requirements:

Wood: 16d nails (qty. 8). Do not install with fasteners other than nails.

Compatible Roof Pitch:

Installed over roof peak: 0/12 - 12/12.

Installed on flat surface: 0/12 - vertical/sheer
Never install past sheer (such as on underside of beam or slab).

Installation and Use

⚠ WARNING! Make considerations for eliminating or minimizing swing fall hazards.

⚠ WARNING! Never install past sheer (such as on underside of beam or slab).

⚠ WARNING! NEVER load anchor improperly. Prior to installation, refer to anchorage positioning chart (pg. 9) to ensure installation location will satisfy intended work application(s).

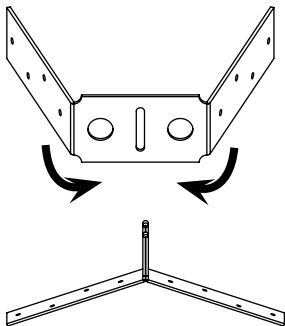
⚠ WARNING! Snappy Anchor is a temporary anchorage connector ONLY. Dispose of Snappy Anchor upon removal from first installation location.

■ Step 1

Determine installation location for Snappy Anchor; ensure location is free of debris, rot, decay, cracking, and hazardous materials. NEVER install on gable ends, fascias, rake ends, overhangs, bottom cords, collar boards, spliced sections, or substrate incapable of withstanding application minimum loads. If unable to determine proper installation location, consult jobsite Competent Person.

■ Step 2

Fit Snappy Anchor to roof by bending in sides until anchor lies flush against substrate.

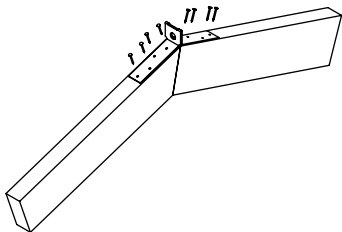


■ Step 3

Place Snappy Anchor over roof ridge, and further adjust to fit pitch if necessary. Snappy Anchors must be installed a MINIMUM 10 ft from gable ends.

■ Step 4

All eight (8) fastener installation holes on the Snappy Anchor MUST be used. Fasteners MUST be fully embedded into substrate.



■ Step 5

Attach a complete and compatible PFAS to Snappy Anchor Connection Point. Connector MUST be a self-closing and self-locking carabiner or snap hook. Ensure all possibility of roll-out is eliminated.

Safety Information

⚠ WARNING! Failure to understand and comply with safety regulations may result in serious injury or death. Regulations included herein are not all-inclusive, are for reference only, and are not intended to replace a Competent Person's judgment or knowledge of federal or state standards.

⚠ CAUTION! Understand the definitions of those who work near, or who may be exposed to, fall hazards.

⚠ WARNING! Use of equipment in unintended applications may result in serious injury or death. Maximum 1 attachment per connection point.

Do not alter equipment.

Workplace conditions, including, but not limited to, corrosive chemicals, electrical shock, sharp objects or edges, machinery, flame/high heat, abrasive or uneven surfaces, UV exposure, and severe or prolonged weather conditions, must be assessed by a Competent Person (CP) before fall protection equipment is selected. The presence of any/all of these conditions may have negative effects on product performance or service lifetime.

The analysis of the workplace must anticipate where workers will be performing their duties, the routes they will take to reach their work, and the potential and existing fall hazards they may be exposed to. Fall protection equipment must be chosen by a CP. Selections must account for all potential hazardous workplace conditions. All fall protection equipment should be purchased new and in an unused condition.

Fall protection systems must be selected and installed under the supervision of a CP, and used in a compliant manner. The system must be designed in a manner compliant with all federal, state, and safety regulations. Forces applied to anchors must be calculated by a CP.

Harnesses and connectors selected must be compliant with manufacturer's instructions, and must be of compatible size and configuration. Snap hooks, carabiners, and other connectors must be selected and applied in a compatible fashion. All risk of disengagement must be eliminated. All snap hooks and carabiners must be self-locking and self-closing, and must never be connected to each other.

See Diagram A on page 9.

A pre-planned rescue procedure in the case of a fall is required. The rescue plan must be project-specific. The rescue plan must allow for employees to rescue themselves, or provide an alternative means for their prompt rescue to minimise post fall suspension time. Store rescue equipment in an easily accessible and clearly marked area.

Training of Authorized Persons (APs) to correctly erect, disassemble, inspect, maintain, store, and use equipment must be provided by a CP. Training must include the ability to recognise fall hazards, minimise the likelihood of fall hazards, and the correct use of personal fall arrest systems.

NEVER use fall protection equipment of any kind to hang, lift, support, or hoist tools or equipment, unless explicitly certified for such use.

Equipment subjected to forces of fall arrest must immediately be removed from use.

Age, fitness, and health conditions can seriously affect the worker should a fall occur. Consult a doctor if there is any reason to doubt a user's ability to safely withstand fall arrest forces or perform set-up of equipment. Pregnant women and minors MUST NOT use this equipment.

Physical harm may still occur even if fall safety equipment functions correctly. Sustained post-fall suspension may result in serious injury or death. Use trauma relief straps to reduce the effects of suspension trauma.

Labels

1

GUARDIAN

SNAPPY ANCHOR

Part #: _____ DOM: _____

⚠ WARNING Prior to use, read and understand all manufacturer's instructions. Failure to follow instructions may result in serious injury or death.

OSHA 1926.502 & 1910.140

Material: Steel

Capacity Range (incl. equipment): 130-420 lb (59 - 190 kg)

Connections must be selected and deemed compatible with the Snappy Anchor by a Competent Person. Refer to instructions for proper connection methods.


Temporary anchorage connector ONLY.
For 1 installation ONLY.
IMMEDIATELY dispose after removal.

MUST install into roof truss or support beam. All (8) fastener holes MUST be used.

DO NOT REMOVE LABELS

guardianfall.com 90042 Rev. H-1

2



IMMEDIATELY remove from use if exposed to forces of fall arrest.
NEVER for use with horizontal lifelines.
Avoid contact with all hazards, including, but not limited to, electricity, chemicals, and heat.
DO NOT side load.
Maximum 1 connection per anchor.
User must inspect prior to EACH use. Competent Person must complete formal inspection every 12 months. Competent Person to inspect and initial.

| Inspection Date | Initials |
|-----------------|----------|
| | |
| | |
| | |
| | |

Date of First Use _____

Made in Malaysia 90042 Rev. H-2

1

Snappy Anchor
Part #: _____ DOM: _____

Prior to use, read and understand all manufacturer's instructions provided with equipment at time of shipment from manufacturer.

OSHA 1926.502 & 1910.140

Material: Steel
Capacity Range (incl. equipment): 130-420 lb (59 - 190 lb)

Connections must be selected and deemed compatible with the Snappy Anchor by a Competent Person. Refer to instructions for proper connection methods.

Temporary anchorage connector ONLY.
For 1 installation ONLY.
IMMEDIATELY dispose after removal.

MUST install into roof truss or support beam.
All (8) fastener holes MUST be used.

DO NOT REMOVE LABELS

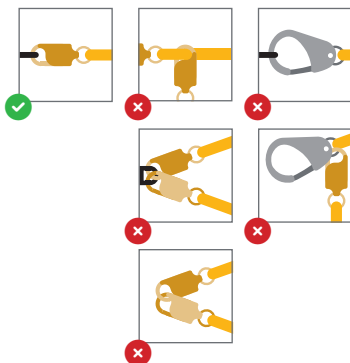
guardianfall.com

2

IMMEDIATELY remove from use if exposed to forces of fall arrest.
NEVER for use with horizontal lifelines.
Avoid contact with all hazards, including, but not limited to, electricity, chemicals, and heat.
MAXIMUM 1 connection.
DO NOT side load.
User must inspect prior to EACH use. Competent Person must complete formal inspection every 12 months. Competent Person to inspect and initial.

Inspection Grid
Date of first use.
Made in Malaysia
90042 Rev H

Diagram A - Connections



Inspection

Prior to EACH use, inspect Snappy Anchor for deficiencies, including, but not limited to, corrosion, deformation, pits, burrs, rough surfaces, sharp edges, cracking, rust, paint build-up, excessive heating, alteration, broken stitching, fraying, and missing or illegible labels. **IMMEDIATELY remove Snappy Anchor from service if defects or damage are found, or if exposed to forces of fall arrest.**

Ensure that applicable work area is free of all damage, including, but not limited to, debris, rot, rust, decay, cracking, and hazardous materials. Ensure that work area will support the application-specific minimum loads set forth in this manual. Work area **MUST** be stable.

At least every 12 months, a Competent Person (CP) other than the user must inspect Snappy Anchor.

See Inspection Log on page 10.

Inspections MUST be recorded in inspection log in instruction manual and on equipment inspection grid label. The CP must sign their initials in the box corresponding to the month and year the inspection took place.

During inspection, consider all applications and hazards the harness has been subjected to.

Product lifetime is indefinite as long as it passes pre-use and CP inspections.

This inspection log must be specific to one Snappy Anchor. Separate inspection logs must be used for each Snappy Anchor. All inspection records must be made visible and available to all users at all times. If equipment fails inspection it must be discarded immediately.

[illegible]



Notes



Notes



USA

607 East Sam Houston Parkway South
Suite 800
Pasadena, TX 77503
800 466 6385
customer.service@guardianfall.com

CANADA

580 Notre Dame Avenue, Unit 16
Sudbury, ON
P3C 5L2
800 466 6385
customer.service@guardianfall.com

WARRANTY: Guardian warrants to Buyer that all products are free from defects in material, workmanship, and design (if a Supplier-responsible design), however this warranty does not cover conditions resulting from normal wear and tear, neglect, abuse, accident or otherwise. Guardian's obligations under this warranty apply for the lifetime of the products and are limited to the replacement of product only. This warranty is not transferable to any other Guardian service and does not apply to product that is resold after having been put into service. No other person, firm, entity, or the like is authorized to assume or assign for Guardian any other liability in connection with the sale or use of Guardian's products. Furthermore, this warranty is void if any product is changed or altered in any way, or if the product is used in a manner other than for which it is intended. There are no implied warranties of merchantability or fitness for a particular purpose, which are specifically disclaimed.