

DIABLO CABLE SELF-RETRACTING LIFELINE

Parts: 10967; 10968; 10982

Instruction Manual



2 Product Specific Applications

2 For All Product Applications

2 Applicable Safety Standards

2 Worker Classifications

2 Compatibility

3 Limitations

3 Installation and Use

3 Maintenance, Cleaning, and Storage

4 Specifications

4 Materials

7 Safety Information

8 Labels

9 Diagrams

9 Inspection

10 Inspection Log

✗ Do not throw instructions away.

⚠ Read and understand instructions before using this equipment.

Product Specific Applications



May be used to support a MAXIMUM 1 in a **Personal Fall Arrest System (PFAS)** for use in Fall Arrest applications.

Structure must withstand loads applied in the directions permitted by the system of at least 5,000 lb (22,2 kN). No free fall is permitted.

D-ring: Dorsal



May be used in **Travel Restraint** applications. Restraint systems prevent a worker from reaching the leading edge of

a fall hazard. Always account for fully extended length of connecting equipment. Structure must withstand loads applied in the directions permitted by the system of at least 1,000 lb (4,4 kN). No free fall is permitted. Restraint systems may only be used on surfaces with slopes up to 4/12 (vertical/horizontal).

D-rings: Dorsal

Applicable Safety Standards

Meets or exceeds:

- **OSHA 1910.140**
- **OSHA 1926.502**

For All Product Applications

- **Maximum user weight (including all clothing, tools, and equipment) is:**

OSHA(LE): 100 - 310 lb (45 - 141 kg)

OSHA(Non-LE): 100 - 420 lb (45 - 191 kg)

Worker Classifications

- **Qualified Person:** A person with an accredited degree or certification, and with extensive experience or sufficient professional standing, who is considered proficient in planning/reviewing the conformity of fall protection and rescue systems.
- **Competent Person:** A highly trained and experienced person who is ASSIGNED BY THE EMPLOYER to be responsible for all elements of a fall safety program, including, but not limited to, its regulation, management, and application. A person who is proficient in identifying existing and predictable fall hazards, and who has the authority to stop work in order to eliminate hazards.
- **Authorized Person:** A person who is assigned by their employer to work around or be subject to potential existing fall hazards.

Compatibility

When making connections to the SRL, eliminate all possibility of roll-out. Roll-out occurs when interference between a connector and the attachment point causes the connector gate to unintentionally open and release.

All connections must be selected and deemed compatible with the SRL by a Competent Person.

All connector gates must be self-closing, self-locking, and withstand a minimum load of 3,600 lb (16 kN).

See Diagram B on page 7.

Limitations

Fall Clearance: There must be sufficient clearance below the work surface to arrest a fall before the user strikes the ground or an obstruction. When calculating fall clearance, account for a MINIMUM 2 ft (0,6 m) safety factor, deceleration distance, user height, length of lanyard/SRL, harness stretch, free fall, and all other applicable factors.

See Diagram A on page 7.

Swing Falls: Prior to installation or use, make considerations for eliminating or minimizing all swing fall hazards. Swing falls occur when the anchor is not directly above the location where a fall occurs. Always work as close to in line with the anchor point as possible. Swing falls significantly increase the likelihood of serious injury or death in the event of a fall.

Maintenance, Cleaning, and Storage

Cleaning after use is important for maintaining the safety and longevity of the SRL. Remove all dirt, corrosives, and contaminants from the SRL before and after each use. If SRL cannot be cleaned with plain water, use mild soap and water, then rinse and wipe dry. NEVER clean SRL with corrosive substances.

When not in use or during transport, store equipment where it will not be affected by heat, light, excessive moisture, chemicals, or other degrading elements.

⚠ WARNING! Snap hook end must be connected to harness dorsal D-ring.

- SRL-LEs are tested and certified for horizontal use over a steel edge without burrs. SRL-LEs may be used over similar surfaces, such as metal sheeting or other steel formations.
- The allowable angle of redirection of the lifeline portion of SRL-LEs at the leading edge of a fall hazard MUST be at least 90° (see Diagram C).

- Anchor point MUST be situated no lower than the leading edge of applicable fall hazard(s).
- Prior to use, a Competent Person MUST calculate adequate fall clearance (see pg. 2).
- Setback distance: As determined by product testing, Guardian Fall Protection SRL-LEs are not required to be setback any specific distance from the leading edge of applicable fall hazard(s).
- **NEVER work on the far side of an opening that is opposite the SRL-LE anchorage point.**
- **In the event of a fall over the edge, special rescue measures may be necessary. Always account for use of SRL-LE in job site rescue plan developed by job site Competent Person.**

Installation and Use

■ Step 1

All components of PFAS must be selected and deemed compatible with SRL by a Competent Person.

■ Step 2

Ensure structure to which SRL is attached, and on which work is performed, is free of all hazards, including, but not limited to, debris, rot, rust, sharp or abrasive edges and surfaces, and hazardous materials.

■ Step 3

Ensure 100% tie-off will be maintained at all times, which may require the use of a backup or supplementary fall protection system.

■ Step 4

Attach Diablo SRL to compatible anchorage connector as determined by jobsite Competent Person.

Specifications

- **User weight range (including all clothing, tools, and equipment):**
 OSHA(LE): 100 - 310 lb (45 - 141 kg)
 OSHA(Non-LE): 100 - 420 lb (45 - 191 kg)
- **Maximum Arrest Force: 1,800 lb (8 kN)**
- **Average Arrest Force: 1,350 lb (6 kN)**
- **Maximum Arrest Distance:**
 Non-LE: 3 ft 6 in (1,1 m)
 LE: 8 ft 6 in (2,6 m)

See Diagram A on page 9.

- **Minimum Required Fall Clearance:**
 Non-LE: 7 ft (2,1 m)
 LE: 17 ft (5,2 m)
- **Permitted Service Temperature Range:**
 -40°F to 130°F (-40°C to 54°C)

Note: Non-LE = Anchor at or above D-ring height

Materials

3/16 in (4,8 mm) Galvanized Steel cable,
 aluminum, polyolefin, polyester.



Part #	Length	Description
10968	50 ft (15,2 m)	SRL, Diablo, Galvanized Steel Cable with Steel Snap Hook
10982	60 ft (18,2 m)	SRL, Diablo, Nylon-Coated Galvanized Steel Cable with Steel Snap Hook
10967	65 ft (20 m)	SRL, Diablo, Galvanized Steel Cable with Steel Snap Hook

Safety Information

⚠ WARNING! Failure to understand and comply with safety regulations may result in serious injury or death. Regulations included herein are not all-inclusive, are for reference only, and are not intended to replace a Competent Person's (CP) judgment or knowledge of federal or state standards.

Do not alter equipment.

Do not misuse equipment.

Workplace conditions, including, but not limited to, flame, corrosive chemicals, electrical shock, sharp objects, machinery, abrasive substances, weather conditions, and uneven surfaces, must be assessed by a Competent Person before fall protection equipment is selected.

The analysis of the workplace must anticipate where workers will be performing their duties, the routes they will take to reach their work, and the potential and existing fall hazards they may be exposed to. Fall protection equipment must be chosen by a Competent Person. Selections must account for all potential hazardous workplace conditions. All fall protection equipment should be purchased new and in an unused condition.

Fall protection systems must be selected and installed under the supervision of a Competent Person, and used in a compliant manner. Fall protection systems must be designed in a manner compliant with all federal, state, and safety regulations. Forces applied to anchors must be calculated by a Competent Person.

Harnesses and connectors selected must be compliant with manufacturer's instructions, and must be of compatible size and configuration. Snap hooks, carabiners, and other connectors must be selected and applied in a compatible fashion. All risk of disengagement must be eliminated. All snap hooks and carabiners must be self-locking and self-closing, and must never be connected to each other.

See Diagram B on page 7.

A pre-planned rescue procedure in the case of a fall is required. The rescue plan must be project-specific. The rescue plan must allow for employees to rescue themselves, or provide an alternative means for their prompt rescue. Store rescue equipment in an easily accessible and clearly marked area.

Training of Authorized Persons to correctly erect, disassemble, inspect, maintain, store, and use equipment must be provided by a Competent Person. Training must include the ability to recognize fall hazards, minimize the likelihood of fall hazards, and the correct use of personal fall arrest systems.

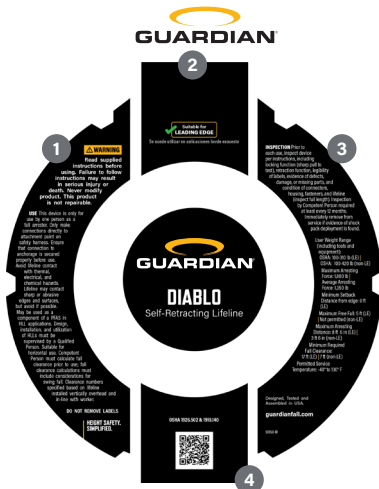
NEVER use fall protection equipment of any kind to hang, lift, support, or hoist tools or equipment, unless explicitly certified for such use.

Equipment subjected to forces of fall arrest must immediately be removed from use.

Age, fitness, and health conditions can seriously affect the worker should a fall occur. Consult a doctor if there is any reason to doubt a user's ability to withstand and safely absorb fall arrest forces or perform set-up of equipment. Pregnant women and minors must not use this equipment.

Physical harm may still occur even if fall safety equipment functions correctly. Sustained post-fall suspension may result in serious injury or death. Use trauma relief straps to reduce the effects of suspension trauma.

Labels



1 **WARNING** Read supplied instructions before using. Failure to follow instructions may result in serious injury or death. Never modify product. This product is not repairable.

USE THIS device is only for use by one person as a fall arrester. Only make connections directly to attachment point on safety harness. Ensure that connection to anchorage is secured properly before use. Avoid lifeline contact with thermal, electrical, and chemical hazards. Lifeline may contact sharp or abrasive edges and surfaces, but avoid if possible. May be used as a component of a PFAS in HLL applications. Design, installation, and utilization of HLLs must be supervised by a Qualified Person. Suitable for horizontal use. Competent Person must calculate fall clearance prior to use; fall clearance calculations must include considerations for swing fall. Clearance numbers specified based on lifeline installed vertically overhead and in-line with worker.

DO NOT REMOVE LABELS

2 Suitable for Leading Edge
Se puede utilizar en aplicaciones borde expuesto

3 **INSPECTION** Prior to each use, inspect device per instructions, including locking function (sharp pull to test), retraction function, legibility of labels, evidence of defects, damage, or missing parts, and condition of connectors, housing, fasteners, and lifeline (inspect full length). Inspection by Competent Person required at least every 12 months. Immediately remove from service if evidence of shock pack deployment is found.

User Weight Range (including tools and equipment): OSHA: 100-310 lb (LE) | OSHA: 100-420 lb (non-LE)

Average Arresting Force: 1,350 lb | **Maximum Arresting Force:** 1,800 lb

Minimum Setback Distance from edge: 0" (LE)

Maximum Arresting Distance: 8 ft 6 in (LE) | 3 ft 6 in (non-LE)

Maximum Free Fall: 5 ft (LE) | Not permitted (non-LE)

Minimum Required Fall Clearance: 17 ft (LE) | 97 ft (non-LE)

Permitted Service Temperature: -40° to 130° F

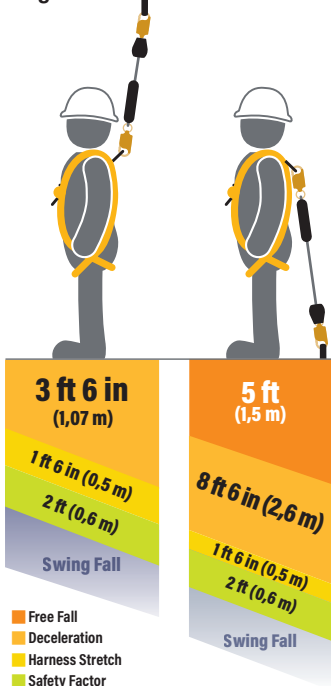
Designed, Tested and Assembled in USA.

guardianfall.com

90150-M

4 OSHA 1926.502 & 1910.140

Diagram A - Fall Clearance



⚠ WARNING! Eliminate Swing Fall whenever possible! If swing fall exists, always account for additional fall clearance.

⚠ CAUTION! Fall clearance calculation shown is based on a standing worker falling directly in-line with anchor point.

⚠ SAMPLE CALCULATION ONLY. Always refer to connector instructions for product-specific clearance information.

Diagram B - Connections

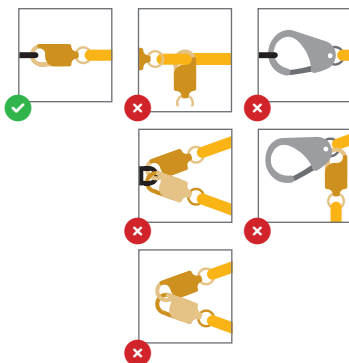
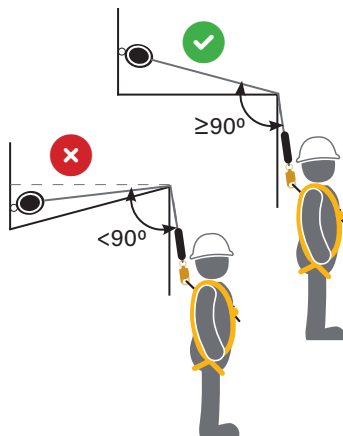


Diagram C - Permitted Lifeline Redirection Angle



Inspection

Prior to EACH use, inspect SRL for deficiencies, including, but not limited to, corrosion, deformation, pits, burrs, rough surfaces, sharp edges, cracking, rust, paint build-up, excessive heating, alteration, broken stitching, fraying, and missing or illegible labels. IMMEDIATELY remove SRL from service if defects or damage are found, or if exposed to forces of fall arrest.

Take special care to inspect stitching impact indicator located at webbing loop at top of SRL. Stitching must be intact and not broken, frayed, or otherwise compromised. If red tag is visible, remove from service.

Ensure that applicable work area is free of all damage, including, but not limited to, debris, rot, rust, decay, cracking, and hazardous materials. Ensure that work area will support the application-specific minimum loads set forth in this manual. Work area MUST be stable.

At least every 12 months, a Competent Person (CP) other than the user must inspect SRL.

Inspections MUST be recorded in inspection log in instruction manual and on equipment inspection grid label. The Competent Person must sign their initials in the box corresponding to the month and year the inspection took place.

During inspection, consider all applications and hazards the SRL has been subjected to.

Product lifetime is indefinite as long as it passes pre-use and Competent Person inspections.

This inspection log must be specific to one SRL. Separate inspection logs must be used for each SRL. All inspection records must be made visible and available to all users at all times. If equipment fails inspection it must be discarded immediately.



Inspection Log

Serial No:	Date of first issue:
Model #:	User:

[illegible]



Guardian
607 East Sam Houston Parkway South, Suite 800
Pasadena, TX 77503
USA

+1 (800) 466 6385
customer.service@guardianfall.com

guardianfall.com

Guardian® and its logo are registered trademarks of Pure Safety Group Inc. dba Guardian Fall in the US and other countries.