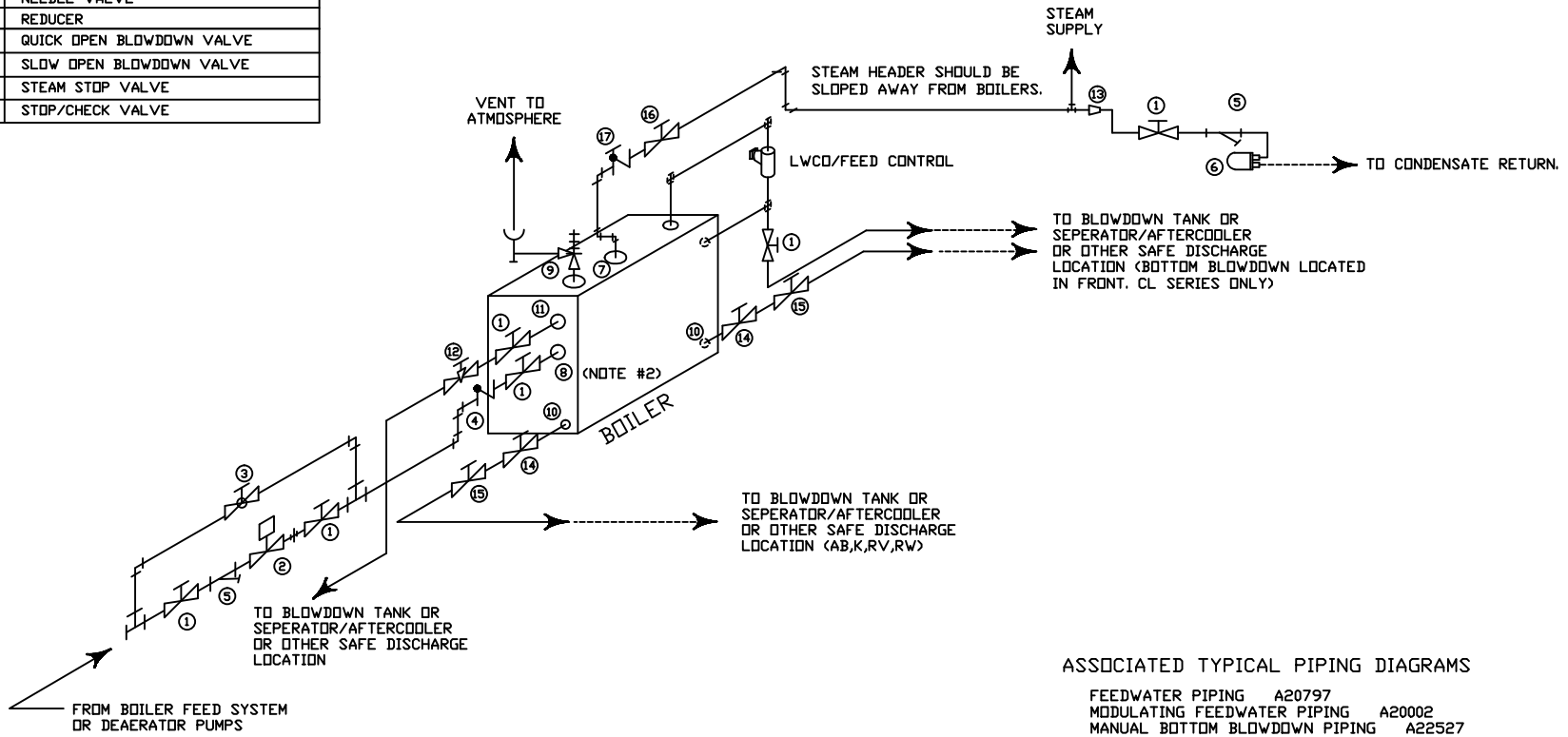


IDENTIFICATION KEY

1.	GATE VALVE
2.	SOLENOID / MOTORIZED VALVE
3.	GLOBE VALVE
4.	CHECK VALVE
5.	STRAINER
6.	F/T DRIP TRAP
7.	SUPPLY CONNECTION
8.	FEED CONNECTION
9.	RELIEF VALVE'S
10.	BLOWDOWN CONNECTION
11.	SURFACE BLOWDOWN CONNECTION
12.	NEEDLE VALVE
13.	REDUCER
14.	QUICK OPEN BLOWDOWN VALVE
15.	SLOW OPEN BLOWDOWN VALVE
16.	STEAM STOP VALVE
17.	STOP/CHECK VALVE




ASSOCIATED TYPICAL PIPING DIAGRAMS

- FEEDWATER PIPING A20797
- MODULATING FEEDWATER PIPING A20002
- MANUAL BOTTON BLOWDOWN PIPING A22527
- MANUAL BOTTON BLOWDOWN PIPING (RW SERIES) A20456
- MANUAL SURFACE BLOWDOWN PIPING A20837

NOTES:

- 1.) ALL PIPING, FITTINGS AND VALVES SELECTED ARE TO MEET OR EXCEED THE APPLICABLE ASME BOILER PRESSURE VESSEL CODE AND ASME PIPING CODE
- 2.) FEED WATER CONNECTION FOR DR SERIES IS LOCATED ON TOP OF STEAM DRUM

REVISION #1		 BRYAN STEAM 783 North Chili Avenue Peru, IN 46970			
APPROVED BY	DATE				
ENGINEERING MANAGER	_____	DWG. TITLE:			
REVISOR	_____	TYPICAL PIPING FOR SINGLE STEAM BOILER			
DRAWN BY:	DATE:	SCALE:	DISC:	DWG. NO.:	FORM. NO.:
SKN	10/15/14	NONE	FS	A21526	2420