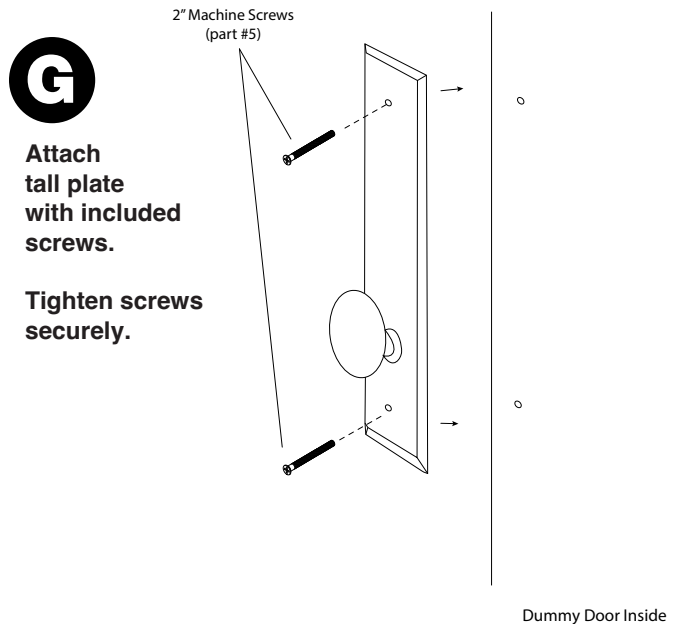
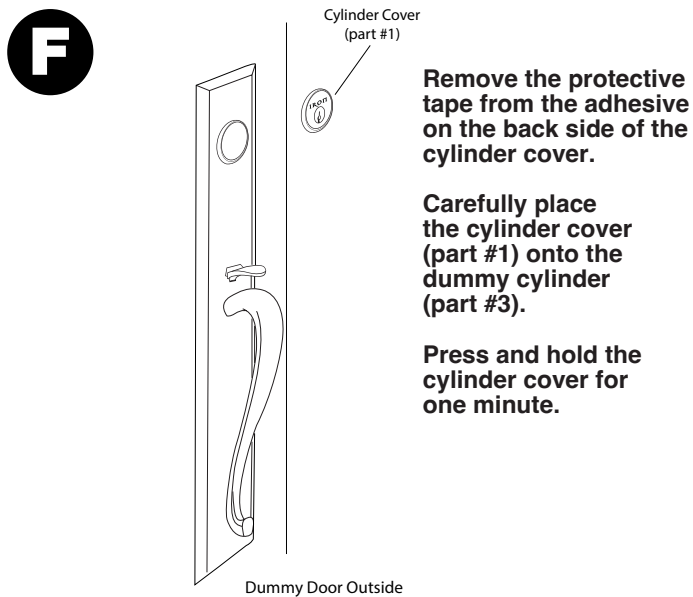
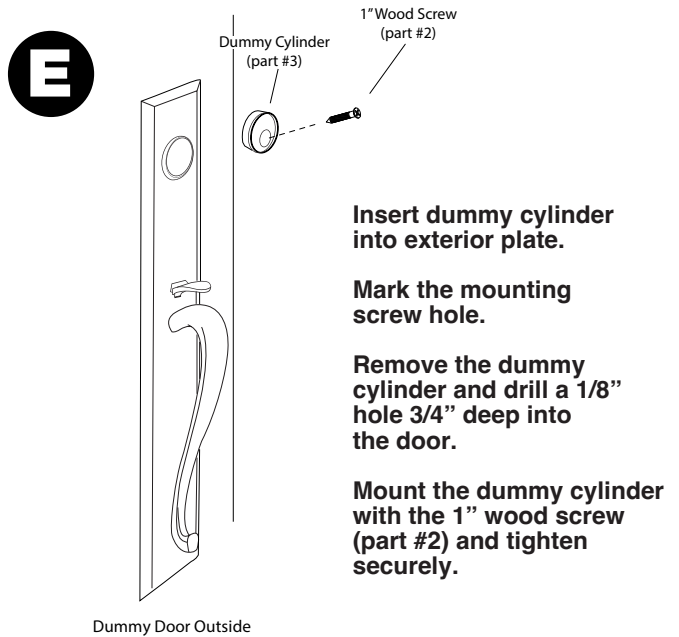
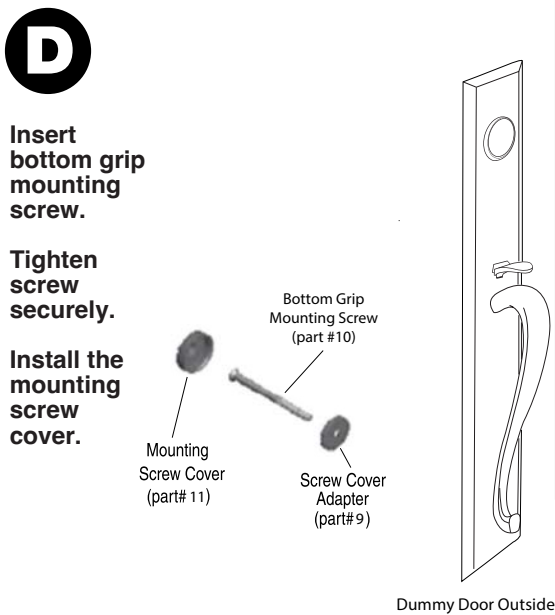
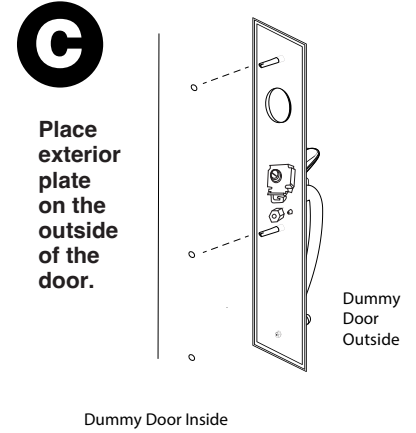
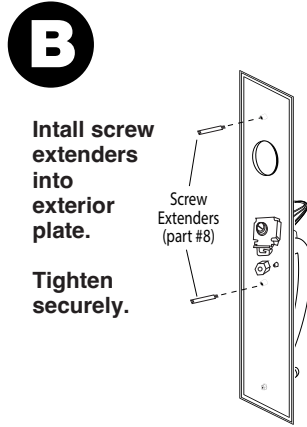
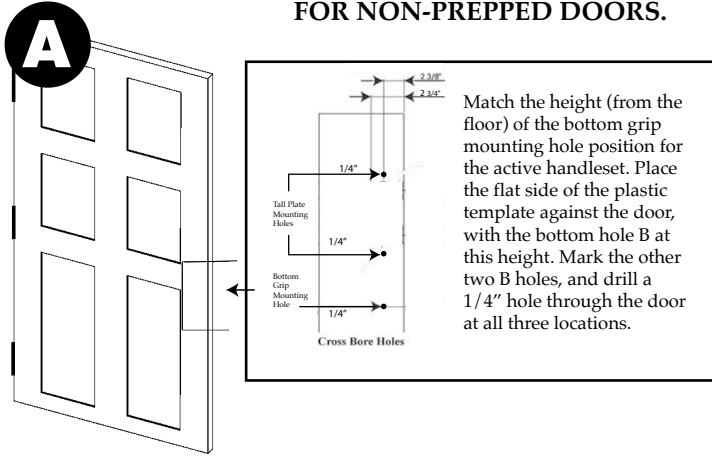


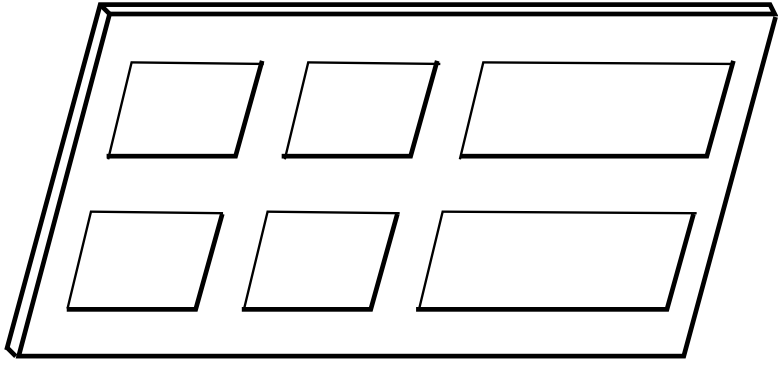
Note: Handlesets fit doors 1-3/4" to 2" thick.



Exploded Drawing Single Dummy Handleset– Tall Plate with One-Piece Exterior Plate

<i>Part Number</i>	<i>Part Description</i>
--------------------	-------------------------

- | | |
|-----|---|
| 1. | Cylinder Faceplate |
| 2. | 1" Wood Mounting Screw |
| 3. | Dummy Cylinder |
| 4. | One-Piece Exterior Plate |
| 5. | 2" Machine Screws (2) for 1-3/4" thick doors. 2-1/4" Machine Screws (2) for 2" thick doors. |
| 6. | Handleset Grip |
| 7. | Tall Plate |
| 8. | Screw Extenders |
| 9. | Screw Cover Adapter |
| 10. | 2-1/2" Bottom Grip Mounting Screw for 1-3/4" thick doors. 2-3/4" for 2" thick doors. |
| 11. | Mounting Screw Cover |



1. Place the flat side of the plastic template against the door.
2. Position the bottom grip mounting hole B at the same height as the active handleset.
3. Use position of top two small holes (B) to mark and drill 1/4" holes through the door.

