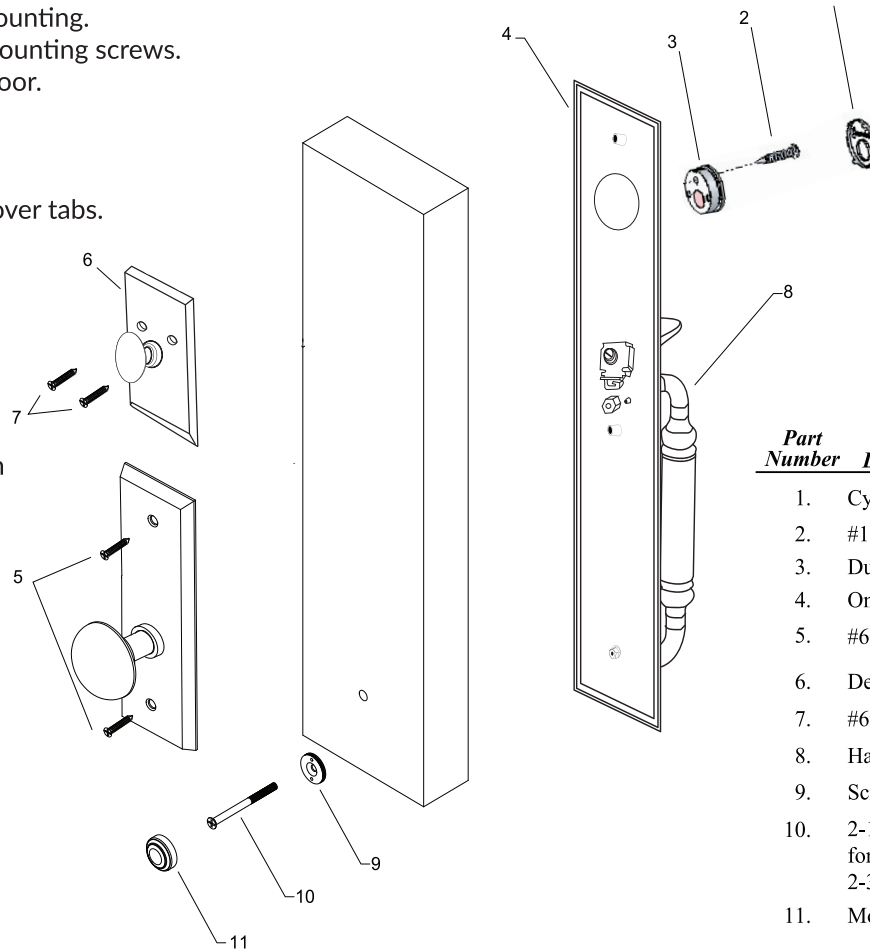


Ageless Iron Single Dummy Handleset Installation

1

- 1) Install the active handleset first.
- 2) Position the bottom grip mounting hole for the dummy at the same location (height from floor, backset) as used for the active handleset.
- 3) Drill a 1/4" diameter hole through the door for the bottom grip mounting.
- 4) Attach the exterior handleset to the door using the bottom grip mounting screws.
- 5) Make certain the handleset plate is parallel with the edge of the door.
- 6) Mark the location of the dummy cylinder (3), and a 1/8" dia. hole. Attach the dummy cylinder with the included 1" long wood screw.
- 7) Carefully place the cylinder cover (1) onto the dummy cylinder (3), and secure by using a miniature screwdriver to ben the cylinder cover tabs.
- 8) Fully tighten the bottom grip mounting screw (8), and install the mounting screw cover (9).
- 9) Position the dummy interior knob or lever at the same location (height from floor, backset) as used for the active handleset.
- 10) Mark and drill the mounting holes with a 7/64" drill.
- 11) Insert the mounting screws and tighten until snug.
DO NOT USE POWER TOOLS!
- 12) Position the dummy deadbolt thumbturn (10) at the same location (height from floor, backset) as used for the active handleset.
- 13) Mark the drill mounting holes with a 7/64" drill.
- 14) Insert the two wood mounting screws and tighten until snug.
DO NOT USE POWER TOOLS!



<u>Part Number</u>	<u>Part Description</u>
1.	Cylinder Faceplate
2.	#10x 1" Mounting Screw
3.	Dummy Cylinder
4.	One-Piece Exterior Plate
5.	#6 x 1" Wood Screws
6.	Deadbolt Thumbturn
7.	#6x 1" Wood Screws
8.	Handleset Grip
9.	Screw Cover Adapter
10.	2-1/2" Bottom Grip Mounting Screw for 1-3/4" thick doors. 2-3/4" for 2" thick doors.
11.	Mounting Screw Cover

AGELESS IRON®

www.AgelessIronHardware.com

For assistance call 800-522-7336 Monday through Friday 7am to 4pm Mountain Time

PK 804 12072022