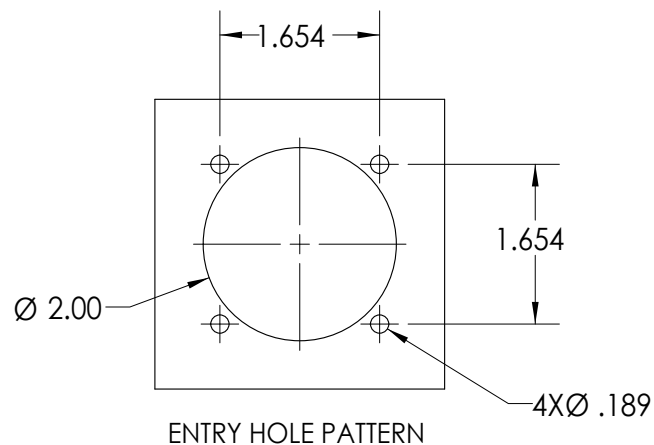
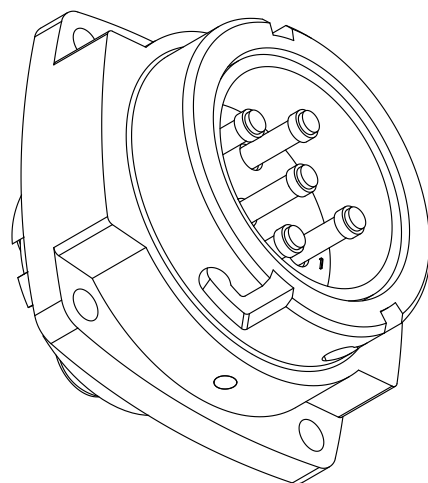
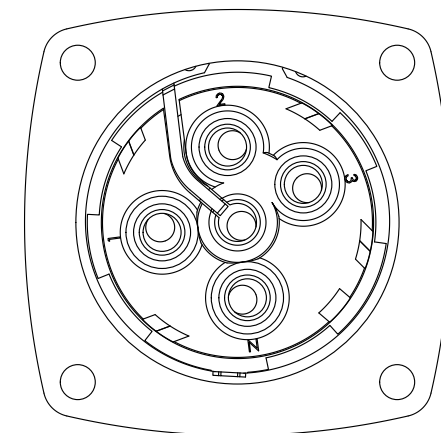
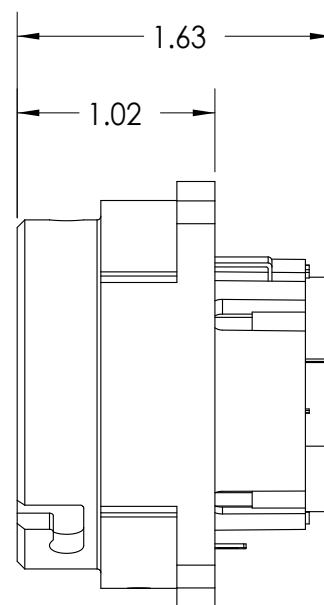
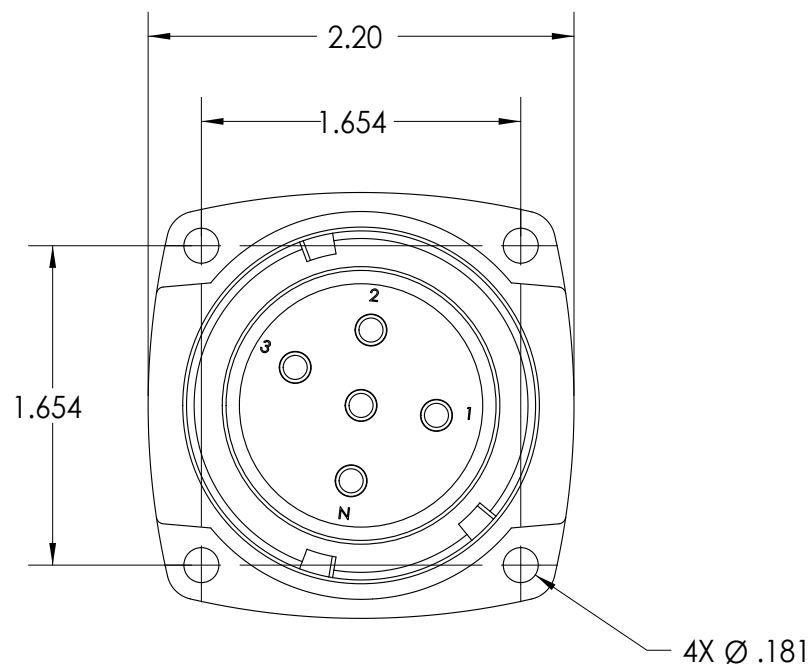




This drawing is the property of MELTRIC Corporation, Franklin (Milwaukee), Wisconsin, USA. Any unauthorized copying of this drawing by any means, or disclosure of its contents to any person not authorized by MELTRIC Corporation or its agents to receive it, is strictly prohibited.

ENG/RD/06 REV: 20 ISSUED DATE: 11/15/11



ENTRY HOLE PATTERN

| TOLERANCES UNLESS OTHERWISE SPECIFIED | |  A COMPANY OF MARÉCHAL ÉLECTRIC | | |
|--|--|---|--------------|-------------------|
| MACHINED SURFACES $\sqrt[125]{\text{MAX}}$ | ENGLISH 0.X ± 0.05 0.XX ± 0.01 0.XXX ± 0.005 | DRAWN | APPROVED | DRAWING TITLE: |
| GROUND SURFACES $\sqrt[32]{\text{MAX}}$ | | DATE: | SCALE | MATERIAL: |
| ANGLE TOLERANCE $\pm 1^\circ$ | | | NTS | BARE METAL CASING |
| REMOVE BURRS & SHARP EDGES TO .015 MAX. | | SHEET: | PART NUMBER | REVISION |
|  DIMENSIONS SHOWN IN OVALS ARE INSPECTION DIMENSIONS. | | 1 OF 1 | 09-280xx-185 | |