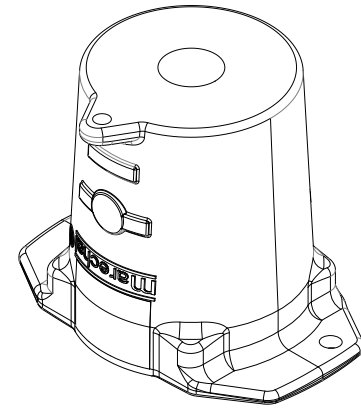
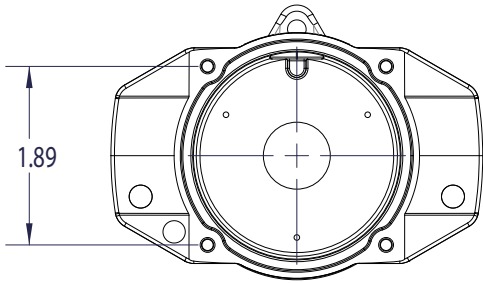
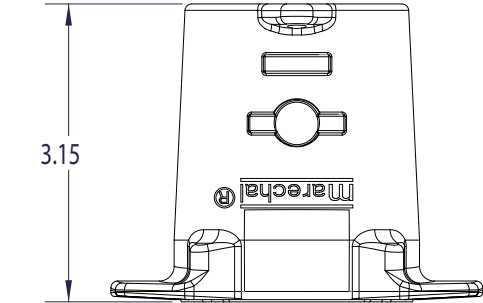
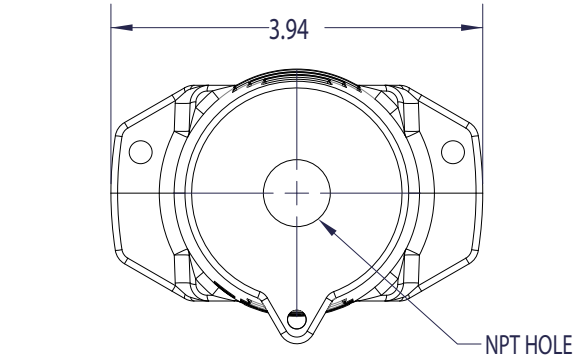
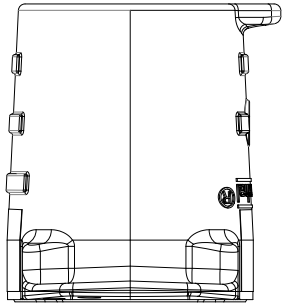


This drawing is the property of MELTRIC Corporation, Franklin (Milwaukee), Wisconsin, USA. Any unauthorized copying of this drawing by any means, or disclosure of its contents to any person not authorized by MELTRIC Corporation or its agents to receive it, is strictly prohibited.

ENC-ROD 006 REV: 21 ISSUED DATE: 10/7/16

G F E D C B A



PART NUMBER	NPT HOLE SIZE
552PON05	1/2" NPT
552PON07	3/4" NPT
552PON10	1" NPT
552PON12	1-1/4" NPT

TOLERANCES UNLESS OTHERWISE SPECIFIED		MELTRIC A COMPANY OF MARECHAL ELECTRIC			
MACHINED SURFACES	125 MAX	DRAWN		APPROVED	
GROUND SURFACES	32 MAX	DATE:		DRAWING TITLE:	
ANGLE TOLERANCE	± 1°	SCALE		MATERIAL:	
REMOVE BURRS & SHARP EDGES TO .015 MAX.		SHEET:		PART NUMBER	
DIMENSIONS SHOWN IN OVALS ARE INSPECTION DIMENSIONS.		1 OF 1		REVISION	
ENGLISH		SIZE 2, ZONE 2, BLACK POLY HANDLE		552PONxx	
0.X ±0.05					
0.XX ±0.01					
0.XXX ±0.005					