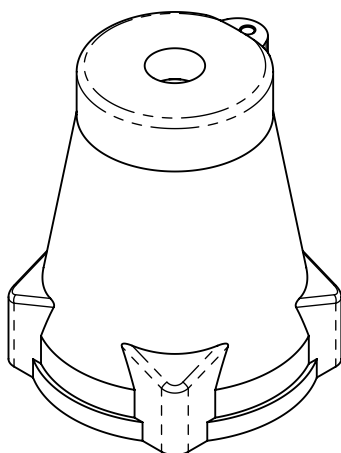
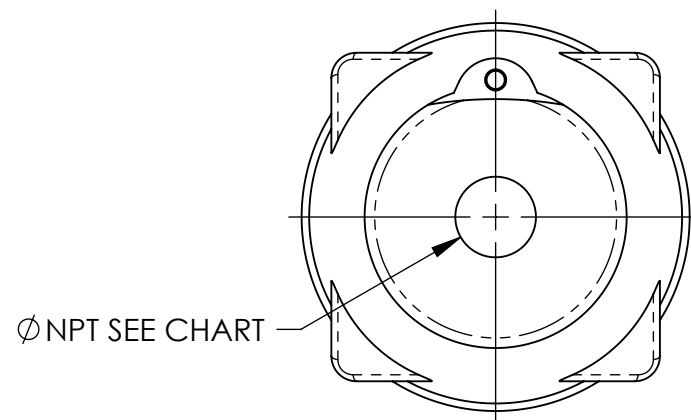
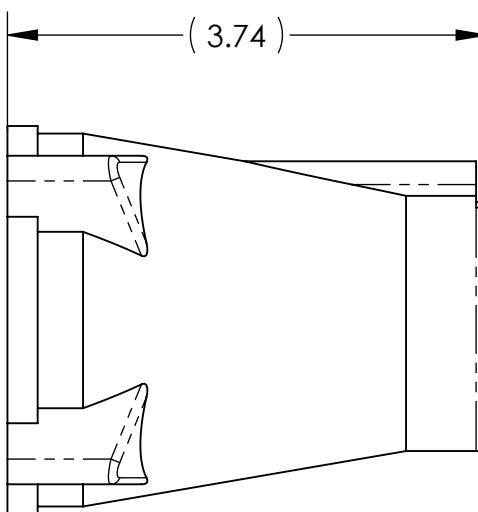
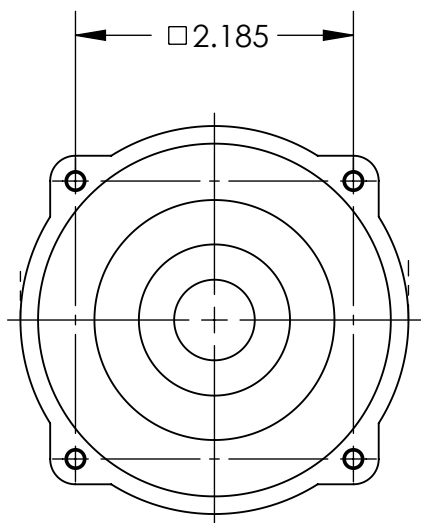


This drawing is the property of MELTRIC Corporation, Franklin (Milwaukee), Wisconsin, USA. Any unauthorized copying of this drawing by any means, ENG/RD/06 REV: 21 ISSUED DATE: 10/7/16 or disclosure of its contents to any person not authorized by MELTRIC Corporation or its agents to receive it, is strictly prohibited.



PART NUMBER	NPT HOLE SIZE
553PON05	1/2" NPT
553PON07	3/4" NPT
553PON10	1" NPT
553PON12	1 1/4" NPT

TOLERANCES UNLESS OTHERWISE SPECIFIED					
<div>MACHINED SURFACES $\sqrt[125]{\text{MAX}}$</div> <div>GROUND SURFACES $\sqrt[32]{\text{MAX}}$</div> <div>ANGLE TOLERANCE $\pm 1^\circ$</div> <div>REMOVE BURRS & SHARP EDGES TO .015 MAX.</div> <div><div></div>DIMENSIONS SHOWN IN OVALS ARE INSPECTION DIMENSIONS.</div>	ENGLISH	<div>MELTRIC</div> <div>A COMPANY OF MARECHAL ELECTRIC</div>			
		DRAWN	APPROVED	DRAWING TITLE:	
		DATE:		SIZE 3 BLACK POLY HANDLE	
		SCALE		MATERIAL:	
		SHEET: 1 OF 1		BLACK POLY	
		PART NUMBER		REVISION	
		553PONxx			