

# DSN37c/DS37c Multipin 8A

## Ratings

- **Voltage**  
480 VAC Max/480 VDC
- **Amperage Rating**  
8 A Non-Current Interrupting
- **Environmental Ratings**  
Type 4X/IP66/IP67/IP69/IP69K (Poly)  
Type 3R/IP54/IP55 (Stainless Steel)
- **Temperature Range**  
Min -40°F/Max 140°F  
See pg 254 for temperatures outside of this range.
- **Wiring Capacity**  
Based on THHN wire sizes.  
Min 18 AWG Max 14 AWG
- **Certifications**  
UL 2238, NOM

See pg 39-40 for DSN37c dimensions.

## Receptacle (female)



## Inlet (male)



**!** Don't forget to add installation accessories to your order

## North American Configurations

VOLTAGE	POLARITY	PART #		PART #	
		POLY	STAINLESS STEEL	POLY	STAINLESS STEEL
480 V	3P+G	63-C4003	37-C4003-SS	63-C8003	37-C8003-SS

For international configurations and ratings (IEC, CE) visit [meltric.com/international-catalog](http://meltric.com/international-catalog) or contact Customer Service at 800-433-7642.

## Main Options



**Padlock Pawl**



**Mushroom Pawl**

## RECEPTACLE OPTIONS

## SUFFIX #

Straight Insertion	Recept # -352 <sup>2</sup>
Mushroom Pawl	Recept # -375
Padlock Pawl	Recept # -843
Self-Returning Lid (Manual Close)	Recept # -NC

### Notes:

<sup>2</sup> This option includes the Self-Returning Lid.

Poly  
Devices  
Only

**!** See pages 231-240 for detailed information on these options

**Order Example: 480 V DSN37 + mushroom pawl**  
DSN37c 32P Poly receptacle = 63-C4003-375



Handle Option  
Guide  
pgs 237-238

# INSTALLATION ACCESSORIES – SIZE 3

When properly installed, all accessories meet or exceed the environmental ratings of the devices they are mounted to; unless otherwise noted.

## HANDLES

HANDLE WITH NPT	PART # POLY	PART # METAL
-----------------	-------------	--------------



1/2"	513P0N05	593P0N05
3/4"	513P0N07	593P0N07
1"	513P0N10	593P0N10
1 1/4"	513P0N12	593P0N12

For available cord grips, see pg 159.

POLY HANDLE WITH CORD GRIP	CABLE RANGE	PART #
----------------------------	-------------	--------



.520-.680"	713P0CP5
.680-.980"	713P0DP4
.980-1.260"	713P0EP4

METAL HANDLE WITH CORD GRIP	CABLE RANGE	PART #
-----------------------------	-------------	--------



.635-.750"	793P0CS4
.770-.850"	793P0DS1
.875-1.000"	793P0DS3
1.000-1.125"	793P0ES2

POLY HANDLE	CABLE RANGE	PART #
-------------	-------------	--------



.390-1.180"	513P0D30
-------------	----------

POLY HANDLE WITH BUILT IN DRAWPLATES	CABLE RANGE	PART #
--------------------------------------	-------------	--------



.390-1.180"	513P0D30473
-------------	-------------

Makes connector closures easier.

POLY HANDLE WITH CLAMP & BUSHING	CABLE RANGE	PART #
----------------------------------	-------------	--------



.750-.875"	713P0S14
.875-1.000"	713P0S16
1.000-1.125"	713P0S18
1.125-1.250"	713P0S20
1.250-1.375"	713P0S22

STAINLESS STEEL HANDLE WITH CORD GRIP	CABLE RANGE	PART #
---------------------------------------	-------------	--------



.625-.750"	7X3P0CS4
.750-.875"	7X3P0DS1
.875-1.000"	7X3P0DS3
1.000-1.125"	7X3P0ES2
1.125-1.250"	7X3P0ES3

For Stainless Steel devices only.

## ANGLES

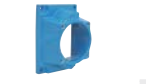
POLY ANGLE	ANGLE	PART #	ANGLE	PART #
------------	-------	--------	-------	--------



30°	513M3	70°	513M7
-----	-------	-----	-------

Panel mounting only.

METAL ANGLE	ANGLE	PART #	ANGLE	PART #
-------------	-------	--------	-------	--------



0°	593M0	30°	593M3
----	-------	-----	-------



FS/FD Box 30°	793M3FS
---------------	---------

Base measures approximately 4.2" x 2.7". Due to the variation in sizes of FS boxes, please verify that your FS box matches our dimensions, if not call Customer Service for other solutions.



70°	593M7
-----	-------

STAINLESS STEEL ANGLE	ANGLE	PART #
-----------------------	-------	--------



30°	7X3M3
-----	-------

For Stainless Steel devices only.

## BOXES

POLY CONDUIT ENTRY WITH NPT	ANGLE	SIZE	PART #
-----------------------------	-------	------	--------



30°	1/2"	513B3N05
30°	3/4"	513B3N07
30°	1"	513B3N10

For poly devices only.  
\* Interior volume with receptacle installed.

POLY WALL BOX WITH ANGLE	ANGLE	PART #
--------------------------	-------	--------



70°	513C7000
Ground Bar	51-AA089

\* 179.41 in<sup>3</sup>

70° poly boxes are not drilled.  
\* Interior volume with receptacle installed.

POLY ANGLE WITH METAL BOX WITH NPT	ANGLE	SIZE	PART #
------------------------------------	-------	------	--------



70°	1/2"	713C7N05
70°	3/4"	713C7N07
70°	1"	713C7N10
70°	1 1/4"	713C7N12
70°	1 1/2"	713C7N15

\* 74.6 in<sup>3</sup>

\* Interior volume with receptacle installed.

METAL BOX WITH NPT	ANGLE	SIZE	PART #
--------------------	-------	------	--------



0°	1/2"	7T1F0N05
0°	3/4"	7T1F0N07
0°	1"	7T1F0N10
0°	1 1/4"	7T1F0N12

POLY ANGLE WITH METAL BOX WITH NPT	ANGLE	SIZE	PART #
------------------------------------	-------	------	--------



30°	1/2"	713C3N05
30°	3/4"	713C3N07
30°	1"	713C3N10
30°	1 1/4"	713C3N12

\* 30.2 in<sup>3</sup>

For metal angle, replace "71" prefix with "79".  
\* Interior volume with receptacle installed.

STAINLESS STEEL BOX WITH NPT	ANGLE	SIZE	PART #
------------------------------	-------	------	--------



0°	1"	7X3P0N10
----	----	----------

For Stainless Steel devices only.

STAINLESS STEEL ANGLE WITH STAINLESS STEEL BOX WITH NPT	ANGLE	SIZE	PART #
---	-------	------	--------



30°	1"	7X3C3N10
-----	----	----------

For Stainless Steel devices only.

## MISCELLANEOUS ACCESSORIES

FINGER DRAWPLATES	PART #	DESCRIPTION
-------------------	--------	-------------



61-6A346	Set of Two (2) Recommended for cord to cord assembly applications, for easier connector closure.
----------	---

Poly Devices Only

PROTECTIVE INLET/PLUG CAP	PART #	DESCRIPTION
---------------------------	--------	-------------



61-6A426	For Inlets/Plugs Only.
----------	------------------------

PADLOCKABLE INLET/PLUG CAP	PART #	DESCRIPTION
----------------------------	--------	-------------



61-6A826	For Inlets/Plugs Only.
----------	------------------------

MULTI-CONTACT REMOVAL TOOL	PART #
----------------------------	--------



61-CA593
----------

CRIMPER TOOL (GREENLEE OR EQUAL)	PART #
----------------------------------	--------



4CN30
-------

EUROPEAN CRIMPING TOOL	PART #
------------------------	--------



61-CA500
----------

RECEPTACLE LOCKING PIN	PART #	DESCRIPTION
------------------------	--------	-------------



LP-843	Requires Padlockable Pawl option (-843) on receptacle.
--------	--