



## SPECIFICATION SUBMITTAL

**X - SEE TABLE**

## REPAIR TRAP LESS CLEANOUT

JOB: \_\_\_\_\_  
 CONTRACTOR: \_\_\_\_\_  
 ARCHITECT/ENGINEER: \_\_\_\_\_

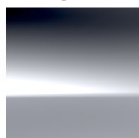
DATE: \_\_\_\_\_  
 QTY: \_\_\_\_\_  
 PO#: \_\_\_\_\_  
 TAG: \_\_\_\_\_

### SPECIFICATION

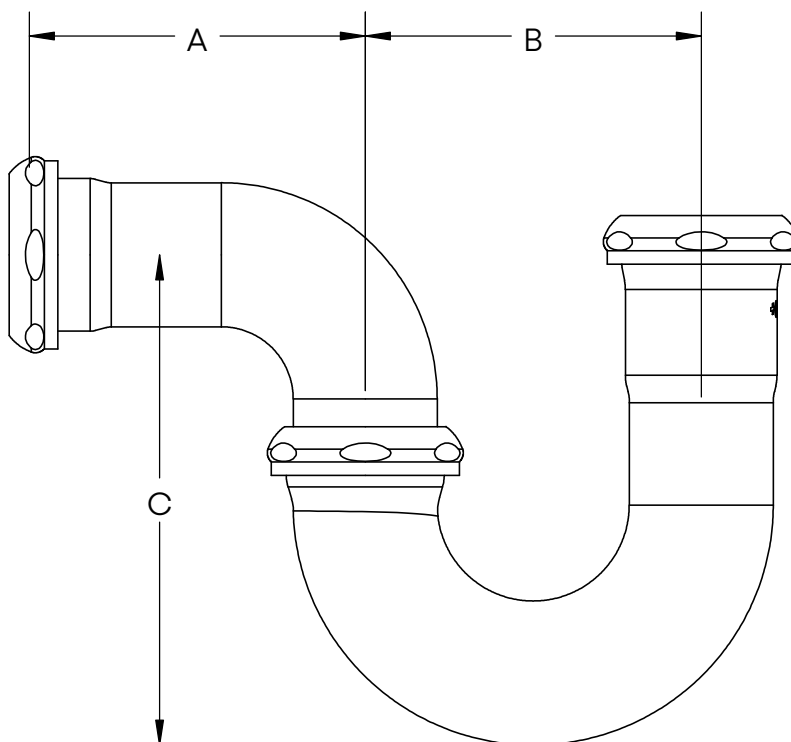
Repair trap less cleanout,  
 20GA tubular brass, with  
 washer joint connection.  
 3.5" wall bend.

### FINISHES AVAILABLE

CP



CHROME  
PLATED



<b>X</b>	<b>JOINT</b>	<b>FINISH</b>	<b>FLANGE</b>	<b>GAUGE</b>	<b>TUBE</b>	<b>A</b>	<b>B</b>	<b>C</b>
10R	WASHER	CP	NONE	20	1-1/4"	3-5/8" [94mm]	3-1/4" [81mm]	4-1/2" [113mm]
14R					1-1/2"	3-1/2" [89mm]	3-1/2" [89mm]	5-1/8" [130mm]

**Oakville Stamping and Bending Ltd.**

T. 905.827.0320 or toll free 1.877.314.6040 F. 905.827.6375 or toll free 1.877.827.6040

All rights reserved. +osb™ reserves the right to change product specifications and material or discontinue models without notice.

**www.osb.ca (Canada) www.osbplumbing.com (USA)**

**November 11, 2025**

