



SPECIFICATION SUBMITTAL

X - SEE TABLE

TUBULAR S-TRAP LESS CLEANOUT

JOB: _____
 CONTRACTOR: _____
 ARCHITECT/ENGINEER: _____

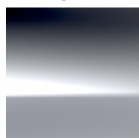
DATE: _____
 QTY: _____
 PO#: _____
 TAG: _____

SPECIFICATION

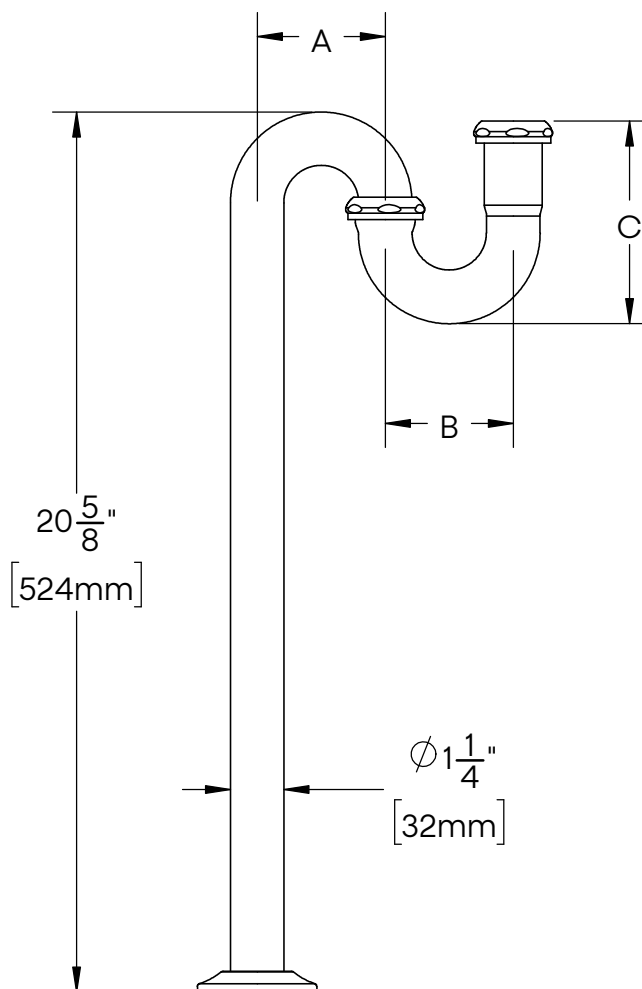
1-1/4" S-trap less cleanout.
 Comes with shallow flange.
 Washer joint connection.

FINISHES AVAILABLE

CP



CHROME
PLATED



X	JOINT	NUTS	FLANGE	GAUGE	A	B	C
28-1	WASHER	DIE-CAST	SHALLOW	22	3" [76mm]	3" [76mm]	4-3/4" [121mm]
28-CP		BRASS		20			

Oakville Stamping and Bending Ltd.

T. 905.827.0320 or toll free 1.877.314.6040 F. 905.827.6375 or toll free 1.877.827.6040

All rights reserved. +osb™ reserves the right to change product specifications and material or discontinue models without notice.

www.osb.ca (Canada) www.osbplumbing.com (USA)

11/17/25

