



SPECIFICATION SUBMITTAL

X - SEE TABLE

1-1/2" PLASTIC P-TRAP

JOB:
CONTRACTOR:
ARCHITECT/ENGINEER:

DATE:
QTY:
PO#:
TAG:

SPECIFICATION

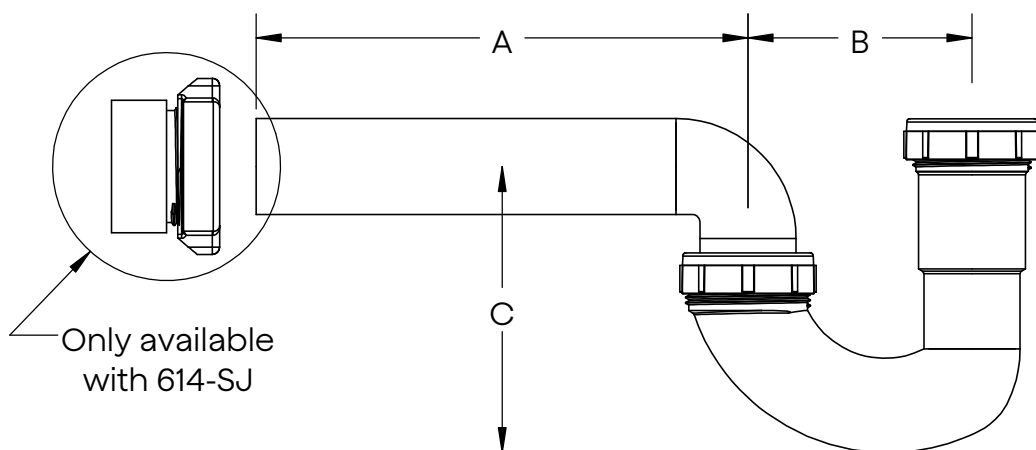
1-1/2" Schedule 20 polypropylene
P-trap with 7-3/4" wall bend.
Available with slip joint wall bend
connection.



CERTIFICATION



ASME A112.18.2/CSA-B125.2
The "cCSAus" Meets UPC & IPC
Code" mark means the product
conforms to the requirements of
the NPC, UPC, IPC, and IRC.



<u>X</u>	JOINT	FLANGE	GAUGE	TUBE	A	B	C
614	GROUND	NONE	20	1-1/2"	7-11/16" [195mm]	3-1/2" [89mm]	4-1/2" [114mm]
614-SJ							

Oakville Stamping and Bending Ltd.

T. 905.827.0320 or toll free 1.877.314.6040 F. 905.827.6375 or toll free 1.877.827.6040

All rights reserved. +osb™ reserves the right to change product specifications and material or discontinue models without notice.

www.osb.ca (Canada) www.osbplumbing.com (USA)

11/17/25

