

LED Flush Mount

FM16520-3WCCT-UNV

INSTALLATION SHEET

START FROM HERE

- Make sure **POWER** is **COMPLETELY OFF** at the fuse box
- Have your fixture installed by a qualified licensed electrician
- Prepare everything in a clear area
- Wear gloves at all time during this installation
- Read instructions carefully before you start assembly
- Keep this installation sheet for future reference

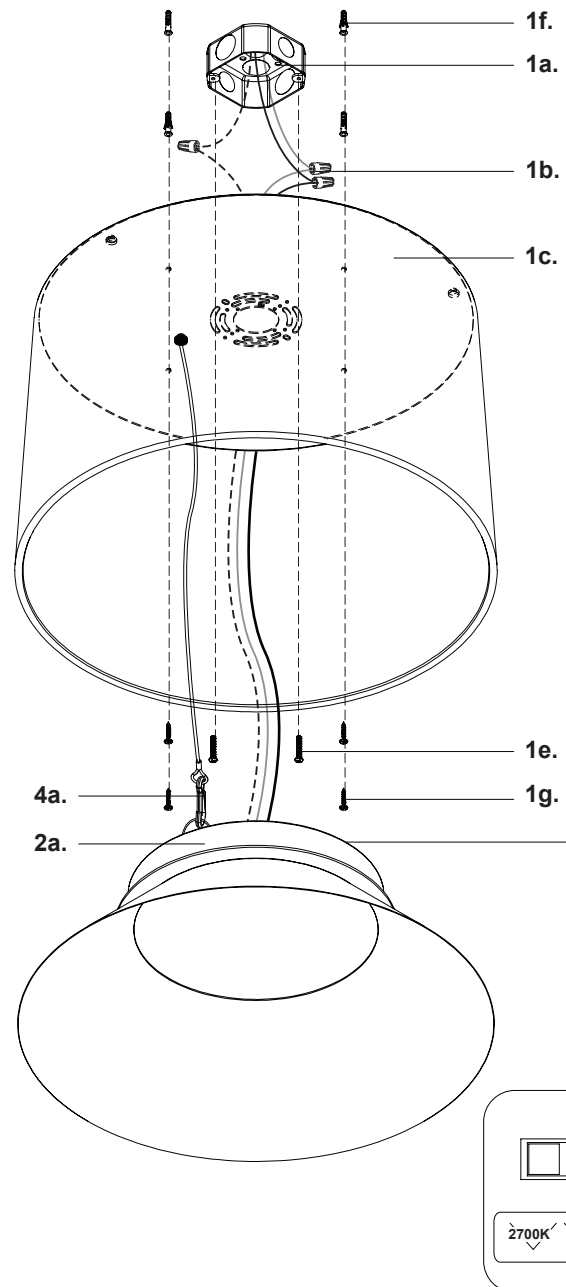
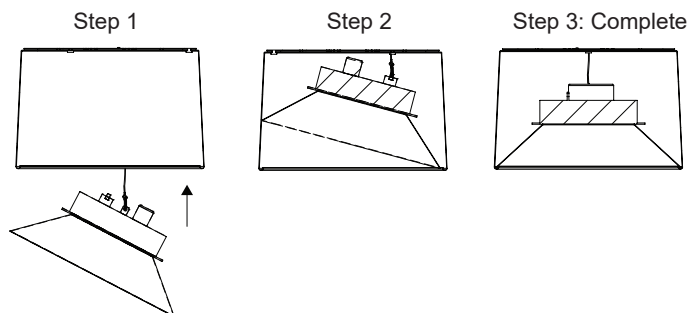
Technical Support: 1-855-855-8926

Please Note:

- This Kuzco LED fixture comes with pre-wired LED module(s)
- Unless instructed, Do Not touch any part of the LED module(s) as any unnecessary contact with the module could cause permanent damage
- For dimming, an ELV (Electronic Low Voltage) or TRIAC type of dimmer is required
- 120-277V input

1. Remove fixture from its original package
2. Attach shade (1c) to electrical junction box (1a) using junction box screws provided (1e) in hardware package
3. Secure shade (1c) to mounting surface with anchors (1f) and screws (1g)
4. Attach safety clip (4a) to lamp assembly (2a)
5. Make proper electrical connections (black to hot "L", white to neutral "N", ground to "GND") with wire nuts (1b) provided in hardware package
6. Choose color temperature by using slider (5a)
7. Place lamp assembly (2a) inside shade (1c) at an angle (See Illustration 1: Step 1) and let lamp assembly (2a) rest in shade (1c) (See Illustration 1: Step 2)

Illustration 1



KUZCO

19054 28th Avenue Surrey, BC Canada V3Z 6M3
T: 604 538 7162 TF: 1-855 85 KUZCO F: 604 538 7196
W: kuzcolighting.com
20240911