

# LED Linear Pendant

## LP95354-UNV

INSTALLATION SHEET

### START FROM HERE

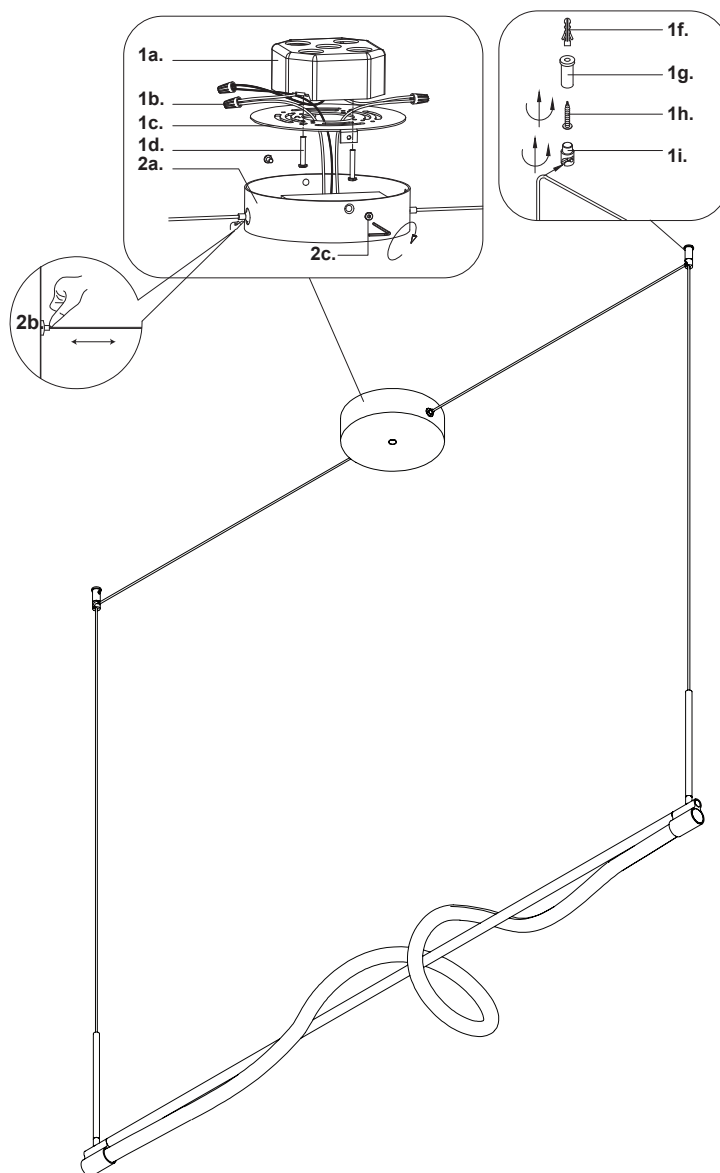
- Make sure power is completely off at the fuse box.
- Have your fixture installed by a qualified licensed electrician
- Prepare everything in a clear area.
- Wear gloves at all times during this installation.
- Read instructions carefully before you start assembly.
- Keep this instruction sheet for future reference.

### Please Note:

- This Kuzco LED fixture comes with pre-wired LED module(s).
- Unless instructed to do so, please do not touch any part of the LED module(s) as any unnecessary contact with the module could cause permanent damage.
- For dimming, an ELV (Electronic Low Voltage) or TRIAC type of dimmer is required.
- 120-277V input

**Technical Support:** 1-855-855-8926

1. Remove fixture from its original package
2. Remove mounting plate (1c) from canopy (2a) by removing canopy screws (2c)
3. Attach mounting plate (1c) to electrical junction box (1a) using screws provided (1d) in hardware package
4. Make proper electrical connections (black to hot "L", white to neutral "N", ground to "GND") with wire nuts (1b) provided in hardware package
5. Attach canopy (2a) to mounting plate (1c) with canopy screws (2c)
6. Mark and install ceiling anchors (1g) with screw (1h) and anchor (1f). Ideal distance between ceiling anchors (1g) is 52-1/4". Close with wire gripper (1i).
7. Fine tune wire length if necessary, by push and hold wire gripper (2b) and then adjust wire to desired length



# KUZCO

19054 28th Avenue Surrey, BC Canada V3Z 6M3  
T: 604 538 7162 TF: 1-855 85 KUZCO F: 604 538 7196  
W: kuzcolighting.com  
20220708

# LED Linear Pendant

# LP95354-UNV

INSTALLATION SHEET

## START FROM HERE

- Make sure power is completely off at the fuse box.
- Have your fixture installed by a qualified licensed electrician
- Prepare everything in a clear area.
- Wear gloves at all times during this installation.
- Read instructions carefully before you start assembly.
- Keep this instruction sheet for future reference.

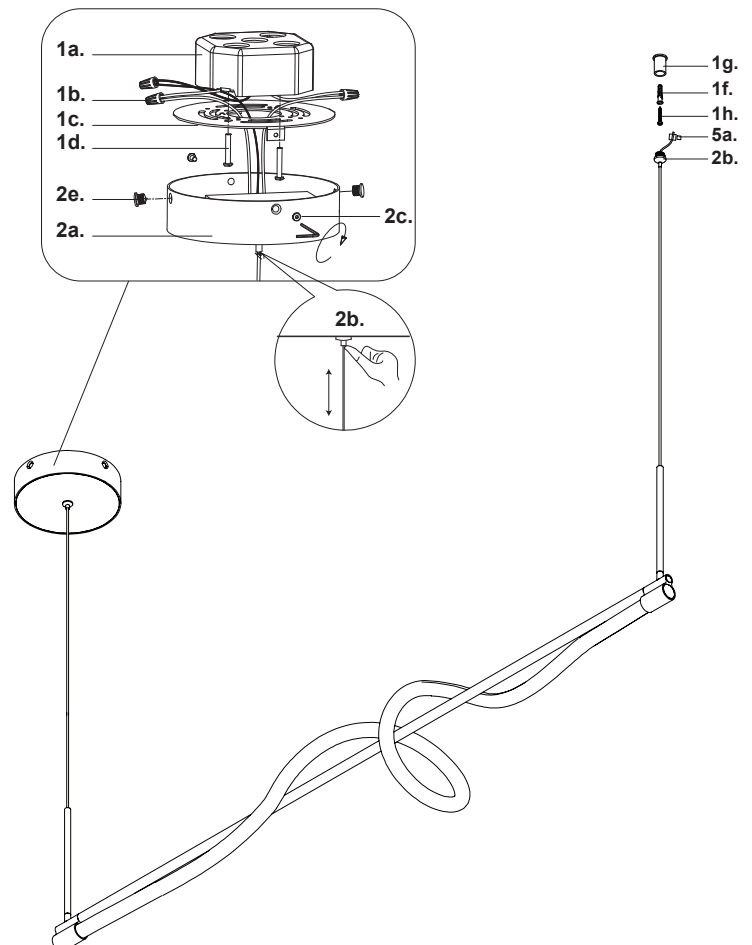
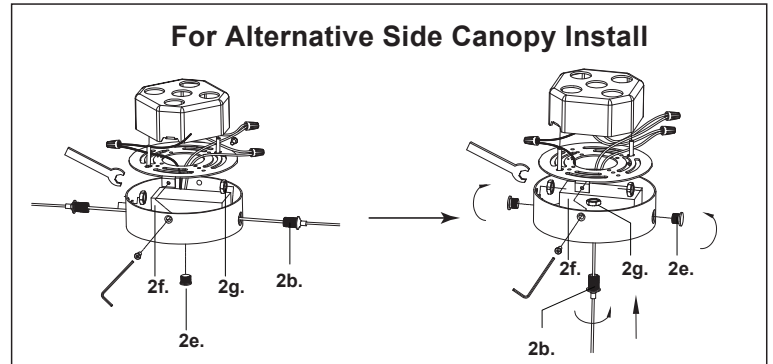
**Technical Support:** 1-855-855-8926

## Please Note:

- This Kuzco LED fixture comes with pre-wired LED module(s).
- Unless instructed to do so, please do not touch any part of the LED module(s) as any unnecessary contact with the module could cause permanent damage.
- For dimming, an ELV (Electronic Low Voltage) or TRIAC type of dimmer is required.
- 120-277V input

## For alternative side canopy install

- 1.** Disconnect output wires on driver (2f)
- 2.** Move wire gripper (2b) to bottom of the canopy, secure with nut (2g), and close holes on side of canopy with plugs (2e)
- 3.** Reconnect driver positive wire to center core of hanging cable, and negative to meshed conductor
- 4.** Attach canopy (2a) to mounting plate (1c) with canopy screws (2c). Position desired amount of wire by pushing gripper (2b) on canopy
- 5.** Add plastic anchors (1f) to the ceiling and wood backing and secure aircraft cable barrels (1g) to it with screws (1h) and secure wire with screw (5a) and close with wire gripper (2b)
- 6.** Fine tune wire length if necessary, by push and hold wire gripper (2b) and then adjust wire to desired length



# KUZCO

19054 28th Avenue Surrey, BC Canada V3Z 6M3  
T: 604 538 7162 TF: 1-855 85 KUZCO F: 604 538 7196  
W: kuzcolighting.com  
20220708