



ENWORK

# Jet Collection

Meet the Jet Collection: the ultimate solution for the modern open plan office. Jet offers a complete suite of essentials, from power beams and height-adjustable desks to convenient storage options.

[enwork.com](http://enwork.com)

## Beam Details

- Beam sections available in 48", 54", 60", and 72" widths. Other widths available upon request.
- One leg per pack includes routing holes for infeed and Ethernet cables from the floor to the beam; all feet feature a center hole to pass cords directly into the column, ideal when placing a leg over a floor core. A maximum of 24 Cat5 cables (UTP Solid 24AWG/4PRS) fit within a beam.
- Standard in 2-pack to 14-pack configurations.
- Not all beam sections require a T-leg support.
- Each beam section has two windows for duplex receptacles (ordered separately), and one window for data (data tree included) per user. For single-sided power, this is on one side.
- Available in all Enwork standard paint colors (including Designer Paints).

---

## Design Details



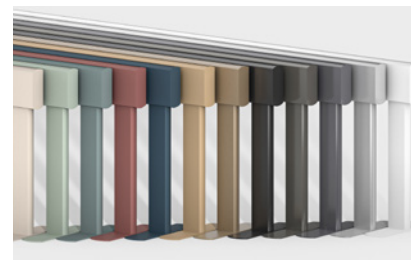
Curvilinear Foot Design



Integrated Cable Management

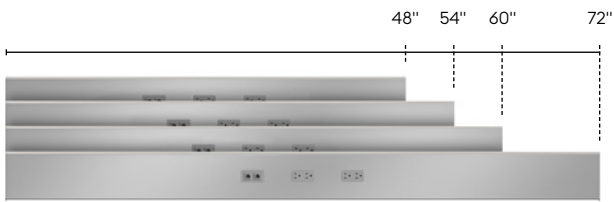


End Cap Design



12 Stunning Paint Colors

## Beam Widths



## Beam Heights



Available in 24" and 29"H. Other heights are available upon request.

## End Panels

- End panels are 1/4" thick, double-sided laminate, and attached directly to the end of the beam.
- End panels are 29"H, 37"H, or 42"H to match beam and beam topper applications.
- End panels available in Single and Double-Sided configurations.



Single-Sided



Double-Sided

## Optional Aluminum Trim

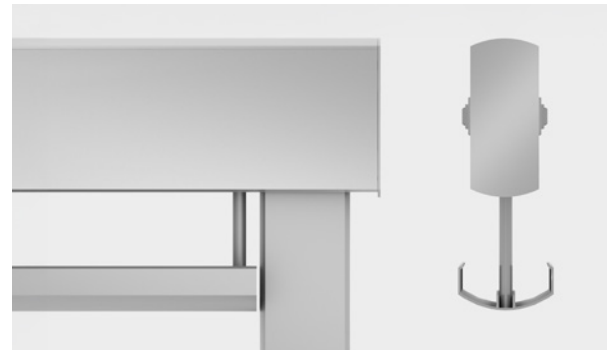


Aluminum trim is 24"H on 29"H panels, 29"H on 37"H panels, and 29"H on 42"H panels.

## Hanging Cable Troughs

- Hanging cable troughs are used to support cables hanging from plugs, additional power strips, and additional cables beyond what is within the beam, or if exterior cable routing is preferred.

## Curvilinear Form



Sizes available for 48", 54", 60", and 72"W beam sections.

## Accessory Details

- Jet accessories include casters, cross bar kits, hinging troughs, Supreme Desktop Power Modules, 6-outlet 15 amp plug strips, and wire managers.

## Beam Leg Placement

Leg support quantities vary by pack size. See the breakdown below for specific configurations.



2-Pack



4-Pack



6-Pack



8-Pack



10-Pack



12-Pack



14-Pack

## Beam Topper Details

- Topper screens available in 1/4" thick frosted acrylic, 1/4" thick glass (clear and frosted), and 1/4" thick non-tackable fabric panels.
- Acrylic and glass topper screen width is undersized by 3/4" per side on each beam section. Fabric topper screen width is undersized by 1/8" per side on each beam section.
- Screens extend 13" above top of beam. A 29"H beam is 42"H overall including topper screens. A 24"H beam is 34"H including topper screens.

### Materials



Frosted Acrylic



Glass (Clear or Frosted)



Non-Tackable Fabric Panels

### Three Unique Topper Shapes



Rectangle



Curvilinear (Acrylic and Glass Topper Screens Only)



Curvilinear Ends Only (Acrylic and Glass Topper Screens Only)



## Storage Details

- Jet Storage has two grades of laminate pricing. Enwork standard solid laminates are lowest price. Patterned laminates have an upcharge.
- Mobile Pedestals are laminate, with no lock. Locking mobile pedestals are available in the Affinity Collection.
- Combo Storage and Lockers are laminate, with optional locks.
- Available with Arc or Sleek pulls.
- Combo Storage with levelers is 22"H. Caster and feet versions are 24"H.
- Combo Storage feet paint matches pull. Feet are 3-1/4" high including leveler.
- Drawer boxes are maple and file drawers include track for pendaflex files.
- Cushions are 1.875" tall overall, including 1.5" of foam.
- Cushions adhere to top of storage with dual lock velcro.
- Storage top laminate is specified separately from case for more design options.

### Mobile Pedestals



Box / File Mobile Pedestal  
20"D x 16"W x 20.5"H



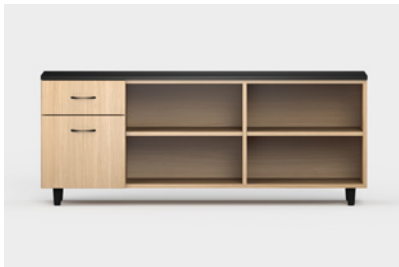
Cubby / File Mobile Pedestal  
20"D x 16"W x 20"H

### Lockers

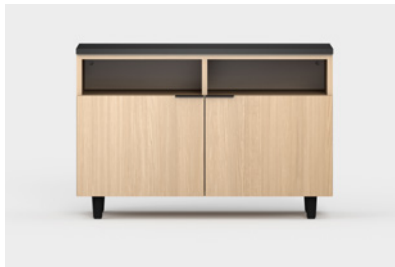


Single Door Locker with Adjustable Shelf  
(Right and Left Hand optional)  
20"D x 16"W x 20"H

### Combo Storage



Ped / Bookcase (Right/Left Hand optional)  
18"D, 30" – 60"W



Cubby / Double Door  
18"D, 30" – 42"W



Fabric Cushions for Pedestals, Lockers,  
and Combo Storage



Optional Casters, Feet, or Levelers  
(Combo Storage only)

## Standard Height-Adjustable Electric Base & Top Details

- Bases come in two height adjustment ranges: Standard Range (27.5" – 46.7" w/ top) and ANSI/BIFMA range (23.88" – 49.75" w/ top).
- Standard bases are C-Leg configurations with Jet design detailing on the feet and worksurface support bracket to align with Jet beam and top design aesthetics. Value bases are T-Leg configurations with value rectangle feet and angled cantilevered brackets.
- Bases include quick-connect assembly features and adjustable cross bars for 48" – 72" wide tops. Longer crossbars available to order separately for wider tops.
- Standard bases have 240lbs load capacity (including worksurface). 90- and 120-degree bases have 315lbs load capacity (including worksurface).
- Actual top depth and width is 1-1/8" less than nominal to eliminate pinch points when used with height-adjustable bases.
- Jet Value LPL Tops (also known as TFL) are 3/4" thick.
- Tops have 3mm edges.
- Bases include patented gyroscopic anti-collision for increased collision sensitivity.

### Standard Base



C-Leg



Jet-Shaped Curvilinear Foot

### Value Base



T-Leg



Value Rectangular Foot

### Paint Colors

Bases available in all Enwork standard paint colors (including Designer Paints).



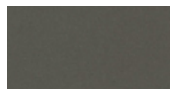
Arctic White



Silver



Storm



Medium Tone



Black



Champagne  
Bronze



Beige



Jade



Evergreen



Burgundy



Blue

## Base Details



Standard Range  
(1-stage, 26.125" - 46.125" with top)



ANSI/BIFMA Range  
(2-stage, 22.64" - 49.41" with top)



Up/Down Handset Standard,  
Programmable Optional



90-Degree Base



120-Degree Base

---

## Top Shapes

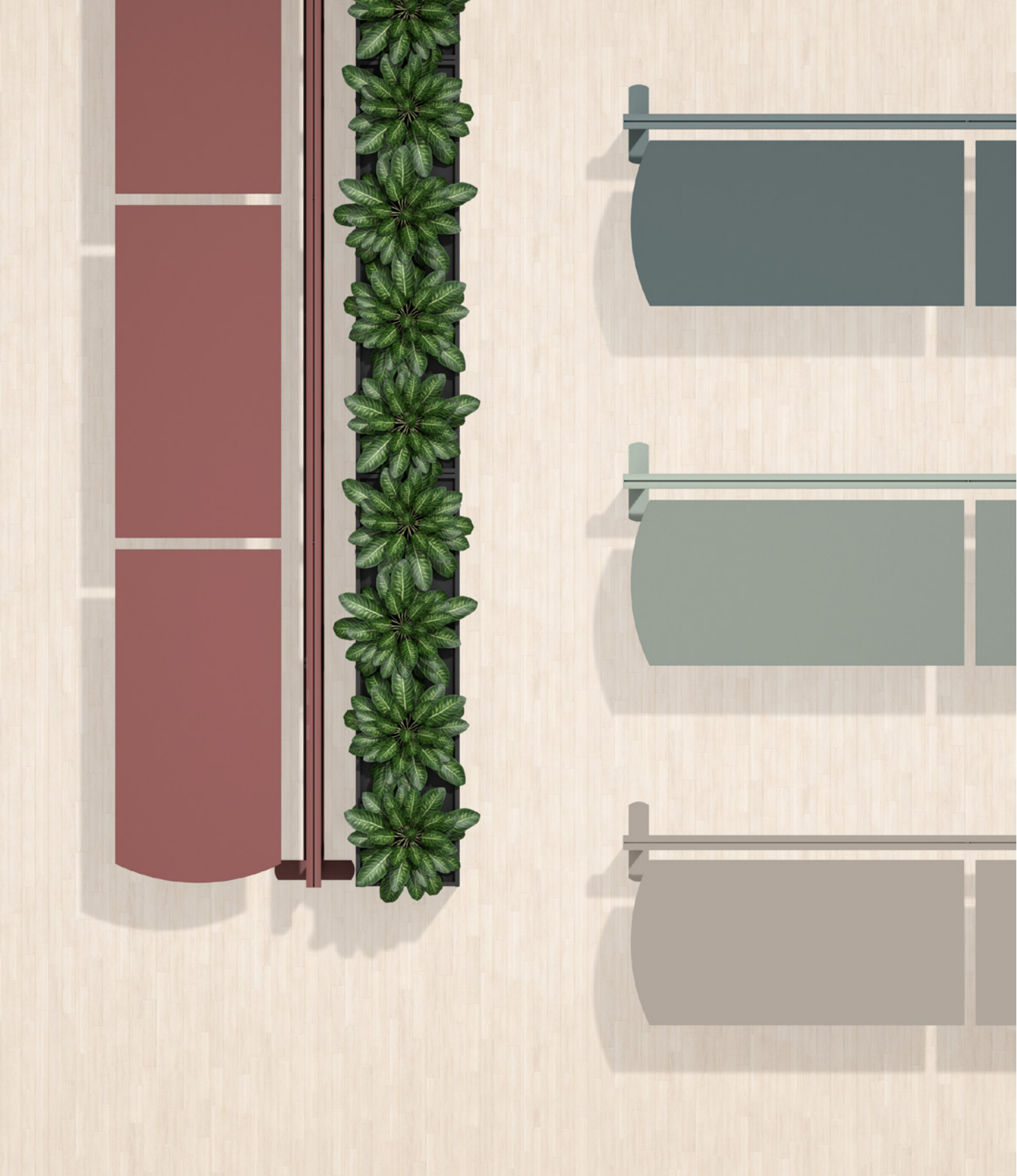
Depth: 24", 30"  
Width: 48", 54", 60", 72"

Rectangle Top

Curvilinear Top  
(Matches Foot Design)

Curvilinear Left

Curvilinear Right



Specifications are subject to  
change without prior notice.

Revised 04.26  
[enwork.com](http://enwork.com)