



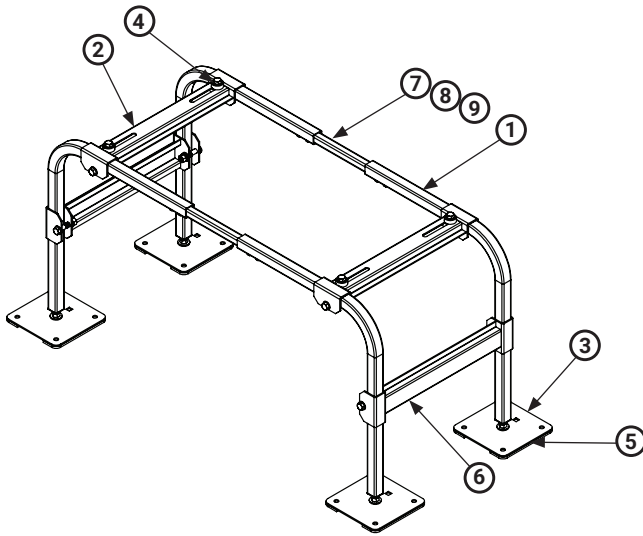
QSMS1200



QSMS1800



QSMS2400

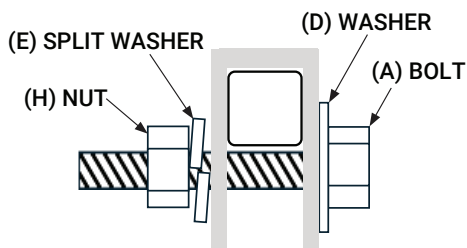


Parts List

ITEM NO.	PART NO.	DESCRIPTION	QSMS	QSMS	QSMS
			1200	1800	2400
1	MS107	12" J-Bar	4	0	0
	MS110	18" J-Bar	0	4	0
	MS116	24" J-Bar	0	0	4
2	MS119	Mini-Split Long Mounting Bracket	2	2	2
3	MS105	Mini-Split Foot, 6" x 6"	2	2	2
4	HDKMS02	Hardware Kit	1	0	0
	HDKMS05	Hardware Kit	0	1	1
5	QSR042	Mini-Split Rubber Foot, 6" x 1.5"	8	8	8
6	MS114	Steel Stability Brace	0	2	2
7	MS106	Mini-Split Extension Bar	2	2	2
8	QSR008	1/4-20x0.5" Bolt, ZN PL	8	8	8
9	QSR015	1/4" Bonded Washer	8	8	8

Hardware Kit

ITEM #	DESCRIPTION	REF.	IMAGE	HD	HD
				KMS02	KMS05
QSR017	3/8"-16 x 2.25" Hex Bolt, GALV	A		8	12
QSR021	3/8"-16 x 2" Carriage Bolt, ZN PL	B		4	4
QSR035	3/8" Bonded Washer	C		4	4
QSR037	3/8" Washer, GALV	D		8	12
QSR034	3/8" Split Washer, GALV	E		8	12
QSR026	3/8" Hex Nut, ZN PL	F		16	20
QSR058	3/8" x 1" Vibration Isolator	G		4	4
QSR025	3/8" Hex Nut, GALV	H		8	8



Typical Hardware Arrangement (GALV)

Tools required: 7/16", 9/16" wrench

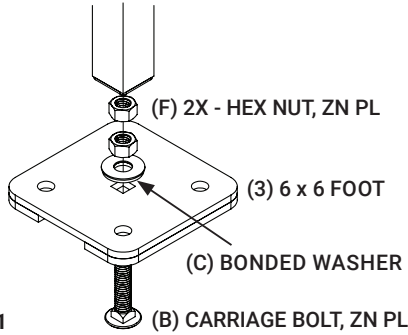


Fig. 1

1. Remove the foot plates (3) from the box and insert the carriage bolt (B) through the rubber side of foot as shown in Figure 1. Then secure the bonded washer (C) and two stainless steel nuts (F) per foot.

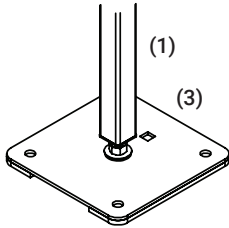


Fig. 2

2. Insert the feet with bolts attached into the adapters at the bottom of the legs (1), as shown in Figure 2. Use the nuts to adjust the height.

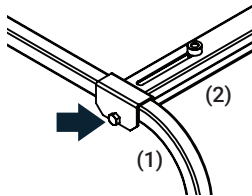


Fig. 3

3. Attach item (2) Mounting Brackets to item (1) U-Hoops using hardware in places based on typical hardware arrangement at the location shown in figure 3. Adjust the mounting rail locations to match the bolt spacing of the equipment.

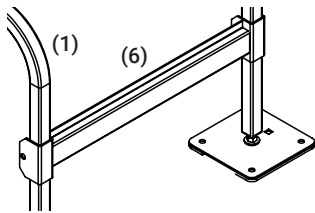


Fig. 4

4. If using QSMS1800 or QSMS2400, attach Stability Brace (6) to the midpoint of the leg as shown in Figure 4 based on typical hardware arrangement. For QSMS1200, skip this step.

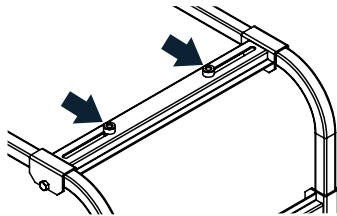


Fig. 5

5. Place the unit on top of the rails as shown in Figure 5, lining up the mounting slots.

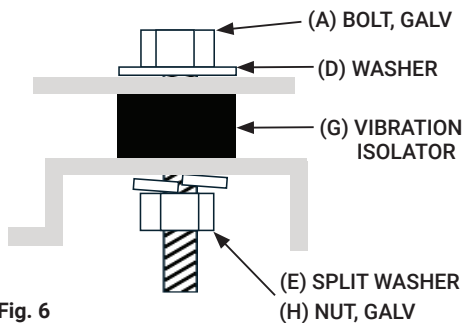


Fig. 6

6. Secure the unit with provided hardware (4), bolt, washer, rubber vibration isolator, mounting rail, lock washer, and nut, as shown in Figure 6. Make sure all bolts are tightened to finish installation.