

PRODUCT NUMBER  
10072354-X01-XXXLF

- RoHS COMPATIBLE, SEE NOTE 6
- PACKAGING, SEE NOTE 5  
(MAY BE SUBJECT TO TOOLING FEES)
- TOTAL NB OF POSITIONS, 04 TO 50
- COLOR OPTION, SEE NOTE 1  
(AS AVAILABLE)

PLATING  
(AS AVAILABLE)

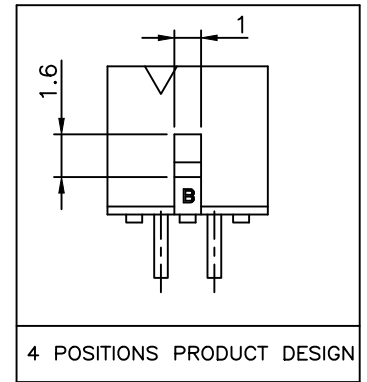
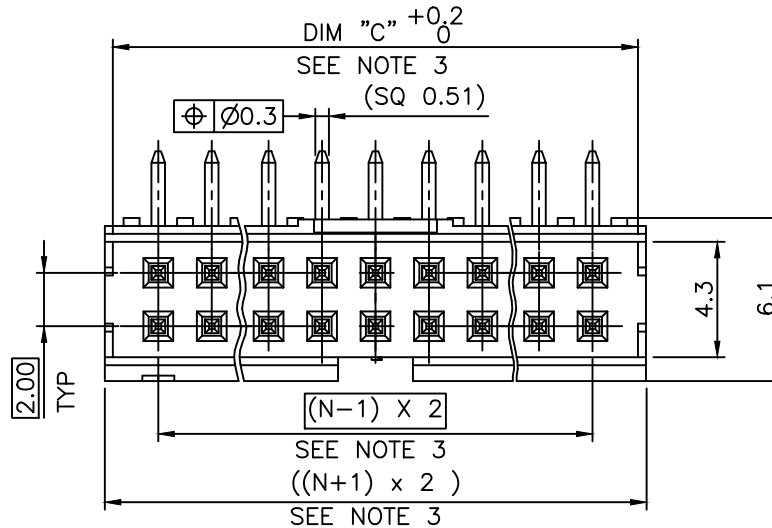
- S = 0.38µm GOLD/GXT ON CONTACT AREA  
2µm MIN MATTE TIN ON TAIL
- G = 0.76µm GOLD/GXT ON CONTACT AREA  
2µm MIN MATTE TIN ON TAIL
- F = GOLD FLASH ON CONTACT AREA  
2µm MIN MATTE TIN ON TAIL
- 1.27µm MIN NICKEL UNDERPLATING

NOTES:

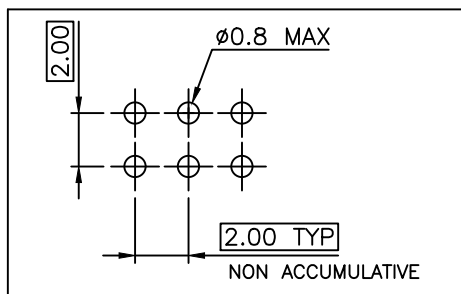
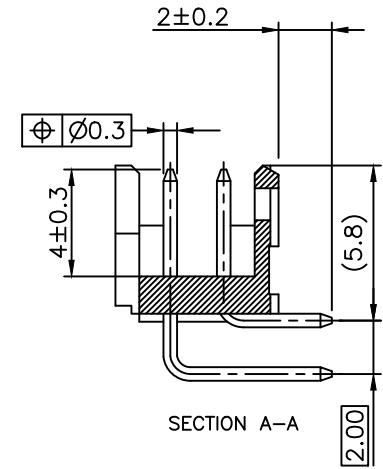
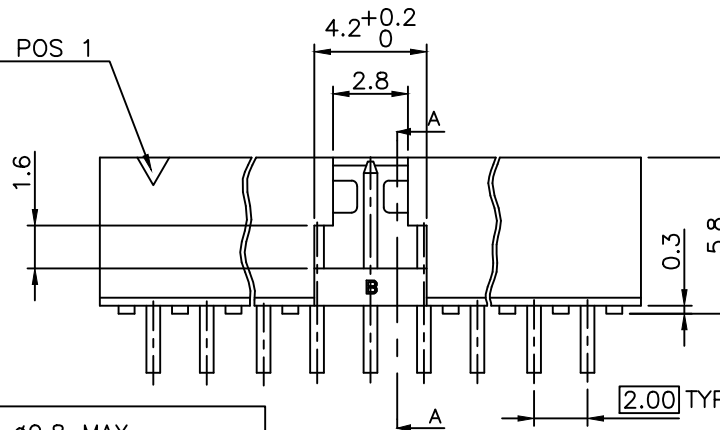
1. MATERIAL HOUSING: HIGH TEMP. THERMOPLASTIC UL94V-0  
MEETS GWT 850°C 960°C  
- = STANDARD COLOR CREAM  
B = OPTIONAL COLOR BLACK
2. MATERIAL TERMINAL: COPPER ALLOY
3. TO DETERMINE DIMENSIONS:  
N = NUMBER OF POSITIONS PER ROW
4. 7N MIN. PIN RETENTION IN EITHER DIRECTION.
5. PACKAGING:  
= PLASTIC BOX  
U = TUBE AVAILABLE FROM 06 TO 50 POS  
K = TAPE & REEL WITHOUT PICK UP CAP, AS AVAILABLE
6. RoHS COMPATIBLE PRODUCT SPECIFICATIONS
  - a - PLATING:  
- "LF" MEANS THE PRODUCT IS LEAD-FREE,  
2µm MINIMUM MATTE TIN OVER 1.27µm  
MINIMUM NICKEL UNDERPLATE.
  - b - MANUFACTURING PROCESS COMPATIBILITY  
- THE HOUSING WITHSTAND EXPOSURE TO  
260°C PEAK TEMPERATURE FOR  
30 SECONDS MAX IN A CONVECTION, INRA-RED  
OR VAPOR PHASE OR REFLOW OVEN.
  - c - LABELLING:  
- MEETS PACKAGING SPECS AS PER GS-14-920
  - d - THIS PRODUCT MEETS EUROPEAN DIRECTIVES  
AND OTHER COUNTRY REGULATIONS AS DISCRIBED  
IN GS-47-0004
7. THIS PART SERIES IS NOT INITIALLY INTENDED FOR  
AUTOMOTIVE APPLICATIONS. ADDITIONAL FEES ARE  
CHARGEABLE FOR ANY ADDITIONAL QUALIFICATION AND  
TEST REPORTS PERFORMED OUTSIDE THE SCOPE OF THE  
STANDARD PRODUCT SPECIFICATIONS.
8. UNLESS OTHERWISE APPROVED BY AMPHENOL, ALL PARTS  
AND COMPONENTS ARE DESIGNED & BUILT ACCORDING TO  
AMPHENOL'S SPECIFICATIONS WHICH ARE SUBJECT TO  
CHANGE WITHOUT NOTICE.

EXTENDED RANGE

- TOOLING FEASIBILITY CONFIRMED
- SAMPLES ON DEMAND
- AVAILABILITY ON DEMAND



- INDICATES POS 1
- 4.2<sup>+0.2</sup>/<sub>0</sub>
- 2.8
- 1.6
- 5.8
- 0.3
- 2.00 TYP



RECOMMENDED 1.6mm THICK PCB LAYOUT  
STENCIL DESIGN RECOMMENDATIONS  
AS PER TA-895

mat'l. code		surface		tolerance		projection		product family	
SEE NOTES		ISO 1302		ISO 406 ISO 1101		mm		MINITEK	
Ltr	ecn no	dr	date	tolerances unless otherwise specified		mm		title	
H	B-19190	LMU	14.10.24	angles	linear	x.x ±0.3		SHR HEADER	
J	B-20110	BVE	15.01.28			x.xx ±0.13		2.00 RIGHT ANGLE PIP	
K	B-20254	LMU	15.02.16			x.xxx ±0.05		scale 5:1	
L	B-20611	AMA	15.03.31	dr	L.MULIN	06.09.14		dwg no	
M	F-23051	AMA	16.01.15	engr	J.COMPAGNON	06.09.14		sheet 1 of 1	
N	F-45699	LMU	22.08.22	chr				size	
P	F-54463	DDE	25.01.31	appd	J.COMPAGNON	06.09.14		10072354	
sheet	revision								
index	sheet								



Amphenol  
FCI  
FCIconnect.com

Copyright FCI