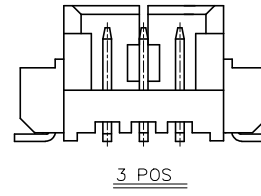
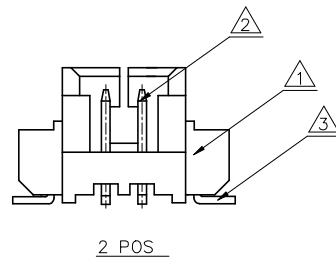
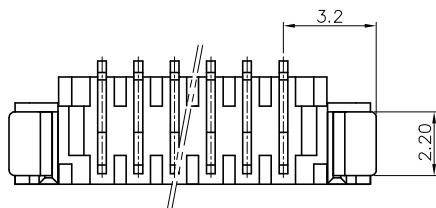
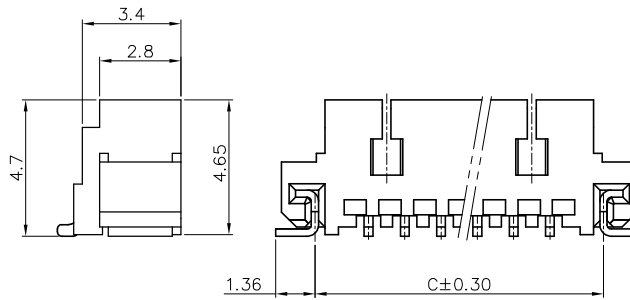
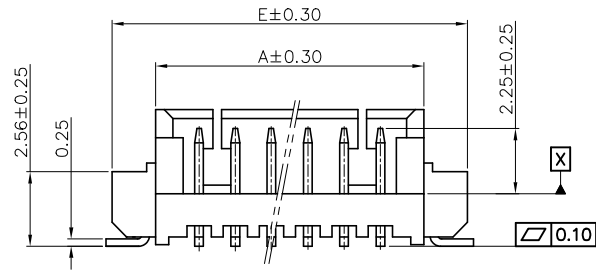


P.C.BOARD LAYOUT
PCB TOLERANCES: ±0.05



NOTES

1. SPECIFICATIONS

Current Rating: 1A AC,DC
Voltage Rating: 125V AC,DC
Temperature Range: -40°C ~ +105°C
Contact Resistance: 20mΩ Max.
Insulation Resistance: 100MΩ Min.
Withstanding Voltage: 500V AC/minute

2. Material & finish:

Housing: Thermoplastic, UL94V-0
Contact and metal hold-down: Phosphor Bronze
Plating of contact area: Matte Tin or gold plating over Nickel
Plating of solder area: Tin plated over Nickel
Plating of hold-down: Matte Tin over Nickel

3. Crimping application hand tool P/N: 10118656-1000

4. Mate with receptacle: AFCI 10114826

5. Ordering Information & Dimensions:

10114828- X X X XX X LF

Material
1: Natural LCP
2: Black LCP

VOID: NORMAL
1: SEE SHEET 2 (VOID 2&4 PIN)
Pin counts from 02~15

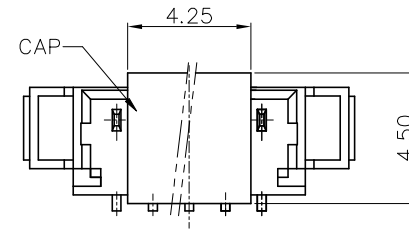
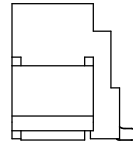
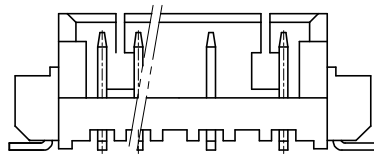
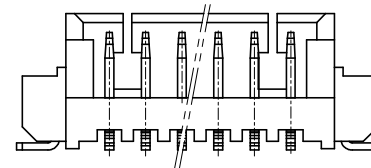
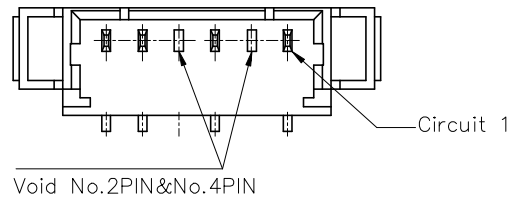
Plating
0: 120u" Matte Tin
1: Gold Flash
3: Gold 30u"

Packaging
1: Tape & Reel
2: Tape & Reel+ Cap(sheet 2)

Part No.	Dimensions					
	POS	A	B	C	D	E
10114828-xxx02LF	2	4.25	1.25±0.10	4.94	3.05	7.25
10114828-xxx03LF	3	5.50	2.50±0.10	6.19	4.30	8.50
10114828-xxx04LF	4	6.75	3.75±0.10	7.44	5.55	9.75
10114828-xxx05LF	5	8.00	5.00±0.10	8.69	6.80	11.00
10114828-xxx06LF	6	9.25	6.25±0.15	9.94	8.05	12.25
10114828-xxx07LF	7	10.50	7.50±0.15	11.19	9.30	13.50
10114828-xxx08LF	8	11.75	8.75±0.15	12.44	10.55	14.75
10114828-xxx09LF	9	13.00	10.00±0.15	13.69	11.80	16.00
10114828-xxx10LF	10	14.25	11.25±0.20	14.94	13.05	17.25
10114828-xxx11LF	11	15.50	12.50±0.20	16.19	14.30	18.50
10114828-xxx12LF	12	16.75	13.75±0.20	17.44	15.55	19.75
10114828-xxx13LF	13	18.00	15.00±0.20	18.69	16.80	21.00
10114828-xxx14LF	14	19.25	16.25±0.20	19.94	18.05	22.25
10114828-xxx15LF	15	20.50	17.50±0.20	21.19	19.30	23.50

mat'l. code				surface	tolerance	projection	product family		
ltr				ISO 1302	ISO 406/ISO 1101		FitMate		
ecn no dr date				tolerances unless otherwise specified			title		
L BLX-N-47289 JH 2023/01/17				angles	.0±.5	mm	WTB 1.25MM WAFER 180° SMT		
				linear	.00±.25	scale 1:1	dwg no sheet1 of 2 size		
				0°±2°	.000±.010		10114828 A4		
				dr Jeffrey.Huang	-	Amphenol FCI	type Product Customer Drawing		
				enfr Jeffrey.Huang	-				
				chr TIM YAO	-				
				appd TIM YAO	-				
sheet index	revision	L							
	sheet	1~2							

ITEM	MATERIAL	DESCRIPTION
1	THERMOPLASTIC HIGH TEMPERATURE	HOUSING
2	COPPER ALLOY	TERMINAL
3	COPPER ALLOY	HOLD DOWN



ASSEMBLY CAP

10114828-XXXXX1LF

mat'l. code				surface	ISO 1302	tolerance	ISO 406/ISO 1101	projection	product family				
ltr				ecn no	dr	date	tolerances unless otherwise specified		 mm	FitMate			
L	ELX-N-47289	JH	2023/01/17	angles	linear	.0±.5	scale 1:1			title			
				0±2°		.00±.25			WTB 1.25MM WAFER 180° SMT				
						.000±.010			dwg no		sheet2 of 2	size	
				dr	Jeffrey.Huang	-			10114828		A4		
				engr	Jeffrey.Huang	-			type		Product Customer Drawing		
				chr	TIM YAO	-							
				appd	TIM YAO	-							
sheet index	revision	L											
	sheet	1~2											