

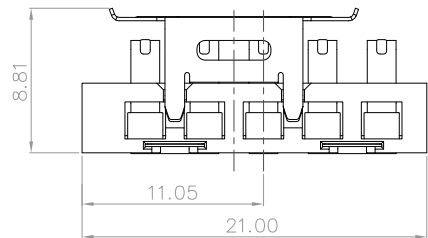
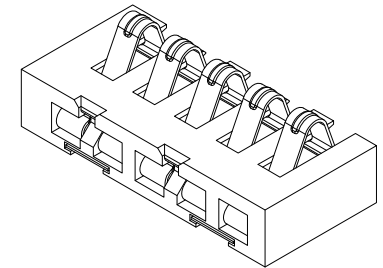
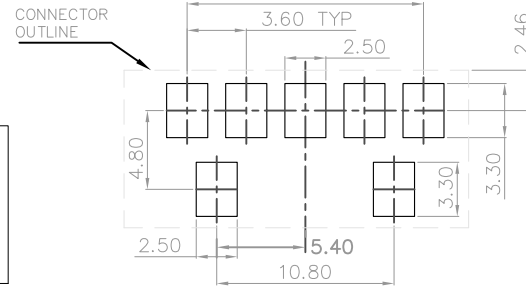
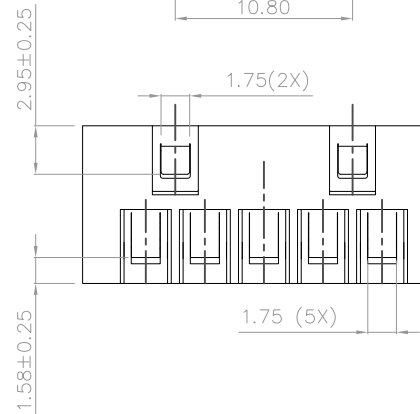
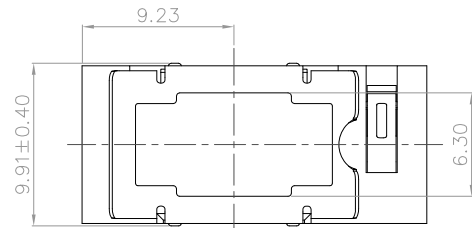
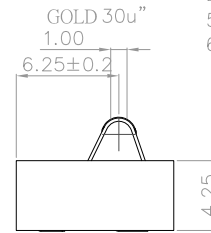
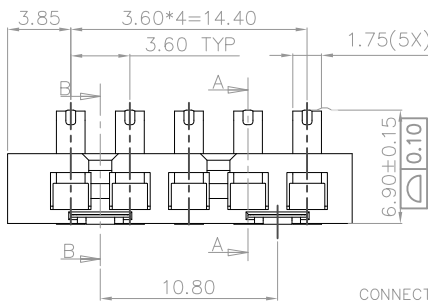
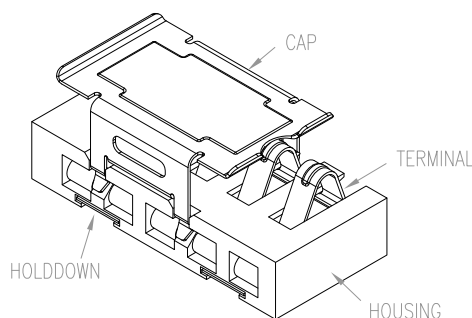
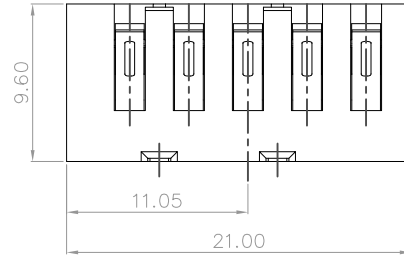
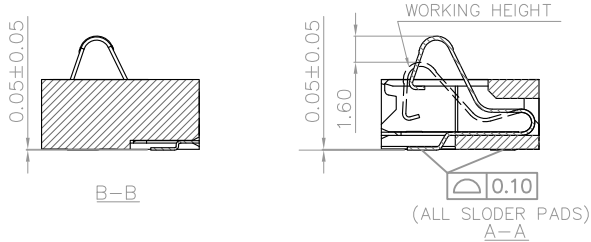


PART NO.

10116040-001LF

NOTES:

- MATERIAL:  
HOUSING: HIGH PERFORMANCE RESIN, GLASS FILLED, UL94 V-0, COLOR: NATURAL.  
TERMINAL: TI-CU ALLOY.  
CAP: STAINLESS SLEEL.  
HOLDDOWN: STAINLESS SLEEL.
- FINISH:  
TERMINAL:  
CONTACT AREA: GOLD PLATED 30u" MIN.  
ALL AREA: GOLD PLATED 1u" MIN.  
UNDER NICKEL PLATED 50u" MIN.  
HOLDDOWN:  
ALL AREA: GOLD PLATED 1u" MIN.  
UNDER NICKEL PLATED 50u" MIN.
- NORMAL FORCE: 1.25N Min. FOR 1.6mm COMPRESSION.
- THE PRODUCT SPEC. PLS. REFER TO GS-12-674.
- THE PACKING SPEC. PLS. REFER TO GS-14-1545.
- THE SUFFIX "LF" MEANS FOR LEAD FREE PROCESS.



mat'l. code		surface ASME Y14.5		tolerance ASME Y14.5		projection MM		product family BATTERY	
ltr ecn no dr date		tolerances unless otherwise specified		angles		scale		title 5 PINS 3.60mm PITCH BATTERY CONNECTOR	
A	T10-0130	LS	01-19-11	0.25	1°	1:1		dwg no 10116040	
				.XX±0.15				sheet 1 of 1 size A4	
				.XXX±0.10				type CUSTOMER Drawing	
		dr LEIF SHEN 01-19-11		engr LEIF SHEN 01-19-11		chr GARY HSIEH 01-19-11		appd JOSEPH HSIA 01-19-11	
sheet index	revision sheet	A	1						