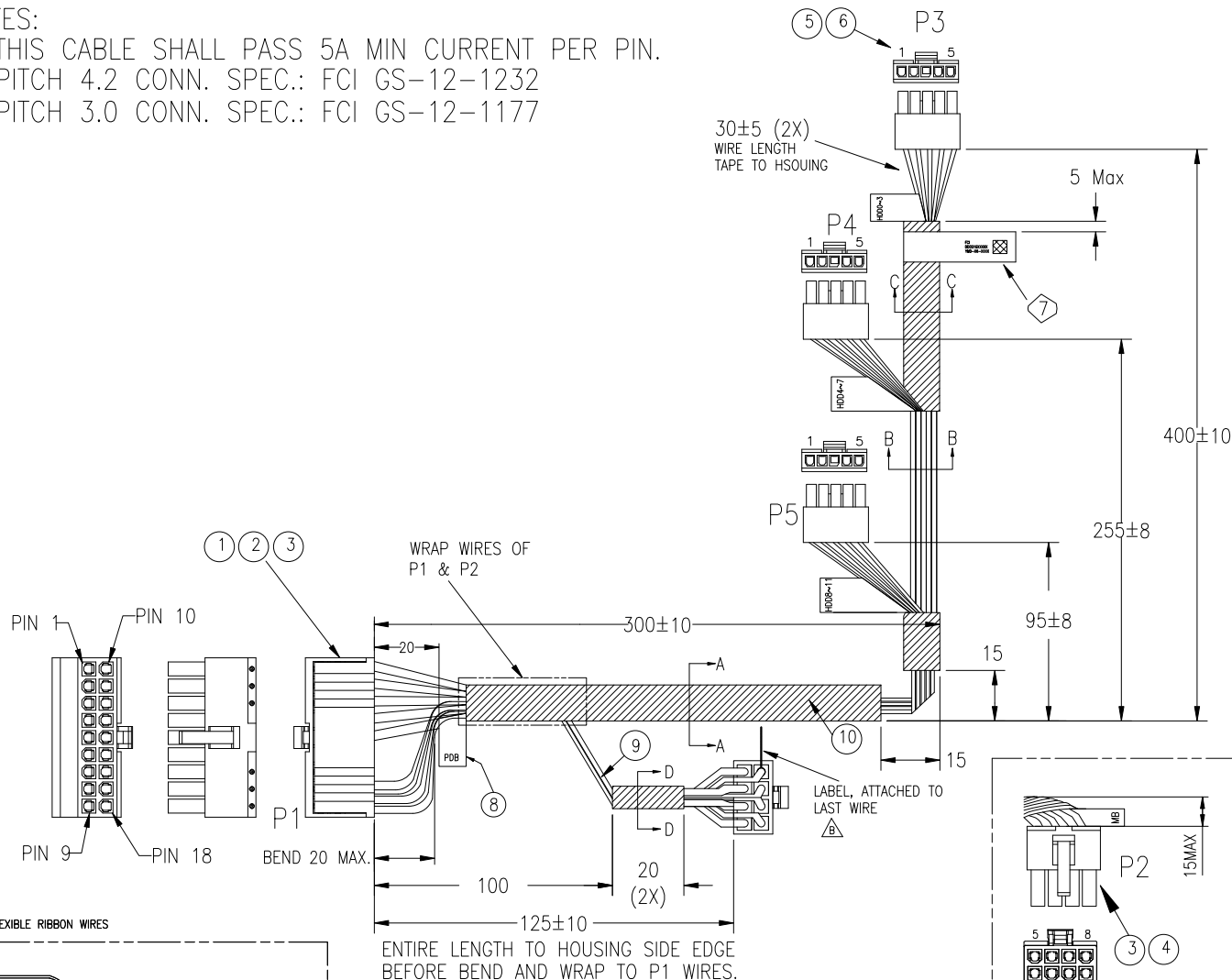


- NOTES:
 1. THIS CABLE SHALL PASS 5A MIN CURRENT PER PIN.
 2. PITCH 4.2 CONN. SPEC.: FCI GS-12-1232
 3. PITCH 3.0 CONN. SPEC.: FCI GS-12-1177



CURRENT RATING

PBD(P1)	
Pin	Current (A)
1	7.5
2	7.5
3	7.5
4	8.5
5	8.5
6	8.5
7	8.5
8	8.5
9	8.5
10	7.5
11	7.5
12	8.5
13	8.5
14	8.5
15	8.5
16	8.5
17	8.5
18	8.5

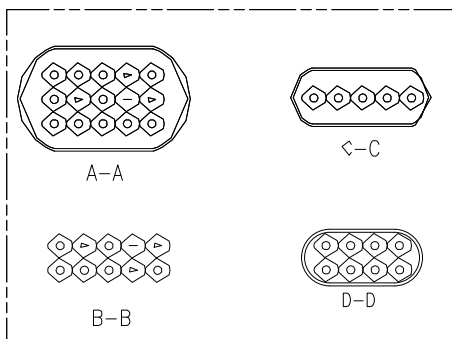
HDD0~3(P3)	
Pin	Current (A)
1	5.5
2	5.5
3	5.5
4	5.5
5	5.5

HDD4~7(P4)	
Pin	Current (A)
1	5.5
2	5.5
3	5.5
4	5.5
5	5.5

HDD8~11(P5)	
Pin	Current (A)
1	5.5
2	5.5
3	5.5
4	5.5
5	5.5

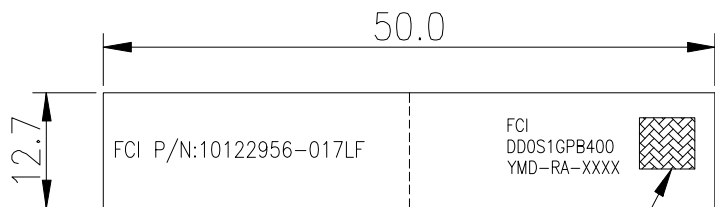
MB(P2)	
Pin	Current (A)
1	10
2	10
3	10
4	10
5	10
6	10
7	10
8	10

UL2555 FLEXIBLE RIBBON WIRES



spec ref	dr BEER FU	2013-09-16	projection	MM	size A3	scale 1:1
tolerance std	eng BEER FU	2013-09-16			ecn no ELX-T-19698	rel level RELEASED
TOLERANCES UNLESS OTHERWISE SPECIFIED surface ✓	chr BEER FU	2013-09-16				
	appr BEER FU	2013-09-16	title RIGHT ANGLE WIRE OUTLET CABLE ASSEMBLY		dwg no 10122956-017LF	
	linear 0.X ± 0.3 0.XX ± 0.13 0.XXX ± 0.05 angular 0° ± 2°	www.fci.com	cat. no.	CUSTOMER	sheet 1 of 2	

LABEL A DETAIL



QR CODE
Reading: FCIDDOS1GPB400YMDRAXXXX

FCI —————> CABLE SUPPLIER
 DDOS1GPB400 —————> CUSTOMER P/N: DDOS1GPB400
 YMD-RA-XXXX
 XXXX: SERIAL NUMBERS, FROM 0000 TO 9999
 RX: FCI REVISION X, RA MEANS REVISION A
 Y: 4 MEANS 2014, 5 MEANS 2015
 M: "1" MENAS JANUARY
 "A" MENAS OCTOBER
 "C" MENAS DECEMBER
 D: "1" MENAS 1ST DATE
 "A" MENAS 10TH DATE
 "V" MENAS 31TH DATE

WIRING DIAGRAM

SIGNAL NAME	UL2555 FLEXIBLE RIBBON WIRES			PDB	MB	HDD0~3	HDD4~7	HDD8~11
				P1	P2	P3	P4	P5
5V	20AWG, X1	BLACK		1		5		
GND	20AWG, X1	BLACK		2		3		
GND	20AWG, X1	BLACK		3		4		
GND	20AWG, X2	BLACK		4			3, 4	
GND	20AWG, X2	BLACK		5				3, 4
GND	18AWG, X1	BLACK		6	4			
GND	18AWG, X1	BLACK		7	3			
GND	18AWG, X1	BLACK		8	2			
GND	18AWG, X1	BLACK		9	1			
5V	20AWG, X1	BLACK		10			5	
5V	20AWG, X1	BLACK		11				5
12V	20AWG, X2	BLACK		12		1, 2		
12V	20AWG, X2	BLACK		13			1, 2	
12V	20AWG, X2	BLACK		14				1, 2
12V	18AWG, X1	BLACK		15	8			
12V	18AWG, X1	BLACK		16	7			
12V	18AWG, X1	BLACK		17	6			
12V	18AWG, X1	BLACK		18	5			



LABEL B DETAIL

10	N.A.	ACETOUS TAPE, BLACK
9	N.A.	UL2555 CERTIFIED RIBBON WIRES, FLEXIBLE, FLAMMABILITY VW-1
8	LABEL B, X5	LABEL DIMENSION 12.7X26
7	LABEL A, X1	LABEL DIMENSION 12.7X50
6	FCI 10127718-001LF, X15	MINITEK PWR 3.0 CRIMPING TERMINAL, PbZ, TIN PLATING
5	FCI 10130523-05LF, X3	MINITEK PWR 3.0 HOUSING, VERTICAL TYPE, UL94 V-0, BLACK
4	FCI 10127815-08LF, X1	MINITEK PWR 4.2 HOUSING, VERTICAL TYPE, UL94 V-0, NATURE
3	FCI 10130517-121LF, X26	HIGH CURRENT TERMINAL,HIGH CONDUCTIVE COPPER, TIN PLATING
2	FCI 10122956-BC1801A, X1	MINTEK PWR 4.2 R/A HOUSING COVER, UL94 V-0, NATURE
1	FCI 10122956-H18002, X1	MINITEK POWER 4.2 R/A HOUSING, UL 94V-0, NATURE
ITEM	VENDOR P/N	DISCRPTION

www.fci.com	cat. no.	-	CUSTOMER	sheet 2 of 2	rev B

