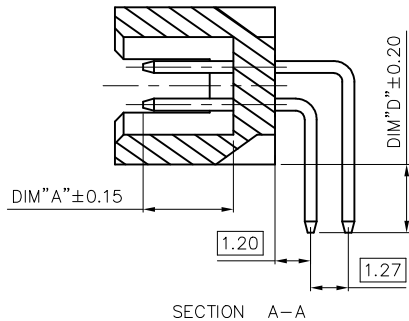
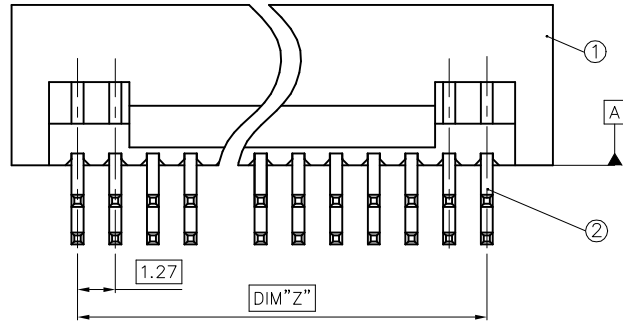
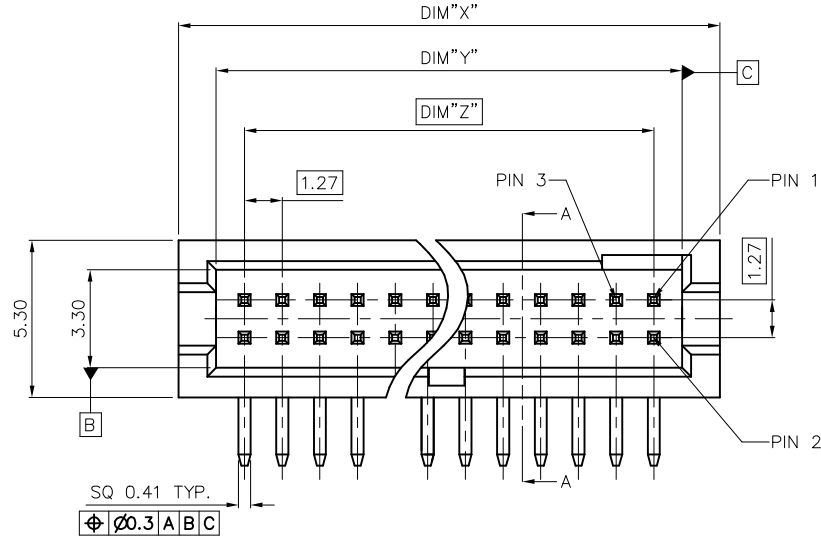


PART NO.
20021212



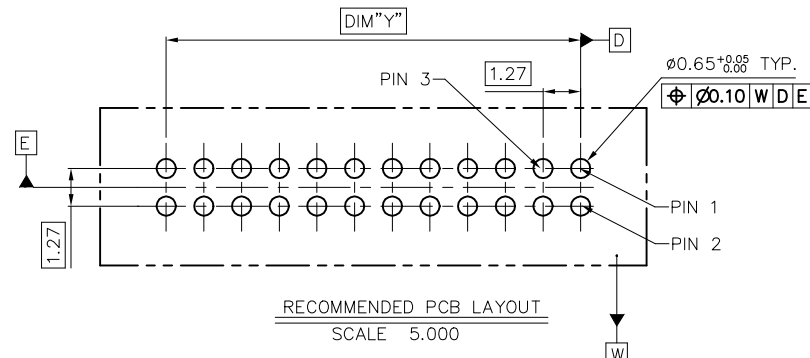
NOTES: UNLESS OTHERWISE SPECIFIED

- ALL DIMENSIONS ARE IN MILLIMETER, PER ASME Y14.5M-2009.
- ELECTRICAL CHARACTERISTICS:
 - VOLTAGE RATING: 125 VAC MAX..
 - CURRENT RATING: 1.0 A MAX. PER PIN, 30°C RISE ABOVE AMBIENT.
 - CONTACT RESISTANCE: 20 MILLIOHMS MAX. FOR INITIAL, 40 MILLIOHMS MAX. AFTER TEST.
 - DIELECTRIC WITHSTANDING VOLTAGE: 500V AC R.M.S..
 - INSULATION RESISTANCE: 1000 MEGOHMS MIN..
- OTHER CHARACTERISTICS:
 - THE PRODUCT WILL WITHSTAND EXPOSURE TO 260°C PEAK TEMPERATURE FOR 10 SECONDS IN A WAVE SOLDER OR VAPOR PHASE REFLOW OVEN.
 - PRODUCT SPEC: GS-12-629.
 - PACKAGE SPEC: GS-14-1420.
 - MATE WITH: 20021311 / 20021321 / 20021323.
 - THIS PRODUCT MEETS EUROPEAN UNION DIRECTIVES AND OTHER COUNTRY REGULATIONS AS DESCRIBED IN GS-22-008.

2	CONTACT	COPPER ALLOY	1.27µm MIN. NICKEL PLATING OVERALL UNDERPLATED 1.27µm MIN. MATTE TIN OR G/F PLATING OVER NICKEL AT TAIL GOLD OR GXT PLATING ON CONTACT AREA			
1	HOUSING	THERMOPLASTIC UL 94V-0	MOLDED BLACK			
ITEM	DESCRIPTION	MATERIAL	TREATMENT			
mat'l. code		surface	tolerance			
ISO 1302 ✓		ISO 406	ISO 1101			
ltr ecn no dr date		tolerances unless otherwise specified	projection			
F	ELX-N-23548	TIM YAO	03/21/16	0.X±0.30	mm	product family HPL 585
G	ELX-N-291051	GRACE LIU	04/02/26	0.XX±0.20		
				0.XXX±0.10		
		angles	linear	scale 1:1		title MINITEK 1.27
		0±2°				
		dr	GRACE LIU	04/02/26	dwg no sheet 1 of 2 size	
		enrg	GRACE LIU	04/02/26	20021212 A3	
		chr	LEI LQ	04/02/26	Amphenol FCI	
		appd	TIM YAO	04/02/26	type Product Customer Drawing	
sheet index	revision	G				
sheet	1					

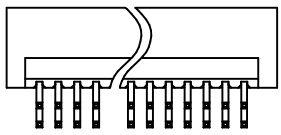
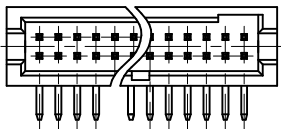
PART NO.	POS.	DIM"X"	DIM"Y"	DIM"Z"
20021212-XXX06XXLF	2 X 3	6.99	4.45	2.54
20021212-XXX08XXLF	2 X 4	8.26	5.72	3.81
20021212-XXX10XXLF	2 X 5	9.53	6.99	5.08
20021212-XXX12XXLF	2 X 6	10.80	8.26	6.35
20021212-XXX14XXLF	2 X 7	12.07	9.53	7.62
20021212-XXX16XXLF	2 X 8	13.34	10.80	8.89
20021212-XXX18XXLF	2 X 9	14.61	12.07	10.16
20021212-XXX20XXLF	2 X 10	15.88	13.34	11.43
20021212-XXX22XXLF	2 X 11	17.15	14.61	12.70
20021212-XXX24XXLF	2 X 12	18.42	15.88	13.97
20021212-XXX26XXLF	2 X 13	19.69	17.15	15.24
20021212-XXX28XXLF	2 X 14	20.96	18.42	16.51
20021212-XXX30XXLF	2 X 15	22.23	19.69	17.78
20021212-XXX32XXLF	2 X 16	23.50	20.96	19.05
20021212-XXX34XXLF	2 X 17	24.77	22.23	20.32
20021212-XXX36XXLF	2 X 18	26.04	23.50	21.59
20021212-XXX38XXLF	2 X 19	27.31	24.77	22.86
20021212-XXX40XXLF	2 X 20	28.58	26.04	24.13
20021212-XXX42XXLF	2 X 21	29.85	27.31	25.40
20021212-XXX44XXLF	2 X 22	31.12	28.58	26.67
20021212-XXX46XXLF	2 X 23	32.39	29.85	27.94
20021212-XXX48XXLF	2 X 24	33.66	31.12	29.21
20021212-XXX50XXLF	2 X 25	34.93	32.39	30.48
20021212-XXX52XXLF	2 X 26	36.20	33.66	31.75
20021212-XXX54XXLF	2 X 27	37.47	34.93	33.02
20021212-XXX56XXLF	2 X 28	38.74	36.20	34.29
20021212-XXX58XXLF	2 X 29	40.01	37.47	35.56
20021212-XXX60XXLF	2 X 30	41.28	38.74	36.83
20021212-XXX62XXLF	2 X 31	42.55	40.01	38.10
20021212-XXX64XXLF	2 X 32	43.82	41.28	39.37
20021212-XXX66XXLF	2 X 33	45.09	42.55	40.64
20021212-XXX68XXLF	2 X 34	46.36	43.82	41.91
20021212-XXX70XXLF	2 X 35	47.63	45.09	43.18
20021212-XXX72XXLF	2 X 36	48.90	46.36	44.45
20021212-XXX74XXLF	2 X 37	50.17	47.63	45.72
20021212-XXX76XXLF	2 X 38	51.44	48.90	46.99
20021212-XXX78XXLF	2 X 39	52.71	50.17	48.26
20021212-XXX80XXLF	2 X 40	53.98	51.44	49.53
20021212-XXX82XXLF	2 X 41	55.25	52.71	50.80
20021212-XXX84XXLF	2 X 42	56.52	53.98	52.07
20021212-XXX86XXLF	2 X 43	57.79	55.25	53.34
20021212-XXX88XXLF	2 X 44	59.06	56.52	54.61
20021212-XXX90XXLF	2 X 45	60.33	57.79	55.88

PART NO.	POS.	DIM"X"	DIM"Y"	DIM"Z"
20021212-XXX92XXLF	2 X 46	61.60	59.06	57.15
20021212-XXX94XXLF	2 X 47	62.87	60.33	58.42
20021212-XXX96XXLF	2 X 48	64.14	61.60	59.69
20021212-XXX98XXLF	2 X 49	65.41	62.87	60.96
20021212-XXXA0XXLF	2 X 50	66.68	64.14	62.23



20021212 - X X X X X X X L F

- LEAD FREE
- PLATING OPTIONAL
- 1: GOLD FLASH AT CONTACT, 1.27μm MIN. MATTE TIN AT TAIL
- 2: GOLD FLASH AT CONTACT, GOLD FLASH AT TAIL
- 3: 0.25GXT AT CONTACT, 1.27μm MIN. MATTE TIN AT TAIL
- 4: 0.25μm GOLD AT CONTACT, 1.27μm MIN. MATTE TIN AT TAIL
- 5: 0.25μm GOLD AT CONTACT, GOLD FLASH AT TAIL
- 6: 0.38GXT AT CONTACT, 1.27μm MIN. MATTE TIN AT TAIL
- 7: 0.38GXT AT CONTACT, GOLD FLASH AT TAIL
- 8: 0.76GXT AT CONTACT, 1.27μm MIN. MATTE TIN AT TAIL
- 9: 0.76GXT AT CONTACT, GOLD FLASH AT TAIL
- PACKING STYLE
- T: TUBE
- PIN NO. SEE TABLE
- MATING LENGTH (DIM"A")
- 0: 3.05mm, HOUSING: STANDARD
- 1: 3.05mm, HOUSING: FILL 4 HOLES ON BOTH WALLS (40PIN ONLY, SEE VIEW 1)
- TAIL LENGTH (DIM"B")
- 0: 2.30mm (FOR 1.6mm PCB)
- 1: 1.60mm (FOR 1.0mm PCB)
- 2: 2.70mm (FOR 2.0mm PCB)
- RESERVE CODE
- 0: STANDARD



VIEW 1: 20021212-XX140XXLF

mat'l. code		surface		tolerance		projection		product family	
		ISO 1302 ✓		ISO 406 ISO 1101				HPL 585	
ltr		ecn no dr		date		tolerances unless otherwise specified 0.X±0.30 0.XX±0.20 0.XXX±0.10		title	
G								MINITEK 1.27	
						scale 1:1		dwg no sheet2 of 2 size	
								20021212 A3	
								type Product Customer Drawing	
sheet index		revision G							
		sheet 2							

Amphenol FCI

© 2016 AFCI