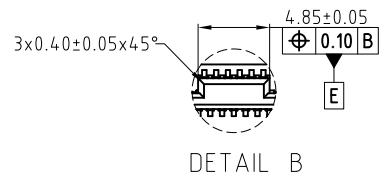
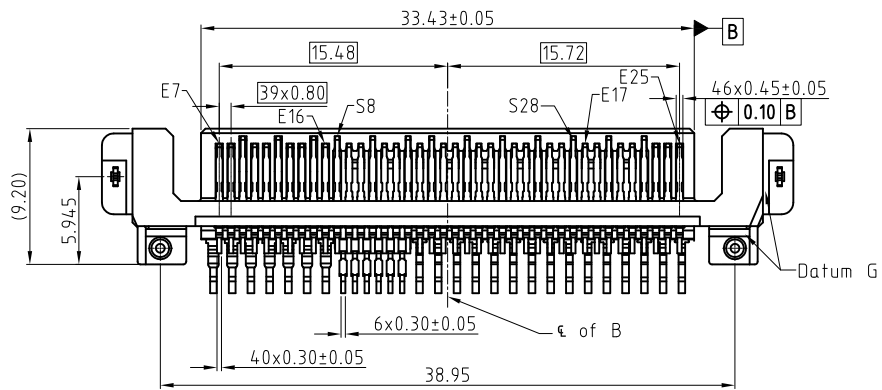
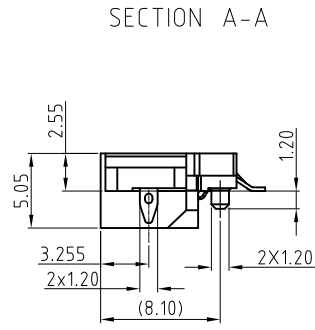
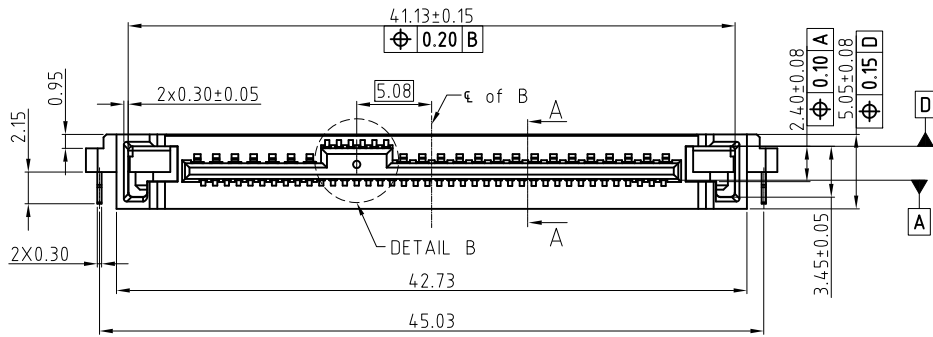
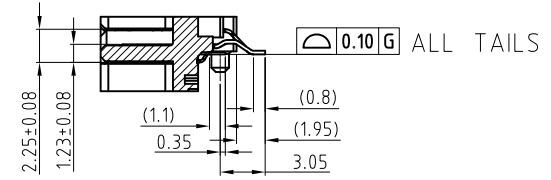
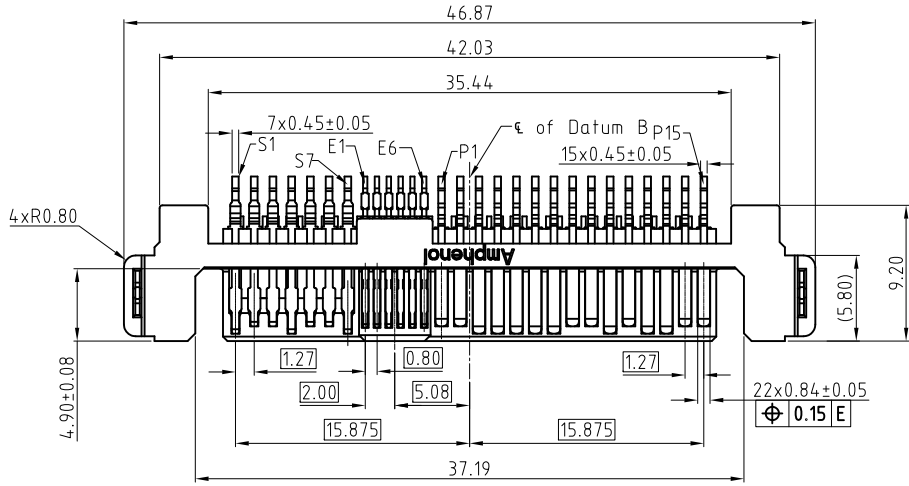


This document is the property of Amphenol Corporation and is delivered on the express condition that it is not to be disclosed, reproduced or used, in whole or in part, for manufacture or sale by anyone other than Amphenol Corporation without its prior consent, & that no right is granted to disclose or to use any information in this document.

CUSTOMER DRAWING

REVISIONS

SYM	ECN	DESCRIPTION	DATE	APPROVED
1	HK----	FIRST RELEASE	03/05/20	IP



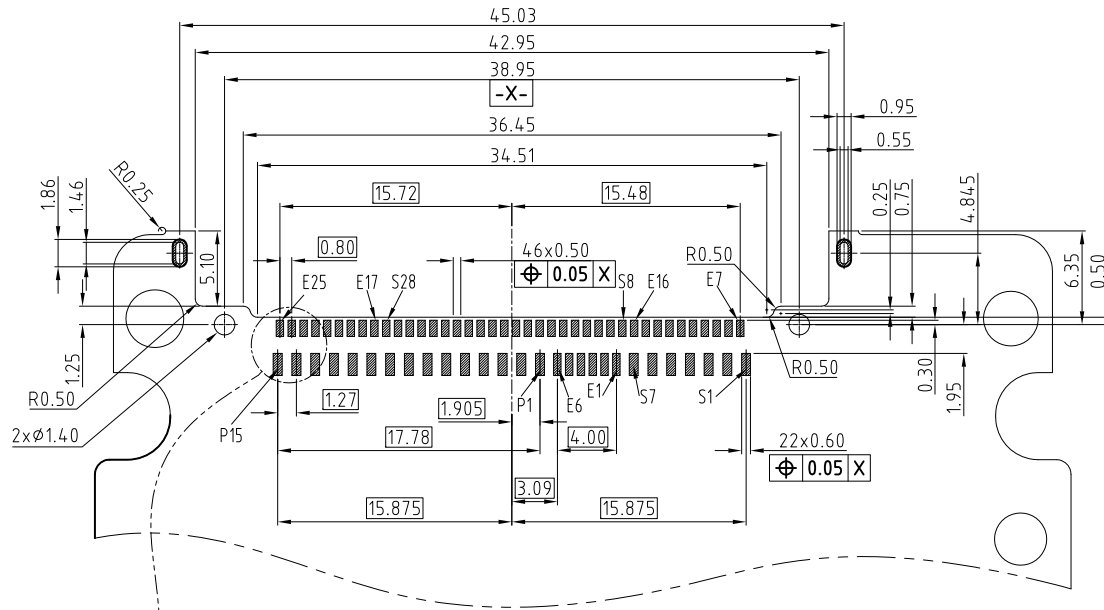
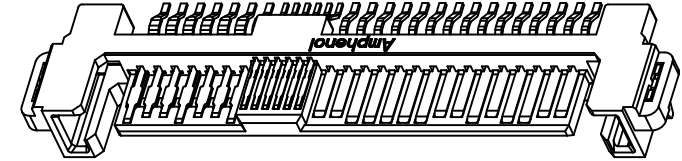
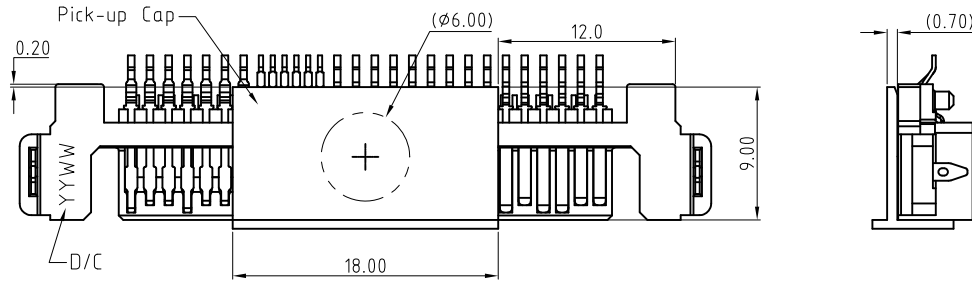
UNLESS OTHERWISE SPECIFIED TOLERANCES		APPROVAL	DATE	Amphenol
	U.S. METRIC	DRAWN	02/26/20	
X	±0.20	Jimmy.zhou		Amphenol East Asia Limited
.XX	±0.20	CHECKED		
.XXX	±0.20	CHECKED		TITLE
FRACTIONS	±0.20			Customer Drawing For
ANGLES	3°			PCIe/SAS R/A SMT PLUG CONNECTOR
FOR MATERIALS AND FINISHES SEE NOTES		DRAWING FILE : VDRAWDWG\PSAS\PSAS4M213033XXX-1		SIZE
REMOVE SHARP EDGES		ANGLE OF PROJECTION		A3
DIMENSIONS				DRAWING NO.
U.S.	INCHES			PSAS4M213033XXX
(METRIC)	(MM)			REV.
				1
SCALE	NONE	SHEET 1 OF 2		

This document is the property of Amphenol Corporation and is delivered on the express condition that it is not to be disclosed, reproduced or used, in whole or in part, for manufacture or sale by anyone other than Amphenol Corporation without its prior consent, & that no right is granted to disclose or to use any information in this document.

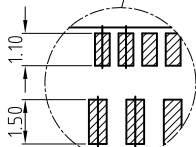
CUSTOMER DRAWING

REVISIONS				
SYM	ECN	DESCRIPTION	DATE	APPROVED
		REFER TO SHEET 1		

WITH PICK-UP CAP



RECOMMENDED PCB LAYOUT
GENERAL TOLERANCE ±0.05mm



SCALE 2:1

NOTES:

- MATERIAL:
 - HOUSING: HIGH TEMPERATURE THERMOPLASTIC UL94V-0, COLOR: BLACK.
 - CONTACTS: COPPER ALLOY;
 - PLATING: REFER TO PN SYSTEM ON MATING AREA;
1.27um MIN NICKEL UNDERPLATED OVERALL;
2.54um MIN MATTE PURE TIN ON SOLDER TAILS.
- SOLDER CLIP: COPPER ALLOY;
 - PLATING: 2.54um MIN MATTE PURE TIN OVER
1.27um MIN NICKEL UNDERPLATED.
- GENERAL SPECIFICATION:
 - 2.1 CURRENT RATING: 1.5A (POWER SECTION);
 - 2.2 CONTACT RESISTANCE: 30mΩ MAX.
 - 2.3 INSULATOR RESISTANCE: 1000MΩ MIN.
 - 2.4 DIELECTRIC WITHSTANDING VOLTAGE: 500 VAC
 - 2.5 OPERATION TEMPERATURE: -40°C~+85°C
 - 2.6 CHARACTERISTIC IMPEDANCE: 85 Ohm(0.80PITCH)/100 Ohm(1.27PITCH)
- DIMENSIONING SHALL BE INTERPRETED PER ASME Y14.5M 1994
- MATERIAL SHOULD BE FULFILLED AMPHENOL SPEC.# S-SN-002, HALOGEN FREE PRODUCTS ALSO NEED TO MEET #S-SN-004
- ORDER PN SYSTEM: PSAS4M213033XXX

MATING AREA PLATING PACKING STYLE
 1- 0.76um MIN Au. NIL- TRAY
 2- 0.38um MIN Au. TR- TAPE AND REEL
 3- Gold Flash
 4- G/F OVER Pd/NICKEL



UNLESS OTHERWISE SPECIFIED TOLERANCES		APPROVAL		DATE	Amphenol
U.S.	METRIC	DRAWN	Jimmy.zhou	02/26/20	
X	±0.20	CHECKED			Amphenol East Asia Limited
.XX	±0.20	CHECKED			
.XXX	±0.20				TITLE
FRACTIONS	±0.20				Customer Drawing For
ANGLES	3°				PCle/SAS R/A SMT PLUG CONNECTOR
FOR MATERIALS AND FINISHES SEE NOTES		DRAWING FILE :			SIZE
REMOVE SHARP EDGES		DRAWING\PSAS\PSAS4M213033XXX-1			DRAWING NO.
DIMENSIONS		ANGLE OF PROJECTION			REV.
U.S.	INCHES				A3
(METRIC)	(MM)	SCALE	NONE	SHEET	2 OF 2