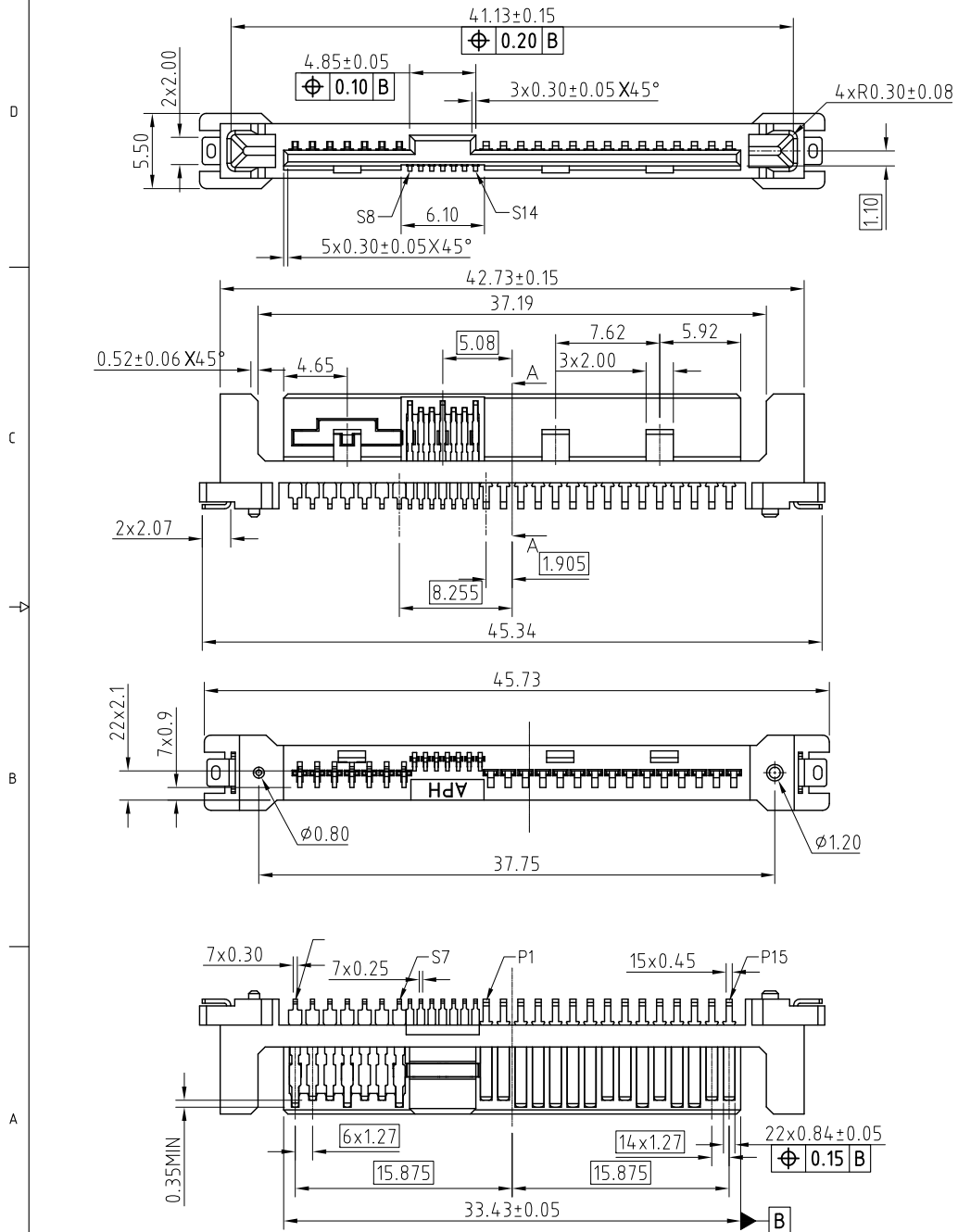


This document is the property of Amphenol Corporation and is delivered on the express condition that it is not to be disclosed, reproduced or used, in whole or in part, for manufacture or sale by anyone other than Amphenol Corporation without its prior consent; & that no right is granted to disclose or to use any information in this document.

REVISIONS				
SYM	ECN	DESCRIPTION	DATE	APPROVED
1	HK---	FIRST RELEASE	04/29/16	IP



SECTION A-A

- NOTES:
- MATERIAL:
 - HOUSING: HIGH TEMPERATURE THERMOPLASTIC UL94V-0, COLOR: BLACK.
 - CONTACTS: BRASS;
 - PLATING: REFER TO PN SYSTEM ON MATING AREA; 1.27um MIN NICKEL UNDERPLATED OVERALL; 2.54um MATTE PURE TIN ON SOLDER TAILS.
 - SOLDER CLIP: BRASS;
 - PLATING: 2.54um MIN MATTE PURE TIN OVER 1.27um MIN NICKEL UNDERPLATED.
 - GENERAL SPECIFICATION:
 - CURRENT RATING: 1.5A (POWER SECTION);
 - CONTACT RESISTANCE: 30mΩ MAX.
 - INSULATOR RESISTANCE: 1000MΩ MIN.
 - DIELECTRIC WITHSTANDING VOLTAGE: 500 VAC
 - OPERATION TEMPERATURE: -0°C~+55°C
 - DIMENSIONING SHALL BE INTERPRETED PER ASME Y14.5M 1994
 - MATERIAL SHOULD BE FULFILLED AMPHENOL SPEC.# S-SN-002, HALOGEN FREE PRODUCTS ALSO NEED TO MEET #S-SN-004
 - ORDER PN SYSTEM:
 - *PN WITH/WO SEPARATOR "-" IS THE SAME*
 - SAS4-M213-003-X-TR
- MATING AREA PLATING PACKING STYLE
- 1- 0.76um MIN Au. NIL- TRAY
- 2- 0.38um MIN Au. TR- TAPE AND REEL
- 3- GOLD FLASH

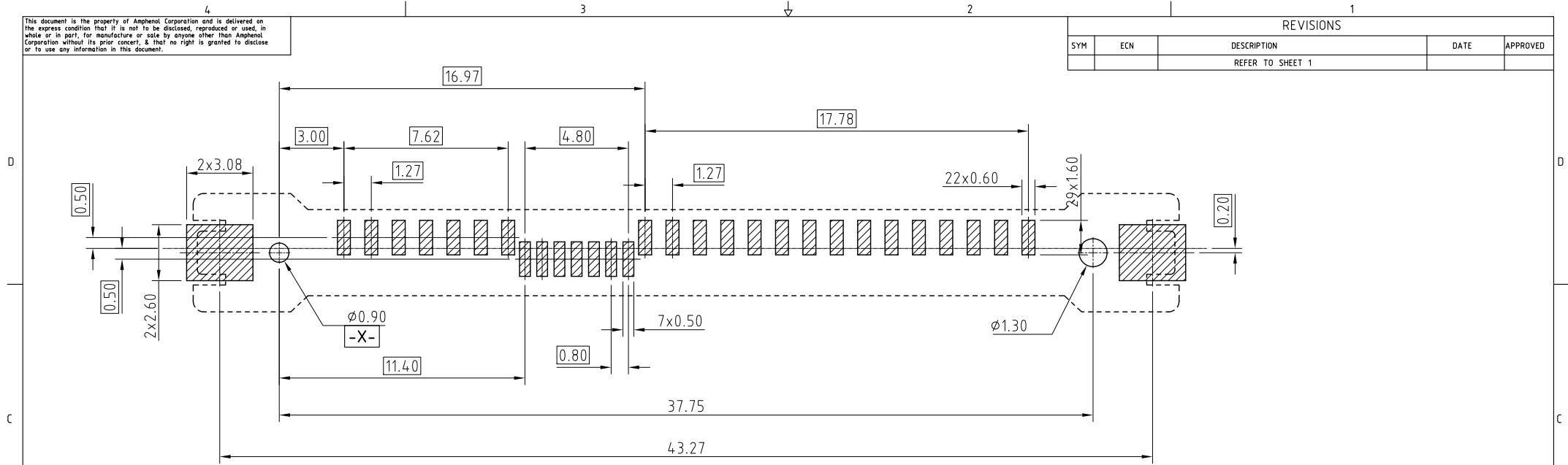
CUSTOMER DRAWING



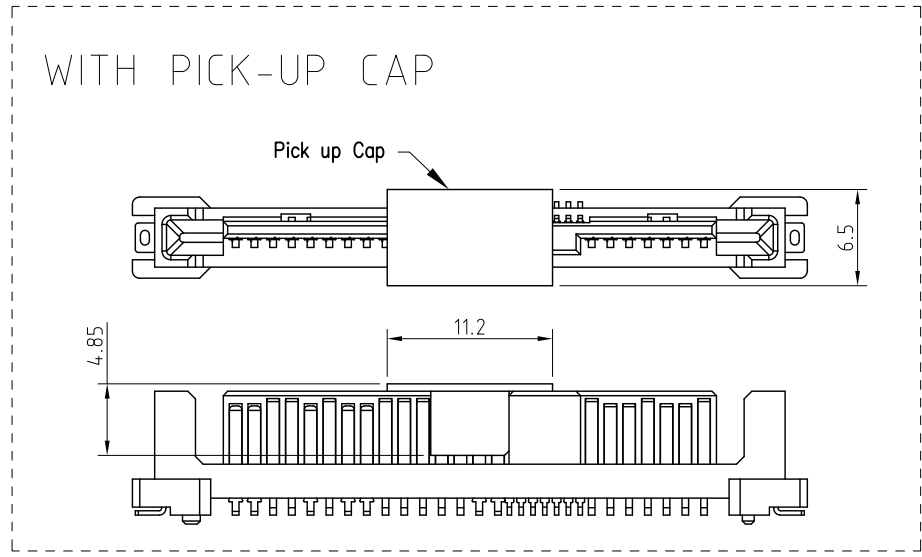
UNLESS OTHERWISE SPECIFIED TOLERANCES		APPROVAL	DATE	Amphenol Amphenol East Asia Limited
U.S. METRIC		DRAWN XIANG WANG	04/29/16	
X +/- 0.50		CHECKED FUAN JIANG	04/29/16	TITLE Customer Drawing For SAS4 V/T SMT PLUG
.XX +/- 0.20				SIZE DRAWING NO. REV.
.XXX +/- 0.15				A3 SAS4-M313-003-XXX 1
FRACTIONS +/- 3"		DRAWING FILE :		SCALE NONE SHEET 1 OF 2
ANGLES +/- 3"				
FOR MATERIALS AND FINISHES SEE NOTES		REMOVE SHARP EDGES	ANGLE OF PROJECTION	
DIMENSIONS				
U.S. INCHES				
(METRIC)	(MM)			

This document is the property of Amphenol Corporation and is delivered on the express condition that it is not to be disclosed, reproduced or used, in whole or in part, for manufacture or sale by anyone other than Amphenol Corporation without its prior consent, & that no right is granted to disclose or to use any information in this document.

REVISIONS				
SYM	ECN	DESCRIPTION	DATE	APPROVED
		REFER TO SHEET 1		



RECOMMENDED PCB LAYOUT
GENERAL TOLERANCE ±0.05MM



CUSTOMER DRAWING

UNLESS OTHERWISE SPECIFIED TOLERANCES		APPROVAL	DATE	Amphenol Amphenol East Asia Limited
U.S. METRIC		DRAWN XIANG WANG	04/29/16	
X	±/	CHECKED FUAN JIANG	04/29/16	TITLE Customer Drawing For SAS4 V/T SMT PLUG
.XX	±/	DRAWING FILE :		SIZE A3
.XXX	±/	ANGLE OF PROJECTION		DRAWING NO. SAS4-M313-003-XXX
FRACTIONS	±/	REMOVE SHARP EDGES		REV. 1
ANGLES	±/	DIMENSIONS		SCALE NONE
FOR MATERIALS AND FINISHES SEE NOTES		U.S. INCHES		SHEET 2 OF 2
		(METRIC) (MM)		