

Gratnells



HEALTHCARE
EXPORT

Our shape,
our trademark™

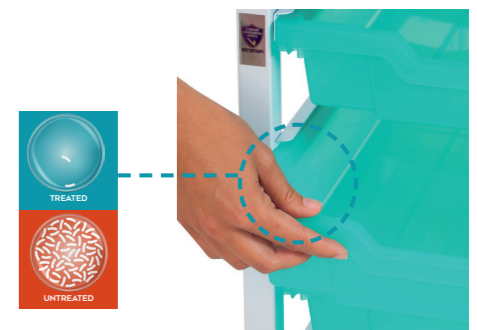


**GRATNELLS SYSTEMS
PROVIDE MAXIMUM STORAGE
AND FLEXIBILITY FOR ALL
HEALTHCARE SETTINGS
INCLUDING HOSPITALS,
SURGERIES, DENTAL
PRACTICES, VETERINARY,
BEAUTY AND AESTHETICS.**



Safe in our hands

Gratnells healthcare system incorporates BioCote® antimicrobial technology making it suitable for use across a range of professional healthcare settings including hospitals, surgeries, dental practices, veterinary, beauty and aesthetics.



BUILT IN BIOCOTE® ANTIMICROBIAL ADDITIVE



Antimicrobial

BioCote® antimicrobial technology is introduced to products during the manufacturing process to provide built-in antimicrobial protection for the product's lifetime. BioCote® technology has been tested according to British Standard BS 6920:2014 and has been

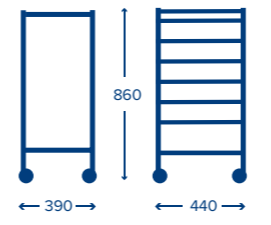
shown not to leach from or wash out of treated materials. It is also resistant to exposure to commonly used cleaning disinfectants. BioCote® antimicrobial technology is compliant with UK and European Biocidal Products Regulation (GB BPR).

COMPACT RANGE

-  Sturdy powder-coated hard-wearing steel
-  Braked castors to secure position
-  100% recyclable
-  Supplied with feet



COMPACT FRAMES



Compact Single Fixed Runner Trolley

Product code	MW102541
Dimensions	H860 x W390 x D440mm
Product weight	9.3kg

Our Compact range is ideal for space-limited areas without compromising performance. This range is compatible with our Standard Grasnells Trays

Material frame	Steel
Assembly	Self assembly

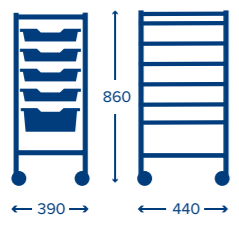
Frame colour **41** White

Tray colour **20** Translucent

Tray colour **29** Kiwi Jelly

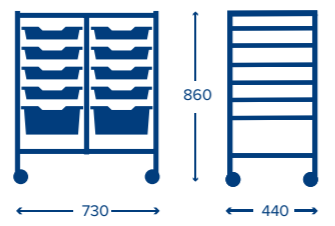
Replace **XX** with tray colour code where applicable

Compact Single Fixed Runner Trolley
4 Shallow & 1 Deep Trays

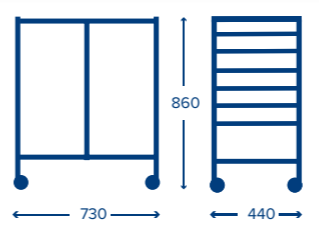


Product code	MWSET17102541XX
Dimensions	H860 x W390 x D440mm
Product weight	12kg

Compact Double Fixed Runner Trolley
8 Shallow & 2 Deep Trays



Product code	MWSET17202541XX
Dimensions	H860 x W730 x D440mm
Product weight	19.4kg



Compact Double Fixed Runner Trolley

Product code	MW202541
Dimensions	H860 x W730 x D440mm
Product weight	13.5kg



FIXED RUNNERS
Cavity free
Hygienic design

All dimensions are for guidance only

CLASSIC RANGE



Sturdy powder-coated hard-wearing steel



Braked castors to secure position



100% recyclable



Supplied with feet

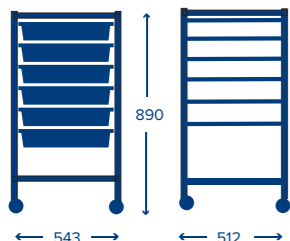
Our Classic range is the cornerstone of healthcare storage. Best in busy healthcare environments, they pair with our Classic wide trays for maximum efficiency.

Material frame Steel
Assembly Self assembly

Frame colour
41
White

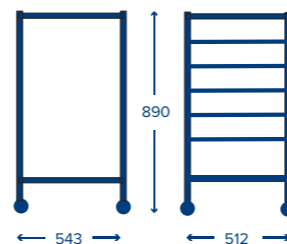
Tray colour
20
Translucent

Classic Single Fixed Runner Trolley
6 Shallow Trays



Product code MWSETX50120
Dimensions H890 x W543 x D512mm
Product weight 20.5kg

Classic Single Fixed Runner Trolley



Product code MW501
Dimensions H890 x W543 x D512mm
Product weight 12.1kg

All dimensions are for guidance only

TRAYS

Gratnells trays, treated with BioCote® antimicrobial protection, deliver lasting hygiene and strength.

Standard Trays

Material frame Polypropylene

Tray colour
20
Translucent

Tray colour
29
Kiwi Jelly

Replace **XX** with tray colour code where applicable

Standard Shallow Antimicrobial Tray



Product code FA01XX
Dimensions H75 x W312 x D427
Product weight 0.56kg
Volume 7L

Standard Deep Antimicrobial Tray



Product code FA02XX
Dimensions H150 x W312 x D427
Product weight 0.77kg
Volume 13.5L

Classic Tray

Material frame ABS

Tray colour
20
Translucent

Classic Shallow Antimicrobial Tray

Our Classic Wide Tray offers large-capacity storage, ideal for healthcare settings and compatible with Classic frames and trolleys



Product code 1X20
Dimensions H90 x W455 x D480mm
Product weight 1.4kg

Standard Extra Deep Antimicrobial Tray



Product code FA25XX
Dimensions H225 x W312 x D430mm
Product weight 0.9kg
Volume 19L

Standard Jumbo Antimicrobial Tray



Product code FA03XX
Dimensions H300 x W312 x D430mm
Product weight 1.25kg
Volume 25L

Antimicrobial Clip On Lid for Standard Range Trays

Clip-on lids offer added security for tray contents



Product code LAF1
Dimensions H30 x W 285 x D431mm
Product weight 0.22kg
Pack/Pallet size 6pk & 48pk /460 per pallet



DEDICATED
ACCOUNT
MANAGEMENT



WORLDWIDE
OPERATION



ACCESS TO
CONTENT
MANAGEMENT
SYSTEM



COLLABORATING
WITH EDUCATIONAL
PROFESSIONALS



HASSLE-FREE
RETURNS



MARKETING
SUPPORT



5 YEAR
GUARANTEE



GRATNELLS.COM

For more information
contact sales@gratnells.co.uk

