

The Gratnells logo is a blue rectangle with the word "Gratnells" written in white, italicized, sans-serif font.A close-up photograph of a Gratnells storage tray. The tray is orange plastic with a grey foam insert. Several clear plastic tubes with yellow caps are arranged in a grid. Each cap has "3min" printed on it. The word "GRATNELLS" is embossed on the orange plastic edge of the tray.

GRATNELLS

**SMART STORAGE  
FOR SCIENCE**

Gratnells inserts are designed to keep your labware safe, organised, and ready for action. Whether it's test tubes, beakers, or safety glasses, there's a perfect-fit insert to protect your essential resources.



Prevent breakages



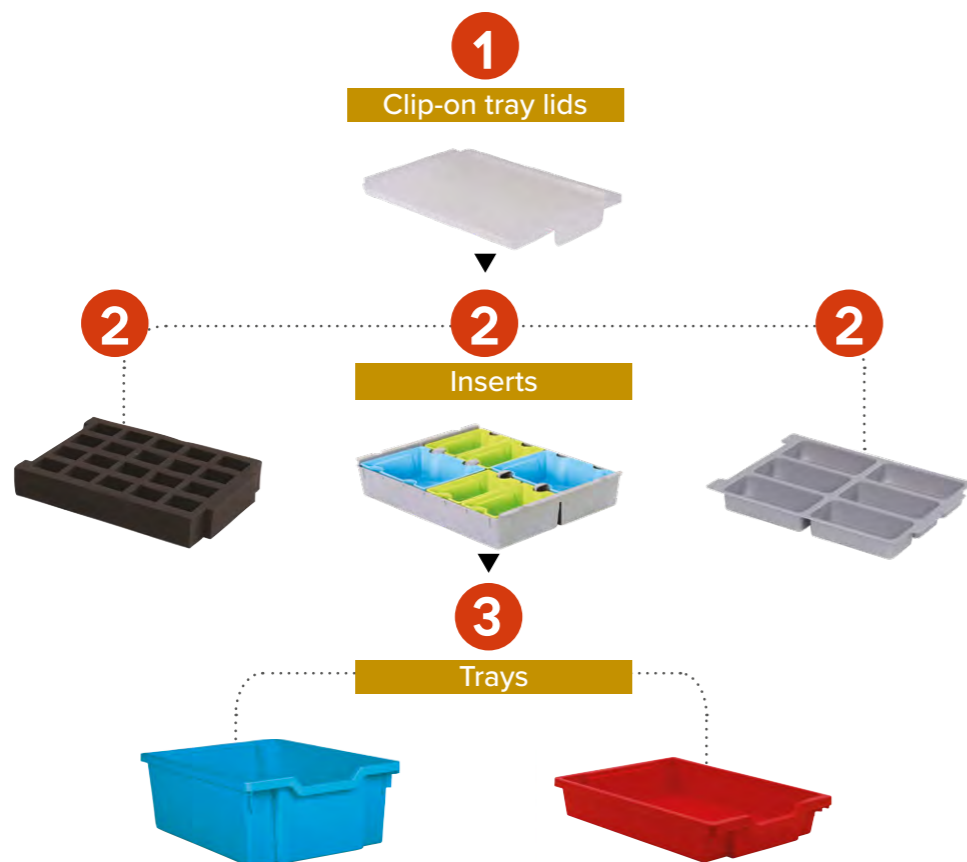
Save set up & clean up time



Create a clutter-free lab

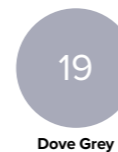
## Everything in its place

Seamless integration with our science range, providing the desired aesthetic with all the benefits of Gratnells quality and experience.

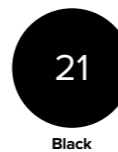


MOULDED INSERTS

These useful inserts are available in different compartmental configurations and can organise a range of science materials.



Dove Grey



Black

Replace **XX** with colour code of your choice if available in the colour description

Material High Impact Polystyrene

Standard Shallow  
1 large 2 small sections



**Product code** IM02F01XX  
**Dimensions** H40 x W274 x D389mm  
**Colour** Dove Grey, Black  
**Product weight** 0.188kg

Standard Shallow  
3 sections



**Product code** IM03F01XX  
**Dimensions** H40 x W274 x D389mm  
**Colour** Dove Grey, Black  
**Product weight** 0.188kg

Standard Shallow  
4 sections



**Product code** IM04F01XX  
**Dimensions** H40 x W274 x D389mm  
**Colour** Dove Grey, Black  
**Product weight** 0.188kg

Standard Shallow  
6 sections



**Product code** IM06F01XX  
**Dimensions** H40 x W274 x D389mm  
**Colour** Dove Grey, Black  
**Product weight** 0.188kg

Standard Shallow  
6 office sections



**Product code** IM07F0119  
**Dimensions** H40 x W274 x D389mm  
**Colour** Dove Grey  
**Product weight** 0.15kg

Standard Shallow  
8 sections



**Product code** IM08F01XX  
**Dimensions** H40 x W274 x D389mm  
**Colour** Dove Grey, Black  
**Product weight** 0.188kg

# FOAM INSERTS

Our foam inserts are perfect for storing delicate equipment such as glassware, or for carrying objects such as calculators and stopwatches around a learning space safely.

## FOAM INSERTS

**Standard Extra Deep 60mm**  
20 Glasses  
50 x 40mm



Product code	IF020BF2560
Dimensions	H60 x W270 x D390mm
Colours	Grey
Product weight	0.1085kg

**Standard Deep 50mm**  
30 calculators 65 x7mm



Product code	IF030BF0250
Dimensions	H50 x W270 x D390mm
Colours	Grey
Product weight	0.1055kg

**Standard Deep 50mm**  
30+1 calculators 70 x12mm



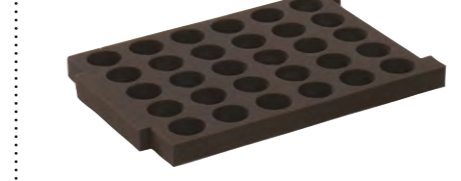
Product code	IF031BF0250
Dimensions	H50 x W270 x D390mm
Colours	Grey
Product weight	0.1055kg

**Standard Deep 35MM**  
30 Stopwatch 55 X 10mm



Product code	IF033BF0235
Dimensions	H35 x W270 x D395mm
Colour	Grey
Product weight	0.687kg

**Standard Deep 30mm**  
30 Bottles 45mm



Product code	IF045BF0250
Dimensions	H30 x W270 x D395mm
Colours	Grey
Product weight	0.0685kg

**Standard Deep 50mm**  
30 bottles 48mm



Product code	IF048BF0250
Dimensions	H50 x W270 x D390mm
Colours	Grey
Product weight	0.101kg



Material Polyurethane

**Standard Deep 60mm**  
56 test tubes 25mm



Product code	IF056BF0260
Dimensions	H60 x W270 x D390mm
Colours	Grey
Product weight	0.114kg

**Standard Deep 60mm**  
108 test tubes 15mm



Product code	IF108BF0260
Dimensions	H60 x W270 x D395mm
Colours	Grey
Product weight	0.114kg

**Standard Deep 50mm**  
4 digital balances  
145 x 41mm



Product code	IF004BF0250
Dimensions	H10 x W270 x D390mm
Colour	Grey
Product weight	0.1055kg

**Standard Deep 40mm**  
Customisable squares 20 x 20mm



Product code	IF320BF0240
Dimensions	H40 x W270 x D395mm
Colours	Grey
Product weight	0.097kg

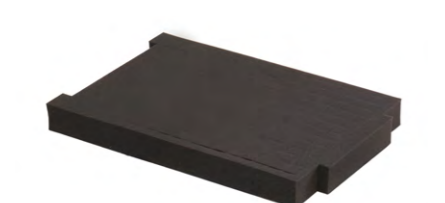
**Standard Deep 40mm**  
Customisable squares 12 x 12mm



Product code	IF312BF0240
Dimensions	H40 x W270 x D395mm
Colours	Grey
Product weight	0.097kg

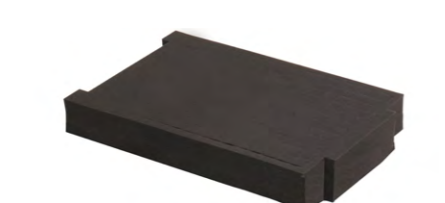
Foam inserts are cut to fit a Standard Shallow Tray or Standard Deep Tray and can be used to store a range of objects securely such as calculators, stopwatches, safety goggles, reagent bottles, test tubes and boiling tubes. There is also the option for a customisable foam inset for those irregular-shaped, delicate objects.

**Standard Deep 15mm**  
Blank



Product code	IF315BF0215
Dimensions	H15 x W272 x D355mm
Colour	Grey
Product weight	0.021kg

**Standard Deep 40mm**  
Blank

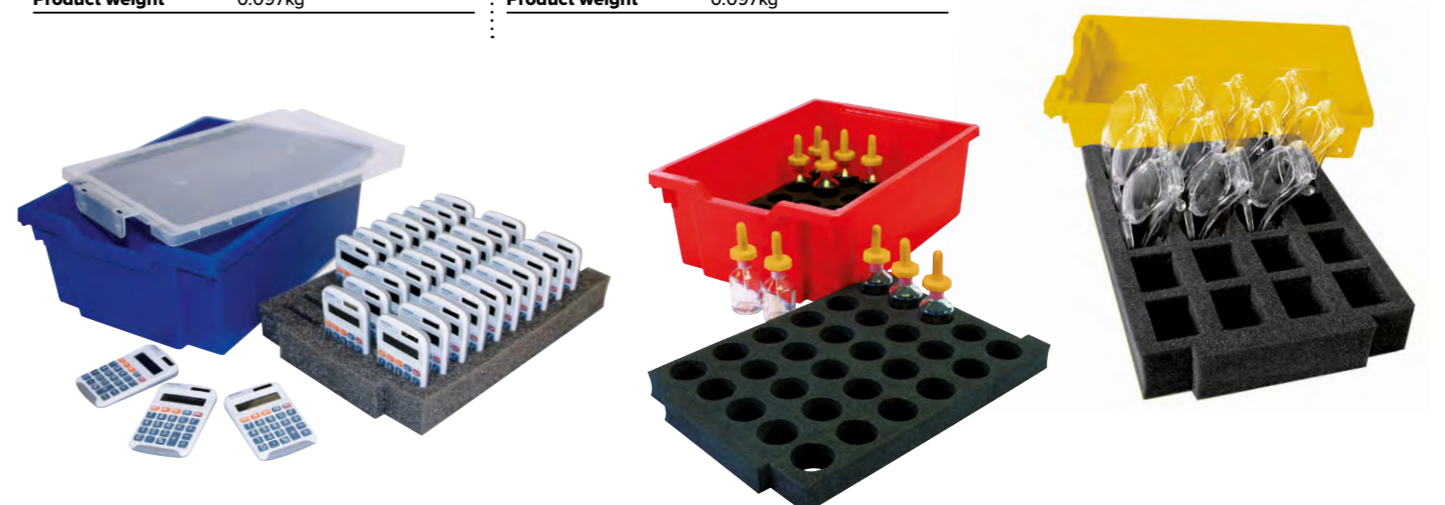


Product code	IF340BF0240
Dimensions	H40 x W270 x D395mm
Colour	Grey
Product weight	0.097kg

**Standard Deep 50mm**  
Blank



Product code	IF350BF0250
Dimensions	H50 x W270 x D390mm
Colour	Grey
Product weight	0.1055kg



## SortED INSERTS

SortED is a range of removable modular tray inserts designed to fit Gratnells Shallow and Deep Trays.



Dishwasher safe

Small and medium inserts hold a myriad of small parts. The large insert can be used to hold the smaller inserts or longer components in the top of the tray.

**Material** Polypropylene

### SortED Retail Pack of 52



**Product code** SERETAIL01  
**Colour** Multicolour Antimicrobial  
**Pack size** 52

- Supports the organisation of science equipment
- Reduces set up and clear up time of practical science activities
- SortED inserts can help personalise the resources different children require
- Encourages students to be responsible for the resources
- Easily maintain a high level of cleanliness as the inserts are dishwasher safe
- Stores many different resources in one tray

### SortED Large Insert



**Product code** SE0279P10  
**Dimensions** H58 x 285 x 387mm  
**Product weight** 0.36  
**Colour** Plum Purple Antimicrobial  
**Pack size** 10

### SortED Medium Insert



**Product code** SE0480P40  
**Dimensions** H57 x W135 x D178mm  
**Product weight** 0.09kg  
**Colour** Cyan Blue Antimicrobial  
**Pack size** 40

### SortED Small Insert



**Product code** SE0881P80  
**Dimensions** H56 x W90 x D135mm  
**Product weight** 0.06kg  
**Colour** Jolly Lime Antimicrobial  
**Pack size** 80

## OTHER ACCESSORIES



108  
25°



### Clip-on Lid for Standard Range Trays

Clip-on lids provide extra security for items stored in trays, such as glassware or electronics. The translucent lid allows students and teachers to quickly view the contents of the tray, making it easy to find resources.

**Product code** LF  
**Dimensions** H30 x W285 x D431mm  
**Product weight** 0.22kg  
**Colour** Translucent



### Wire White Test Tube Insert

A wire mesh insert that can hold up to 108 x 25mm test tubes. Fits into a Deep Tray.

**Product code** WIRETT2541  
**Dimensions** H120 x W267 x D351mm  
**Product weight** 0.58kg  
**Material** Plastic (nylon) coated wire



TO SEE OUR FULL RANGE OF INSERTS & ACCESSORIES CLICK OR SCAN QR CODE





DEDICATED  
ACCOUNT  
MANAGEMENT



WORLDWIDE  
OPERATION



ACCESS TO  
CONTENT  
MANAGEMENT  
SYSTEM



COLLABORATING  
WITH EDUCATIONAL  
PROFESSIONALS



HASSLE-FREE  
RETURNS



MARKETING  
SUPPORT



5 YEAR  
GUARANTEE



GRATNELLS.COM

For more information  
contact [sales@gratnells.co.uk](mailto:sales@gratnells.co.uk)



Scan QR code for  
latest version of brochure