



Exterior Products



Welcome Home





- Titan XTERIOR Prime is a foundation cover designed to withstand everyday activities, as well as mother nature.
- Our exclusive reinforced panel design is built strong to resist damage caused by lawn care accidents and playful children.
- Offers superior protection from high winds, frost heaving, and hail.
- Complements any home with the realistic appearance of poured concrete or stucco foundations.
- Achieves beauty with increased strength and durability; without increasing installation time or inventory costs by utilizing traditional foundation vents and standard vinyl skirting accessories.
- Panel colors include White, Clay, and Dove.



Titan XTERIOR Prime Panels

Part No.	Width	Length	Color	Package Weight
555071	15-5/8"	144"	White	65 lbs
555074	15-5/8"	144"	Clay	65 lbs
555076	15-5/8"	144"	Dove	65 lbs



Titan XTERIOR Prime Skirting - Corner Kit

Part No.	Height	Color	Package Weight
555231	48"	White	4.3 lbs
555234	48"	Clay	4.3 lbs
555236	48"	Dove	4.3 lbs

WHITE

CLAY

DOVE

Available Colors



- Built to defend your home from the rigorous demands of Mother Nature's elements.
- 2" Insulation helps keep homes warmer in the winter and cooler in the summer. Available in White, Clay, and Dove to complement any home.
- Unique corner kits include notched top trim for easy installation.
- Automatic vents available in white, black, gray and brown.
- Designed to survive a non-commercial gas or electric weed trimmer accident.
- Preventol™ EPS protects the foam from termites and is safe for humans and pets.
- Moisture management helps guard the home from mold and moisture damage.



Traditional Vinyl Skirting



Titan Xterior Elite

Titan XTERIOR Elite Panels

Part No.	Width	Length	Color
554471	47"	144"	White
554474	47"	144"	Clay
554476	47"	144"	Dove
554161	15-5/8"	144"	White
554164	15-5/8"	144"	Clay
554166	15-5/8"	144"	Dove

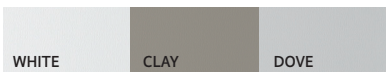


Titan XTERIOR Elite Corner Kit with Notched Top Trim Front

Part No.	Height	Color	Package Weight
554231	48"	White	13.76 lbs
554234	48"	Clay	13.76 lbs
554236	48"	Dove	13.76 lbs



Available Colors





Accessories



Titan Xterior Prime Skirting - Bottom Channel

Part No.	Length	Color	Package Weight
332011	11'	White	86.5 lbs
332014	11'	Clay	86.5 lbs
332016	11'	Dove	86.5 lbs



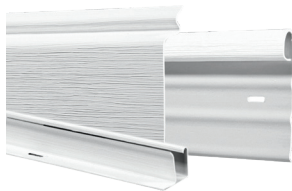
Titan Xterior Prime Skirting - Top Trim Back

Part No.	Length	Color	Package Weight
332021	11'	White	105.8 lbs
332024	11'	Clay	105.8 lbs
332026	11'	Dove	105.8 lbs



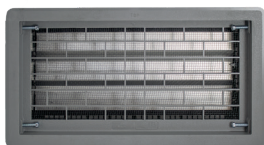
Titan Xterior Prime Skirting - Top Trim Front

Part No.	Length	Color	Package Weight
332031	11'1"	White	112.1 lbs
332034	11'1"	Clay	112.1 lbs
332036	11'1"	Dove	112.1 lbs



Titan Xterior Prime Skirting - Trim Kit without Hardware

Part No.	Color	Package Weight	Linear Ft. Carton
332211	White	91.5 lbs	165 LF, Top Trim Back, Top Trim Front, Bottom Channel
332214	Clay	91.5 lbs	165 LF, Top Trim Back, Top Trim Front, Bottom Channel
332216	Dove	91.5 lbs	165 LF, Top Trim Back, Top Trim Front, Bottom Channel



Automatic Vent

Part No.	Width	Length	Color	Piece Weight
55070002	16"	8"	Gray	1.2 lbs
55070003	16"	8"	Black	1.2 lbs
55070004	16"	8"	Brown	1.2 lbs
55070005	16"	8"	White	1.2 lbs



Accessories

Titan XTERIOR Elite Bottom Channel

Part No.	Length	Color	Package Weight
554011	144"	White	51.24 lbs
554014	144"	Clay	51.24 lbs
554016	144"	Dove	51.24 lbs



Titan XTERIOR Elite Top Trim Back

Part No.	Length	Color	Package Weight
554021	144"	White	36.69 lbs
554024	144"	Clay	36.69 lbs
554026	144"	Dove	36.69 lbs



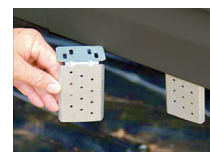
Titan XTERIOR Elite Top Trim Front

Part No.	Length	Color	Package Weight
554031	144"	White	50.28 lbs
554034	144"	Clay	50.28 lbs
554036	144"	Dove	50.28 lbs



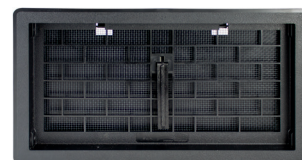
Undermount Skirt Hanger for Titan XTERIOR Elite

Part No.	Package Weight
3343779	8.6 lbs



Manual Vent

Part No.	Width	Height	Color	Package Weight
2994	16"	8"	White	1.6 lbs
2998	16"	8"	Black	1.6 lbs
2999	16"	8"	Brown	1.6 lbs





- High-performance locking system engineered to reduce bending, warping and twisting; providing enhanced structural integrity.
- Durability to handle the wear and tear from lawn maintenance, keeping up with active kids, or withstanding the elements during landscaping projects.
- Hidden vents are integrated to keep the inside comfortable and dry, while maintaining a beautiful exterior.
- Contractor friendly—easy to estimate, easier to install.
- Stylish stucco finish with on-trend color options.
- Recyclable & made with Recycled Content.

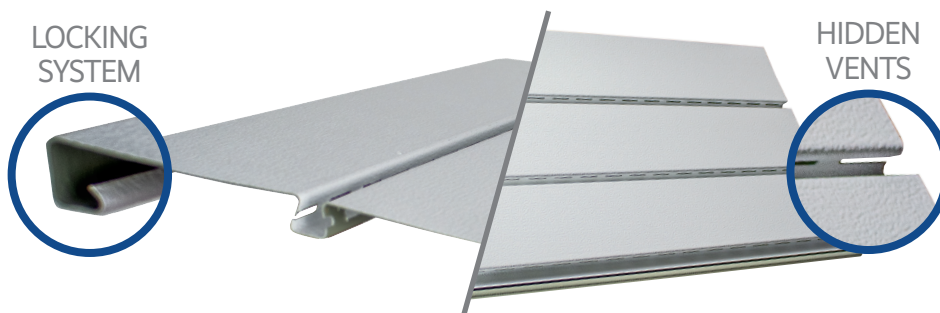
Valor Hidden Vent Panel

Part No.	Width	Length	Color	Package Weight
353991	12"	144"	White	79 lbs
353999	12"	144"	Charcoal	79 lbs
353992	12"	144"	Chocolate	79 lbs
353994	12"	144"	Clay	79 lbs
353996	12"	144"	Dove	79 lbs
353998	12"	144"	Sand	79 lbs

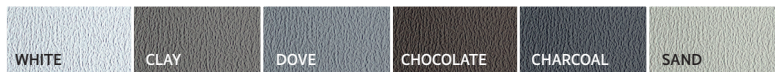


Valor Solid Panel

Part No.	Width	Length	Color	Package Weight
353062	12"	144"	Chocolate	81 lbs
353069	12"	144"	Charcoal	81 lbs
353064	12"	144"	Clay	81 lbs
353066	12"	144"	Dove	81 lbs
353068	12"	144"	Sand	81 lbs
353061	12"	144"	White	81 lbs



Available Colors





Valor™ Accessories

VINYL SKIRTING

Valor Vinyl Skirting - Bulk Bottom Channel

Part No.	Length	Color	Package Weight
332011	11'	White	86.5 lbs
332012	11'	Chocolate	86.5 lbs
332014	11'	Clay	86.5 lbs
332016	11'	Dove	86.5 lbs
332018	11'	Sand	86.5 lbs
332019	11'	Charcoal	86.5 lbs



Valor Vinyl Skirting - Bulk Top Trim Back

Part No.	Length	Color	Package Weight
332021	11'	White	105.8 lbs
332022	11'	Chocolate	105.8 lbs
332024	11'	Clay	105.8 lbs
332026	11'	Dove	105.8 lbs
332028	11'	Sand	105.8 lbs
332029	11'	Charcoal	105.8 lbs



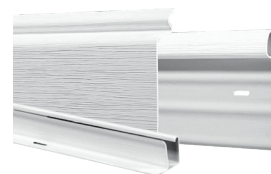
Valor Vinyl Skirting - Bulk Top Trim Front

Part No.	Length	Color	Package Weight
332031	11'1"	White	112.1 lbs
332032	11'1"	Chocolate	112.1 lbs
332034	11'1"	Clay	112.1 lbs
332036	11'1"	Dove	112.1 lbs
332038	11'1"	Sand	112.1 lbs
332039	11'1"	Charcoal	112.1 lbs



Valor Vinyl Skirting - Trim Kit without Hardware

Part No.	Color	Package Weight	Linear Ft. Carton
332211	White	91.5 lbs	165 LF, Top Trim Back, Top Trim Front, Bottom Channel
332212	Chocolate	91.5 lbs	165 LF, Top Trim Back, Top Trim Front, Bottom Channel
332214	Clay	91.5 lbs	165 LF, Top Trim Back, Top Trim Front, Bottom Channel
332216	Dove	91.5 lbs	165 LF, Top Trim Back, Top Trim Front, Bottom Channel
332218	Sand	91.5 lbs	165 LF, Top Trim Back, Top Trim Front, Bottom Channel
332219	Charcoal	91.5 lbs	165 LF, Top Trim Back, Top Trim Front, Bottom Channel



Valor Vinyl Skirting - Corner Kit

Part No.	Height	Color	Package Weight
555231	48"	White	4.3 lbs
555234	48"	Clay	4.3 lbs
555236	48"	Dove	4.3 lbs
555232	48"	Chocolate	4.3 lbs
555238	48"	Sand	4.3 lbs
555239	48"	Charcoal	4.3 lbs



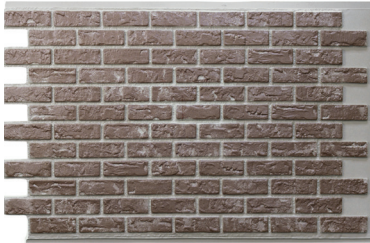


MASON'S BRICK

- Two panel heights available.
- Authentic brick look without additional time, labor or cost.
- Pre-trimmed for easy installation.
- Three easy to install corner options.



Brick Finishes



Mason's Brick Panel

Part No.	Width	Length	Color
5586366001T	36"	60"	Brown
5586366002T	36"	60"	Red
5586486001T	48"	60"	Brown
5586486002T	48"	60"	Red

Mason's Brick Panel - Vented

Part No.	Width	Length	Color
5586366001TV	36"	60"	Brown
5586366002TV	36"	60"	Red

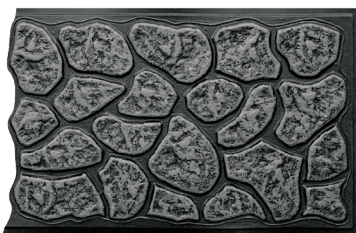
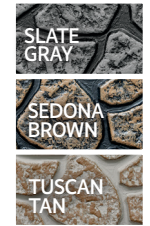


MASON'S ROCK

- Three panel heights available.
- Pre-trimmed for easy installation.
- 5-Year limited warranty.



Rock Finishes



Mason's Rock Panels

Part No.	Width	Length	Color
55832601T	32"	60"	Slate Gray
55836601T	36"	60"	Slate Gray
55848601T	48"	60"	Slate Gray
55832602T	32"	60"	Sedona Brown
55836602T	36"	60"	Sedona Brown
55848602T	48"	60"	Sedona Brown
55832603T	32"	60"	Tuscan Tan
55836603T	36"	60"	Tuscan Tan
55848603T	48"	60"	Tuscan Tan

Mason's Rock Vented Panels

Part No.	Width	Length	Color
55836602TV	36"	60"	Sedona Brown
55836603TV	36"	60"	Tuscan Tan
55836601TV	36"	60"	Slate Gray



Accessories

Mason's Brick Aluminum 2" Corner

Part No.	Width	Height	Length	Color	Package Weight
558601	2"	2"	50"	Tuscan Tan	4.8 lbs
558602	2"	2"	50"	Black	4.8 lbs



Mason's Brick Top Front Trim - Optional

Part No.	Length	Color	Package Weight	Linear Ft. Carton
5586161	4' 9"	Brown	3 lbs	24 LF
5586162	4' 9"	Red	3 lbs	24 LF



Access Panel Door

Part No.	Width	Height	Color	Package Weight
5180240MB	31"	23"	Black	4.8 lbs



Access Panel Door Flange Mount

Part No.	Width	Height	Color	Package Weight
291824S	24"	18"	White	3 lbs



Access Panel Door Track Mount

Part No.	Width	Height	Color	Package Weight
291824M	24"	18"	White	3 lbs



Aluminum Bottom Channel

Part No.	Length	Color	Package Weight
2925055	10'	Sandstone	2.5 lbs
2925057	10'	Brown	2.5 lbs
2925059	10'	Slate Gray	2.5 lbs



Metal Studs

Part No.	Width	Length	Color	Package Weight
293121592	2-1/2"	12'	Silver	3 lbs
293121593	3-5/8"	12'	Silver	4 lbs



Screws

Part No.	Length	Color	Package Weight
29255	1"	Sandstone	2.23 lbs
2995	1"	Black	2.23 lbs



PREMIUM PLUS SKIRTING

HIGH PERFORMANCE VINYL SKIRTING

- High performance, extra thick vinyl skirting offers outstanding protection and durability for manufactured homes.
- Exclusive Plyvex™ polymer withstands weathering, temperature extremes and fading.
- Easy "under-the-home" access without special access doors.
- 7 rich colors and unique embossing that looks like freshly painted wood.
- Solid and vented panels excel in heavy frost or high wind areas.
- Lifetime Limited Warranty.



Premium Plus Vinyl Skirting Center Vent Panel .040

Part No.	Width	Length	Color	Package Weight
333331	16"	140"	White	66.4 lbs
333332	16"	140"	Chocolate	66.4 lbs
333333	16"	140"	Gray	66.4 lbs
333334	16"	140"	Clay	66.4 lbs
333337	16"	140"	Tan	66.4 lbs
333338	16"	140"	Sand	66.4 lbs
333339	16"	140"	Charcoal	66.4 lbs



Premium Plus Vinyl Skirting Solid Panel .040

Part No.	Width	Length	Color	Package Weight
332061	16"	140"	White	66.4 lbs
332062	16"	140"	Chocolate	66.4 lbs
332063	16"	140"	Gray	66.4 lbs
332064	16"	140"	Clay	66.4 lbs
332067	16"	140"	Tan	66.4 lbs
332068	16"	140"	Sand	66.4 lbs
332069	16"	140"	Charcoal	66.4 lbs



Available Colors



Premium Plus Vinyl Skirting Bulk Bottom Channel

Part No.	Length	Color	Package Weight
332011	11'	White	86.5 lbs
332012	11'	Chocolate	86.5 lbs
332013	11'	Gray	86.5 lbs
332014	11'	Clay	86.5 lbs
332017	11'	Tan	86.5 lbs
332018	11'	Sand	86.5 lbs
332019	11'	Charcoal	86.5 lbs



Premium Plus Vinyl Skirting Bulk Top Trim Back

Part No.	Length	Color	Package Weight
332021	11'	White	105.8 lbs
332022	11'	Chocolate	105.8 lbs
332023	11'	Gray	105.8 lbs
332024	11'	Clay	105.8 lbs
332027	11'	Tan	105.8 lbs
332028	11'	Sand	105.8 lbs
332029	11'	Charcoal	105.8 lbs



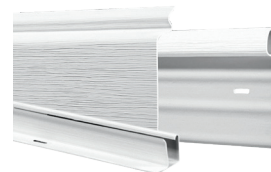
Premium Plus Vinyl Skirting Bulk Top Trim Front

Part No.	Length	Color	Package Weight
332031	11'1"	White	112.1 lbs
332032	11'1"	Chocolate	112.1 lbs
332033	11'1"	Gray	112.1 lbs
332034	11'1"	Clay	112.1 lbs
332037	11'1"	Tan	112.1 lbs
332038	11'1"	Sand	112.1 lbs
332039	11'1"	Charcoal	112.1 lbs



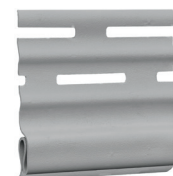
Premium Plus Vinyl Skirting Trim Kit without Hardware

Part No.	Color	Package Weight	Linear Ft. Carton
332219	Charcoal	91.5 lbs	165 LF, Top Trim Back, Top Trim Front, Bottom Channel
332212	Chocolate	91.5 lbs	165 LF, Top Trim Back, Top Trim Front, Bottom Channel
332214	Clay	91.5 lbs	165 LF, Top Trim Back, Top Trim Front, Bottom Channel
332213	Gray	91.5 lbs	165 LF, Top Trim Back, Top Trim Front, Bottom Channel
332218	Sand	91.5 lbs	165 LF, Top Trim Back, Top Trim Front, Bottom Channel
332217	Tan	91.5 lbs	165 LF, Top Trim Back, Top Trim Front, Bottom Channel
332211	White	91.5 lbs	165 LF, Top Trim Back, Top Trim Front, Bottom Channel



Vinyl Starter Strip

Part No.	Width	Length	Package Weight	Linear Ft. Carton
39VSTR	2-1/2"	12'	53.9	480 Linear Ft./Carton





- The industry-standard in value vinyl skirting.
- Attractive and reliable protection for manufactured homes.
- Engineered vinyl provides ruggedness with good color retention.
- Five colors to match skirting needs.
- 25-Year limited warranty.



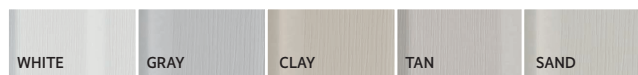
Eagle Vinyl Skirting Solid Panel

Part No.	Width	Length	Color	Package Weight
343081	16"	140"	White	58.6 lbs
343083	16"	140"	Gray	58.6 lbs
343084	16"	140"	Clay	58.6 lbs
343087	16"	140"	Tan	58.6 lbs
343088	16"	140"	Sand	58.6 lbs



Eagle Vinyl Skirting Vented Panel

Part No.	Width	Length	Color	Package Weight
349991	16"	140"	White	58.6 lbs
349993	16"	140"	Gray	58.6 lbs
349994	16"	140"	Clay	58.6 lbs
349997	16"	140"	Tan	58.6 lbs
349998	16"	140"	Sand	58.6 lbs



Available Colors



Eagle Vinyl Skirting Deluxe Bulk Bottom Channel

Part No.	Length	Color	Package Weight
343011	11'	White	72.3 lbs
343013	11'	Gray	72.3 lbs
343017	11'	Tan	72.3 lbs
343018	11'	Sand	72.3 lbs
332014	11'	Clay	72.3 lbs



Eagle Vinyl Skirting Deluxe Bulk Top Trim Back

Part No.	Length	Color	Package Weight
343021	11'	White	72.3 lbs
343023	11'	Gray	72.3 lbs
343027	11'	Tan	72.3 lbs
343028	11'	Sand	72.3 lbs
332024	11'	Clay	72.3 lbs



Eagle Vinyl Skirting Deluxe Bulk Top Trim Front

Part No.	Length	Color	Package Weight
343051	11'1"	White	87 lbs
343053	11'1"	Gray	87 lbs
343057	11'1"	Tan	87 lbs
343058	11'1"	Sand	87 lbs
332034	11'1"	Clay	87 lbs



Eagle Vinyl Skirting Deluxe Trim Kit Without Hardware

Part No.	Color	Package Weight	Linear Ft. Carton
343251	White	87 lbs	165LF, Top Trim Back, Top Trim Front, Bottom Channel
343253	Gray	87 lbs	165LF, Top Trim Back, Top Trim Front, Bottom Channel
343257	Tan	87 lbs	165LF, Top Trim Back, Top Trim Front, Bottom Channel
343258	Sand	87 lbs	165LF, Top Trim Back, Top Trim Front, Bottom Channel
332214	Clay	87 lbs	165 LF, Top Trim Back, Top Trim Front, Bottom Channel



8" Spikes (200 per-box)

Part No.	Package Weight
3510	14.1 lbs



Nails 1-1/2" (250 per-Box)

Part No.	Package Weight
3352	1.7 lbs



Spikes and Screws

Part No.	Description	Package Weight
3350	100 8" Spikes & 200 1-1/2" Nails	7.99 lbs
3354	100 8" Spikes & 200 #8 Screws	6.25 lbs



Wind Stay Rod (32 per-Bundle)

Part No.	Height	Package Weight
33412	12"	2.2 lbs
33424	24"	4.41 lbs



NOVIK

SHAKES, STONE AND ACCENTS



Novik Hand Cut Stone

NovikStone Hand Cut Stone combines varying sizes of rectangles to create an enticing pattern that features strong shapes in a rugged appearance - perfect for a knee wall, accent wall, or even a full wall since you'll never have to worry about loose stones or stones falling off the wall. NovikStone's Hand Cut Stone is an easy way to achieve the beauty of natural stone without the hassle of mortar, adhesives, or masonry skills.

NovikStone HC Hand-Cut Stone Panel



Part No.	Height	Length	Color	Package Weight	Piece Weight
2310004213	18-1/2"	48"	Bark Blend	32 lbs.	3.15 lbs
2310004208	18-1/2"	48"	Canyon Blend	32 lbs.	3.15 lbs
2310004209	18-1/2"	48"	Desert Blend	32 lbs.	3.15 lbs
2310004207	18-1/2"	48"	Mountain Blend	32 lbs	3.15 lbs



NovikStone HC Hand-Cut Stone Corner

Part No.	Width	Height	Color	Package Weight	Piece Weight	Linear Ft. Carton
23120045213	6-1/8"	19-5/8"	Bark Blend	5.16 lbs	0.84 lbs	7.4 linear ft.
23120045208	6-1/8"	19-5/8"	Canyon Blend	5.16 lbs	0.84 lbs	7.4 linear ft.
23120045209	6-1/8"	19-5/8"	Desert Blend	5.16 lbs	0.84 lbs	7.4 linear ft.
23120045207	6-1/8"	19-5/8"	Mountain Blend	5.16 lbs	0.84 lbs	7.4 linear ft.



Available Blends



- Professional grade and light enough for one person to install in a fraction of the time as compared to stone or stone veneer.
- Seamless joints for an attractive visual appearance.
- No mortar, adhesives, or masonry tools required.
- Impervious to moisture.

- Can be installed at ground level or at the roofline .
- Durable and resists warping, expansion, contraction, and cracking.
- Requires little to no maintenance.
- Complements all types of siding.

Starter strip is required for installation. This item is sold separately.

Novik Hand Laid Brick

NovikStone Hand-Laid Brick replicates a truly classic look. True to its row-by-row inspiration over the centuries, NovikStone Hand-Laid Brick has the color, dimension, lines, and mortar presence to showcase strength, beauty, and durability. Perfect for a knee wall, accent wall, or even a full wall, you'll never have to worry about loose stones or stones falling off the wall. NovikStone's Hand-Laid Brick is an easy way to achieve the beauty of classic brick and mortar without the hassle of mortar, adhesives, or masonry skills.



NovikStone HL Hand-Laid Brick Panel

Part No.	Height	Length	Color	Package Weight	Piece Weight
2310005205	18-1/2"	48"	Brown Blend	33 lbs.	3.15 lbs
2310005214	18-1/2"	48"	Old Red Blend	33 lbs.	3.15 lbs
2310005204	18-1/2"	48"	Red Used Blend	33 lbs.	3.15 lbs



NovikStone HL Hand-Laid Brick Corner

Part No.	Width	Height	Color	Package Weight	Piece Weight	Linear Ft. Carton
23120055205	5-3/4"	18-1/2"	Brown Blend	9 lbs	1.7 lbs	7.4 linear ft.
23120055214	5-3/4"	18-1/2"	Old Red Blend	9 lbs	1.7 lbs	7.4 linear ft.
23120055204	5-3/4"	18-1/2"	Red Used Blend	9 lbs	1.7 lbs	7.4 linear ft.



Available Blends



NOVIK

SHAKES, STONE AND ACCENTS



Novik Stacked Stone

NovikStone Stacked Stone features stones of different sizes stacked together with narrow mortar lines to turn any wall into a focal point. A contemporary design, NovikStone's Stacked Stone is one of our most popular profiles - rugged on looks, while easy to install. Stacked Stone is the simple way to achieve the beauty of natural stone without the hassle of mortar, adhesives, or masonry skills. Its striking appearance is perfect as a knee wall, accent wall, or even a full wall since you'll never have to worry about loose stones or stones falling off the wall.



NovikStone SK Stacked Stone Panel

Part No.	Height	Length	Color	Package Weight	Piece Weight
2310014218	20-1/4"	45"	Moka	36 lbs	3.29
2310014217	20-1/4"	45"	Smoke Gray	36 lbs	3.29



NovikStone SK Stacked Stone Corner

Part No.	Width	Height	Color	Package Weight	Piece Weight	Linear Ft. Carton
23120145218	6.1"	21-1/4"	Moka	5.15 lbs	0.8	7.92 linear ft.
23120145217	6.1"	21-1/4"	Smoke Gray	5.15 lbs	0.8	7.92 linear ft.



Available Blends



- Professional grade and light enough for one person to install in a fraction of the time as compared to stone or stone veneer.
- Seamless joints for an attractive visual appearance.
- No mortar, adhesives, or masonry tools required.
- Impervious to moisture.

- Can be installed at ground level or at the roofline .
- Durable and resists warping, expansion, contraction, and cracking.
- Requires little to no maintenance.
- Complements all types of siding.

Starter strip is required for installation. This item is sold separately.

Novik Dry Stacked Stone

NovikStone Dry Stack Stone delivers the mortarless look of assembled stone in random lengths and split faces that are strategically placed to bring an authentic, organic look to any wall surface. The sleek, modern look of dry stack stone makes a strong visual appearance - perfect for a knee wall, accent wall, or even a full wall since you'll never have to worry about loose stones or stones falling off the wall. NovikStone's Dry Stack Stone is an easy way to achieve the beauty of natural stone without the hassle of mortar, adhesives, or masonry skills.



NovikStone DS Dry Stacked Stone Panel

Part No.	Height	Length	Color	Package Weight	Piece Weight
23100540006	13-3/23"	41-1/2"	Anthracite	22 lbs	1.9
23100540002	13-3/23"	41-1/2"	Basalt	22 lbs	1.9
23100540004	13-3/23"	41-1/2"	Brownstone	22 lbs	1.9
23100540008	13-3/23"	41-1/2"	Limestone	22 lbs	1.9



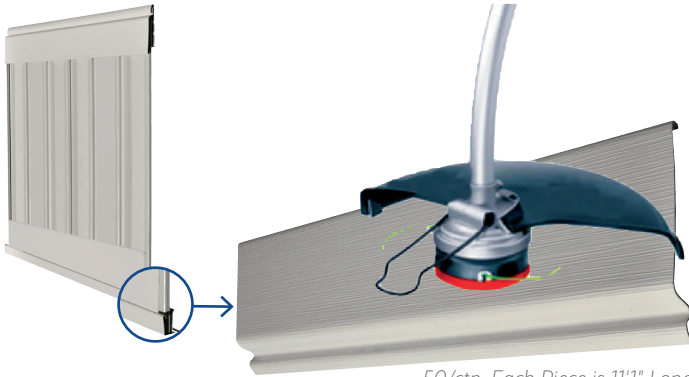
NovikStone DS Dry Stacked Stone Corner

Part No.	Width	Height	Color	Package Weight	Piece Weight	Linear Ft. Carton
23120540006	5.88"	16"	Anthracite	5.25 lbs	0.95	6.3 linear ft.
23120540002	5.88"	16"	Basalt	5.25 lbs	0.95	6.3 linear ft.
23120540004	5.88"	16"	Brownstone	5.25 lbs	0.95	6.3 linear ft.
23120540008	5.88"	16"	Limestone	5.25 lbs	0.95	6.3 linear ft.



Available Blends





50/ctn. Each Piece is 11'1" Long.

Vinyl Skirting Protection

- Keep your home looking nice
- Save maintenance costs
- Reduce yard work time & enjoy your summer
- Maintains value of home
- Easy to Install
- Economical-low cost
- Stays in place throughout the year
- Economical-low cost
- Provides protection when placed in bottom channel

V Guard Vinyl Skirting Protector

Part No.	Color
332031	White
332033	Gray
332034	Clay
332037	Tan
332038	Sand
332036	Dove
332032	Chocolate
332039	Charcoal

Eagle/Premium Skirting Calculator (for 16" panels only)

SINGLE WIDE HOMES

Homes Call Size (ft.) ¹	8 x 32	8 x 35	12 x 65	12 x 70	14 x 60	14 x 65	14 x 70	14 x 76	14 x 80	16 x 70	16 x 80
Perimeter Lineal Feet ²	80	86	146	156	140	150	160	172	180	164	184

Trim Components Needed-Each Trim Component Is 132" Long

Top Trim Back	8	8	14	15	13	14	15	16	17	15	17
Top Trim Front	8	8	14	15	13	14	15	16	17	15	17
Bottom Channel	8	8	14	15	13	14	15	16	17	15	17

Number Of Panels Needed (Eagle And Premium)-Each Panel Is 16" Wide x 140" Long. Average Height Inches³

18	9	10	16	17	15	17	18	19	20	18	20
23	10	11	19	20	18	19	20	22	23	21	23
28	12	13	22	24	21	23	24	26	27	25	28
35	15	17	28	30	27	29	30	33	34	31	35
42	20	22	37	39	35	38	40	43	45	41	46

DOUBLE WIDE HOMES

Homes Call Size (ft.) ¹	24 x 50	24 x 60	24 x 65	24 x 70	28 x 52	28 x 54	28 x 56	28 x 65	28 x 70	28 x 80	30 x 70	32 x 80
Perimeter Lineal Feet ²	144	160	170	180	152	156	160	178	188	208	192	216

Trim Components Needed-Each Trim Component Is 132" Long

Top Trim Back	14	15	16	17	14	15	15	17	18	19	18	20
Top Trim Front	14	15	16	17	14	15	15	17	18	19	18	20
Bottom Channel	14	15	16	17	14	15	15	17	18	19	18	20

Number Of Panels Needed (Eagle And Premium)-Each Panel Is 16" Wide x 140" Long. Average Height Inches³

18	16	18	19	20	17	17	18	20	21	23	21	24
23	18	20	22	23	19	20	20	23	24	26	24	27
28	22	24	26	27	23	24	24	27	29	32	29	33
35	27	30	32	34	29	30	30	34	36	39	36	41
42	36	40	43	45	38	39	40	45	47	52	48	54

Includes hitch-typically 4' per section. Less hitch and additions-Note measure the complete perimeter of the home--- If skirting hitch, additional materials are required. Average height-measure all 4 corners at center of each side-if home is between sizes or heights-move to next largest calculation.

Notes: Calculations shown are based on exact height and completely level ground. Actual material needs may differ. Please add one or more panels for waste or errors



Accessories Cross-Reference

Product	Color	Part No.	Eagle	Mason's Collection	Premium Plus	Valor Vinyl Skirting	Titan XTERIOR Prime	Titan XTERIOR Elite	Width	Height	Length
Access Panel Door	Black	5180240MB	x	x	x	x	x	x	31"	23"	
Access Panel Door Flange Mount	White	291824S	x	x	x	x	x	x	24"	18"	
Access Panel Door Track Mount	White	291824M	x	x	x	x	x	x	24"	18"	
Aluminum Bottom Channel	Sandstone	2925055		x							10'
Aluminum Bottom Channel	Brown	2925057		x							10'
Aluminum Bottom Channel	Slate Gray	2925059		x							10'
Automatic Vent	Gray	55070002						x	16"	8"	
Automatic Vent	Black	55070003						x	16"	8"	
Automatic Vent	Brown	55070004						x	16"	8"	
Automatic Vent	White	55070005						x	16"	8"	
Eagle Deluxe Bulk Bottom Channel	White	343011	x								11'
Eagle Deluxe Bulk Bottom Channel	Gray	343013	x								11'
Eagle Deluxe Bulk Bottom Channel	Tan	343017	x								11'
Eagle Deluxe Bulk Bottom Channel	Sand	343018	x								11'
Eagle Deluxe Bulk Top Trim Back	White	343021	x								11'
Eagle Deluxe Bulk Top Trim Back	Gray	343023	x								11'
Eagle Deluxe Bulk Top Trim Back	Tan	343027	x								11'
Eagle Deluxe Bulk Top Trim Back	Sand	343028	x								11'
Eagle Deluxe Bulk Top Trim Front	White	343051	x								11'1"
Eagle Deluxe Bulk Top Trim Front	Gray	343053	x								11'1"
Eagle Deluxe Bulk Top Trim Front	Tan	343057	x								11'1"
Eagle Deluxe Bulk Top Trim Front	Sand	343058	x								11'1"
Eagle Deluxe Trim Kit Without Hardware	White	343251	x								
Eagle Deluxe Trim Kit Without Hardware	Gray	343253	x								
Eagle Deluxe Trim Kit Without Hardware	Tan	343257	x								
Eagle Deluxe Trim Kit Without Hardware	Sand	343258	x								
Manual Vent	White	2994	x	x	x	x	x		16"	8"	
Manual Vent	Black	2998	x	x	x	x	x		16"	8"	
Manual Vent	Brown	2999	x	x	x	x	x		16"	8"	
Mason's Collection Corners	Tuscan Tan	558601		x					2"	2"	50"
Mason's Collection Corners	Black	558602		x					2"	2"	50"
Metal Studs	Silver	293121592		x					2 1/2"	12'	
Metal Studs	Silver	293121593		x					3 5/8"	12'	

Accessories Cross-Reference

Product	Color	Part No.	Eagle	Mason's Collection	Premium Plus	Valor Vinyl Skirting	Titan XTERIOR Prime	Titan XTERIOR Elite	Width	Height	Length
Premium Plus Bulk Bottom Channel	White	332011			x	x	x				11'
Premium Plus Bulk Bottom Channel	Chocolate	332012		x	x	x					11'
Premium Plus Bulk Bottom Channel	Gray	332013			x						11'
Premium Plus Bulk Bottom Channel	Clay	332014			x	x	x				11'
Premium Plus Bulk Bottom Channel	Dove	332016				x	x				11'
Premium Plus Bulk Bottom Channel	Tan	332017		x	x						11'
Premium Plus Bulk Bottom Channel	Sand	332018			x	x					11'
Premium Plus Bulk Bottom Channel	Charcoal	332019		x	x	x					11'
Premium Plus Bulk Top Trim Back	White	332021			x	x	x				11'
Premium Plus Bulk Top Trim Back	Chocolate	332022		x	x	x					11'
Premium Plus Bulk Top Trim Back	Gray	332023			x						11'
Premium Plus Bulk Top Trim Back	Clay	332024			x	x	x				11'
Premium Plus Bulk Top Trim Back	Dove	332026				x	x				11'
Premium Plus Bulk Top Trim Back	Tan	332027		x	x						11'
Premium Plus Bulk Top Trim Back	Sand	332028			x	x					11'
Premium Plus Bulk Top Trim Back	Charcoal	332029		x	x	x					11'
Premium Plus Bulk Top Trim Front	White	332031			x	x	x				11 1/2"
Premium Plus Bulk Top Trim Front	Chocolate	332032		x	x	x					11 1/2"
Premium Plus Bulk Top Trim Front	Gray	332033			x						11 1/2"
Premium Plus Bulk Top Trim Front	Clay	332034			x	x	x				11 1/2"
Premium Plus Bulk Top Trim Front	Dove	332036				x	x				11 1/2"
Premium Plus Bulk Top Trim Front	Tan	332037		x	x						11 1/2"
Premium Plus Bulk Top Trim Front	Sand	332038			x	x					11 1/2"
Premium Plus Bulk Top Trim Front	Charcoal	332039		x	x	x					11 1/2"
Premium Plus Trim Kit without Hardware	White	332211			x	x	x				
Premium Plus Trim Kit without Hardware	Chocolate	332212		x	x	x					
Premium Plus Trim Kit without Hardware	Gray	332213			x						
Premium Plus Trim Kit without Hardware	Clay	332214			x	x	x				
Premium Plus Trim Kit without Hardware	Dove	332216				x	x				
Premium Plus Trim Kit without Hardware	Tan	332217		x	x						
Premium Plus Trim Kit without Hardware	Sand	332218			x	x					
Premium Plus Trim Kit without Hardware	Charcoal	332219		x	x	x					



Accessories Cross-Reference

Product	Color	Part No.	Eagle	Mason's Collection	Premium Plus	Valor Vinyl Skirting	Titan XTERIOR Prime	Titan XTERIOR Elite	Width	Height	Length
FASTENERS											
Nails 1-1/2", 250 per Box		3352	x		x	x	x				
Screws	Black	2995		x							
Screws	Sandstone	29255		x							
Snap Lock Punch for Vinyl, 1/2" Throat Depth, 8-1/2" Long		623764	x		x	x	x				
Spikes and Nails, 100 - 8" Spikes & 200 1-1/2" Nails		3350	x		x	x	x				
Spikes and Screws, 100 - 8" Spikes & 200 #8 Screws		3354	x		x	x	x				
Spikes, Ground, 8", 200 per Box		3510	x	x	x	x	x				
Undermount Skirt Hanger for Titan XTERIOR ELITE	Silver	3343779						x			
Wind Stay Rod 24" 32 per bundle		33424	x		x	x	x				
Wind Stay Rod, 12" - 32 per bundle		33412	x		x	x	x				
Outside Corner Kit	Dove	555236				x	x	x		48"	
	Clay	555234	x		x	x	x	x		48"	
	White	555231	x		x	x	x	x		48"	
	Chocolate	555232			x	x				48"	
	Sand	555238	x		x	x				48"	
	Charcoal	555239			x	x				48"	
Titan XTERIOR Elite Bottom Channel	White	554011						x			144"
	Clay	554014						x			144"
	Dove	554016						x			144"
Titan XTERIOR Elite Top Trim Back	Dove	554026						x			144"
	White	554021						x			144"
	Clay	554024						x			144"
Titan XTERIOR Elite Corner Kit with Notched Top Trim Front	Dove	554036						x			144"
	Clay	554034						x			144"
	White	554031						x			144"



The Economaster

- Our most popular straight approach fiberglass entry steps.
- Affordable, attractive, and durable.
- Rails sold separately.

The Economaster

Part No.	Number Of Step	Riser Height	Width	Overall Height	Landing Depth	Standard Rail Part No.	Deluxe Rail Part No.	Standard Back Rail Part No.
017142436	2	7"	36"	14"	24"	02124	029124	0236
017212436	3	7"	36"	21"	24"	02224	029224	0236
017282436	4	7"	36"	28"	24"	02324	029324	0236
017352436	5	7"	36"	35"	24"	02424	0294247	0236
018162436	2	8"	36"	16"	24"	02124	029124	0236
018242436	3	8"	36"	24"	24"	02224	029224	0236
018322436	4	8"	36"	32"	24"	02324	029324	0236
018402436	5	8"	36"	40"	24"	02424	029424	0236
018482436	6	8"	36"	48"	24"	02524	029524	0236



GREAT FOR RETAIL DISPLAY

The Economy Display Unit

- This step is designed with built-in handles for easy moving between models on your retail display lot.
- Rails sold separately.

The Economy Display Unit

Part No.	Number Of Step	Riser Height	Width	Overall Height	Landing Depth	Standard Rail Part No.	Deluxe Rail Part No.	Standard Back Rail Part No.
017282436WHB	4	7"	36"	28"	24"	02324	029324	0236
017352436WHB	5	7"	36"	35"	24"	02424	0294247	0236
018242436WHB	3	8"	36"	24"	24"	02224	029224	0236
018322436WHB	4	8"	36"	32"	24"	02324	029324	0236
018402436WHB	5	8"	36"	40"	24"	02424	029424	0236



The 48" Wide

- A popular, mid-sized fiberglass step with full 29" platform.
- Twin railings recommended.
- Enclosed back—suitable for side entry installations.
- Rails sold separately.

The 48" Wide

Part No.	Number Of Step	Riser Height	Width	Overall Height	Landing Depth	Standard Rail Part No.	Deluxe Rail Part No.	Standard Back Rail Part No.	Deluxe Back Rail Part No.
017212948	3	7"	48"	21"	29"	02229	029229	0248	02948
017282948	4	7"	48"	28"	29"	02329	029329	0248	02948
017352948	5	7"	48"	35"	29"	02429	0294297	0248	02948
018162948	2	8"	48"	16"	29"	02129	029129	0248	02948
018242948	3	8"	48"	24"	29"	02229	029229	0248	02948
018322948	4	8"	48"	32"	29"	02329	029329	0248	02948
018402948	5	8"	48"	40"	29"	02429	029429	0248	02948



The 72" Wide

- Elegant approach with full 72" wide step and 29" deep platform for use with sliding glass and french doors.
- Twin railings recommended.
- Enclosed back—suitable for side entry installations.
- Rails sold separately.

The 72" Wide

Part No.	Number Of Step	Riser Height	Width	Overall Height	Landing Depth	Standard Rail Part No.	Deluxe Rail Part No.
017142972	2	7"	72"	14"	29"	02129	029129
017212972	3	7"	72"	21"	29"	02229	029229
017282972	4	7"	72"	28"	29"	02329	029329
017352972	5	7"	72"	35"	29"	02429	0294297
018162972	2	8"	72"	16"	29"	02129	029129
018242972	3	8"	72"	24"	29"	02229	029229
018322972	4	8"	72"	32"	29"	02329	029329
018402972	5	8"	72"	40"	29"	02429	029429



The Platform Step

- Use this full 38" x 38" or the 38" x 48" landing with reversible railing when you prefer a parallel approach.
- Enclosed back-suitable for side entry installations.
- Rails sold separately.

The Platform Step

Part No.	Number Of Step	Riser Height	Width	Overall Height	Landing Depth	Standard Rail Part No.	Deluxe Rail Part No.	Standard Back Rail Part No.	Deluxe Back Rail Part No.
017143838	2	7"	38"	14"	38"	02138	029138	0238	02938
017213838	3	7"	38"	21"	38"	02238	029238	0238	02938
017283838	4	7"	38"	28"	38"	02338	029338	0238	02938
017353838	5	7"	38"	35"	38"	02538	0294387	0238	02938
017423838	6	7"	38"	42"	38"		0295387		02938
017493838	7	7"	38"	49"	38"		0296387		02938
018163838	2	8"	38"	16"	38"	02138	029138	0238	02938
018243838	3	8"	38"	24"	38"	02238	029238	0238	02938
018323838	4	8"	38"	32"	38"	02338	029338	0238	02938
018403838	5	8"	38"	40"	38"	02438	029438	0238	02938
018483838	6	8"	38"	48"	38"		029538		02938
017283848	4	7"	48"	28"	38"	02338	029338	0248	02948
017353848	5	7"	48"	35"	38"	02538	0294387	0248	02948
018163848	2	8"	48"	16"	38"	02138	029138	0248	02948
018243848	3	8"	48"	24"	38"	02238	029238	0248	02948
018323848	4	8"	48"	32"	38"	02338	029338	0248	02948
018403848	5	8"	48"	40"	38"	02438	029438	0248	02948



Economy Steps

- As space conscious as it is cost conscious.
- 32" wide with a 14" landing.
- Rails sold separately.

Economy Steps

Part No.	Number Of Step	Riser Height	Width	Overall Height	Landing Depth	Standard Rail Part No.
018161432	2	8"	32"	16"	14"	02114M
018241432	3	8"	32"	24"	14"	02214M
018321432	4	8"	32"	32"	14"	02314M



The "B" Series

- B series fiberglass steps.
- Open back with optional aluminum rails.
- Rails sold separately.

The "B" Series

Part No.	Number Of Step	Riser Height	Width	Overall Height	Landing Depth	Standard Rail Part No.	Standard Back Rail Part No.
017281836	4	7"	36"	28"	18"	02318	0236
018161036	2	8"	36"	16"	10"	02110	0236
018161836	2	8"	36"	16"	18"	02118	0236
018241036	3	8"	36"	24"	10"	02210	0236
018241836	3	8"	36"	24"	18"	02218	0236
018321036	4	8"	36"	32"	10"	02310	0236
018321836	4	8"	36"	32"	18"	02318	0236



Deluxe Rails



82005
Rail Cap Bumpers



8101175
Display Handle

82004 Rail Hardware Kit



82001 Back Rail Hardware Kit



Vinyl Siding

- Style Crest manufactures and distributes the .040 line of premium vinyl siding that delivers long lasting beauty and performance.
- Our .040 line features a deep embossed wood grain surface and a secure positive locking system for easy installation.
- Available in a variety of attractive colors.



.040 Double 4" Vinyl Siding



Part No.	Package Weight	Package Quantity Pieces	Package Quantity Squares	Square Ft. Coverage-Carton	Length	Width	Color
20D402	75.36	24	2	200	12'-6"	8"	White Birch
20D411	75.36	24	2	200	12'-6"	8"	Classic Sand
20D417	75.36	24	2	200	12'-6"	8"	Warm Sandalwood
20D422	75.36	24	2	200	12'-6"	8"	Sunny Maize
20D426	75.36	24	2	200	12'-6"	8"	Summer Wheat
20D441	75.36	24	2	200	12'-6"	8"	Soft Willow
20D443	75.36	24	2	200	12'-6"	8"	Pebble Clay
20D444	75.36	24	2	200	12'-6"	8"	Harbor Stone
20D446	75.36	24	2	200	12'-6"	8"	Basket Beige
20D447	75.36	24	2	200	12'-6"	8"	Slate Blue
20D449	75.36	24	2	200	12'-6"	8"	Graphite Grey
20D452	75.36	24	2	200	12'-6"	8"	Java
20D479	75.36	24	2	200	12'-6"	8"	Seagrass
20D482	75.36	24	2	200	12'-6"	8"	Meadow

.040 Dutchlap 4.5" Vinyl Siding



Part No.	Package Weight	Package Quantity Pieces	Package Quantity Squares	Square Ft. Coverage-Carton	Length	Width	Color
20DL4502	72.4	22	2	200	12' 1"	9"	White Birch
20DL4511	72.4	22	2	200	12' 1"	9"	Classic Sand
20DL4517	72.4	22	2	200	12' 1"	9"	Warm Sandalwood
20DL4522	72.4	22	2	200	12' 1"	9"	Sunny Maize
20DL4526	72.4	22	2	200	12' 1"	9"	Summer Wheat
20DL4541	72.4	22	2	200	12' 1"	9"	Soft Willow
20DL4543	72.4	22	2	200	12' 1"	9"	Pebble Clay
20DL4544	72.4	22	2	200	12' 1"	9"	Harbor Stone
20DL4546	72.4	22	2	200	12' 1"	9"	Basket Beige
20DL4547	72.4	22	2	200	12' 1"	9"	Slate Blue
20DL4549	72.4	22	2	200	12' 1"	9"	Graphite Grey
20DL4552	72.4	22	2	200	12' 1"	9"	Java
20DL4579	72.4	22	2	200	12' 1"	9"	Seagrass
20DL4582	72.4	22	2	200	12' 1"	9"	Meadow

Exterior Products

.040 Dutchlap 5" Vinyl Siding



Part No.	Package Weight	Package Quantity Pieces	Package Quantity Squares	Square Ft. Coverage-Carton	Length	Width	Color
20DL502	83.1	20	2	200	12'	10"	White Birch
20DL511	83.1	20	2	200	12'	10"	Classic Sand
20DL517	83.1	20	2	200	12'	10"	Warm Sandalwood
20DL522	83.1	20	2	200	12'	10"	Sunny Maize
20DL526	83.1	20	2	200	12'	10"	Summer Wheat
20DL541	83.1	20	2	200	12'	10"	Soft Willow
20DL543	83.1	20	2	200	12'	10"	Pebble Clay
20DL544	83.1	20	2	200	12'	10"	Harbor Stone
20DL546	83.1	20	2	200	12'	10"	Basket Beige
20DL547	83.1	20	2	200	12'	10"	Slate Blue
20DL549	83.1	20	2	200	12'	10"	Graphite Grey
20DL552	83.1	20	2	200	12'	10"	Java
20DL579	83.1	20	2	200	12'	10"	Seagrass
20DL582	83.1	20	2	200	12'	10"	Meadow

.040 D5 Solid Soffit



Part No.	Package Weight	Package Quantity Pieces	Package Quantity Squares	Square Ft. Coverage-Carton	Length	Width	Color
32DS10SD02	76.9	20	2	200	12'	10"	White Birch
32DS10SD11	76.9	20	2	200	12'	10"	Classic Sand
32DS10SD17	76.9	20	2	200	12'	10"	Warm Sandalwood
32DS10SD22	76.9	20	2	200	12'	10"	Sunny Maize
32DS10SD43	76.9	20	2	200	12'	10"	Pebble Clay
32DS10SD44	76.9	20	2	200	12'	10"	Harbor Stone
32DS10SD46	76.9	20	2	200	12'	10"	Basket Beige
32DS10SD49	76.9	20	2	200	12'	10"	Graphite Grey
32DS10SD83	76.9	20	2	200	12'	10"	Midnight
32DS10SD98	76.9	20	2	200	12'	10"	Musket Brown

.040 D5 Vented Soffit



Part No.	Package Weight	Package Quantity Pieces	Package Quantity Squares	Square Ft. Coverage-Carton	Length	Width	Color
32DS10VT02	72.9	20	2	200	12'	10"	White Birch
32DS10VT11	72.9	20	2	200	12'	10"	Classic Sand
32DS10VT17	72.9	20	2	200	12'	10"	Warm Sandalwood
32DS10VT22	72.9	20	2	200	12'	10"	Sunny Maize
32DS10VT43	72.9	20	2	200	12'	10"	Pebble Clay
32DS10VT44	72.9	20	2	200	12'	10"	Harbor Stone
32DS10VT46	72.9	20	2	200	12'	10"	Basket Beige
32DS10VT49	72.9	20	2	200	12'	10"	Graphite Grey
32DS10VT83	72.9	20	2	200	12'	10"	Midnight
32DS10VT98	72.9	20	2	200	12'	10"	Musket Brown

T4 Solid Soffit



Part No.	Package Weight	Package Quantity Pieces	Square Ft. Coverage-Carton	Length	Width	Color
32DS12SD02	79.6	16	192	12'	12"	White Birch
32DS12SD11	79.6	16	192	12'	12"	Classic Sand
32DS12SD17	79.6	16	192	12'	12"	Warm Sandalwood
32DS12SD22	79.6	16	192	12'	12"	Sunny Maize
32DS12SD26	79.6	16	192	12'	12"	Summer Wheat
32DS12SD41	79.6	16	192	12'	12"	Soft Willow
32DS12SD43	79.6	16	192	12'	12"	Pebble Clay
32DS12SD44	79.6	16	192	12'	12"	Harbor Stone
32DS12SD46	79.6	16	192	12'	12"	Basket Beige
32DS12SD47	79.6	16	192	12'	12"	Slate Blue
32DS12SD49	79.6	16	192	12'	12"	Graphite Grey
32DS12SD52	79.6	16	192	12'	12"	Java
32DS12SD79	79.6	16	192	12'	12"	Seagrass
32DS12SD82	79.6	16	192	12'	12"	Meadow
32DS12SD98	79.6	16	192	12'	12"	Musket Brown

T4 Vented Soffit



Part No.	Package Weight	Package Quantity Pieces	Square Ft. Coverage-Carton	Length	Width	Color
32DS12VT02	76.4	16	192	12'	12"	White Birch
32DS12VT11	76.4	16	192	12'	12"	Classic Sand
32DS12VT17	76.4	16	192	12'	12"	Warm Sandalwood
32DS12VT22	76.4	16	192	12'	12"	Sunny Maize
32DS12VT26	76.4	16	192	12'	12"	Summer Wheat
32DS12VT41	76.4	16	192	12'	12"	Soft Willow
32DS12VT43	76.4	16	192	12'	12"	Pebble Clay
32DS12VT44	76.4	16	192	12'	12"	Harbor Stone
32DS12VT46	76.4	16	192	12'	12"	Basket Beige
32DS12VT47	76.4	16	192	12'	12"	Slate Blue
32DS12VT49	76.4	16	192	12'	12"	Graphite Grey
32DS12VT52	76.4	16	192	12'	12"	Java
32DS12VT79	76.4	16	192	12'	12"	Seagrass
32DS12VT82	76.4	16	192	12'	12"	Meadow
32DS12VT98	76.4	16	192	12'	12"	Musket Brown

.038 D5 Solid Soffit



Part No.	Package Weight	Package Quantity Pieces	Package Quantity Squares	Square Ft. Coverage-Carton	Length	Width	Color
32US10SD02	76.9	20	2	200	12'	10"	White Birch

.038 D5 Vented Soffit



Part No.	Package Weight	Package Quantity Pieces	Package Quantity Squares	Square Ft. Coverage-Carton	Length	Width	Color
32US10VT02	72.9	20	2	200	12'	10"	White Birch

Exterior Products

T4 Solid Soffit



Part No.	Package Weight	Package Quantity Pieces	Square Ft. Coverage-Carton	Length	Width	Color
32US12SD02	76.9	16	192	12'	12"	White Birch

T4 Vented Soffit



Part No.	Package Weight	Package Quantity Pieces	Square Ft. Coverage-Carton	Length	Width	Color
32US12VT02	73.9	16	192	12'	12"	White Birch

T4 Center Vent Soffit



Part No.	Package Weight	Package Quantity Pieces	Square Ft. Coverage-Carton	Length	Width	Color
32DS12CV02	78.6	16	192	12'	12"	White Birch
32DS12CV17	78.6	16	192	12'	12"	Warm Sandalwood
32DS12CV43	78.6	16	192	12'	12"	Pebble Clay
32DS12CV98	78.6	16	192	12'	12"	Musket Brown

Double Utility Trim



Part No.	Package Weight	Package Quantity Pieces	Linear Ft. Carton	Length	Color
39535802	38	25	312.5	12'6"	White Birch
39535817	38	25	312.5	12'6"	Warm Sandalwood
39535826	38	25	312.5	12'6"	Summer Wheat
39535843	38	25	312.5	12'6"	Pebble Clay
39535844	38	25	312.5	12'6"	Harbor Stone
39535847	38	25	312.5	12'6"	Slate Blue
39535849	38	25	312.5	12'6"	Graphite Grey
39535861	38	25	312.5	12'6"	Arison Clay
39535879	38	25	312.5	12'6"	Seagrass
39535886	38	25	312.5	12'6"	Nutmeg

3" Outside Corner



Part No.	Package Weight	Package Quantity Pieces	Linear Ft. Carton	Length	Width	Color
39AC30002	38.5	10	100	10'	3"	White Birch
39AC30011	38.5	10	100	10'	3"	Classic Sand
39AC30017	38.5	10	100	10'	3"	Warm Sandalwood
39AC30022	38.5	10	100	10'	3"	Sunny Maize
39AC30026	38.5	10	100	10'	3"	Summer Wheat
39AC30041	38.5	10	100	10'	3"	Soft Willow
39AC30043	38.5	10	100	10'	3"	Pebble Clay
39AC30044	38.5	10	100	10'	3"	Harbor Stone
39AC30046	38.5	10	100	10'	3"	Basket Beige
39AC30047	38.5	10	100	10'	3"	Slate Blue
39AC30049	38.5	10	100	10'	3"	Graphite Grey
39AC30052	38.5	10	100	10'	3"	Java
39AC30079	38.5	10	100	10'	3"	Seagrass
39AC30082	38.5	10	100	10'	3"	Meadow

Finish Trim



Part No.	Package Weight	Package Quantity Pieces	Linear Ft. Carton	Length	Color
39AC32202	49.9	40	500	12'6"	White Birch
39AC32211	49.9	40	500	12'6"	Classic Sand
39AC32217	49.9	40	500	12'6"	Warm Sandalwood
39AC32222	49.9	40	500	12'6"	Sunny Maize
39AC32226	49.9	40	500	12'6"	Summer Wheat
39AC32241	49.9	40	500	12'6"	Soft Willow
39AC32243	49.9	40	500	12'6"	Pebble Clay
39AC32244	49.9	40	500	12'6"	Harbor Stone
39AC32246	49.9	40	500	12'6"	Basket Beige
39AC32247	49.9	40	500	12'6"	Slate Blue
39AC32249	49.9	40	500	12'6"	Graphite Grey
39AC32252	49.9	40	500	12'6"	Java
39AC32279	49.9	40	500	12'6"	Seagrass
39AC32282	49.9	40	500	12'6"	Meadow

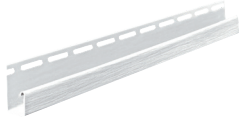
Inside Corner Post



Part No.	Package Weight	Package Quantity Pieces	Linear Ft. Carton	Length	Color
39AC32502	23.7	10	100	10'	White Birch
39AC32511	23.7	10	100	10'	Classic Sand
39AC32517	23.7	10	100	10'	Warm Sandalwood
39AC32522	23.7	10	100	10'	Sunny Maize
39AC32526	23.7	10	100	10'	Summer Wheat
39AC32541	23.7	10	100	10'	Soft Willow
39AC32543	23.7	10	100	10'	Pebble Clay
39AC32544	23.7	10	100	10'	Harbor Stone
39AC32546	23.7	10	100	10'	Basket Beige
39AC32547	23.7	10	100	10'	Slate Blue
39AC32549	23.7	10	100	10'	Graphite Grey
39AC32552	23.7	10	100	10'	Java
39AC32579	23.7	10	100	10'	Seagrass
39AC32582	23.7	10	100	10'	Meadow

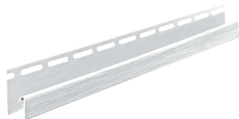
Exterior Products

3/8" J-Channel - 1" Face



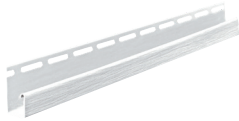
Part No.	Package Weight	Package Quantity Pieces	Linear Ft. Carton	Length	Color
39AC33302	50	40	500	12'6"	White Birch

1/2" J-Channel - 1" Face



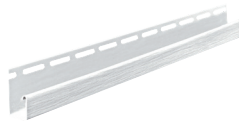
Part No.	Package Weight	Package Quantity Pieces	Linear Ft. Carton	Length	Color
39AC35502	56.1	40	500	12'6"	White Birch
39AC35511	56.1	40	500	12'6"	Classic Sand
39AC35517	56.1	40	500	12'6"	Warm Sandalwood
39AC35522	56.1	40	500	12'6"	Sunny Maize
39AC35526	56.1	40	500	12'6"	Summer Wheat
39AC35541	56.1	40	500	12'6"	Soft Willow
39AC35543	56.1	40	500	12'6"	Pebble Clay
39AC35544	56.1	40	500	12'6"	Harbor Stone
39AC35546	56.1	40	500	12'6"	Basket Beige
39AC35547	56.1	40	500	12'6"	Slate Blue
39AC35549	56.1	40	500	12'6"	Graphite Grey
39AC35552	56.1	40	500	12'6"	Java
39AC35579	56.1	40	500	12'6"	Seagrass
39AC35582	56.1	40	500	12'6"	Meadow
39AC35598	56.1	40	500	12'6"	Musket Brown

5/8" J-Channel - 1" Face



Part No.	Package Weight	Package Quantity Pieces	Linear Ft. Carton	Length	Color
39AC38802	48.5	40	500	12'6"	White Birch
39AC38811	48.5	40	500	12'6"	Classic Sand
39AC38817	48.5	40	500	12'6"	Warm Sandalwood
39AC38822	48.5	40	500	12'6"	Sunny Maize
39AC38826	48.5	40	500	12'6"	Summer Wheat
39AC38841	48.5	40	500	12'6"	Soft Willow
39AC38843	48.5	40	500	12'6"	Pebble Clay
39AC38844	48.5	40	500	12'6"	Harbor Stone
39AC38846	48.5	40	500	12'6"	Basket Beige
39AC38847	48.5	40	500	12'6"	Slate Blue
39AC38849	48.5	40	500	12'6"	Graphite Grey
39AC38852	48.5	40	500	12'6"	Java
39AC38879	48.5	40	500	12'6"	Seagrass
39AC38882	48.5	40	500	12'6"	Meadow

3/4" J-Channel - 1" Face



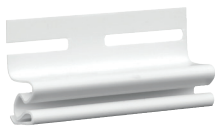
Part No.	Package Weight	Package Quantity Pieces	Linear Ft. Carton	Length	Color
39AC56641	46.4	40	500	12'6"	Soft Willow
39AC56643	46.4	40	500	12'6"	Pebble Clay
39AC56646	46.4	40	500	12'6"	Basket Beige
39AC56647	46.4	40	500	12'6"	Slate Blue
39AC56649	46.4	40	500	12'6"	Graphite Grey
39AC56652	46.4	40	500	12'6"	Java
39AC56679	46.4	40	500	12'6"	Seagrass
39AC56682	46.4	40	500	12'6"	Meadow

Frieze Runner - F Channel



Part No.	Package Weight	Package Quantity Pieces	Linear Ft. Carton	Length	Color
39AC34402	24.8	20	250	12'6"	White Birch
39AC34411	24.8	20	250	12'6"	Classic Sand
39AC34417	24.8	20	250	12'6"	Warm Sandalwood
39AC34422	24.8	20	250	12'6"	Sunny Maize
39AC34426	24.8	20	250	12'6"	Summer Wheat
39AC34441	24.8	20	250	12'6"	Soft Willow
39AC34443	24.8	20	250	12'6"	Pebble Clay
39AC34444	24.8	20	250	12'6"	Harbor Stone
39AC34446	24.8	20	250	12'6"	Basket Beige
39AC34447	24.8	20	250	12'6"	Slate Blue
39AC34449	24.8	20	250	12'6"	Graphite Grey
39AC34452	24.8	20	250	12'6"	Java
39AC34479	24.8	20	250	12'6"	Seagrass
39AC34482	24.8	20	250	12'6"	Meadow
39AC34498	24.8	20	250	12'6"	Musket Brown

Crown Moulding - Retainer



Part No.	Package Weight	Package Quantity Pieces	Linear Ft. Carton	Length	Color
39CMB02	24	20	250	12'6"	White Birch

Exterior Products

Crown Moulding - Front



Part No.	Package Weight	Package Quantity Pieces	Linear Ft. Carton	Length	Color
39CMFT02	32.85	24	300	12'6"	White Birch

Crown Moulding Front with F Channel



Part No.	Package Weight	Package Quantity Pieces	Linear Ft. Carton	Length	Color
39CM02	42.67	24	300	12'6"	White Birch

Soffit Crown Moulding Back with F Channel



Part No.	Package Weight	Package Quantity Pieces	Linear Ft. Carton	Length	Color
39CMBF02	31.78	20	250	12'6"	White Birch

6-1/2" Vinyl Fascia



Part No.	Package Weight	Package Quantity Pieces	Linear Ft. Carton	Length	Width	Color
39FC61202	77.22	36	360	10'	6-1/2"	White Birch

Aluminum Starter Strip



Part No.	Package Weight	Package Quantity Pieces	Linear Ft. Carton	Length	Width
39STR	30	50	500	10'	2-1/2"

Wide J-Casing 2-1/2" Face with 3/4" Receiver



Part No.	Package Weight	Package Quantity Pieces	Linear Ft. Carton	Length	Color
39AC31102	53	24	300	12'6"	White Birch

Window/Door Moulding



Part No.	Package Weight	Package Quantity Pieces	Linear Ft. Carton	Length	Width	Color
39WM1202	47.8	24	300	12'6"	1-1/2" Face	White Birch
39WM802	30	24	192	8'	1-1/2" Face	

NOVIK Dryer Vent


Part No.	Width	Height	Color
39DV02	7.6"	8.4"	White Birch
39DV11	7.6"	8.4"	Classic Sand
39DV17	7.6"	8.4"	Warm Sandalwood
39DV22	7.6"	8.4"	Sunny Maize
39DV26	7.6"	8.4"	Summer Wheat
39DV41	7.6"	8.4"	Soft Willow
39DV43	7.6"	8.4"	Pebble Clay
39DV44	7.6"	8.4"	Harbor Stone
39DV46	7.6"	8.4"	Basket Beige
39DV47	7.6"	8.4"	Slate Blue
39DV49	7.6"	8.4"	Graphite Grey
39DV52	7.6"	8.4"	Java
39DV61	7.6"	8.4"	Artisan Clay
39DV79	7.6"	8.4"	Seagrass
39DV80	7.6"	8.4"	Twilight
39DV81	7.6"	8.4"	Canyon Brown
39DV82	7.6"	8.4"	Meadow
39DV85	7.6"	8.4"	Keystone
39DV87	7.6"	8.4"	Heritage Red
39DV89	7.6"	8.4"	Hampton Blue
39DV90	7.6"	8.4"	Grey Flannel
39DV91	7.6"	8.4"	Coffee Bean
39DV92	7.6"	8.4"	Onyx
39DV93	7.6"	8.4"	American Cedar
39DV94	7.6"	8.4"	Mountain Pine
39DV96	7.6"	8.4"	Blue Ridge
39DV97	7.6"	8.4"	Woodland

NOVIK Intake Exhaust Vent


Part No.	Width	Height	Color
39IE02	6.5"	6.5"	White Birch
39IE11	6.5"	6.5"	Classic Sand
39IE17	6.5"	6.5"	Warm Sandalwood
39IE43	6.5"	6.5"	Pebble Clay
39IE44	6.5"	6.5"	Harbor Stone
39IE49	6.5"	6.5"	Graphite Grey
39IE81	6.5"	6.5"	Canyon Brown
39IE90	6.5"	6.5"	Grey Flannel
39IE92	6.5"	6.5"	Onyx
39IE96	6.5"	6.5"	Blue Ridge

NOVIK Meter Base


Part No.	Width	Height	Color
39MB02	13.1"	13.1"	White Birch

Exterior Products

NOVIK Standard Mount



Part No.	Width	Height	Color
39SM02	7.6"	8.4"	White Birch
39SM11	7.6"	8.4"	Classic Sand
39SM17	7.6"	8.4"	Warm Sandalwood
39SM22	7.6"	8.4"	Sunny Maize
39SM26	7.6"	8.4"	Summer Wheat
39SM41	7.6"	8.4"	Soft Willow
39SM43	7.6"	8.4"	Pebble Clay
39SM44	7.6"	8.4"	Harbor Stone
39SM46	7.6"	8.4"	Basket Beige
39SM47	7.6"	8.4"	Slate Blue
39SM49	7.6"	8.4"	Graphite Grey
39SM51	7.6"	8.4"	Topaz
39SM52	7.6"	8.4"	Java
39SM61	7.6"	8.4"	Artisan Clay
39SM79	7.6"	8.4"	Seagrass
39SM80	7.6"	8.4"	Twilight
39SM81	7.6"	8.4"	Canyon Brown
39SM82	7.6"	8.4"	Meadow
39SM85	7.6"	8.4"	Keystone
39SM86	7.6"	8.4"	Nutmeg
39SM87	7.6"	8.4"	Heritage Red
39SM89	7.6"	8.4"	Hampton Blue
39SM90	7.6"	8.4"	Grey Flannel
39SM91	7.6"	8.4"	Coffee Bean
39SM92	7.6"	8.4"	Onyx
39SM93	7.6"	8.4"	American Cedar
39SM94	7.6"	8.4"	Mountain Pine
39SM96	7.6"	8.4"	Blue Ridge
39SM97	7.6"	8.4"	Woodland

NOVIK Large Mount



Part No.	Width	Height	Color
39LM02	8.6"	12.6"	White Birch
39LM11	8.6"	12.6"	Classic Sand
39LM17	8.6"	12.6"	Warm Sandalwood
39LM22	8.6"	12.6"	Sunny Maize
39LM26	8.6"	12.6"	Summer Wheat
39LM41	8.6"	12.6"	Soft Willow
39LM43	8.6"	12.6"	Pebble Clay
39LM44	8.6"	12.6"	Harbor Stone
39LM46	8.6"	12.6"	Basket Beige
39LM49	8.6"	12.6"	Graphite Grey
39LM61	8.6"	12.6"	Artisan Clay
39LM80	8.6"	12.6"	Twilight
39LM81	8.6"	12.6"	Canyon Brown
39LM82	8.6"	12.6"	Meadow
39LM85	8.6"	12.6"	Keystone
39LM86	8.6"	12.6"	Nutmeg
39LM89	8.6"	12.6"	Hampton Blue
39LM90	8.6"	12.6"	Grey Flannel
39LM91	8.6"	12.6"	Coffee Bean
39LM92	8.6"	12.6"	Onyx
39LM93	8.6"	12.6"	American Cedar
39LM94	8.6"	12.6"	Mountain Pine
39LM96	8.6"	12.6"	Blue Ridge

NOVIK Mini Mount



Part No.	Width	Height	Color
39MM02	5.9"	7.6"	White Birch
39MM17	5.9"	7.6"	Warm Sandalwood
39MM22	5.9"	7.6"	Sunny Maize
39MM41	5.9"	7.6"	Soft Willow
39MM43	5.9"	7.6"	Pebble Clay
39MM44	5.9"	7.6"	Harbor Stone
39MM46	5.9"	7.6"	Basket Beige
39MM47	5.9"	7.6"	Slate Blue
39MM49	5.9"	7.6"	Graphite Grey
39MM52	5.9"	7.6"	Java
39MM61	5.9"	7.6"	Artisan Clay
39MM79	5.9"	7.6"	Seagrass
39MM80	5.9"	7.6"	Twilight
39MM81	5.9"	7.6"	Canyon Brown
39MM82	5.9"	7.6"	Meadow
39MM85	5.9"	7.6"	Keystone
39MM87	5.9"	7.6"	Heritage Red
39MM89	5.9"	7.6"	Hampton Blue
39MM90	5.9"	7.6"	Grey Flannel
39MM91	5.9"	7.6"	Coffee Bean
39MM92	5.9"	7.6"	Onyx
39MM93	5.9"	7.6"	American Cedar
39MM94	5.9"	7.6"	Mountain Pine
39MM96	5.9"	7.6"	Blue Ridge
39MM97	5.9"	7.6"	Woodland

NOVIK Rectangular Vent



Part No.	Width	Height	Color
39GV182402	18"	24"	White Birch
39GV121802	12"	18"	White Birch
39GV121817	12"	18"	Warm Sandalwood
39GV121843	12"	18"	Pebble Clay
39GV121844	12"	18"	Harbor Stone

NOVIK Square Vent



Part No.	Width	Height	Color
39GV121202	12"	12"	White Birch

Exterior Products

NOVIK Recessed Split Mount Block



Part No.	Width	Height	Color
39RS02	5.9"	7.6"	White Birch
39RS11	5.9"	7.6"	Classic Sand
39RS17	5.9"	7.6"	Warm Sandalwood
39RS22	5.9"	7.6"	Sunny Maize
39RS26	5.9"	7.6"	Summer Wheat
39RS41	5.9"	7.6"	Soft Willow
39RS43	5.9"	7.6"	Pebble Clay
39RS44	5.9"	7.6"	Harbor Stone
39RS46	5.9"	7.6"	Basket Beige
39RS47	5.9"	7.6"	Slate Blue
39RS49	5.9"	7.6"	Graphite Grey
39RS52	5.9"	7.6"	Java
39RS61	5.9"	7.6"	Artisan Clay
39RS79	5.9"	7.6"	Seagrass
39RS80	5.9"	7.6"	Twilight
39RS81	5.9"	7.6"	Canyon Brown
39RS82	5.9"	7.6"	Meadow
39RS85	5.9"	7.6"	Keystone
39RS86	5.9"	7.6"	Nutmeg
39RS87	5.9"	7.6"	Heritage Red
39RS89	5.9"	7.6"	Hampton Blue
39RS90	5.9"	7.6"	Grey Flannel
39RS91	5.9"	7.6"	Coffee Bean
39RS92	5.9"	7.6"	Onyx
39RS93	5.9"	7.6"	American Cedar
39RS94	5.9"	7.6"	Mountain Pine
39RS96	5.9"	7.6"	Blue Ridge
39RS97	5.9"	7.6"	Woodland

NOVIK Octagonal Vent



Part No.	Width	Height	Color
39GV16OCT02	16"	16"	White Birch
39GV16OCT11	16"	16"	Classic Sand
39GV16OCT43	16"	16"	Pebble Clay
39GV16OCT46	16"	16"	Basket Beige
39GV16OCT49	16"	16"	Graphite Grey
39GV16OCT51	16"	16"	Topaz
39GV16OCT52	16"	16"	Java
39GV16OCT61	16"	16"	Artisan Clay
39GV16OCT80	16"	16"	Twilight
39GV16OCT82	16"	16"	Meadow
39GV16OCT87	16"	16"	Heritage Red
39GV16OCT89	16"	16"	Hampton Blue
39GV16OCT90	16"	16"	Grey Flannel
39GV16OCT91	16"	16"	Coffee Bean
39GV16OCT92	16"	16"	Onyx
39GV16OCT94	16"	16"	Mountain Pine

NOVIK Electrical Box Insert



Part No.	Width	Height
39ELCINSRT	4.5"	5.5"

Traditional Open Louvered Shutter



Traditional Open Louvered 12" Wide Shutter

Part No.	Berry	Black	Blue	Bordeaux	Brown	Chocolate	Cran	Gray	Green	Indigo	Paintable ¹	Pine	Red	Royal	Sandstone	White
39L312028_	330	50	33	90	35	22	44	410	490	610	990	46	51	49	730	930
39L312031_	330	50	33	90	35	22	44	410	490	610	990	46	51	49	730	930
39L312035_	330	50	33	90	35	22	44	410	490	610	990	46	51	49	730	930
39L312039_	330	50	33	90	35	22	44	410	490	610	990	46	51	49	730	930
39L312043_	330	50	33	90	35	22	44	410	490	610	990	46	51	49	730	930
39L312047_	330	50	33	90	35	22	44	410	490	610	990	46	51	49	730	930
39L312051_	330	50	33	90	35	22	44	410	490	610	990	46	51	49	730	930
39L312055_	330	50	33	90	35	22	44	410	490	610	990	46	51	49	730	930
39L312060_	330	50	33	90	35	22	44	410	490	610	990	46	51	49	730	930
39L312064_	330	50	33	90	35	22	44	410	490	610	990	46	51	49	730	930
39L312067_	330	50	33	90	35	22	44	410	490	610	990	46	51	49	730	930
39L312071_	330	50	33	90	35	22	44	410	490	610	990	46	51	49	730	930

Traditional Open Louvered 14-1/2" Wide Shutter

39VBL15x25_	BE	BL	BU	BO	BR	CH	CB	GY	GR	IB	-	PN	RD	RO	SA	WH
39VBL15x31_	BE	BL	BU	BO	BR	CH	CB	GY	GR	IB	-	PN	RD	RO	SA	WH
39VBL15x35_	BE	BL	BU	BO	BR	CH	CB	GY	GR	IB	-	PN	RD	RO	SA	WH
39VBL15x39_	BE	BL	BU	BO	BR	CH	CB	GY	GR	IB	-	PN	RD	RO	SA	WH
39VBL15x43_	BE	BL	BU	BO	BR	CH	CB	GY	GR	IB	-	PN	RD	RO	SA	WH
39VBL15x47_	BE	BL	BU	BO	BR	CH	CB	GY	GR	IB	-	PN	RD	RO	SA	WH
39VBL15x51_	BE	BL	BU	BO	BR	CH	CB	GY	GR	IB	-	PN	RD	RO	SA	WH
39VBL15x55_	BE	BL	BU	BO	BR	CH	CB	GY	GR	IB	-	PN	RD	RO	SA	WH
39VBL15x59_	BE	BL	BU	BO	BR	CH	CB	GY	GR	IB	-	PN	RD	RO	SA	WH
39VBL15x63_	BE	BL	BU	BO	BR	CH	CB	GY	GR	IB	-	PN	RD	RO	SA	WH
39VBL15x67_	BE	BL	BU	BO	BR	CH	CB	GY	GR	IB	-	PN	RD	RO	SA	WH
39VBL15x71_	BE	BL	BU	BO	BR	CH	CB	GY	GR	IB	-	PN	RD	RO	SA	WH
39VBL15x75_	BE	BL	BU	BO	BR	CH	CB	GY	GR	IB	-	PN	RD	RO	SA	WH
39VBL15x81_	BE	BL	BU	BO	BR	CH	CB	GY	GR	IB	-	PN	RD	RO	SA	WH

Colonial Raised Panel Wide Shutter

- Color is throughout and will not scratch peel or fade.
- Perrenia Shutters are backed with a Limited Lifetime Warranty.
- All lengths and widths are nominal, boxed in pairs and include a fastening system of: 12 each 3" screws, 12 each color matched SnapCaps™ and 12 each color matched shutter spikes.



Colonial Raised Panel 12" Wide Shutter

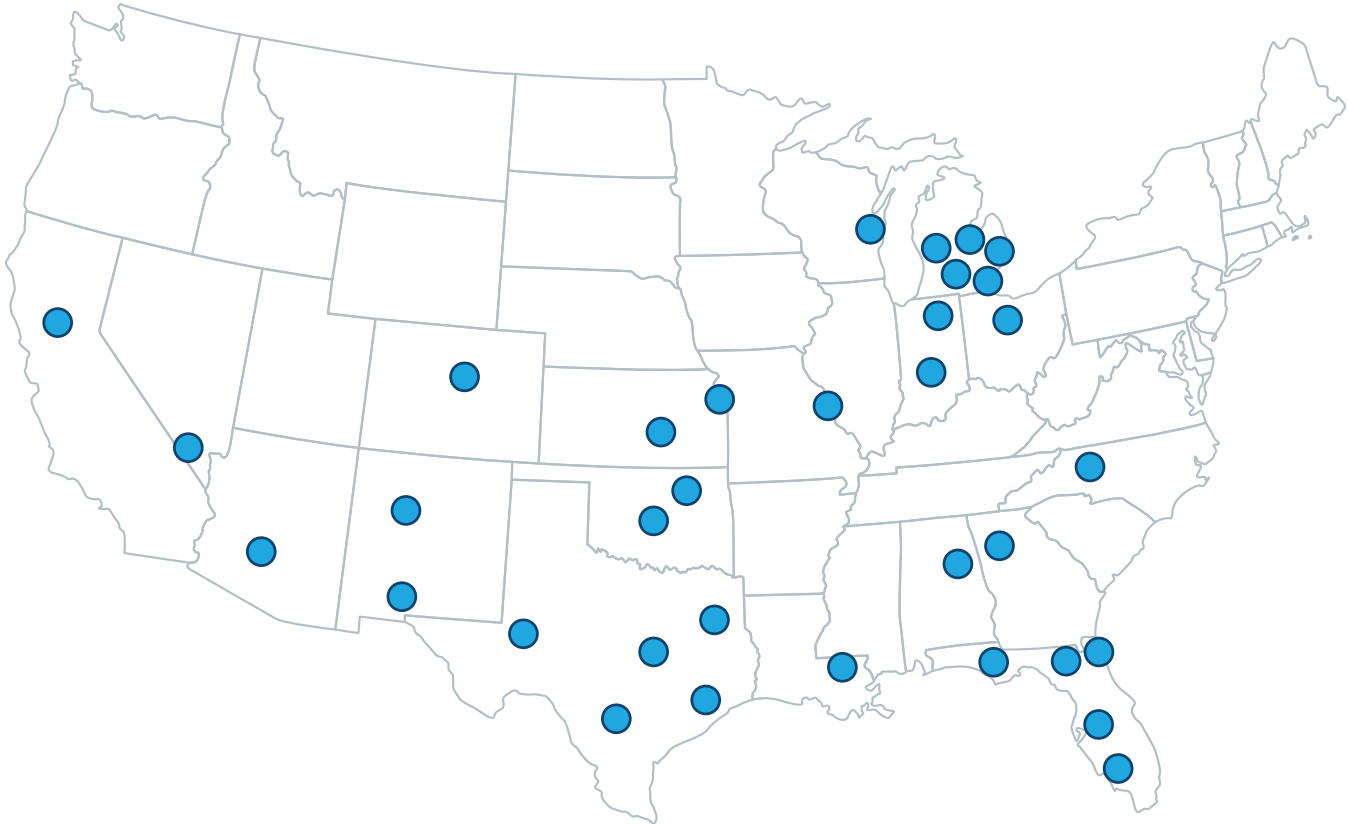
Part No.	Berry	Black	Blue	Bordeaux	Brown	Chocolate	Cran	Gray	Green	Indigo	Paintable ¹	Pine	Red	Royal	Sandstone	White
39R512028_ _ _	330	50	33	90	35	22	44	410	490	610	990	46	51	49	730	930
39R512031_ _ _	330	50	33	90	35	22	44	410	490	610	990	46	51	49	730	930
39R512035_ _ _	330	50	33	90	35	22	44	410	490	610	990	46	51	49	730	930
39R512039_ _ _	330	50	33	90	35	22	44	410	490	610	990	46	51	49	730	930
39R512043_ _ _	330	50	33	90	35	22	44	410	490	610	990	46	51	49	730	930
39R512047_ _ _	330	50	33	90	35	22	44	410	490	610	990	46	51	49	730	930
39R512051_ _ _	330	50	33	90	35	22	44	410	490	610	990	46	51	49	730	930
39R512055_ _ _	330	50	33	90	35	22	44	410	490	610	990	46	51	49	730	930
39R512060_ _ _	330	50	33	90	35	22	44	410	490	610	990	46	51	49	730	930
39R512064_ _ _	330	50	33	90	35	22	44	410	490	610	990	46	51	49	730	930
39R512067_ _ _	330	50	33	90	35	22	44	410	490	610	990	46	51	49	730	930
39R512071_ _ _	330	50	33	90	35	22	44	410	490	610	990	46	51	49	730	930

Colonial Raised Panel 14-1/2" Wide Shutter

39VBLR31_ _	BE	BL	BU	BO	BR	CH	CB	GY	GR	IB	-	PN	RD	RO	SA	WH
39VBLR35_ _	BE	BL	BU	BO	BR	CH	CB	GY	GR	IB	-	PN	RD	RO	SA	WH
39VBLR39_ _	BE	BL	BU	BO	BR	CH	CB	GY	GR	IB	-	PN	RD	RO	SA	WH
39VBLR43_ _	BE	BL	BU	BO	BR	CH	CB	GY	GR	IB	-	PN	RD	RO	SA	WH
39VBLR47_ _	BE	BL	BU	BO	BR	CH	CB	GY	GR	IB	-	PN	RD	RO	SA	WH
39VBLR51_ _	BE	BL	BU	BO	BR	CH	CB	GY	GR	IB	-	PN	RD	RO	SA	WH
39VBLR55_ _	BE	BL	BU	BO	BR	CH	CB	GY	GR	IB	-	PN	RD	RO	SA	WH
39VBLR59_ _	BE	BL	BU	BO	BR	CH	CB	GY	GR	IB	-	PN	RD	RO	SA	WH
39VBLR63_ _	BE	BL	BU	BO	BR	CH	CB	GY	GR	IB	-	PN	RD	RO	SA	WH
39VBLR67_ _	BE	BL	BU	BO	BR	CH	CB	GY	GR	IB	-	PN	RD	RO	SA	WH
39VBLR71_ _	BE	BL	BU	BO	BR	CH	CB	GY	GR	IB	-	PN	RD	RO	SA	WH
39VBLR75_ _	BE	BL	BU	BO	BR	CH	CB	GY	GR	IB	-	PN	RD	RO	SA	WH
39VBLR81_ _	BE	BL	BU	BO	BR	CH	CB	GY	GR	IB	-	PN	RD	RO	SA	WH



is Nationwide



ALBUQUERQUE, NM · ATLANTA, GA · CHESTERFIELD, MI · DENVER, CO · FENTON, MO · FLINT, MI
 FOND DU LAC, WI · FORT MYERS, FL · FREMONT, OH · FT. WORTH, TX · GOSHEN, IN · GRAND RAPIDS, MI
 HAMMOND, LA · HOUSTON, TX · INDIANAPOLIS, IN · JACKSONVILLE, FL · LAKE CITY, FL · LAKELAND, FL · LANSING, MI
 LAS CRUCES, NM · LAS VEGAS, NV · LENEXA, KS · ODESSA, TX · OKLAHOMA CITY, OK
 PANAMA CITY, FL · PHOENIX, AZ · ROMULUS, MI · SACRAMENTO, CA · SAN ANTONIO, TX · TALLADEGA, AL
 TAYLOR, MI · TULSA, OK · TYLER, TX · WACO, TX · WICHITA, KS · WINSTON-SALEM, NC



www.stylecrestinc.com | 800.945.4440

