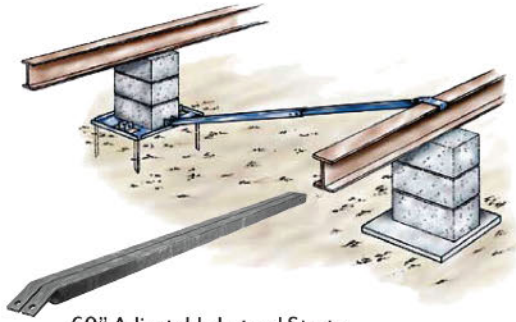


Secure a Manufactured Home

LLBS Lateral Ground Kits



60" Adjustable Lateral Struts

- (2) 1-1/2" sq. x 60" Galvanized Steel Outer/Lower Tubes
- (2) 1-1/4" sq. x 60" Galvanized Steel Inner/Upper Tubes

OR

72" Adjustable Lateral Struts

- (2) 1-1/2" sq. x 72" Galvanized Steel Outer/Lower Tubes
- (2) 1-1/4" sq. x 72" Galvanized Steel Inner/Upper Tubes



Lateral Struts Hardware

- (2) 2" x 7-3/4" Lateral (Top) Beam Clips
- (2) 1-5/8" x 2" Tube Clips
- (2) 1/2" x 1-3/8" Washers
- (4) 1/2" x 2-1/2" Carriage Bolts & Nuts
- (2) 1/2" x 1-1/2" Carriage Bolts & Nuts
- (8) 1/4" x 3/4" Self Drilling Screws

System Diagram for reference only,
not all parts shown are included.

141199003 (2) 72in Telescoping (Inner & Outer) Lateral Struts with Ground Hardware Kit. Use with #141199002. Each.

141199048 (2) 60in Telescoping (Inner & Outer) Lateral Struts with Ground Hardware Kit. Use with #141199002. Each.

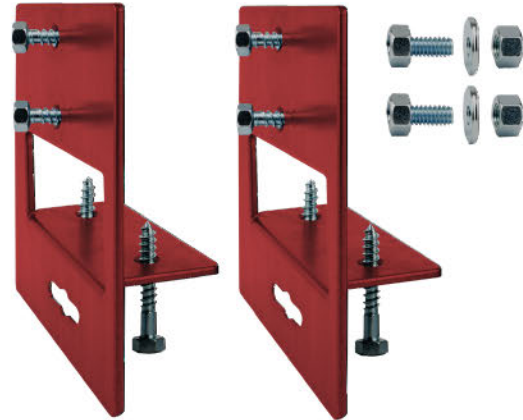
Hardware Kit Includes: (2) 2" x 7-3/4" Lateral (Top) Beam Clips; (2) 1-5/8" x 2" Tube Clips; (2) 1/2" x 1-3/8" Washers; (2) 1/2" x 1-1/2" Carriage Bolts & Nuts; (4) 1/2" x 2-1/2" Carriage Bolts & Nuts; and (8) 1/4" x 3/4" Self-Drilling Screws.

LLBS Wind Zone 1 Pivot Clip Assembly



14112907 Pivot Clip Assembly with 7ft Galvanized Strap for Uplift Support on Minute Man LLBS Foundation Systems, [No Hardware], Each (4/Bundle, 400/Pallet).

LLBS Wind Zone 1 Side Wall Bracket Kit



14112902 Side Wall Bracket with Hardware Kit for Uplift Support on Minute Man LLBS Foundation Systems. Each (12/Box).

Hardware Kit Includes: (2) Brackets, (4) 3/8" x 3-1/2" Lag Bolts, (4) 5/16" x 1-1/4" Lag Bolts, (2) 5/8" Pivot Bolts, (2) Pivot Nuts, and (2) Pivot Washers.

LLBS Longitudinal Beam Clamp



141199001 Steel Longitudinal Beam Clamp, with Bolts and Nuts, Painted Red. Each (12/Box)

LLBS Flex Tube Adapter



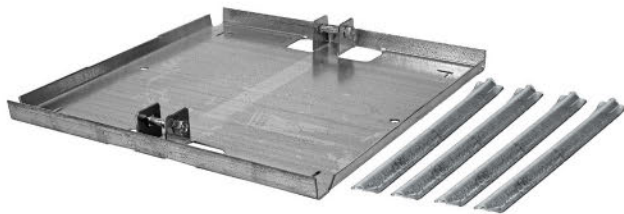
141110000 LLBS Concrete Flex Tube Adapter with Hardware Kit. Each.

L-Hook Anchor Bolt for Wet Concrete



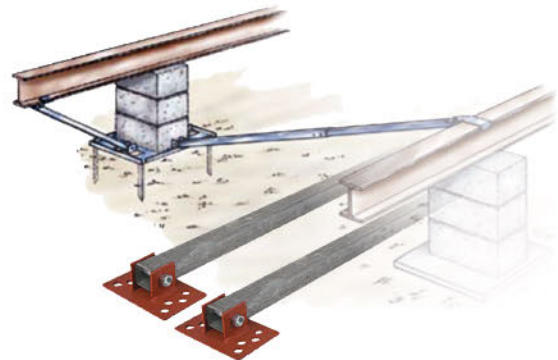
141199005 6in Steel L-Bolt, Bracing System (LLBS), Concrete-Wet Set. Each (4/Box).

Galvanized Steel Pier Pan Kit



141199002 Galvanized Steel Pier Pan for use with Ground Block(s), 20in W x 20in L, with (4) 16in L Angle Drive Pins & (2) 1/2in x 2-1/2in Carriage Bolts & Nuts. Each.

LLBS Longitudinal Ground Kits



Longitudinal Struts with Beam Clamps

(2) 1-1/2" sq. x 39", 44", 53" or 65" L Galvanized Steel Tubes
 (2) Pre-assembled Beam Clamps



Longitudinal Struts Hardware

(4) 3-3/4" x 2-3/4" Beam Clamp Top Covers
 (8) 1/2" x 1-1/4" Carriage Bolts & Nuts

System Diagram for reference only,
 not all parts shown are included.

141199011 39in Galvanized Steel Longitudinal Strut with Ground Hardware Kit for Piers up to 24in H. Use with #141199002. Each.
141199012 44in Galvanized Steel Longitudinal Strut with Ground Hardware Kit for Piers up to 32in H. Use with #141199002. Each.
141199013 53in Galvanized Steel Longitudinal Strut with Ground Hardware Kit for Piers up to 40in H. Use with #141199002. Each.
141199014 65in Galvanized Steel Longitudinal Strut with Ground Hardware Kit for Piers up to 48in H. Use with #141199002. Each.
 Hardware Kit Includes: (4) 3-3/4" x 2-3/4" Beam Clamp Top Covers, (8) 1/2" x 1-1/4" Carriage Bolts & Nuts.

Xi2-24 Lateral Beam Bracket-Only



141100012 Lateral Beam Bracket-Only (Included with Lateral Hardware Kits). Each.

Xi2-24 Lateral Ground Hardware



141100019 Lateral Ground Hardware Kit. Each.

Xi2-24 Ground Lateral Kit



141100006 5ft Lateral Strut with Ground Hardware Kit. Each.

Xi2-24 Lateral Concrete Kit



141100028 5ft Lateral Strut with Concrete Hardware Kit. Each.

Xi2-24 Wind Zone 1 Uplift - Rim Joist Bracket Assembly



141159698 Rim Joist Bracket Assembly with 5ft Galvanized Strap for Uplift Support on Tie Down Xi2 Foundation Systems [No Hardware]. Each (12/Box).

Xi2-24 Wind Zone 1 Uplift - Rim Joist Bracket with Hardware Kit



141159700 Rim Joist Bracket with Hardware Kit for Uplift Support on Tie Down Xi2 Foundation Systems. Each.

Hardware Kit Includes: (2) Brackets & (4) Lag Bolts.

Xi2-24 Wind Zone 1 Uplift - Rim Joist Bracket-Only


141159699 Rim Joist Bracket-Only, Uplift, 4-11/16" x 2-3/4", [No Hardware]. Each (50/Box).

Xi2-24 Longitudinal Concrete Hardware Kit


141100040 Longitudinal Concrete Hardware Kit for Double Beams. Each (1/Bag).

141100046 Longitudinal Concrete Hardware Kit. Each (2/Box).

Xi2-24 Longitudinal Ground Hardware Kit


141100016 Longitudinal Ground Hardware Kit. Each (2/Box).

Xi2-24 Longitudinal Strut-Tube Only


141100000 34in Longitudinal Strut for Ground and Concrete. Each.

141100001 43in Longitudinal Strut for Ground and Concrete. Each.

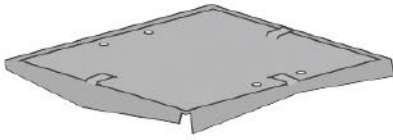
141100002 48in Longitudinal Strut for Ground and Concrete. Each.

141100003 57in Longitudinal Strut for Ground and Concrete. Each.

141100004 69in Longitudinal Strut for Ground and Concrete. Each.

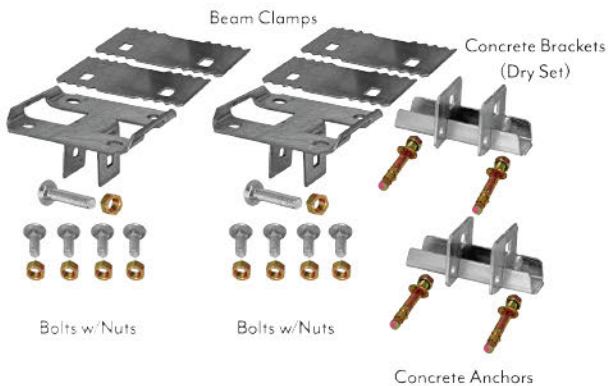
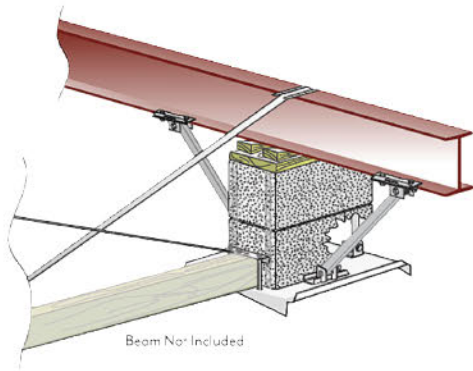
Vector 3 Square Foot Pan

3' Square Foot Pan



141199029 Vector 3-Square Foot Pan, Longitudinal/Lateral. Use Hardware Kit #141199026. Each. Sold individually, (2) required for lateral and (1) for longitudinal systems.

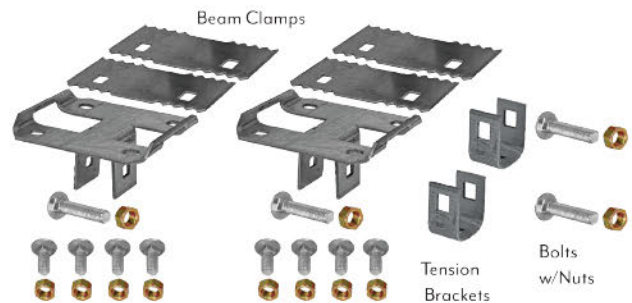
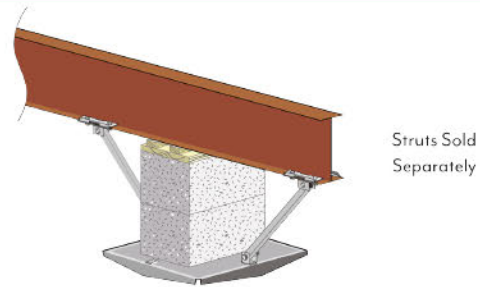
Vector Longitudinal Concrete Hardware Kit



System Diagram for reference only,
not all parts shown are included.

141599004 Vector Longitudinal Stabilization Concrete Hardware Kit. Use with #141199027 and #141299001. Each (60/Pallet).
Kit Includes: (2) Beam Clamps, Tension Brackets, Nuts & Bolts.
Longitudinal struts not included.

Vector Longitudinal Hardware Kit - Ground & 3 Square Foot Pan

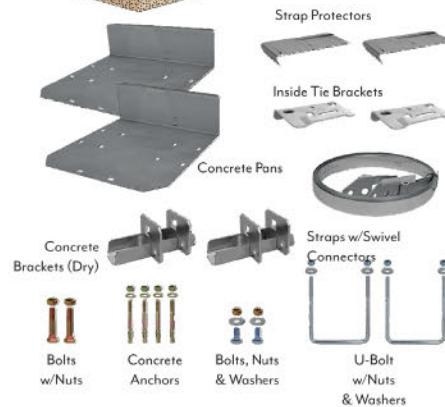
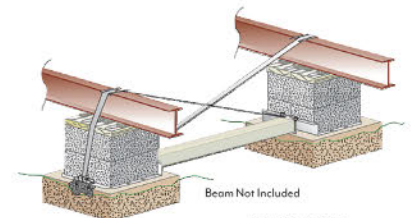


System Diagram for reference only,
not all parts shown are included.

141199026 Vector Longitudinal Hardware Kit for 3-SqFt Pan. Each (80/Pallet).

Hardware Kit Includes: (2) Beam Clamps, (2) Tension Brackets, Nuts & Bolts.

Vector Lateral Double-Stack Blocks Kit

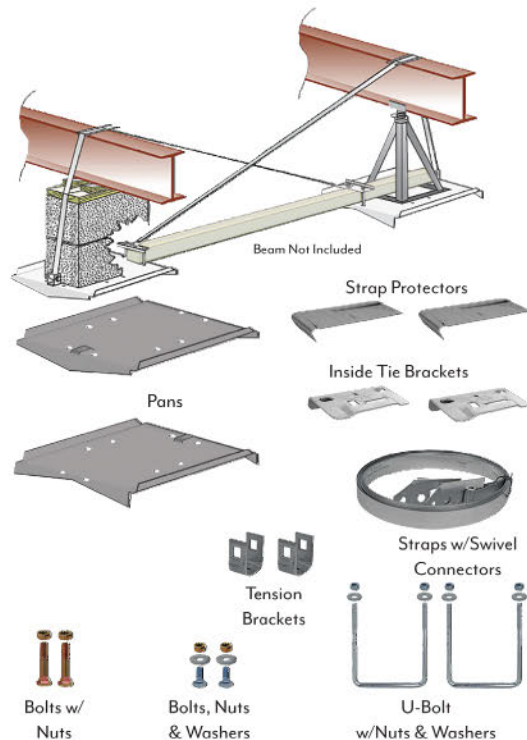


System Diagram for reference only,
not all parts shown are included.

141299001 Double-Stack Concrete Block Lateral Stabilization Kit, Vector Systems. Each (60/Pallet).

Hardware Kit includes: (2) Concrete Pans, Swivel Straps, Strap Protectors, Concrete Brackets, Slotted Bolts, & Hardware.

Vector Lateral Block Pans Kit

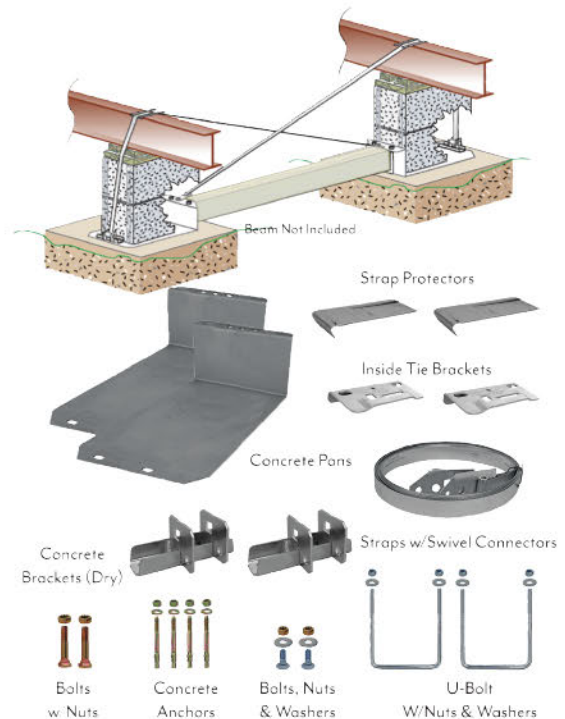


System Diagram for reference only,
not all parts shown are included.

141299000 Block Pans Lateral Stabilization Kit, Vector Systems. Each (42/Pallet).

Hardware Kit Includes: (2) Pans, Swivel Straps, Strap Protectors, Pan Connectors, Slotted Bolts, & Hardware.

Vector Lateral Kit - Single-Stack Blocks

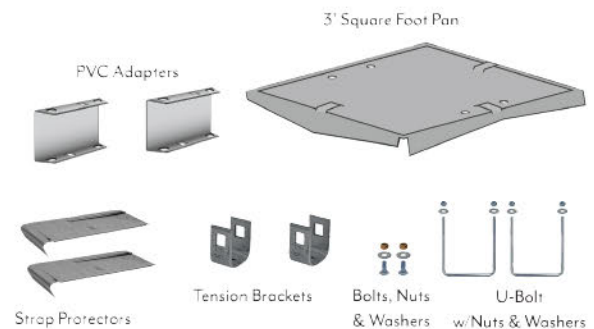


System Diagram for reference only,
not all parts shown are included.

141199027 Single Concrete Block Lateral Stabilization Kit, Vector Systems. For up to 6 Blocks. Each (60/Pallet).

Hardware Kit includes: (2) Concrete Pans, Swivel Straps, Strap Protectors, Concrete Brackets, Slotted Bolts, & Hardware.

Vector Lateral Ground Kit for 3 Square Foot Pan



(3sqft pan #141199029 not included with kit)

141199025 Vector Lateral Hardware Kit, Florida Accepted. Each (60/Pallet).

Hardware Kit Includes: U-Bolts, Strap Protectors, Pan Connectors, PVC Adapter, Nuts & Bolts.

Longitudinal Beam Clamp for Anchors & Strap



141199019 8-Bolt Galvanized Steel, Gator Beam Clamp with Nuts, Bolts & Washers. Florida Accepted. Each (4/Box).

Single Disk Anchor



141499001 Steel Single Disk Auger, 48in L x 5/8in Shaft, with 6in Helix, Painted Red. Each (4/Bundle or 300/Pallet).

141499035 Galvanized Steel Single Disk Auger, 48in L x 5/8in Shaft, with 6in Helix. Double-Tension Head, Florida. Each (4/Bundle or 300/Pallet).

141499036 Galvanized Steel Single Disk Auger, 48in L x 3/4in Shaft, with 6in Helix. Double-Tension Head, Florida. Each (4/Bundle or 300/Pallet).

141499037 Galvanized Steel Single Disk Auger, 24in L x 5/8in Shaft, with 6in Helix, Double-Tension Head. Each (4/Bundle or 300/Pallet).

141499038 Single Disk Auger, 60in L x 3/4in Shaft, with 7in Helix, Double-Tension Head, Galvanized Steel-Florida. Each (4/Bundle or 200/Pallet).

Double Helix Anchor



141499029 Galvanized Steel Twin Disk Auger, 30in L x 3/4in Shaft, with Two 4in Helices. Double-Tension Head, Florida. Each (200/Pallet).

141499030 Galvanized Steel Twin Disk Auger, 36in L x 3/4in Shaft, with One 4in and One 6in Helix. Double-Tension Head, Florida. Each (150/Pallet).

Double Helix Anchor



141499032 Steel Twin Disk Auger, 36in L x 3/4in Shaft, with (1) 4in and (1) 6in Helix, Double-Tension Head, Painted Red. Each (150/Pallet).

141499034 Steel Twin Disk Auger, 30in L x 3/4in Shaft, with (2) 4in Helices. Double-Tension Head, Painted Red. Each (8/Bundle or 200/Pallet).

Double Helix Anchor with Stabilizer Cap



141499007 Steel EZ Twin Disk Auger, 30in L x 3/4in Shaft, with Two 4in Helices. Belled Double-Tension Head, Painted Red. Each (150/Pallet).

141499008 Steel EZ Twin Disk Auger, 36in L x 3/4in Shaft, with One 4in and One 6in Helix. Belled Double-Tension Head, Painted Red. Each (120/Pallet).

141499014 36in L Twin Disk Steel Deep-Set Auger Anchor with 3/4in Shaft, 1-4in and 1-6in Helices, Painted Black. Belled, Double-Tension Head. Each (4/Bundle or 160/Pallet).

Eye Anchor



141499012 Steel Single Disk Auger, 15in L x 1/2in Shaft with 4in Helix, Welded-Eye, and Painted Red. Each (500/Pallet).

141499013 Single Disk Auger, Helix, 30in L x 1/2in Shaft, 4in Helix, Welded-Eye, Painted Red, Steel. Each (500/Pallet).

141499033 Galvanized Steel Single Disk Auger, 30in L x 1/2in Shaft with 4in Helix and Welded-Eye. Each (500/Pallet).

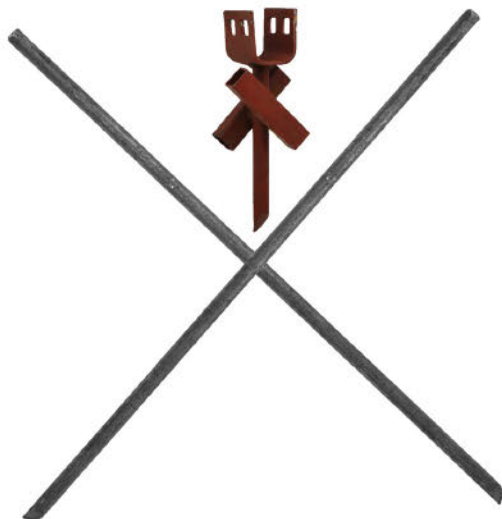
141499039 Steel Single Disk Auger, 48in L x 3/4in Shaft with 6in Helix and Welded-Eye, Painted Red. Each (300/Pallet).

Coral Anchor



141499002 Steel Coral Anchor, 36in L with 5/8in Shaft, Three Barbs, Double-Tension Head, and Painted Red. Each (8/Bundle or 200/Pallet).

Rock Cross-Drive (X) Anchor



141499004 Steel in Xin Cross Drive, Double-Tension Head, Painted Red. Each (16/Box).

141499005 Galvanized Steel in Xin Drive Anchor Rods. (2) 30in L Drive Rods Only with 3/4in Shaft. For Use in Rock. Each (8/Bundle or 384/Pallet).

Shed Anchor Kit



141599001 Steel Storage Building/Shed Anchors, (4) 15in L with Cable and (4) Clamps. Painted Black. Each (100/Pallet).

Dry Concrete Anchoring Sleeve Bolt



141499000 Anchor Bolt, Wet Concrete, 3in L x 5/8in Shaft. Each (120/Box).

Wet Concrete J-Hook Anchor with Double-Tension Head



141499006 Steel J-Hook with Swivel-Head, Wet or Cured Concrete, Rebar, Double-Tension Head, Painted Red. Each (24/Box).

Wet Concrete J-Hook Anchor with Double-Tension Head



141499031 Galvanized Steel J-Hook with Swivel-Head, Wet or Cured Concrete, Rebar, Double-Tension Head, Florida. Each (24/Box).

Dry Concrete Double-Tension Anchor Head-Only



141499010 Double-Tension Steel Anchor Head, for Concrete Anchors, Painted Red. Each (48/Box).

Dry Concrete Double-Tension Anchor Head-Only



141499009 Double-Tension Galvanized Steel Anchor Head, for Concrete Anchors, Florida. Each (48/Box).

Anchor & Strap Split Bolt



141599002 Steel Slotted Split Bolt with Nut, for Double-Tension Head Anchors & Systems. Each (8/Bag, 96/Box, or 3648/Pallet)

ABS Stabilizer Plate



141599010 Black ABS Plastic Lateral Stabilizer Plate, Florida-Accepted. Each (6/Bundle or 540/Pallet).

Anchor Stabilizer Plate - Quik Set



141599009 Steel Quik Set Stabilizer Plate. Painted Black. Each (4/Box or 224/Pallet).

Stabilizer Plate



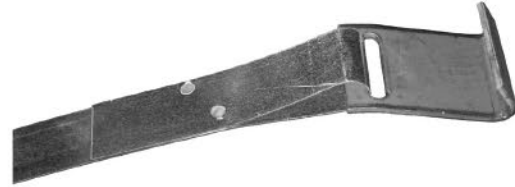
141599041 Galvanized Steel 17-1/2in H Lateral Stabilizer Plate, Florida Accepted. Each (200/Pallet).

Stabilizer Plate



141599000 8 Gauge Steel Lateral Stabilizer Plate, 12in x 11-1/4in. Painted Black. Each (8/Box or 432/Pallet).

Frame Hook Connector Strap Assemblies



141599018 Galvanized Steel Frame Hook with 6ft L x 1-1/4in W Strap, G120. Each (8/Bundle or 600/Pallet).

141599019 Galvanized Steel Frame Hook with 7ft L x 1-1/4in W Strap, G120. Each (8/Bundle or 600/Pallet).

141599020 Galvanized Steel Frame Hook with 8ft L x 1-1/4in W Strap, G120. Each (8/Bundle or 600/Pallet).

141599021 Galvanized Steel Frame Hook with 10ft L x 1-1/4in W Strap, G120. Each (8/Bundle or 600/Pallet).

141599022 Galvanized Steel Frame Hook with 12ft L x 1-1/4in W Strap, G120. Each (8/Bundle or 600/Pallet).

141599023 Galvanized Steel Frame Hook with 14ft L x 1-1/4in W Strap, G120. Each (8/Bundle or 600/Pallet).

141599024 Galvanized Steel Frame Hook with 16ft L x 1-1/4in W Strap, G120. Each (8/Bundle or 600/Pallet).

141599025 Galvanized Steel Frame Hook with 18ft L x 1-1/4in W Strap, G120. Each (8/Bundle or 600/Pallet).

Double-Slot Buckle Strap Assemblies



141599026 Galvanized Steel Double-Slot Buckle with 6ft L x 1-1/4in W Strap, G120. Each (8/Bundle or 600/Pallet).

141599027 Galvanized Steel Double-Slot Buckle with 7ft L x 1-1/4in W Strap, G120. Each (8/Bundle or 600/Pallet).

141599028 Galvanized Steel Double-Slot Buckle with 8ft L x 1-1/4in W Strap, G120. Each (8/Bundle or 600/Pallet).

141599029 Galvanized Steel Double-Slot Buckle with 10ft L x 1-1/4in W Strap, G120. Each (8/Bundle or 600/Pallet).

141599030 Galvanized Steel Double-Slot Buckle with 14ft L x 1-1/4in W Strap, G120. Each (8/Bundle or 600/Pallet).

Galvanized Steel Strap



141599017 Galvanized Steel Strap, 600ft L x 1-1/4in W x.035in T, G60. Roll (20/Pallet).

141599031 Galvanized Steel Strap, 37ft L x 1-1/4in W x.035in T, G60. Roll (12/Box or 480/Pallet).

141599032 Galvanized Steel Strap, 37ft L x 1-1/4in W x.035in T, G120. Florida Accepted. Roll (12/Box or 480/Pallet).

141599038 Galvanized Steel Strap, 600ft L x 1-1/4in W x.035in T, G120. Florida Accepted. Roll (20/Pallet).

Swivel Connector Strap Assemblies



141599033 Galvanized Steel Swivel Head Connector with 5ft L x 1-1/4in W, G120. Florida Accepted. Each (8/Bundle or 600/Pallet).

141599034 Galvanized Steel Swivel Head Connector with 6ft L x 1-1/4in W, G120. Florida Accepted. Each (8/Bundle or 600/Pallet).

141599035 Galvanized Steel Swivel Head Connector with 7ft L x 1-1/4in W, G120. Florida Accepted. Each (8/Bundle or 600/Pallet).

141599036 Galvanized Steel Swivel Head Connector with 8ft L x 1-1/4in W, G120. Florida Accepted. Each (8/Bundle or 600/Pallet).

141599037 Galvanized Steel Swivel Head Connector with 12ft L x 1-1/4in W, G120. Florida Accepted. Each (8/Bundle or 600/Pallet).

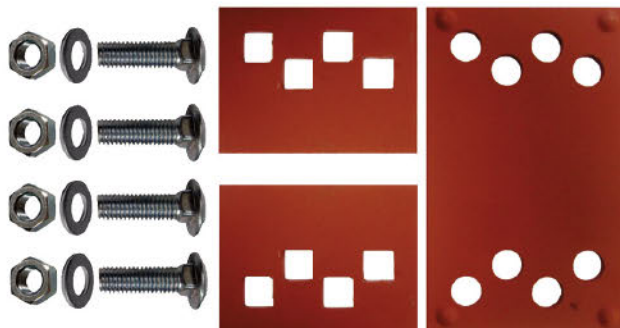
Universal Connector Strap Assemblies



141599006 Galvanized Steel Universal Connector with 6ft L x 1-1/4in W, G120 Strap. 50/Box (1,000/Pallet).

141599007 Galvanized Steel Universal Connector with 8ft L x 1-1/4in W, G120 Strap. 50/Box (1,000/Pallet).

Longitudinal Beam Clamp Kit - Anchors & Strap



141199000 Steel Longitudinal 4-Bolt Beam Clamp, with Nuts, Bolts, & Washers. Painted Red. Each (12/Box).

Anchor Drive Machine



141599008 Heavy-Duty 1/2 HP, 20 RPM, 7.5A@110V Electric Drive Machine with GFI, Forward/Reverse Switch, and Double-Tension Drive-Head (#141599003). Each.

Anchor Drive Machine Eye Adapter



141599042 Eye Anchor Adapter for Anchor Drive Machine #141599008 (Sold Separately). Each.

Double-Tension Head Adapter



141599003 Anchor Drive Head Adapter for Use with 1/2 HP Drive Machine (#141599008). Each.

Anchor Speed Wrench



6248900 Speed Wrench, 15/16in Nut & Socket, with Handle Grip, for Split Bolts/Strap. Each.

Pocket Soil Penetrometer



62700 Aluminum Soil Compressive-Strength Pocket Penetrometer, with Canvas Case, for Use with Part Number 62701. Each.

Soil Test Probe Kit



141599005 Soil Test Probe Kit with Carrying Case and Torque Wrench Instruction. Each.

Strap Seal Crimping Tool



621125 Strap Crimping Tool for 1-1/4in W Anchor Strapping. Each.

Slotted Frame Hook Strap Connector



141599015 Steel Single Slot Frame Hook. Each (200/Box).

Double-Slotted Buckle Strap Connector



141599016 Galvanized Steel Strap Buckle, Double Slot, G120. Each (200/Box).

Steel Crimp-Seal Strap Connector



141599014 Steel Crimping Strap Seal for 1-1/4in Steel Straps. Each (1,000/Box).

3in Beam Clip Kit



141199015 Galvanized Steel Beam Clip with Nut & Bolt. Suitable for 3in Beam with Universal or Standard Swivel Connectors. Each (24/Box).

4in Beam Clip Kit



141199016 Galvanized Steel Beam Clip with Nut & Bolt. Suitable for 4in Beam with Universal or Standard Swivel Connectors. Each (24/Box).

Double Beam Clip Kit



141199017 Galvanized Steel Beam Clip with Nut & Bolt. Suitable for Double-Beams with Universal or Standard Swivel Connectors. Each (24/Box).

Angled Frame Bracket Kit



141199018 Galvanized Steel in Yin Shaped Angle Frame Bracket with Bolts and Nuts. For attaching longitudinal anchors to I-beam at each end of the home. Each (24/Box).

Roof Bracket



141399000 Galvanized Steel "W" Shaped Roof Bracket, 30° Angle Strap & Cable Spacer. Each (24/Box).

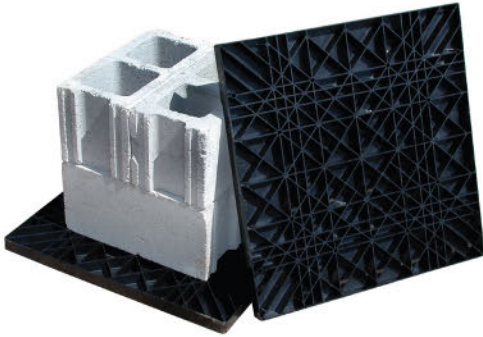
ABS Plastic Pier Cap Plate



141799011 ABS Pier Cap Plates, 16in W x 1in H x 8in L, Black. Each (20/Bundle).

141799012 ABS Pier Cap Plates, 16in W x 2in H x 8in L, Black. Each (20/Bundle).

ABS Plastic Pier Pad



142099000 ABS Plastic Pier Pad, 24in L x 24in W, Black. Each (5/Bundle or 140/Pallet).

142099001 ABS Plastic Pier Pad, 18in L x 16in W, 2 Square Foot, Black. Each (12/Bundle or 288/Pallet).

142099002 ABS Plastic Pier Pad, 25in L x 17in W, 3 Square Foot, Black. Each (5/Bundle or 160/Pallet).

142099003 ABS Plastic Pier Pad, 16in L x 16in W, Black. Each (12/Bundle or 288/Pallet).

ABS Plastic Wedges-Shim



141899006 ABS Wedge, Pier Shim, 6in W x 1in H x 4in L, Black. Each (200/Bag).

Steel Pier Head



141999000 Steel Pier Head with Nut, Adjustable-4in (HUD Allows 2in Max. Ext.), Use with Model 0330## Steel Piers (Sold Separately). Each (40/Box).

Painted Steel Pier



141999001 Steel Pier, 11in x 11in x 8in H. Use with #141999000 Head. Painted Red. Each (400/Pallet).

141999002 Steel Pier, 11in x 11in x 10in H. Use with #141999000 Head. Painted Red. Each (300/Pallet).

141999003 Steel Pier, 11in x 11in x 12in H. Use with #141999000 Head. Painted Red. Each (300/Pallet).

141999004 Steel Pier, 11in x 11in x 14in H. Use with #141999000 Head. Painted Red. Each (300/Pallet).

141999005 Steel Pier, 11in x 11in x 16in H. Use with #141999000 Head. Painted Red. Each (300/Pallet).

141999006 Steel Pier, 11in x 11in x 18in H. Use with #141999000 Head. Painted Red. Each (300/Pallet).

141999007 Steel Pier, 11in x 11in x 20in H. Use with #141999000 Head. Painted Red. Each (300/Pallet).

141999008 Steel Pier, 11in x 11in x 22in H. Use with #141999000 Head. Painted Red. Each (250/Pallet).

141999009 Steel Pier, 11in x 11in x 24in H. Use with #141999000 Head. Painted Red. Each (250/Pallet).

141999010 Steel Pier, 11in x 11in x 26in H. Use with #141999000 Head. Painted Red. Each (250/Pallet).

141999011 Steel Pier, 11in x 11in x 28in H. Use with #141999000 Head. Painted Red. Each (250/Pallet).

141999012 Steel Pier, 11in x 11in x 30in H. Use with #141999000 Head. Painted Red. Each (250/Pallet).

Treated Hardwood Boards



141799000 Treated Hardwood Board 16in L x 8in W x 1in H. 10/Bundle.

141799001 Treated Hardwood Board 16in L x 8in W x 2in H. 5/Bundle.

Treated SYP Boards

141799007 Treated Southern Yellow Pine Board, 16in L x 8in W x 2in H. 5/Bundle.

141799010 Treated Southern Yellow Pine Board, 16in L x 8in W x 1in H. 10/Bundle.

Untreated Hardwood Boards

141799005 Untreated Hardwood Board 16in L x 8in W x 1in H. 10/Bundle.

141799006 Untreated Hardwood Board 16in L x 8in W x 1in H. 10/Bundle.

141799008 Untreated Hardwood Board 16in L x 8in W x 2in H. 5/Bundle.

141799009 Untreated Hardwood Board 16in L x 8in W x 2in H. 5/Bundle.

Untreated SYP Boards

141799003 Untreated Southern Yellow Pine Board, 16in L x 8in W x 1in H. 20/Bundle.

141799004 Untreated Southern Yellow Pine Board, 16in L x 8in W x 2in H. 10/Bundle.

Untreated Hardwood Wedges



141899000 Hardwood Wedge, 6in L x 4in W x 1in H. 25/Bundle.

141899001 Hardwood Wedge, Untreated, 9in L x 4in W x 1in H. 25/Bundle.

141899002 Hardwood Wedge, 8in L x 4in L x 1in H. 30/Bundle.

141899003 Hardwood Wedge, 7in L x 4in W x 1in H. 100/Bag.

141899004 Hardwood Wedge, Untreated, 8in L x 4in W x 3/4in H. 25/Bundle.

141899007 Hardwood Wedge, Untreated, 12in L x 4in W x 1in H. 25/Bundle.

141899008 Hardwood Wedge, Untreated, 12in L x 4in W x 1/2in H. 32/Bundle.

Treated Hardwood Wedges

141799002 Hardwood Wedge, Treated, 8in L x 4in W x 2in H. 80/Bag.

Untreated Pine Wedge

141899005 Pine Wedge, 8in L x 4in W x 1in H. 80/Bag.

Perimeter Joist Brace



211700011 Adjustable Steel Perimeter Brace, EZ Joist, 36in L, Painted Red. Each (4/Box).

Outrigger Kits



141699000 Adjustable, Steel, Outrigger with Hardware Kit for 12ft-14ft widths, Painted Black. Kit (1-pair/Kit).

141699001 Adjustable, Steel, Outrigger with Hardware Kit for 16ft widths, Painted Black. Kit (1-pair/Kit).

Close-Up Film



142299000 4 Mil, Premium Blend, Close-Up Poly Film, 300ft L x 14ft W, White, UV-Resistant. Each (20/Pallet).

Vapor Barriers



142299001 Nominal 6 Mil, Premium Blend, Poly Film Vapor Barrier, 100ft L x 14ft W, Black. Each (25/Pallet).

142299002 Nominal 6 Mil, Premium Blend, Poly Film Vapor Barrier, 100ft L x 16ft W, Black. Each (25/Pallet).

142299003 Nominal 6 Mil, Premium Blend, Poly Film Vapor Barrier, 100ft L x 20ft W, Black. Each (25/Pallet).

142299005 Nominal 6 Mil, Economy Blend, Poly Film Vapor Barrier, 100ft L x 14ft W, Black. Each (25/Pallet).

142299006 Nominal 6 Mil, Economy Blend, Poly Film Vapor Barrier, 100ft L x 16ft W, Black. Each (25/Pallet).

142299007 Nominal 6 Mil, Economy Blend, Poly Film Vapor Barrier, 100ft L x 20ft W, Black. Each (25/Pallet).

TRANSPORTATION

Bearing Cones



142199018 Outer Bearing Cone, 2in Diameter. Each.

142199020 Inner Bearing Cone, 2-7/8in Diameter. Each.

Grease Cap



142199006 Grease Cap with Flange, 2.45in OD x 1.34in H. Each.

Double Eye Equalizers



142199015 Cast Steel Double-Eye Equalizer with Bushed Holes, 7-1/4in L x 4in H. Painted Black, EQ-310. Each.

142199016 Cast Steel Double-Eye Equalizer, 6-3/4in L x 3-1/4in H, No Bushings. Painted Black, EQ-104. Each (6/Box).

Rim Clamp Lug Bolt



142199011 2-1/4in L x 1/2in Heavy Duty, Plated, Wheel Rim Clamp Lug Bolt, 13 Thread, Fits 3/4in Socket. Each.

142199012 1-1/16in L x 1/2in Heavy Duty Wheel Rim Clamp Lug Bolt, 13 Thread, Fits 3/4in Socket, Grade 5 Each (300/Box).

Rim Clamp Plated Square Nut



142199005 Heavy Duty Plated Square Nut for Rim Clamp, 1-1/4in, 13 Thread. Each.

Spring Axle Seat



142199009 Spring Axle-Seat, 4in L, for 3in Axle. Each.

Shackle Bolt



142199001 Plated Shackle Bolt, 3in L x 9/16in, 18 Thread, Grade 5, for 1-3/4in Spring. Each (150/Box).

Spring Hanger



142199007 Steel Spring Hanger, 3-1/4in H x 1-3/4in W. Each.

142199008 Steel Spring Hanger, 1-1/2in H x 1-3/4in W. Each.

Shackle Hexnut



142199000 9/16in Shackle Bolt Hexnut, 18 Thread, Grade B. Each.

Spring Tie Plate



142199004 Spring Tie-Plate, for 3in Axle with 1-3/4in Spring, for 1/2in U-Bolts Each.

Shackle Link



142199017 Shackle Link, 2-1/8in L-Hole To Hole, 3-3/4in L. Each.

U-Bolt



142199013 6-1/2in L x 1/2in Steel U-Bolt for 3in Axle, 20 Thread. Each.

142199014 7in L x 1/2in Steel U-Bolt for 3in Axle, 20 Thread. Each.

U-Bolt Hex Nut



142199010 1/2in U-Bolt Hexnut, 20 Thread, Grade B. Each.

Lag Screw Washers



201112003 Zinc Flat Washer for 9/16in Hex Head; 1-1/2in OD x 3/8in ID. 50/Bag.

Lag Screws



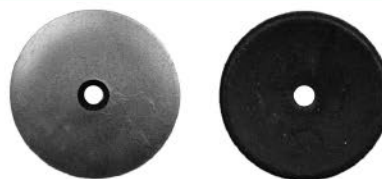
201112005 Zinc Lag Screw, 9/16in Hex Head, 6in L x 3/8in. 50/Box.

Lag Screws & Flat Washers



201112002 Lag Screw, 9/16in Hex Head, 5in L x 3/8in. 300/Box.

Rumble Button



142199019 1-1/8in Diameter Zinc-Coated Rumble Button Washer with Neoprene Gasket Box (100/Box).

Stove Bolt



171115009 Pipe Strap (Stove) Bolt with Hex Nut, 3/4in L x 1/4in. Box (100/Box).

12.5 Ton Bottle Jack



612100 Norco 12.5-Ton Hydraulic Bottle Jack Repair Kit, for 12/12.5-Ton Jacks (6276512 & 6276412). Each.

6276412 Norco 12.5-Ton Hydraulic Bottle Jack, Standard Axle, Lift: 9-7/16in to 15-5/16in. Each (4/Box).

6276512 Norco 12.5-Ton Hydraulic Bottle Jack, Low Height Axle, Lift: 6-11/16in to 10-7/16in. Each (4/Box).

22.5 Ton Bottle Jack



621253 Norco 22.5-Ton Hydraulic Bottle Jack Repair Kit, for 22-Ton (6276520). Each.

6276520 Norco 22.5-Ton Hydraulic Bottle Jack, Standard Axle, Lift: 10-13/16in to 7-7/16in. Each (2/Box).

Nylon Tricot Flag



142199023 Red Nylon Tricot Flag, 18in x 18in. Each (50/Box).

Nylon Tricot Flag on Wood Staff



142199024 Red Nylon Tricot Flag, 18in x 18in on 1/2in Wood Staff. Each (25/Box).

142199025 Red Nylon Tricot Flag, 18in x 18in on 3/4in Wood Staff. Each (25/Box).

Oversize Load Sign



142199021 Metal Oversize Load Sign, 6ft W x 15in H. Each.

142199026 Oversize Load Sign, 84in W x 18in H. Each.

Plastic Flag Clip



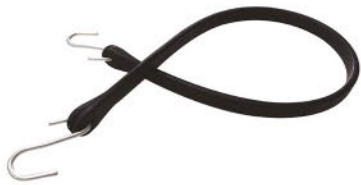
142199022 Plastic Flag Clip. Bag (25/Bag).

Shock Cord



6051622 Shock Cord with Locking Metal Snaps, 18in Length. Each (25/Box).

Tarp Strap



142199002 20in L Tarp Strap with S-Hook Each (25/Box).

142199003 31in L Tarp Strap with S-Hook. Each (25/Box).

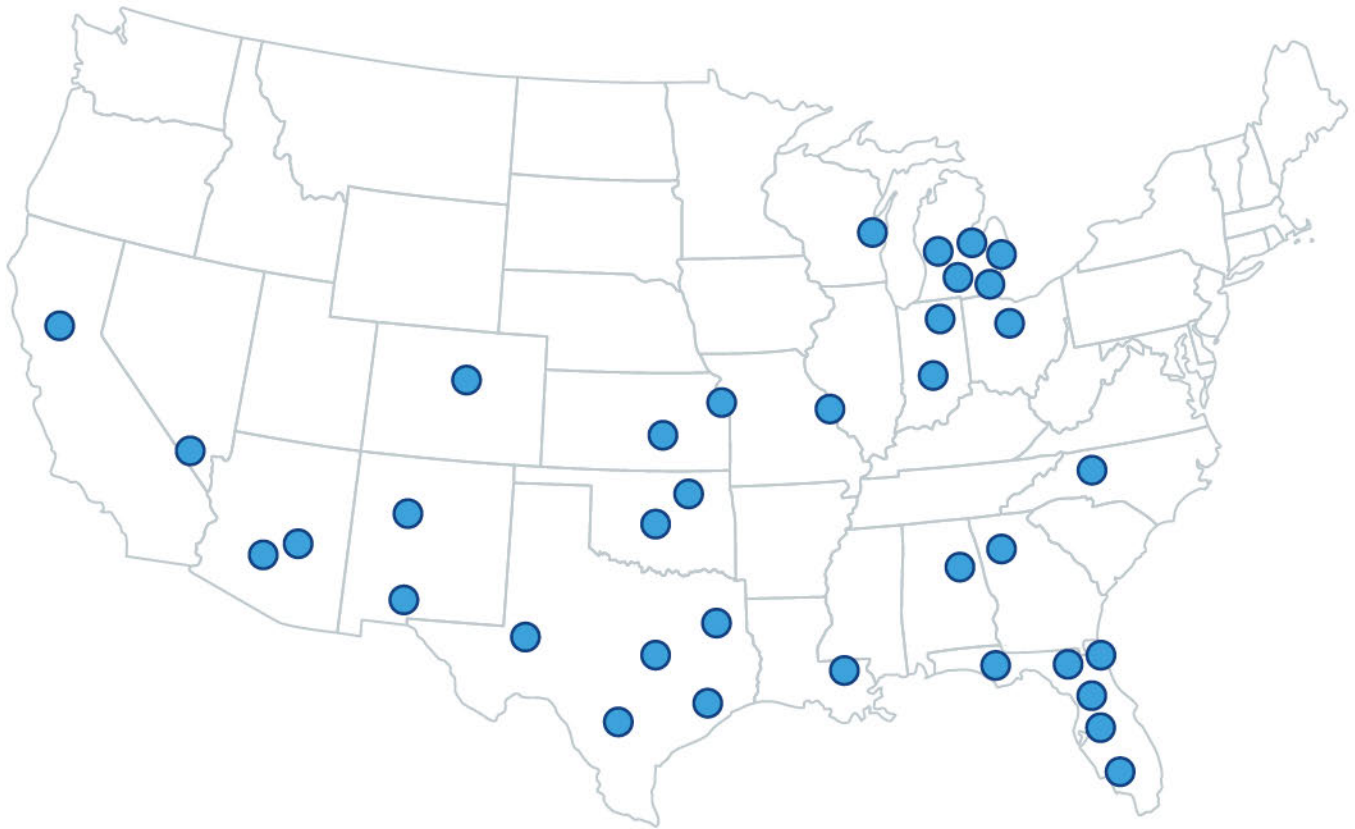
Antifreeze



181510000 1-Gallon, Prime Guard, Glycerin-Free, Non-Toxic, Ready-to-Use, RV and Marine, Antifreeze for Water Line Winterization. Do NOT add water - use full strength, -50°F Min Temp. Each (6/Cartron & 216/Pallet).



is Nationwide



ALBUQUERQUE, NM · ATLANTA, GA · CHESTERFIELD, MI · DALLAS/FT. WORTH, TX · DENVER, CO
FENTON, MO · FLINT, MI · FOND DU LAC, WI · FORT MYERS, FL · FREMONT, OH · GOSHEN, IN · GRAND RAPIDS, MI
HAMMOND, LA · HOUSTON, TX · INDIANAPOLIS, IN · JACKSONVILLE, FL · LAKE CITY, FL · LAKELAND, FL
LANSING, MI · LAS CRUCES, NM · LAS VEGAS, NV · LENEXA, KS · ODESSA, TX · OKLAHOMA CITY, OK
PANAMA CITY, FL · PHOENIX, AZ · ROMULUS, MI · SACRAMENTO, CA · SAN ANTONIO, TX · TALLADEGA, AL
TAYLOR, MI · TULSA, OK · TYLER, TX · WACO, TX · WICHITA, KS · WINSTON-SALEM, NC