

# SmartComfort® Product Catalog



 **STYLECREST®**

## Manufactured Housing Split System Condensers



- **Reliability You Can Count On** from Carrier that has been the historical leader in HVAC products, which undergo some of the most detailed and stringent quality processes during assembly, including 100% run-testing.
- **Stay Cool Without Worry** when you use a SmartComfort™ split system which carries a 5-year limited warranty on all functional parts, with an option to extend that coverage to 10-years parts-only if registered within 90-days of installation.

## R-454B Outdoor Split System North-AC Condensers

Item #	Model	Nominal Tons <sup>1</sup>	Product Dimensions	Package Weight	Min. Pad Size	Suction Line Connection	Liquid Line Connection	MCA	MOP	Sound
			Packaging Dimensions							
R5A4S18AKANA	R5A4S18AKANA	1.5	23-1/8"D x 23-1/8"W x 24-7/8"H	109 lbs	24" x 24"	3/4"	3/8"	10.4	15 A	75 dB
			24-1/8"D x 24-1/8"W x 29-7/8"H							
R5A4S24AKANA	R5A4S24AKANA	2	25-3/4"D x 25-3/4"W x 25-5/16"H	121 lbs	26" x 26"	3/4"	3/8"	15.1	25 A	74 dB
			26-3/4"D x 26-3/4"W x 33-3/4"H							
R5A4S30AKANA	R5A4S30AKANA	2.5	31-3/16"D x 31-3/16"W x 31-11/16"H	160 lbs	32" x 32"	3/4"	3/8"	15.6	25 A	73 dB
			32-3/16"D x 32-3/16"W x 33-1/4"H							
R5A4S36AKANA	R5A4S36AKANA	3	31-3/16"D x 31-3/16"W x 24-7/8"H	144 lbs	32" x 32"	7/8"	3/8"	16.4	25 A	75 dB
			32-3/16"D x 32-3/16"W x 29-7/8"H							
R5A4S42AKANA	R5A4S42AKANA	3.5	31-3/16"D x 31-3/16"W x 41-7/8"H	202 lbs	32" x 32"	7/8"	3/8"	23.5	40 A	73 dB
			32-3/16"D x 32-3/16"W x 40-1/16"H							
R5A4S48AKANA	R5A4S48AKANA	4	31-3/16"D x 31-3/16"W x 28-1/4"H	188 lbs	32" x 32"	7/8"	3/8"	24.5	40 A	76 dB
			32-3/16"D x 32-3/16"W x 29-7/8"H							
R5A4S60AKANA	R5A4S60AKANA	5	31-3/16"D x 31-3/16"W x 35-1/16"H	204 lbs	32" x 32"	7/8"	3/8"	33.5	50 A	76 dB
			32-3/16"D x 32-3/16"W x 33-1/4"H							

<sup>1</sup>) These are nominal values. Consult the AHRI Certified Products Directory for actual performance and required airflow.  
 An exact electric furnace model is **REQUIRED** to validate the a Split System AHRI Rating.  
 Furnaces and coil boxes are supplied by Clayton Homes Manufacturing and are not stocked by Style Crest.

## R-454B Outdoor Split System South-AC Condensers

Item #	Model	Nominal Tons <sup>1</sup>	Product Dimensions		Package Weight	Min. Pad Size	Suction Line Connection	Liquid Line Connection	MCA	MOP	Sound
			Packaging Dimensions								
101100021	R5A5S18AKAWA	1.5	25-3/4"D x 25-3/4"W x 28-11/16"H		125 lbs	24" x 24"	3/4"	3/8"	11.4	20 A	75 dB
			25-3/4"D x 25-3/4"W x 29-7/8"H								
101100022	R5A5S24AKAWA	2	25-3/4"D x 25-3/4"W x 35-1/2"H		136 lbs	26" x 26"	3/4"	3/8"	14.2	20 A	73 dB
			25-3/4"D x 25-3/4"W x 36-11/16"H								
101100023	R5A5S30AKAWA	2.5	31-3/16"D x 31-3/16"W x 35-1/16"H		161 lbs	32" x 32"	3/4"	3/8"	15.2	25 A	73 dB
			32-3/16"D x 32-3/16"W x 36-11/16"H								
101100024	R5A5S36AKAWA	3	31-3/16"D x 31-3/16"W x 38-7/16"H		168 lbs	32" x 32"	7/8"	3/8"	16.7	25 A	75 dB
			32-3/16"D x 32-3/16"W x 40-9/16"H								
101100025	R5A5S42AKAWA	3.5	31-3/16"D x 31-3/16"W x 31-11/16"H		198 lbs	32" x 32"	7/8"	3/8"	32.8	50 A	76 dB
			32-3/16"D x 32-3/16"W x 33-1/4"H								
101100026	R5A5S48AKAWA	4	31-3/16"D x 31-3/16"W x 31-11/16"H		198 lbs	32" x 32"	7/8"	3/8"	32.8	50 A	76 dB
			32-3/16"D x 32-3/16"W x 33-1/4"H								
101100027	R5A5S60AKAWA	5	31-3/16"D x 31-3/16"W x 38-7/16"H		214 lbs	32" x 32"	7/8"	3/8"	32.8	50 A	75 dB
			32-3/16"D x 32-3/16"W x 40-9/16"H								

<sup>1</sup>) These are nominal values. Consult the AHRI Certified Products Directory for actual performance and required airflow.

An exact electric furnace model is REQUIRED to validate the a Split System AHRI Rating.

Furnaces and coil boxes are supplied by Clayton Homes Manufacturing and are not stocked by Style Crest.

## R-454B Outdoor Split System Heat Pump Condensers

Item #	Model	Nominal Tons <sup>1</sup>	Product Dimensions		Package Weight	Min. Pad Size	Suction Line Connection	Liquid Line Connection	MCA	MOP	Sound
			Packaging Dimensions								
101100014	R5H5S18AKAAA	1.5	31-3/16"D x 31-3/16"W x 31-11/16"H		167 lbs	32" x 32"	3/4"	3/8"	13.4	20 A	72 db
			32-3/16"D x 32-3/16"W x 33-1/4"H								
101100015	R5H5S24AKAAA	2	31-3/16"D x 31-3/16"W x 35-1/16"H		195 lbs	32" x 32"	3/4"	3/8"	14.5	25 A	71 db
			32-3/16"D x 32-3/16"W x 36-11/16"H								
101100016	R5H5S30AKAAA	2.5	31-3/16"D x 31-3/16"W x 38-7/16"H		188 lbs	32" x 32"	3/4"	3/8"	18.2	30 A	70 db
			32-3/16"D x 32-3/16"W x 40-1/16"H								
101100017	R5H5S36AKAAA	3	31-3/16"D x 31-3/16"W x 31-11/16"H		192 lbs	32" x 32"	7/8"	3/8"	20.3	30 A	76 db
			32-3/16"D x 32-3/16"W x 33-1/4"H								
101100018	R5H5S42AKAAA	3.5	31-3/16"D x 31-3/16"W x 31-11/16"H		223 lbs	32" x 32"	7/8"	3/8"	24.7	40 A	76 db
			32-3/16"D x 32-3/16"W x 33-1/4"H								
101100019	R5H5S48AKAAA	4	31-3/16"D x 31-3/16"W x 38-7/16"H		252 lbs	32" x 32"	7/8"	3/8"	32.8	50 A	76 db
			32-3/16"D x 32-3/16"W x 40-1/16"H								
101100020	R5H5S60AKAAA	5	35"D x 35"W x 35-1/2"H		254 lbs	35" x 35"	7/8"	3/8"	33.2	50 A	74 db
			36"D x 36"W x 37-3/16"H								

<sup>1</sup>) These are nominal values. Consult the AHRI Certified Products Directory for actual performance and required airflow.

An exact electric furnace model is REQUIRED to validate the a Split System AHRI Rating.

Furnaces and coil boxes are supplied by Clayton Homes Manufacturing and are not stocked by Style Crest.

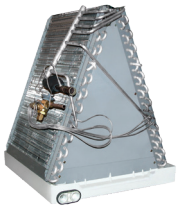
## R-454B Indoor Split System Coils for Electric Furnaces



Part No.	Model No.	Used With	Product Dimensions	Package Weight	Primary Drain Connection	Secondary Drain Connection	Suction Line Connection	Liquid Line Connection
			Packaging Dimensions					
101100006	NAVA53601CK	1.5-3T, Air Conditioner/Heat Pump R-454B Indoor Coil	20-3/4"D x 15"W x 16-1/4"H	28 lbs	3/4"-FPT	3/4"-FPT	7/8"	3/8"
			25-5/8"D x 17-1/8"W x 20-1/4"H					
101100007	NAVA54801CK	3.5-4T, Air Conditioner/Heat Pump R-454B Indoor Coil	20-5/8"D x 19"W x 24H	38.5 lbs	3/4"-FPT	3/4"-FPT	7/8"	3/8"
			25-3/4"D x 20-1/2"W x 25-3/4"H					
101100008	NAVA56001CK	.5-5T, Air Conditioner/Heat Pump R-454B Indoor Coil	20-1/2"D x 22-1/2"W x 29-1/2"H	48.5 lbs	3/4"-FPT	3/4"-FPT	7/8"	3/8"
			26-1/4"D x 25-3/8"W x 32"H					

An exact electric furnace model is **REQUIRED** to validate the a Split System AHRI Rating.  
Furnaces and coil boxes are supplied by Clayton Homes Manufacturing and are not stocked by Style Crest.

## R-454B Indoor Split System Coils for Gas Furnaces



Part No.	Model No.	Used With	Product Dimensions	Package Weight	Primary Drain Connection	Secondary Drain Connection	Suction Line Connection	Liquid Line Connection
			Packaging Dimensions					
101100009	EAA5X24M17A	1.5-2T, Air Conditioner/Heat Pump R-454B Indoor Coil, 817"W	20-1/16"D x 16-5/16"W x 17-1/4"H	31 lbs	3/4"-NPT	3/4"-NPT	5/8"	3/8"
			23-3/4"D x 18-7/16"W x 18-1/8"H					
101100011	EAA5X37M17A	2-3T, Air Conditioner/Heat Pump R-454B Indoor Coil, 817"W,	20-1/16"D x 16-5/16"W x 23-9/16"H	38.5 lbs	3/4"-NPT	3/4"-NPT	3/4"	3/8"
			23-3/4"D x 18-7/16"W x 22-1/4"H					
101100012	EAA5X48M21A	3.5-4T, Air Conditioner/Heat Pump R-454B Indoor Coil, C21"W	20-1/16"D x 19-13/16"W x 25-5/16"H	51 lbs	3/4"-NPT	3/4"-NPT	7/8"	3/8"
			23-3/4"D x 21-15/16"W x 26-3/16"H					
101100013	EAA5X61M21A	4-5Ton Air Conditioner/Heat Pump R-454B Indoor Coil, C21"W	20-1/16"D x 19-13/16"W x 31-1/2"H	63.5 lbs	3/4"-NPT	3/4"-NPT	7/8"	3/8"
			23-3/4"D x 21-15/16"W x 32-3/8"H					

Furnaces and coil boxes are supplied by Clayton Homes Manufacturing and are not stocked by Style Crest.

## Sweat Fit Line Sets



Part No.	Description	Used With	Suction Line Ø	Liquid Line Ø	Suction Line Insulation Thickness
13S7525	25 ft, Copper, 3/8" Ø Liquid Line, 3/4" Ø Suction Line, 1/2" Closed-cell Foam Insulated Suction Line	USED WITH: R5A4S, R5A5S, R5H5S	3/4"	3/8"	1/2"
13S7530	30 ft, Copper, 3/8" Ø Liquid Line, 3/4" Ø Suction Line, 1/2" Closed-cell Foam Insulated Suction Line	USED WITH: R5A4S, R5A5S, R5H5S	3/4"	3/8"	1/2"
13S7550	50 ft, Copper, 3/8" Ø Liquid Line, 3/4" Ø Suction Line, 1/2" Closed-cell Foam Insulated Suction Line	USED WITH: R5A4S, R5A5S, R5H5S	3/4"	3/8"	1/2"
13S7825	25 ft, Copper, 3/8" Ø Liquid Line, 7/8" Ø Suction Line, 1/2" Closed-cell Foam Insulated Suction Line	USED WITH: R5A4S, R5A5S, R5H5S	7/8"	3/8"	1/2"
13S7830	30 ft, Copper, 3/8" Ø Liquid Line, 7/8" Ø Suction Line, 1/2" Closed-cell Foam Insulated Suction Line	USED WITH: R5A4S, R5A5S, R5H5S	7/8"	3/8"	1/2"
13S7850	50 ft, Copper, 3/8" Ø Liquid Line, 7/8" Ø Suction Line, 1/2" Closed-cell Foam Insulated Suction Line	USED WITH: R5A4S, R5A5S, R5H5S	7/8"	3/8"	1/2"

*NOTE: Must seal ends of insulated line(s) upon installation.*

## R-454B Self-Contained Packaged Units



- **Convenient Service Access** makes installation and maintenance quicker and easier, with a design that can be serviced from both the side and front.
- **Reliability You Can Count On** from Carrier that has been the historical leader in HVAC products, which undergo some of the most detailed and stringent quality processes during assembly, including 100% run-testing.
- **Stay Cool Without Worry** when you use a SmartComfort™ package unit which carries a 5-year limited warranty on all functional parts, with an option to extend that coverage to 10-years parts-only if registered within 90-days of installation.

### Packaged Air Conditioners

Item #	Model	Nominal Tons <sup>1</sup>	Product Dimensions	Package Weight	Min. Pad Size	SEER2	EER2	Refrigerant Charge	Rated Cooling Output	MCA	MOP	Sound
			Packaging Dimensions									
PAM424000K000	PAM424000K000B	2	32"D x 51"W x 30-1/8"H 38"D x 57"W x 37"H	294 lbs	51" x 32"	13.4	10.6	48 Oz	23.6 MBH	14.0	20 A	70 dB
PAM430000K000	PAM430000K000B	2.5	32"D x 51"W x 30-1/8"H 38"D x 57"W x 37"H	299 lbs	51" x 32"	13.4	10.6	56 Oz	28 MBH	20.4	30 A	70 dB
PAM436000K000	PAM436000K000B	3	32"D x 51"W x 30-1/8"H 38"D x 57"W x 37"H	318 lbs	51" x 32"	13.4	10.6	71 Oz	34.4 MBH	22.3	35 A	76 dB
PAM442000K000	PAM442000K000B	3.5	32"D x 51"W x 34-1/8"H 38"D x 57"W x 41"H	342 lbs	51" x 32"	13.4	10.6	73.6 Oz	41.5 MBH	25.2	40 A	77 dB
PAM448000K000	PAM448000K000B	4	32"D x 51"W x 42-1/8"H 38"D x 57"W x 49"H	394 lbs	51" x 32"	13.4	10.6	80 Oz	47.5 MBH	30.9	50 A	78 dB
PAM460000K000	PAM460000K000B	5	32"D x 51"W x 42-1/8"H 38"D x 57"W x 49"H	409 lbs	51" x 32"	13.4	10.6	112 Oz	54 MBH	37.9	60 A	80 dB

<sup>1</sup>) These are nominal values. Consult the AHRI Certified Products Directory for actual performance and required airflow.

### Packaged Heat Pumps

Item #	Model	Nominal Tons <sup>1</sup>	Product Dimensions	Package Weight	Min. Pad Size	SEER2	EER2	HSPF2	Refrigerant Charge	Rated Cooling Output	Rated Heating Output	MCA	MOP	Sound
			Packaging Dimensions											
PHM424000K000	PHM424000K000B	2	32"D x 51"W x 30-1/8"H 38"D x 57"W x 37"H	303 lbs	51" x 32"	13.4	10.6	6.7	92.8 Oz	24 MBH	24 MBH	16.0	25 A	70 dB
PHM430000K000	PHM430000K000B	2.5	32"D x 51"W x 34-1/8"H 38"D x 57"W x 41"H	333 lbs	51" x 32"	13.4	10.6	6.7	108 Oz	28.6 MBH	28.6 MBH	20.4	30 A	72 dB
PHM436000K000	PHM436000K000B	3	32"D x 51"W x 34-1/8"H 38"D x 57"W x 41"H	335 lbs	51" x 32"	13.4	10.6	6.7	76 Oz	35 MBH	32.2 MBH	23.4	35 A	76 dB
PHM442000K000	PHM442000K000B	3.5	32"D x 51"W x 42-1/8"H 38"D x 57"W x 49"H	389 lbs	51" x 32"	13.4	10.6	6.7	104 Oz	40 MBH	40 MBH	25.7	40 A	76 dB
PHM448000K000	PHM448000K000B	4	32"D x 51"W x 42-1/8"H 38"D x 57"W x 49"H	408 lbs	51" x 32"	13.4	10.6	6.7	132 Oz	45.5 MBH	45 MBH	36.4	60 A	78 dB
PHM460000K000	PHM460000K000B	5	32"D x 51"W x 42-1/8"H 38"D x 57"W x 49"H	475 lbs	51" x 32"	13.4	10.6	6.7	168 Oz	54 MBH	56 MBH	39.9	60 A	79 dB

<sup>1</sup>) These are nominal values. Consult the AHRI Certified Products Directory for actual performance and required airflow.

# The Leader in Home Comfort - From the Experts in Manufactured Homes

In 1902 Willis Carrier invented the first modern air conditioner. Today, Carrier continues that spirit of innovation with over 9,000 active and pending patents. SmartComfort by Carrier is an exclusive HVAC offering for Clayton Built® homes.



## **APPLICATION FLEXIBILITY**

Modular and HUD Compliance for use in both conventional HUD (code) manufactured homes, and modular homes that must comply with municipal and state residential building codes.



## **HARDWORKING DEPENDABILITY**

Field-tested and durable with a dense coil guard, galvanized steel cabinet, and tough wire grille that combines protection with easier airflow.



## **FROM THE MANUFACTURED HOME EXPERTS**

When your SmartComfort unit comes from Style Crest, it's coming from the experts in mobile home comfort solutions, with installation service, warranty support, and deep understanding of the unique requirements of manufactured homes.

## R-454B Split Systems for FEVB Electric Furnaces



### FEVB

MULTI-POISE  
ELECTRIC  
FURNACE (UP/  
DOWNFLOW)

- **FEVB Refrigerant Flexibility** allows for AHRI ratings with R-410A or R-454B split systems.
- **Clayton Homes' Exclusive HVAC Line** used in their manufactured homes since 2019 and require unique, indoor coils in 3-residential footprints; not traditional 20"W x 24"D MH furnaces and coils.
- **Modular and HUD Compliance** for use in both conventional HUD (code) manufactured homes, and modular homes that must comply with municipal and state residential building codes.
- **Reliability You Can Count On** from Carrier that has been the historical leader in HVAC products, which undergo some of the most detailed and stringent quality processes during assembly, including 100% run-testing.
- **Stay Cool Without Worry** when you use a SmartComfort split system which carries a 5-year limited warranty on all functional parts, with an option to extend that parts-only coverage to 10-years if registered within 90-days of installation.

### NAVA5

1.5-5T INDOOR COILS



*(Furnace, coil,  
condenser, and  
accessories sold  
separately.)*

### R5

1.5-5T CONDENSERS



Furnace Model # <sup>1</sup>	System Type	Tons <sup>2</sup>	Coil Model	Coil Item #	Condenser Model	Condenser Item #	AHRI Cert #	Rated Cooling
FEVB0024* (17 1/2"W)	AC-North	1.5	NAVA53601CK	101100006	R5A4S18AKANA	R5A4S18AKANA	216102135	17.7 MBH
	AC-South	1.5	NAVA53601CK	101100006	R5A5S18AKAWA	101100021	214877330	18 MBH
	HP-All	1.5	NAVA53601CK	101100006	R5H5S18AKAAA	101100014	215440308	17.4 MBH
	AC-North	2	NAVA53601CK	101100006	R5A4S24AKANA	R5A4S24AKANA	216146025	23.6 MBH
	AC-South	2	NAVA53601CK	101100006	R5A5S24AKAWA	101100022	214878041	23.4 MBH
	HP-All	2	NAVA53601CK	101100006	R5H5S24AKAAA	101100015	214277535	22.6 MBH
FEVB0036* (17 1/2"W)	AC-North	2	NAVA53601CK	101100006	R5A4S24AKANA	R5A4S24AKANA	216146054	24.4 MBH
	AC-South	2	NAVA53601CK	101100006	R5A5S24AKAWA	101100022	214878080	24.4 MBH
	HP-All	2	NAVA53601CK	101100006	R5H5S24AKAAA	101100015	214277579	23.6 MBH
	AC-North	2.5	NAVA53601CK	101100006	R5A4S30AKANA	R5A4S30AKANA	216194882	29.4 MBH
	AC-South	2.5	NAVA53601CK	101100006	R5A5S30AKAWA	101100023	214878516	29.2 MBH
	HP-All	2.5	NAVA53601CK	101100006	R5H5S30AKAAA	101100016	215440348	28.2 MBH
	AC-North	3	NAVA53601CK	101100006	R5A4S36AKANA	R5A4S36AKANA	216249070	34 MBH
	AC-South	3	NAVA53601CK	101100006	R5A5S36AKAWA	101100024	214878883	33.2 MBH
	HP-All	3	NAVA53601CK	101100006	R5H5S36AKAAA	101100017	215440388	35 MBH
FEVB0048* (21"W)	AC-North	3	NAVA54801CK	101100007	R5A4S36AKANA	R5A4S36AKANA	216249099	36.4 MBH
	AC-South	3	NAVA54801CK	101100007	R5A5S36AKAWA	101100024	214878922	35.4 MBH
	HP-All	3	NAVA54801CK	101100007	R5H5S36AKAAA	101100017	214277624	36.4 MBH
	AC-North	3.5	NAVA54801CK	101100007	R5A4S42AKANA	R5A4S42AKANA	216299731	42.5 MBH
	AC-South	3.5	NAVA54801CK	101100007	R5A5S42AKAWA	101100025	214879300	42 MBH
	HP-All	3.5	NAVA54801CK	101100007	R5H5S42AKAAA	101100018	214277401	42 MBH
	AC-North	4	NAVA54801CK	101100007	R5A4S48AKANA	R5A4S48AKANA	216331431	46.5 MBH
	AC-South	4	NAVA54801CK	101100007	R5A5S48AKAWA	101100026	214875136	47.5 MBH
	HP-All	4	NAVA54801CK	101100007	R5H5S48AKAAA	101100019	214277358	47 MBH
FEVB0060* (24 1/2"W)	AC-North	3.5	NAVA56001CK	101100008	R5A4S42AKANA	R5A4S42AKANA	216299760	43.5 MBH
	AC-South	3.5	NAVA56001CK	101100008	R5A5S42AKAWA	101100025	214879339	43.5 MBH
	HP-All	3.5	NAVA56001CK	101100008	R5H5S42AKAAA	101100018	214277447	43 MBH
	AC-North	4	NAVA56001CK	101100008	R5A4S48AKANA	R5A4S48AKANA	216331460	48 MBH
	AC-South	4	NAVA56001CK	101100008	R5A5S48AKAWA	101100026	214879644	49 MBH
	HP-All	4	NAVA56001CK	101100008	R5H5S48AKAAA	101100019	214277491	48 MBH
	AC-North	5	NAVA56001CK	101100008	R5A4S60AKANA	R5A4S60AKANA	216345938	58.5 MBH
	AC-South	5	NAVA56001CK	101100008	R5A5S60AKAWA	101100027	214879856	58.5 MBH
	HP-All	5	NAVA56001CK	101100008	R5H5S60AKAAA	101100020	215441033	57.5 MBH

1) The applicable furnace model is REQUIRED to validate the provided Split System AHRI Rating (Cert. #).

2) These are nominal values, refer to the AHRI Certified Products Directory for detailed performance information.

## R-454B Split Systems for Gas Furnaces



**N9\***

GAS FURNACE (DOWN/UPFLOW)

**EAA5X**

1.5-5T INDOOR COILS



**R5**

1.5-5T CONDENSERS

*(Furnace, coil box, condenser, coil, and accessories sold separately.)*



- **N9\* Gas Furnace Refrigerant Flexibility** allows for AHRI ratings with R-410A or R-454B split systems.
- **Clayton Homes' Exclusive HVAC Line** used in their manufactured homes since 2019 and require unique, indoor coils in 2-residential footprints; not traditional 20"W x 24"D MH furnaces and coils.
- **Modular and HUD Compliance** for use in both conventional HUD (code) manufactured homes, and modular homes that must comply with municipal and state residential codes.
- **Reliability You Can Count On from Carrier** that has been the historical leader in HVAC products, which undergo some of the most detailed and stringent quality processes during assembly, including 100% run-testing.
- **Stay Cool Without Worry** when you use a SmartComfort split system which carries a 5-year limited warranty on all functional parts, with an option to extend that parts-only coverage to 10-years if registered within 90-days of installation.

Furnace Model	Type	Tons <sup>2</sup>	Coil Model	Coil Item#	Outdoor Model	Outdoor Item#	AHRI Cert #	Cooling
<b>N96MSM0401712A</b> (17 1/2" Wide) <sup>1</sup>	AC-North	1.5	EAA5X24M17A	101100009	R5A4S18AKANA	R5A4S18AKANA	216068309	17.4 MBH
	AC-South	1.5	EAA5X24M17A	101100009	R5A5S18AKAWA	101100021	214883531	17.9 MBH
	AC-North	2	EAA5X24M17A	101100009	R5A4S24AKANA	R5A4S24AKANA	216103752	22.4 MBH
	AC-North	2	EAA5X37M17A	101100011	R5A4S24AKANA	R5A4S24AKANA	216110190	23.4 MBH
	AC-South	2	EAA5X24M17A	101100009	R5A5S24AKAWA	101100022	214915325	22.4 MBH
	AC-South	2	EAA5X37M17A	101100011	R5A5S24AKAWA	101100022	214923465	23.4 MBH
	AC-North	2.5	EAA5X37M17A	101100011	R5A4S30AKANA	R5A4S30AKANA	216150677	28.4 MBH
	AC-South	2.5	EAA5X37M17A	101100011	R5A5S30AKAWA	101100023	214970321	28.6 MBH
	AC-North	3	EAA5X48M21A <sup>3</sup>	101100012	R5A4S36AKANA	R5A4S36AKANA	216205528 <sup>3</sup>	33.6 MBH
	AC-South	3	EAA5X48M21A <sup>3</sup>	101100012	R5A5S36AKAWA	101100024	215048747 <sup>3</sup>	33.2 MBH

Furnace Model	Type	Tons <sup>2</sup>	Coil Model	Coil Item#	Outdoor Model	Outdoor Item#	AHRI Cert #	Cooling
<b>N96MSM06Q1716A</b> (17 1/2" Wide) <sup>1</sup>	AC-North	1.5	EAA5X24M17A	101100009	R5A4S18AKANA	R5A4S18AKANA	216068365	17.5 MBH
	AC-South	1.5	EAA5X24M17A	101100009	R5A5S18AKAWA	101100021	214883605	17.9 MBH
	HP-All	1.5	EAA5X24M17A	101100009	R5H5S18AKAAA	101100014	214102521	17.3 MBH
	AC-North	2	EAA5X24M17A	101100009	R5A4S24AKANA	R5A4S24AKANA	216103808	22.8 MBH
	AC-North	2	EAA5X37M17A	101100011	R5A4S24AKANA	R5A4S24AKANA	216110246	24 MBH
	AC-South	2	EAA5X24M17A	101100009	R5A5S24AKAWA	101100022	214915399	22.8 MBH
	AC-South	2	EAA5X37M17A	101100011	R5A5S24AKAWA	101100022	214923539	24 MBH
	HP-All	2	EAA5X24M17A	101100009	R5H5S24AKAAA	101100015	214108139	22.4 MBH
	HP-All	2	EAA5X37M17A	101100011	R5H5S24AKAAA	101100015	214200807	23.4 MBH
	AC-North	2.5	EAA5X37M17A	101100011	R5A4S30AKANA	R5A4S30AKANA	216150733	28.8 MBH
	AC-South	2.5	EAA5X37M17A	101100011	R5A5S30AKAWA	101100023	214970395	28.8 MBH
	AC-North	3	EAA5X37M17A	101100011	R5A4S36AKANA	R5A4S36AKANA	216197491	34.4 MBH
	AC-North	3	EAA5X48M21A <sup>3</sup>	101100012	R5A4S36AKANA	R5A4S36AKANA	216205558 <sup>3</sup>	33.8 MBH
	AC-South	3	EAA5X37M17A	101100011	R5A5S36AKAWA	101100024	215031395	33.8 MBH
	AC-South	3	EAA5X48M21A <sup>3</sup>	101100012	R5A5S36AKAWA	101100024	215048785 <sup>3</sup>	33.4 MBH
	HP-All	3	EAA5X37M17A	101100011	R5H5S36AKAAA	101100017	214170831	35.2 MBH
	AC-North	3.5	EAA5X48M21A <sup>3</sup>	101100012	R5A4S42AKANA	R5A4S42AKANA	216254436 <sup>3</sup>	40 MBH
	AC-North	3.5	EAA5X61M21A <sup>3</sup>	101100013	R5A4S42AKANA	R5A4S42AKANA	216257940 <sup>3</sup>	41 MBH
	AC-South	3.5	EAA5X48M21A <sup>3</sup>	101100012	R5A5S42AKAWA	101100025	215102673 <sup>3</sup>	40 MBH
	AC-South	3.5	EAA5X61M21A <sup>3</sup>	101100013	R5A5S42AKAWA	101100025	215106917 <sup>3</sup>	41 MBH
	AC-North	4	EAA5X48M21A <sup>3</sup>	101100012	R5A4S48AKANA	R5A4S48AKANA	216300994 <sup>3</sup>	44.5 MBH
	AC-North	4	EAA5X61M21A <sup>3</sup>	101100013	R5A4S48AKANA	R5A4S48AKANA	216304374 <sup>3</sup>	46 MBH
	AC-South	4	EAA5X48M21A <sup>3</sup>	101100012	R5A5S48AKAWA	101100026	215159108 <sup>3</sup>	46 MBH
	AC-South	4	EAA5X61M21A <sup>3</sup>	101100013	R5A5S48AKAWA	101100026	215163139 <sup>3</sup>	47.5 MBH
<b>N96MSM08Q2120A</b> (21" Wide) <sup>1</sup>	AC-North	3	EAA5X48M21A	101100012	R5A4S36AKANA	R5A4S36AKANA	216205619	34.2 MBH
	AC-South	3	EAA5X48M21A	101100012	R5A5S36AKAWA	101100024	215048864	33.6 MBH
	HP-All	3	EAA5X48M21A	101100012	R5H5S36AKAAA	101100017	214118341	34 MBH
	AC-North	3.5	EAA5X48M21A	101100012	R5A4S42AKANA	R5A4S42AKANA	216254497	40 MBH
	AC-North	3.5	EAA5X61M21A	101100013	R5A4S42AKANA	R5A4S42AKANA	216258001	41 MBH
	AC-South	3.5	EAA5X48M21A	101100012	R5A5S42AKAWA	101100025	215102752	40 MBH
	AC-South	3.5	EAA5X61M21A	101100013	R5A5S42AKAWA	101100025	215106996	41 MBH
	AC-North	4	EAA5X48M21A	101100012	R5A4S48AKANA	R5A4S48AKANA	216301055	45 MBH
	AC-North	4	EAA5X61M21A	101100013	R5A4S48AKANA	R5A4S48AKANA	216304435	46.5 MBH
	AC-South	4	EAA5X48M21A	101100012	R5A5S48AKAWA	101100026	215159187	46.5 MBH
	AC-South	4	EAA5X61M21A	101100013	R5A5S48AKAWA	101100026	215163218	48 MBH
	AC-North	5	EAA5X61M21A	101100013	R5A4S60AKANA	R5A4S60AKANA	216333646	58 MBH
	AC-South	5	EAA5X61M21A	101100013	R5A5S60AKAWA	101100027	215197984	59 MBH
	<b>Any Furnace Model with a Time Delay Relay</b> (N9DSE / N95ESM, w/ Coil Box)	AC-North	1.5	EAA5X24M17A	101100009	R5A4S18AKANA	R5A4S18AKANA	216068974
AC-North		2	EAA5X24M17A	101100009	R5A4S24AKANA	R5A4S24AKANA	216104417	22.4 MBH
AC-North		2	EAA5X37M17A	101100011	R5A4S24AKANA	R5A4S24AKANA	216110855	23.2 MBH
AC-North		2.5	EAA5X37M17A	101100011	R5A4S30AKANA	R5A4S30AKANA	216151342	28.6 MBH
AC-North		3	EAA5X37M17A	101100011	R5A4S36AKANA	R5A4S36AKANA	216198100	34.2 MBH
AC-North		3	EAA5X48M21A	101100012	R5A4S36AKANA	R5A4S36AKANA	216206522	33.8 MBH
AC-North		3.5	EAA5X48M21A	101100012	R5A4S42AKANA	R5A4S42AKANA	216255305	40 MBH
AC-North		3.5	EAA5X61M21A	101100013	R5A4S42AKANA	R5A4S42AKANA	216258809	41 MBH
AC-North		4	EAA5X48M21A	101100012	R5A4S48AKANA	R5A4S48AKANA	216301791	45 MBH
AC-North		4	EAA5X61M21A	101100013	R5A4S48AKANA	R5A4S48AKANA	216305171	46.5 MBH
AC-North		5	EAA5X61M21A	101100013	R5A4S60AKANA	R5A4S60AKANA	216334096	57.5 MBH
AC-South		1.5	EAA5X24M17A	101100009	R5A5S18AKAWA	101100021	214870781	17.2 MBH
AC-South		2	EAA5X24M17A	101100009	R5A5S24AKAWA	101100022	214871257	22.4 MBH
AC-South		2	EAA5X37M17A	101100011	R5A5S24AKAWA	101100022	214877710	23.4 MBH
AC-South		2.5	EAA5X37M17A	101100011	R5A5S30AKAWA	101100023	214871990	28.8 MBH
AC-South		3	EAA5X37M17A	101100011	R5A5S36AKAWA	101100024	214872766	33.6 MBH
AC-South		3	EAA5X48M21A	101100012	R5A5S36AKAWA	101100024	214872918	33.2 MBH
AC-South		3.5	EAA5X48M21A	101100012	R5A5S42AKAWA	101100025	214873745	40 MBH
AC-South		3.5	EAA5X61M21A	101100013	R5A5S42AKAWA	101100025	214873823	41 MBH
AC-South		4	EAA5X61M21A	101100013	R5A5S48AKAWA	101100026	214874642	47.5 MBH
AC-South		5	EAA5X61M21A	101100013	R5A5S60AKAWA	101100027	214875271	58.5 MBH

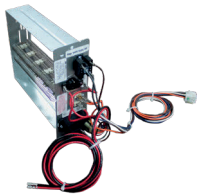
1) The furnace model is REQUIRED to validate the Split System AHRI Rating (Cert. #). Furnaces & coil boxes are pre-installed by the factory.

2) These are nominal values, refer to the AHRI Certified Products Directory for detailed performance information.

3) Match requires additional field-work to adapt the 21"W coil box to the 17 1/2"W furnace.

The following Style Crest HVAC Accessories are intended to complement SmartComfort equipment and complete a full system installation. Please contact your Style Crest Sales Representative for further application assistance.

### Packaged Unit Electric Heater Kits



Item #
<b>WZH0502X</b> 5kW, Resistance, Electric Heater Kit without Breakers for Carrier Packaged Units. Each. USED WITH: PAM424, PAM430, PAM436, PAM442, PAM460, PAM448, PHM442, PHM460, PHM448, PHM436
<b>WZH0702X</b> 7kW, Resistance, Electric Heater Kit without Breakers for Carrier Packaged Units. Each. USED WITH: PAM424, PAM430, PAM436, PAM442, PAM460, PAM448, PHM442, PHM460
<b>WZH1002X</b> 10kW, Resistance, Electric Heater Kit without Breakers for Carrier Packaged Units. Each. USED WITH: PAM424, PAM430, PAM436, PAM442, PAM460, PAM448, PHM460, PHM448, PHM436, PHM430, PHM424
<b>WZH1502SX</b> 15kW, Resistance, Electric Heater Kit with Breakers for Carrier Packaged Units. Each. USED WITH: PAM436, PAM442, PAM460, PAM448, PHM442, PHM436, PHM430, PHM424

### Wire Harness



Item #
<b>351896-701</b> Retrofit Kit, FEVA, Wire Harness & Labels, R-454B. Each. USED WITH: FEVA, NAVA5, EAA5X

### Flex Duct



Item #
<b>1101025</b> 10" x 25', R4.2, Flex Duct. Each.
<b>1101225</b> 12" x 25', R4.2, Flex Duct. Each.
<b>1101425</b> 14" x 25', R4.2, Flex Duct. Each.
<b>1181225</b> 12" x 25', R8, Flex Duct. Each.
<b>1181425</b> 14" x 25', R8, Flex Duct. Each.

### Return Air Boxes



Item #
<b>111220BRN</b> Grille-Only for Return Air Box w/ 115012 or 115014. Each. USED WITH: Flex Duct, PAM4, PHM4
<b>115012</b> 12" Ø Return Air Box with Grille and Filter. Each. USED WITH: Flex Duct, PAM4, PHM4
<b>115014</b> 14" Ø Return Air Box with Grille and Filter. Each. USED WITH: Flex Duct, PAM4, PHM4

### Duct Connectors



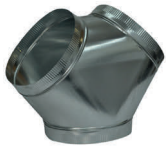
Item #
<b>901987A</b> 11-1/4" x 13-1/2" x 7/8"H Duct Connector. Each.
<b>901988A</b> 11-1/4" x 13-1/2" x 2"H Duct Connector. Each.
<b>901989A</b> 11-1/4" x 13-1/2" x 4-1/4"H Duct Connector. Each.
<b>901990A</b> 11-1/4" x 13-1/2" x 6-1/4"H Duct Connector. Each.
<b>901991A</b> 11-1/4" x 13-1/2" x 8-1/4"H Duct Connector. Each.
<b>901992A</b> 11-1/4" x 13-1/2" x 10-1/4"H Duct Connector. Each.
<b>901993A</b> 11-1/4" x 13-1/2" x 12-1/4"H Duct Connector. Each.

## Duct Transition



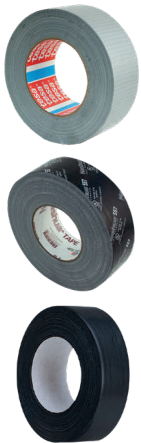
Item #
<b>1112108</b> 12"Ø to 10"Ø Round Duct Transition Reducer/Increaser. Each. USED WITH: Flex Duct, PAM4, PHM4
<b>1114128</b> 14"Ø to 12"Ø Round Duct Transition Reducer/Increaser. Each. USED WITH: Flex Duct, PAM4, PHM4

## Metal Wyes



Item #
<b>11121010</b> 12"Ø x 2-10"Ø Metal Wye Adapters. Each. USED WITH: Flex Duct, PAM4, PHM4 (Double Wide)
<b>11121212</b> 12"Ø x 2-12"Ø Metal Wye Adapters. Each. USED WITH: Flex Duct, PAM4, PHM4 (Double Wide)
<b>111412</b> 14"Ø x 2-12"Ø Metal Wye Adapters. Each. USED WITH: Flex Duct, PAM4, PHM4 (Double Wide)
<b>11141414</b> 14"Ø x 2-14"Ø Metal Wye Adapters. Each. USED WITH: Flex Duct, PAM4, PHM4 (Double Wide)

## Cloth Duct Tape



Item #
<b>602603</b> 2"W x 180'L, Silver, Cloth, Duct, Tape. Each (24/Cartron).
<b>602857B</b> 2"W x 180'L, UL181B-FX, Black, Cloth, 557, Duct Tape. Each (24/Cartron).
<b>602609</b> 2"W x 180'L, Black, Cloth, Duct Tape. Each (24/Cartron).

## Coated Fabric Tape



Item #
<b>602825</b> 28"W x 25'L, FLEX-MEND, Polyethylene Film, Tape Roll with Solid-coated Adhesive and Paper Backer, for Any Size Patch. Each (20/Cartron).
<b>60600</b> 6"W x 180'L, FLEX-MEND, Polyethylene Film, Tape Roll with Solid-coated Adhesive and Paper Backer. Intended to Repair Long Slits Around AC or Water Lines. Each (12/Cartron).

## Foil Tape



Item #
<b>602509</b> 2"W x 150'L, Aluminum Foil Tape with Liner. Each (24/Cartron).

## Galvanized Pipe Hanger Strap



Item #
<b>116507</b> 3/4" x 100', 28-Gauge, Galvanized Steel, Pipe Hanger Strap. Each (10/Box).

## Plastic Pipe Hanger Strap



Item #
<b>1113038</b> 3/4" x 100', Plastic Pipe Hanger Strap, 0.05" Thick. Each (20/Box).

## Woven Strap



Item #
<b>6014932</b> Woven Polypropylene Fabric Strap, 1-3/4" x 300'. Each. USED WITH: Flex Duct, PAM4, PHM4

## Stove Bolt



Item #
<b>651434</b> Pipe Strap (Stove) Bolt with Hex Nut, 3/4"L x 1/4". Box (100/Box).

## Plastic Drawbands



Item #
<b>110225</b> 36", White, Plastic, Drawbands. Each.
<b>110248</b> 48", White, Plastic, Drawbands. Each.

## Conduit Assemblies



Item #
<b>598071</b> 1/2" x 4', #10 Wire-Whip Conduit Kit HVAC equipment power connections. Each.

## Condensate Drain Trap



Item #
<b>5015411</b> 3/4" Slip x 3/4" Slip, White, PVC, Condensate Drain, P-Trap. Each.

## Electrical Box Connectors



Item #
<b>598042</b> 1/2" Straight Electrical Box Connector. Each.



<b>598043</b> 3/4" Straight Electrical Box Connector. Each.
---

<b>598045</b> 1/2", Electrical Box, 90°, Elbow Connector. Each.
---

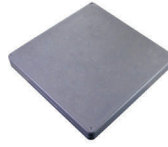
<b>598046</b> 3/4", Electrical Box, 90°, Elbow Connector. Each.
---

## Electrical Disconnect Box



Item #
<b>598064</b> Electrical Disconnect Box, Non-fused, 60 Amp. Each.

## Equipment Pads



Item #
<b>1124242D</b> 24" x 24" x 2", UV Plastic, Equipment Pad. Each.

<b>1124243D</b> 24" x 24" x 3", UV Plastic, Equipment Pad. Each.
--

<b>1133333D</b> 33" x 33" x 3", UV Plastic, Equipment Pad. Each.
--

<b>1136363D</b> 36" x 36" x 3", UV Plastic, Equipment Pad. Each.
--

<b>1136483D</b> 36" x 48" x 3", UV Plastic, Equipment Pad. Each.
--



<b>1145583D</b> 45" x 58" x 3", 33lb, UV Plastic, Equipment Pad. Each.
--



<b>H3652-4</b> 36" x 52" x 4", 140lb, Concrete, Hurricane-150MPH, Equipment Pad. Each.
--

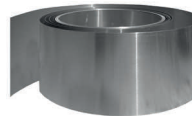
<b>H3865-4</b> 38" x 65" x 4", 170lb, Concrete, Hurricane-150MPH, Equipment Pad. Each.
--

## Equipment Riser



Item #
<b>110006</b> 6" Pad-mount Heat Pump Riser. (4+ required per unit) Each. USED WITH: R5H5S, PHM4

## Flashing



Item #
<b>60850</b> 8" x 50', Aluminum, Flashing. Each.

<b>601050</b> 10" x 50', Aluminum, Flashing. Each (6/Box).
--

<b>6010501</b> 10" x 50' Galvanized Steel Flashing. Each. Each (6/Box).
---

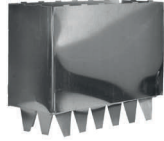
### Metal Registers

	Item #
	<b>11CL410B</b> 4" x 10", Brown, Metal, Register. Each.
	<b>11CL410W</b> 4" x 10", White, Metal, Register. Each.
	<b>11CL412B</b> 4" x 12", Brown, Metal, Register. Each.
	<b>11CL412W</b> 4" x 12", White, Metal, Register. Each.
	<b>11CL48B</b> 4" x 8", Brown, Metal, Register. Each.
	<b>11CL48W</b> 4" x 8", White, Metal, Register. Each.

### Plastic Registers

	Item #
	<b>1178401</b> 4" x 10", White, Plastic, Register. Each.
	<b>1178407</b> 4" x 10", Brown, Plastic, Register. Each.
	<b>1178481</b> 4" x 8", White, Plastic, Register. Each.
	<b>1178487</b> 4" x 8", Brown, Plastic, Register. Each.

### Register Collars

	Item #
	<b>114106</b> 10"W x 4"L x 6"D Register Supply Collar. Each.
	<b>11486</b> 8"W x 4"L x 6"D Register Supply Collar. Each.

### Thermostats

	Item #
	<b>111001</b> Cool-Only Thermostat. (No Changeover). Each.
	<b>111002</b> Heat-Only Thermostat. (No Changeover). Each.
	<b>111003</b> 1Ht-1CI, MCO-Manual Changeover, Heat and Cool, 5-Wire, Thermostat. Each.
	<b>111004</b> 2Ht-1CI, MCO, Digital, Programmable, Heat Pump, Thermostat. Each.
	<b>111005</b> 2Ht-1CI, MCO, Digital, Non-Programmable, Heat Pump, Thermostat. Each.
	<b>111006</b> 1Ht-1CI, MCO, Digital, Programmable, Thermostat. Each.
	<b>111007</b> 1Ht-1CI, MCO, Digital, Non-Programmable, Thermostat. Each.
	<b>111010</b> 2Ht-1CI, MCO/ACO, Digital, Programmable, Dual Fuel Capable, LCD Touchscreen, Thermostat. Each.



# is Nationwide



ALBUQUERQUE, NM · ATLANTA, GA · CHESTERFIELD, MI · DENVER, CO · FENTON, MO · FLINT, MI  
 FOND DU LAC, WI · FORT MYERS, FL · FREMONT, OH · FT. WORTH, TX · GOSHEN, IN · GRAND RAPIDS, MI  
 HAMMOND, LA · HOUSTON, TX · INDIANAPOLIS, IN · JACKSONVILLE, FL · LAKE CITY, FL · LAKELAND, FL · LANSING, MI  
 LAS CRUCES, NM · LAS VEGAS, NV · LENEXA, KS · ODESSA, TX · OKLAHOMA CITY, OK  
 PANAMA CITY, FL · PHOENIX, AZ · ROMULUS, MI · SACRAMENTO, CA · SAN ANTONIO, TX · TALLADEGA, AL  
 TAYLOR, MI · TULSA, OK · TYLER, TX · WACO, TX · WICHITA, KS · WINSTON-SALEM, NC



[www.stylecrestinc.com](http://www.stylecrestinc.com) | 800.945.4440

