



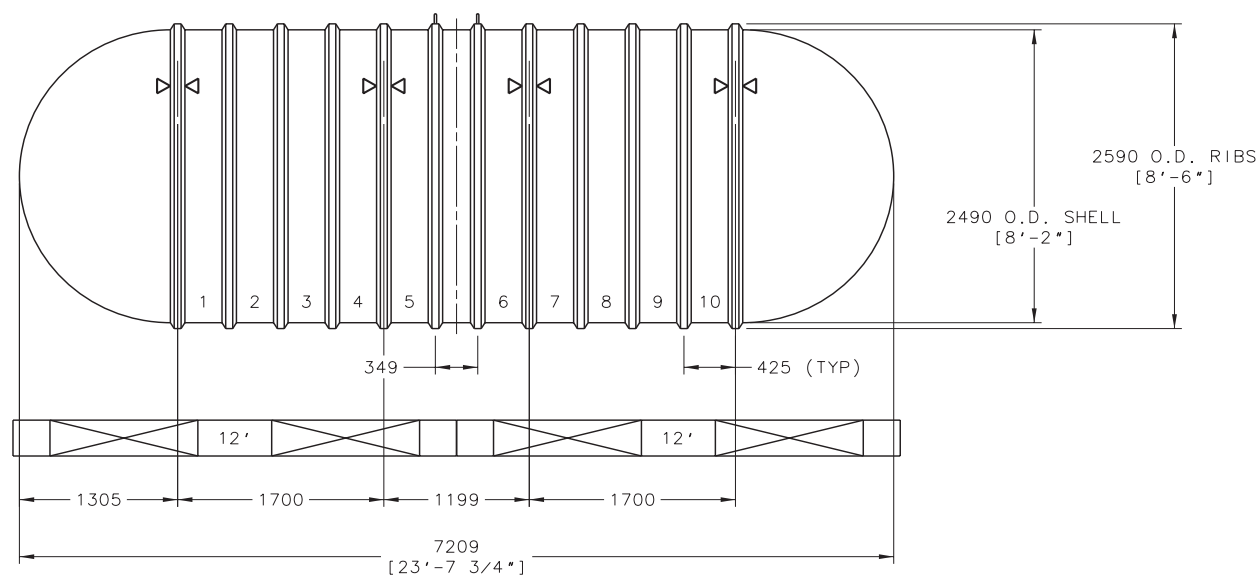
if it flows,
we go with it

1.800.665.4499
barrplastics.com

NOTE:

- 1 - All dimensions are shown in mm.
Dimensions in brackets are in feet/inches.
- 2 - Optional prefabricated engineered concrete deadmen shown.
- 3 - Actual capacity - 30,701 LITRES/8,110 US gals.

REVISION DESCRIPTION							
0							
DRN	DATE	CHK'D	DATE	APPR'D	DATE		



ZCL COMPOSITES INC.							
DRN	DATE	TITLE					
DRN	DATE	8'-6" DIA SW-ZCL					
CHK'D	DATE	CAP. 30,000 LITRES					
APPR'D	DATE	8,000 US GALS					
JWL	DATE	DR. NUMBER	REV	DR. SIZE			
SCALE: 1/2" = 1'-0"		634-608	00	C			