

# EcoBloc Inspect Smart

Product Specifications  
& Technical Data



Stormwater  
Management  
Systems

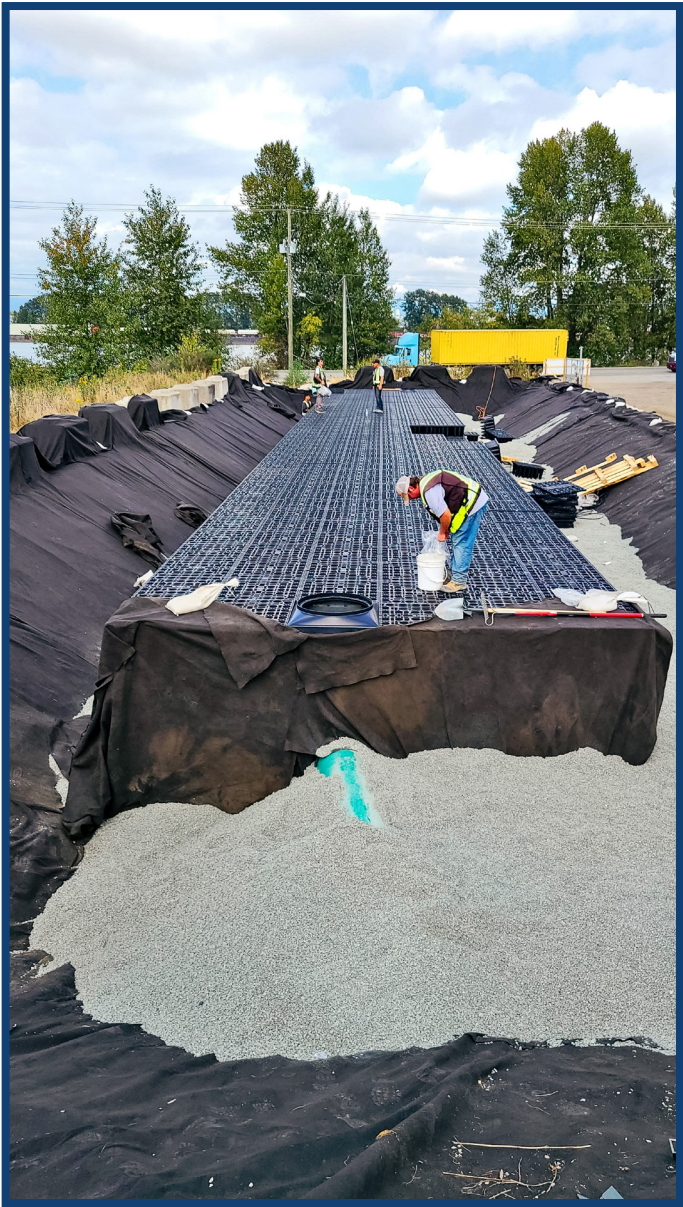
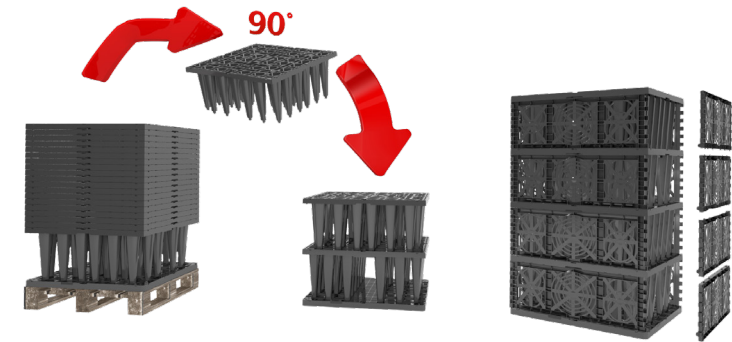


# GRAF EcoBloc Inspect Smart Series

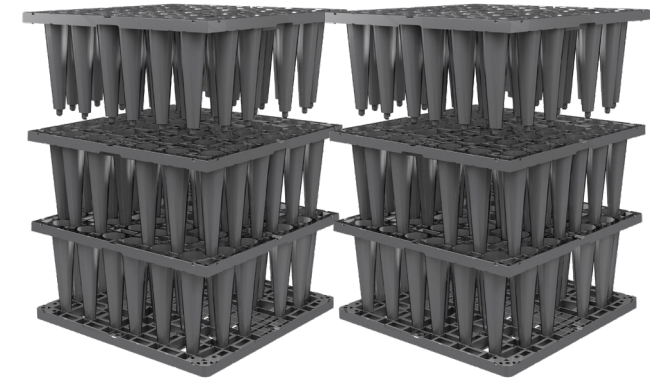
The next generation of GRAF Infiltration & Detention modules



## Space Savings



## Labour Savings



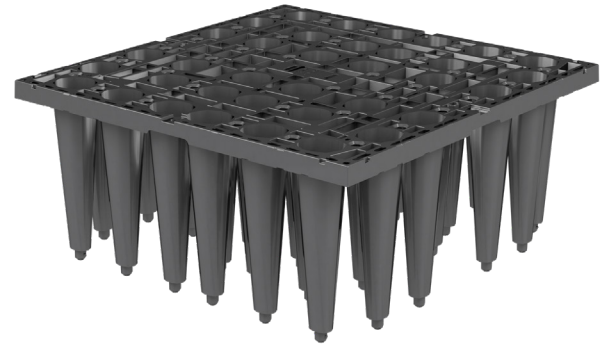
## Infiltration & Detention Modules

### GRAF EcoBloc Inspect Smart

The standard module for implementing large storage volumes in a typical installation window.

- Suitable for HGV loading up to HS-25 as per AASHTO standards.
- 96% storage coefficients.
- Can be inspected.
- Can be cleaned at high pressure.
- Maximum installation depth of up to 5.0m/16.4ft.

Volume [litres/gallons]	Length [mm/in]	Width [mm/in]	Height [mm/in]	Weight [kg/lb]	Colour	Item no.
211/55.7	800/31.5	800/ 31.5	330/13	10/22	Black	402500

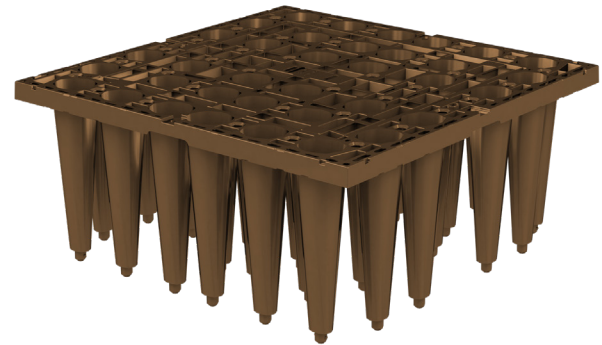


### GRAF EcoBloc Inspect Smart Plus

The reinforced module for implementing large storage volumes with shallow earth coverings or deep installation depths.

- Suitable for HGV loading up to HS-25 as per AASHTO standards.
- 95% storage coefficients.
- Can be inspected.
- Can be cleaned at high pressure.
- Maximum installation depth of up to 6.0m/19.6ft.

Volume [litres/gallons]	Length [mm/in]	Width [mm/in]	Height [mm/in]	Weight [kg/lb]	Colour	Item no.
211/55.7	800/31.5	800/ 31.5	330/13	11.5/25.4	Brown	402530

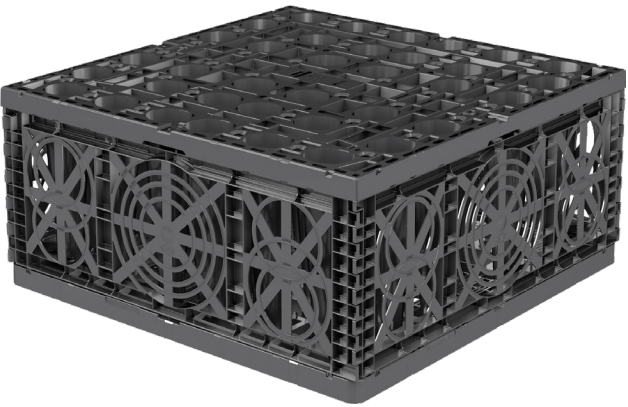


### GRAF EcoBloc Inspect Smart Ultra

The high-performance module for storage volumes with very deep earth coverings or installation depths.

- High load areas over HS-25 loading or installation with deep earth covering.
- 95% storage coefficients.
- Can be inspected.
- Can be cleaned at high pressure.
- Maximum installation depth of up to 7.5m/24.6ft.

Volume [litres/gallons]	Length [mm/in]	Width [mm/in]	Height [mm/in]	Weight [kg/lb]	Colour	Item no.
211/55.7	800/31.5	800/ 31.5	330/13	12/26.5	Black	402560



## Accessories

### EcoBloc Connectors

For the horizontal connection of multiple EcoBloc modules and base plates to one another.

Item no. 402015	10 Units
Item no. 402018	25 Units
Item no. 402020	50 Units
Item no. 402025	200 Units



### EcoBloc Pipe Adapter Plates

Pipe adapter plates for pipe connections.

EPA04	4" Dia.	EPA12	12" Dia.
EPA06	6" Dia.	EPA15-PVC	15" Dia.
EPA08	8" Dia.	EPA18-PVC	18" Dia.
EPA10	10" Dia.	EPA21-PVC	21" Dia.






EcoBloc Inspect Smart Plus shaft

Connection Surfaces	up to DN 250
Clear Width	400 mm
Inspection Crossways Possible	No
Fully Integrated Shaft System	Yes
Compatibility	Smart   Plus
Usable as Choke Drain Shaft	No

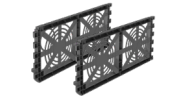
EcoBloc Inspect Smart Plus shaft

 **EcoBloc Inspect Smart Plus shaft cover plate**  
Universal component that forms the top connection to all EcoBloc Inspect Smart Plus Shafts.

Item	Weight [kg/lbs]	Colour	Item no.
EcoBloc Inspect Smart Plus shaft cover plate	5/11	Black	450160

 **EcoBloc Inspect Smart Plus shaft**  
The reinforced module for implementing large storage volumes with shallow earth coverings or deep installation depths.

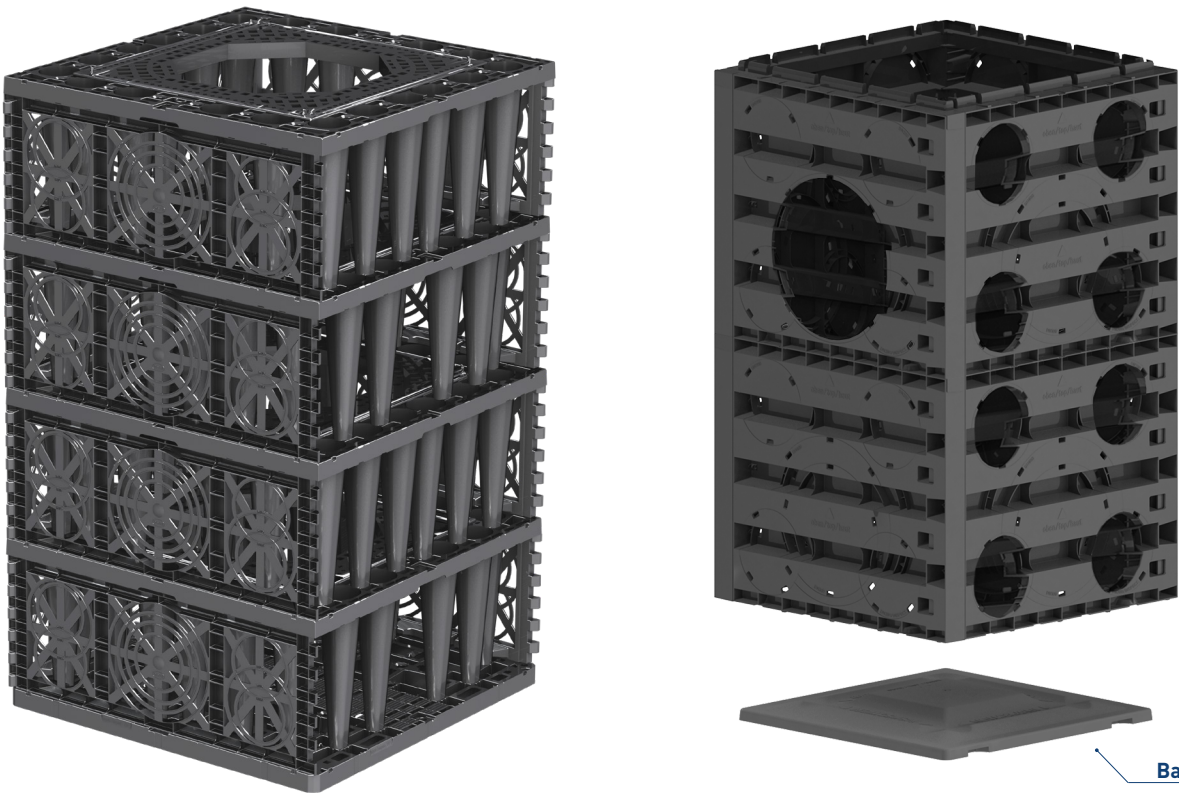
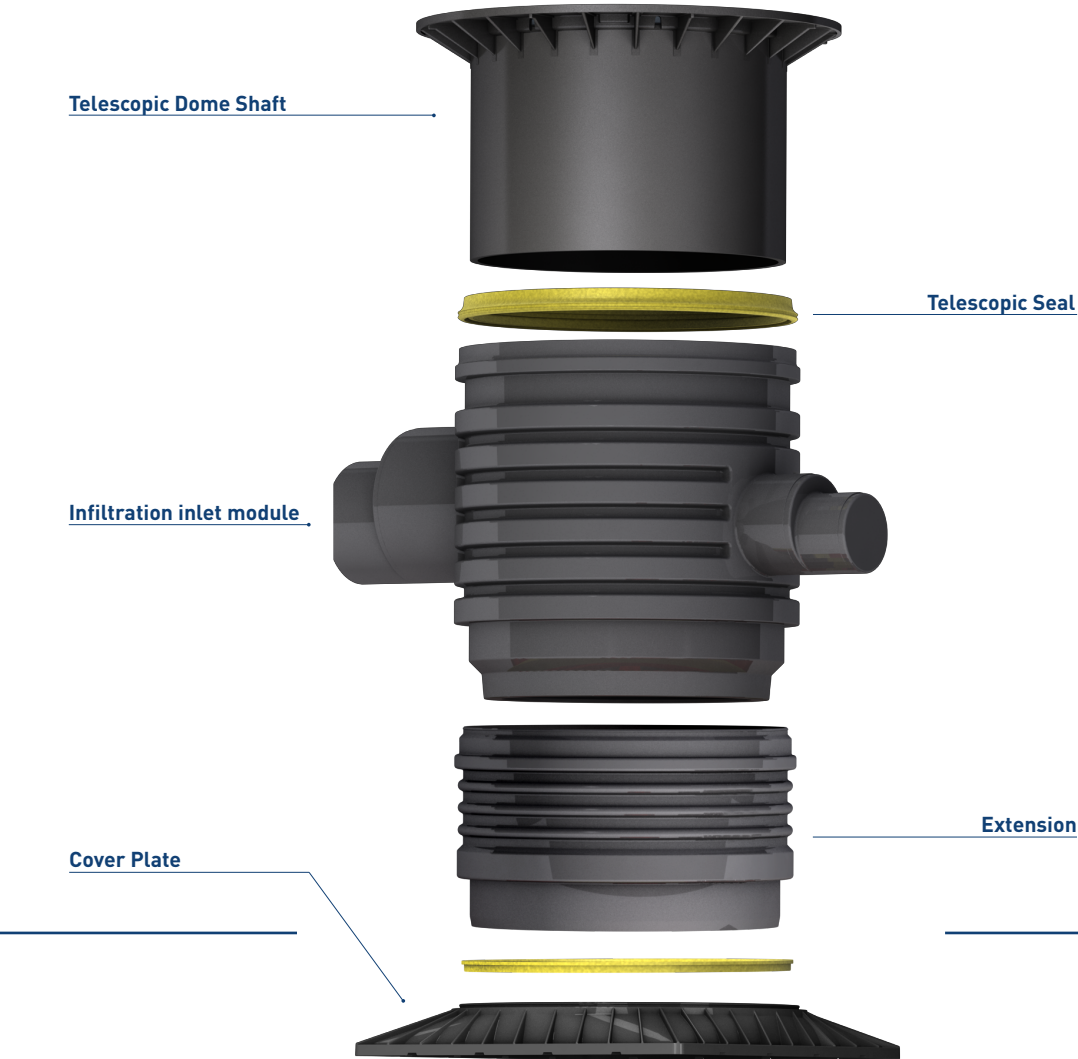
Volume [litres/gallons]	Length [mm/in]	Width [mm/in]	Height [mm/in]	Weight [kg/lbs]	Colour	Item no.
211/ 55.74	800/31.5	800/31.5	330/13	8.5/18.74	Black	450151

 **EcoBloc Inspect Smart end plates**  
The reinforced module for implementing large storage volumes with shallow earth coverings or deep installation depths.

Item	Colour	Item no.
EcoBloc Inspect Smart end plates (set of 2)	Black	402503

 **EcoBloc Inspect Smart base plate**  
Base plate for constructing a system using the EcoBloc Inspect Smart family.

Volume [litres/gallons]	Length [mm/in]	Width [mm/in]	Height [mm/in]	Weight [kg/lbs]	Colour	Item no.
24/6.34	800/31.5	800/31.5	40/1.6	4/8.82	Black	402501



Vario 800 Flex Shaft

Connection Surfaces	up to DN 400
Clear Width	600 mm
Inspection Crossways Possible	Yes
Fully Integrated Shaft System	Yes
Compatibility	Smart   Plus   Ultra
Usable as Choke Drain Shaft	Yes

Vario 800 Flex shaft

 **Vario 800 Flex | Type 1**  
Shaft body for one or more layers of an EcoBloc system.

Volume [litres/gallons]	Length [mm/in]	Width [mm/in]	Height [mm/in]	Weight [kg/lbs]	Colour	Item no.
230/60.76	800/31.5	800/31.5	355/14	16/35.27	Grey	450050

 **Vario 800 Flex | Type 2**  
Shaft body for two or more layers of an EcoBloc system.

Volume [litres/gallons]	Length [mm/in]	Width [mm/in]	Height [mm/in]	Weight [kg/lbs]	Colour	Item no.
420/111	800/31.5	800/31.5	660/26	27/59.52	Grey	450051

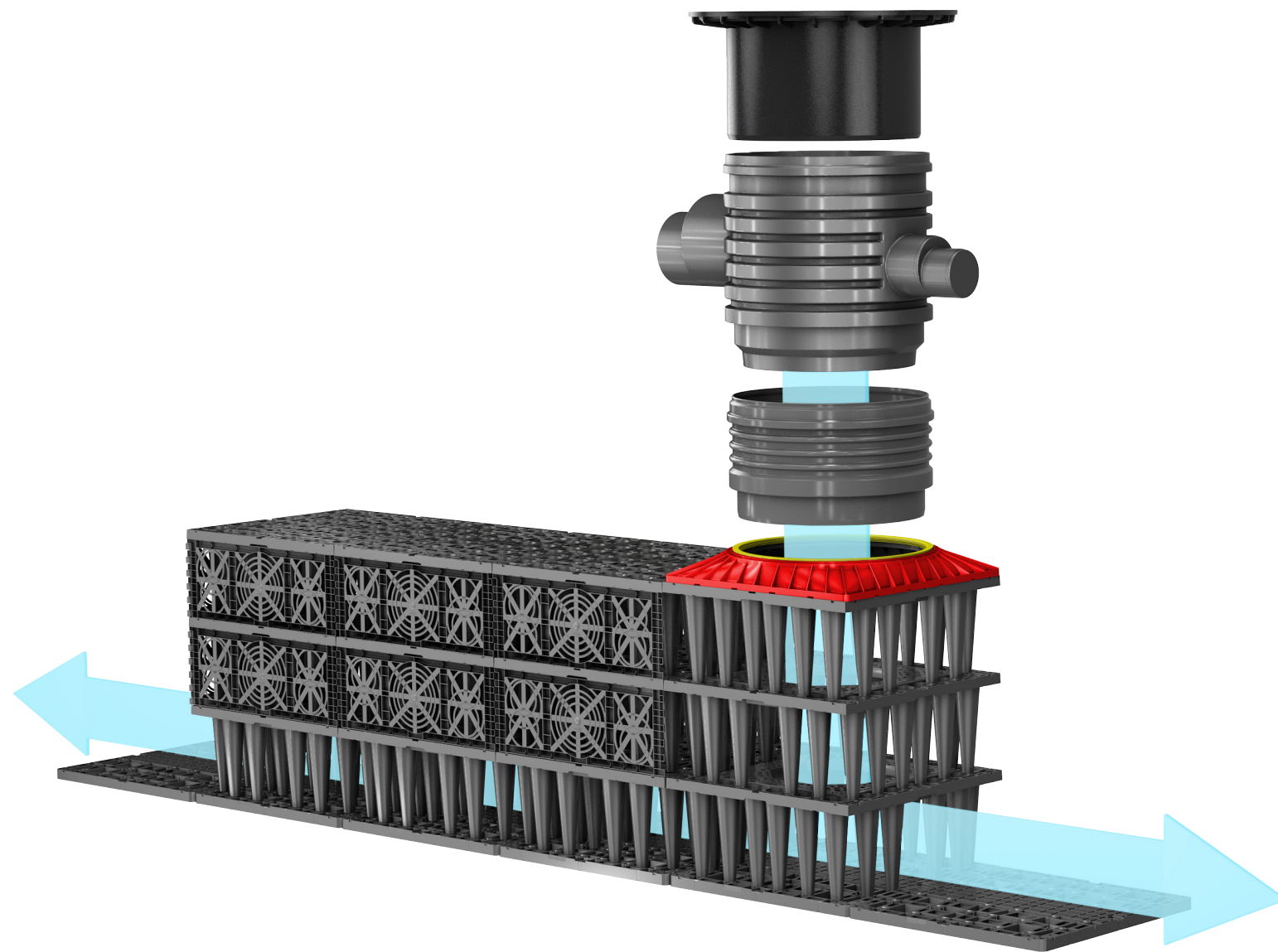
 **Vario 800 Flex cover & base plate set**  
Base and cover plate for Vario 800 Flex shaft.

Item	Colour	Item no.
Vario 800 Flex cover and base plate set	Grey	450052



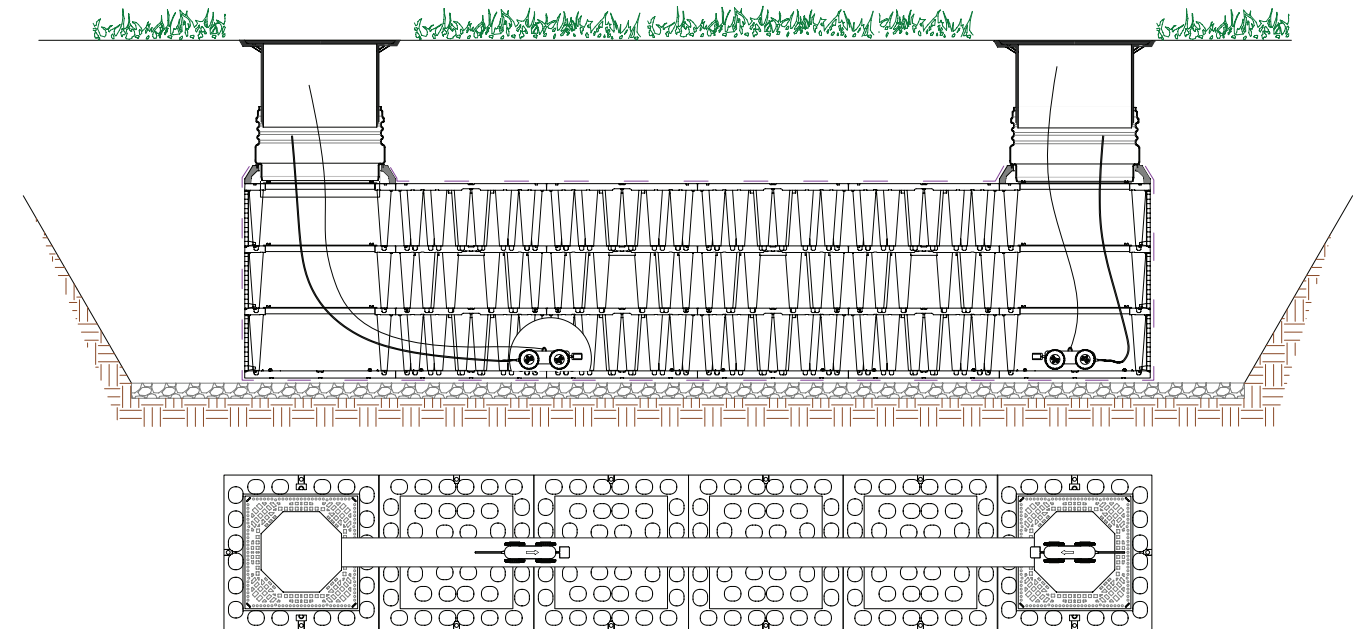
# Inspectable and Cleanable

Open internal structure for inspection & cleaning



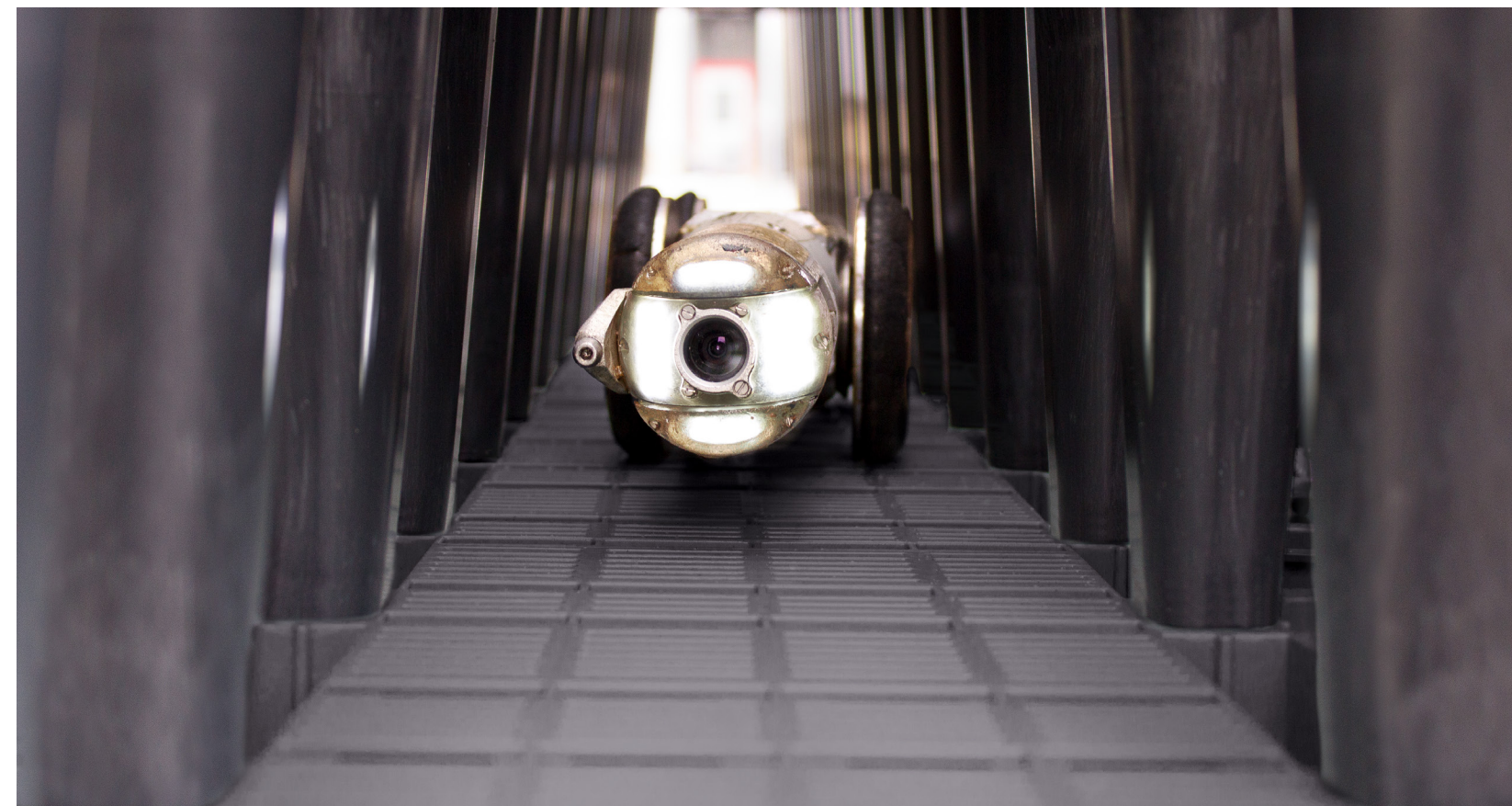
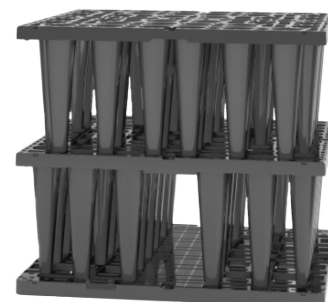
## Orientation of the inspection channels

The inspection channels enable comprehensive inspection and flushing of the entire system. For this purpose, the inspection channels should run parallel to the long side of the system and form a continuous tunnel. Access is usually gained via the inspection shaft end-face for both flushing nozzles and inspection cameras.



## Cleanability of the Inspect Smart System

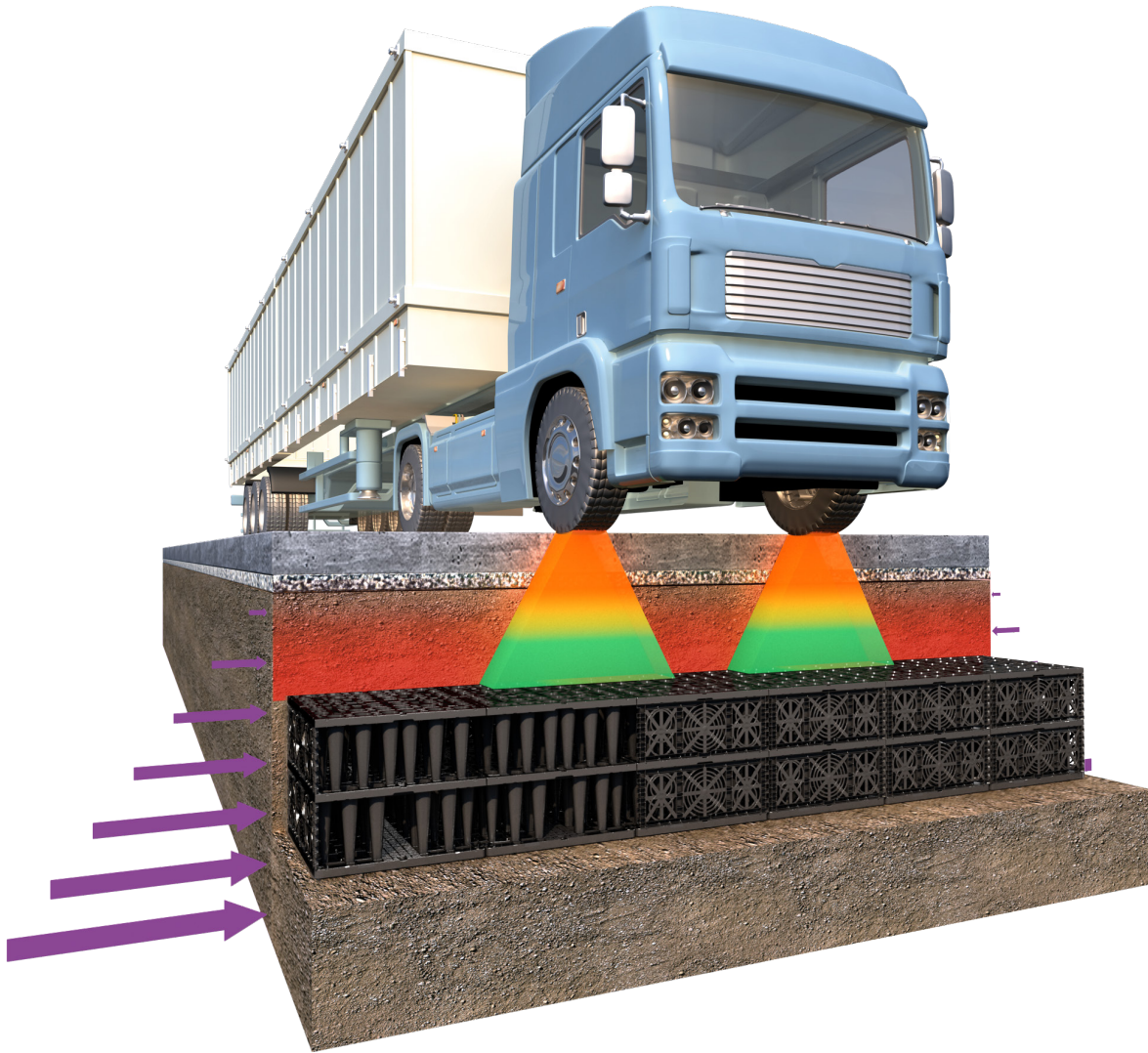
EcoBloc Inspect Smart systems have an integrated inspection channels that allow for easy inspection and maintenance. Flushing the entire system is accomplished by introducing washing nozzles into the system on one side of the tank and flushing any dirt and debris towards a suction hose on the opposite side of the system.





# Load Distribution

## Vertical & Lateral Resistances



### Patented design

The design of Ecobloc Inspect Smart, Plus and Ultra is optimized for use as an underground structure for stormwater infiltration and detention. The patented pillar arrangement and the deck structure is optimized to spread vertical pressure evenly and precisely throughout the entire system.

### Repeating Pattern

The recurring constant pattern of the EcoBloc Inspect Smart Modules provide a stability advantage in terms of lateral resistance. Each layer provides a suitable deck structure at the same intervals. This becomes extremely important in deep installation depths where considerable lateral forces can occur.



1.800.665.4499  
barrplastics.com