

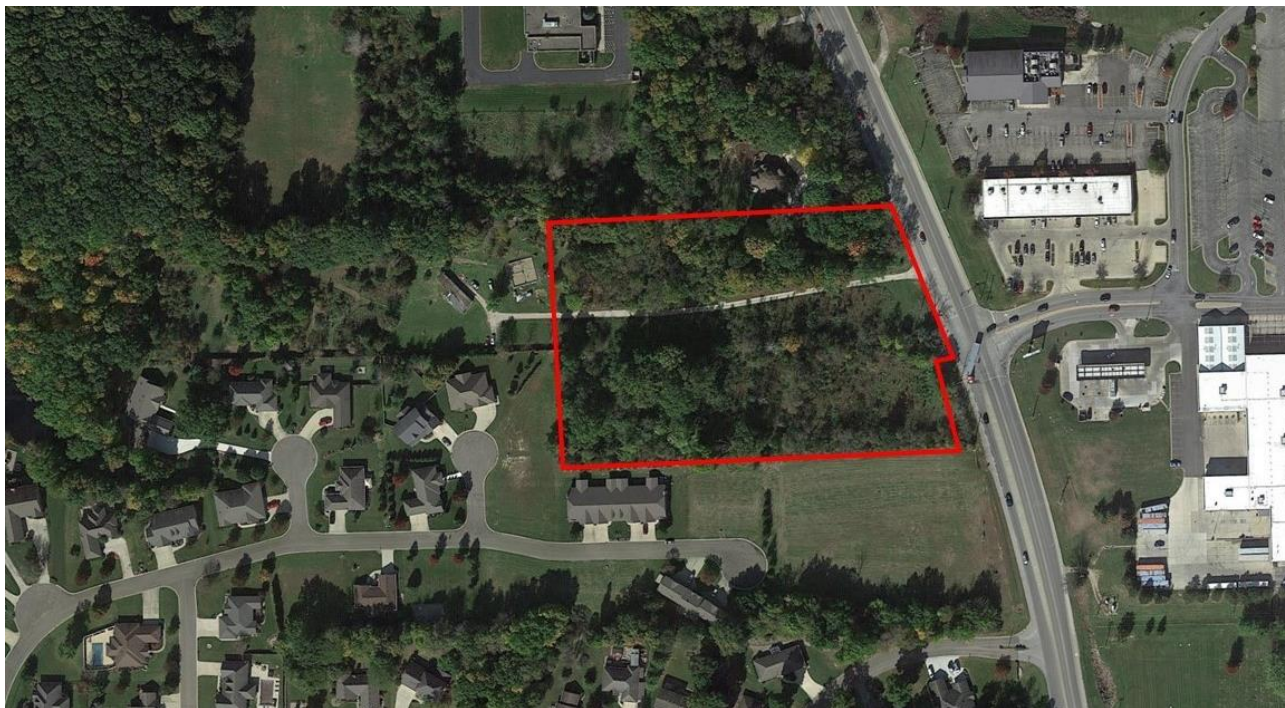


**COLDWELL BANKER
COMMERCIAL**
DEVONSHIRE
REALTY

NORTH RETAIL DISTRICT DEVELOPMENT PARCEL

\$445,000.00

FOR SALE



22864 St. Rte. 1,

Danville, IL 61834

5.1 AC

LAND

SALE PRICE

\$445,000.00

LOT SIZE

5.1 Acres

ZONING

North Parcel: B-3 General
Business - South Parcel: R-1
Residential Single Family

TAX PIN

18-17-200-049

RE TAX

\$4,563.60 - 2012

PROPERTY DESCRIPTION

5 acres with 404' frontage along N. Vermilion (St. Rte 1).
Property is broker owned

AREA DESCRIPTION

Danville's North Retail Corridor, located across from entrance to Wal Mart development.



LARRY KUCHEFSKI

Illinois/Indiana Licensed Designated Managing Broker
217-918-0871
lk@cbcdr.com



**COLDWELL BANKER COMMERCIAL
DEVONSHIRE REALTY**

201 W Springfield Ave. 11th Floor
Champaign, IL 61820
217-352-7712

©2023 Coldwell Banker. All Rights Reserved. Coldwell Banker Commercial® and the Coldwell Banker Commercial logos are trademarks of Coldwell Banker Real Estate LLC. The Coldwell Banker® System is comprised of company owned offices which are owned by a subsidiary of Anywhere Advisors LLC and franchised offices which are independently owned and operated. The Coldwell Banker System fully supports the principles of the Equal Opportunity Act.



**COLDWELL BANKER
COMMERCIAL**
DEVONSHIRE
REALTY

NORTH RETAIL DISTRICT DEVELOPMENT PARCEL

\$445,000.00

FOR SALE

AERIAL



LARRY KUCHEFSKI

Illinois/Indiana Licensed Designated Managing Broker

217-918-0871

lk@cbsdr.com



**COLDWELL BANKER COMMERCIAL
DEVONSHIRE REALTY**

201 W Springfield Ave. 11th Floor
Champaign, IL 61820
217-352-7712

©2023 Coldwell Banker. All Rights Reserved. Coldwell Banker Commercial® and the Coldwell Banker Commercial logos are trademarks of Coldwell Banker Real Estate LLC. The Coldwell Banker® System is comprised of company owned offices which are owned by a subsidiary of Anywhere Advisors LLC and franchised offices which are independently owned and operated. The Coldwell Banker System fully supports the principles of the Equal Opportunity Act.