



# Demographic and Income Comparison Profile

607 S 4th St, Chillicothe, Illinois, 61523  
Rings: 1, 3, 5 mile radii

Prepared by Esri  
Latitude: 40.90177  
Longitude: -89.49481

	1 mile	3 miles	5 miles
<b>Census 2010 Summary</b>			
Population	2,009	8,472	11,492
Households	818	3,494	4,646
Families	568	2,349	3,259
Average Household Size	2.42	2.40	2.45
Owner Occupied Housing Units	634	2,689	3,746
Renter Occupied Housing Units	184	805	900
Median Age	41.6	40.8	41.6
<b>2016 Summary</b>			
Population	2,026	8,539	11,573
Households	828	3,534	4,696
Families	568	2,346	3,257
Average Household Size	2.41	2.39	2.44
Owner Occupied Housing Units	624	2,643	3,698
Renter Occupied Housing Units	204	891	998
Median Age	42.7	41.8	42.8
Median Household Income	\$54,920	\$54,044	\$57,899
Average Household Income	\$67,712	\$66,118	\$72,853
<b>2021 Summary</b>			
Population	2,036	8,572	11,616
Households	832	3,550	4,717
Families	566	2,339	3,250
Average Household Size	2.41	2.39	2.44
Owner Occupied Housing Units	624	2,643	3,703
Renter Occupied Housing Units	208	906	1,014
Median Age	43.4	42.6	43.6
Median Household Income	\$55,173	\$53,714	\$60,008
Average Household Income	\$71,772	\$69,734	\$77,472
<b>Trends: 2016-2021 Annual Rate</b>			
Population	0.10%	0.08%	0.07%
Households	0.10%	0.09%	0.09%
Families	-0.07%	-0.06%	-0.04%
Owner Households	0.00%	0.00%	0.03%
Median Household Income	0.09%	-0.12%	0.72%

Source: U.S. Census Bureau, Census 2010 Summary File 1. Esri forecasts for 2016 and 2021.



# Demographic and Income Comparison Profile

607 S 4th St, Chillicothe, Illinois, 61523  
Rings: 1, 3, 5 mile radii

Prepared by Esri  
Latitude: 40.90177  
Longitude: -89.49481

2016 Households by Income	1 mile		3 miles		5 miles	
	Number	Percent	Number	Percent	Number	Percent
<\$15,000	61	7.4%	258	7.3%	324	6.9%
\$15,000 - \$24,999	72	8.7%	338	9.6%	403	8.6%
\$25,000 - \$34,999	75	9.1%	332	9.4%	414	8.8%
\$35,000 - \$49,999	147	17.8%	632	17.9%	740	15.8%
\$50,000 - \$74,999	207	25.0%	866	24.5%	1,109	23.6%
\$75,000 - \$99,999	117	14.1%	514	14.5%	686	14.6%
\$100,000 - \$149,999	99	12.0%	404	11.4%	651	13.9%
\$150,000 - \$199,999	37	4.5%	136	3.8%	254	5.4%
\$200,000+	13	1.6%	54	1.5%	114	2.4%
Median Household Income	\$54,920		\$54,044		\$57,899	
Average Household Income	\$67,712		\$66,118		\$72,853	
Per Capita Income	\$28,143		\$27,801		\$29,851	

2021 Households by Income	1 mile		3 miles		5 miles	
	Number	Percent	Number	Percent	Number	Percent
<\$15,000	65	7.8%	279	7.9%	345	7.3%
\$15,000 - \$24,999	73	8.8%	348	9.8%	407	8.6%
\$25,000 - \$34,999	125	15.0%	537	15.1%	655	13.9%
\$35,000 - \$49,999	118	14.2%	493	13.9%	551	11.7%
\$50,000 - \$74,999	126	15.1%	580	16.3%	811	17.2%
\$75,000 - \$99,999	149	17.9%	615	17.3%	767	16.3%
\$100,000 - \$149,999	114	13.7%	466	13.1%	731	15.5%
\$150,000 - \$199,999	45	5.4%	167	4.7%	314	6.7%
\$200,000+	16	1.9%	66	1.9%	135	2.9%
Median Household Income	\$55,173		\$53,714		\$60,008	
Average Household Income	\$71,772		\$69,734		\$77,472	
Per Capita Income	\$29,777		\$29,316		\$31,742	

**Data Note:** Income is expressed in current dollars.

**Source:** U.S. Census Bureau, Census 2010 Summary File 1. Esri forecasts for 2016 and 2021.



# Demographic and Income Comparison Profile

607 S 4th St, Chillicothe, Illinois, 61523  
 Rings: 1, 3, 5 mile radii

Prepared by Esri  
 Latitude: 40.90177  
 Longitude: -89.49481

2010 Population by Age	1 mile		3 miles		5 miles	
	Number	Percent	Number	Percent	Number	Percent
Age 0 - 4	111	5.5%	506	6.0%	672	5.8%
Age 5 - 9	131	6.5%	553	6.5%	759	6.6%
Age 10 - 14	126	6.3%	539	6.4%	740	6.4%
Age 15 - 19	150	7.5%	607	7.2%	820	7.1%
Age 20 - 24	91	4.5%	408	4.8%	548	4.8%
Age 25 - 34	231	11.5%	1,017	12.0%	1,262	11.0%
Age 35 - 44	258	12.8%	1,081	12.8%	1,473	12.8%
Age 45 - 54	290	14.4%	1,232	14.5%	1,773	15.4%
Age 55 - 64	288	14.3%	1,159	13.7%	1,668	14.5%
Age 65 - 74	165	8.2%	684	8.1%	938	8.2%
Age 75 - 84	123	6.1%	496	5.9%	614	5.3%
Age 85+	45	2.2%	189	2.2%	225	2.0%

2016 Population by Age	1 mile		3 miles		5 miles	
	Number	Percent	Number	Percent	Number	Percent
Age 0 - 4	110	5.4%	498	5.8%	651	5.6%
Age 5 - 9	117	5.8%	519	6.1%	700	6.0%
Age 10 - 14	130	6.4%	545	6.4%	756	6.5%
Age 15 - 19	114	5.6%	481	5.6%	657	5.7%
Age 20 - 24	117	5.8%	488	5.7%	635	5.5%
Age 25 - 34	233	11.5%	1,034	12.1%	1,324	11.4%
Age 35 - 44	250	12.4%	1,045	12.2%	1,380	11.9%
Age 45 - 54	273	13.5%	1,159	13.6%	1,617	14.0%
Age 55 - 64	284	14.0%	1,153	13.5%	1,693	14.6%
Age 65 - 74	232	11.5%	941	11.0%	1,298	11.2%
Age 75 - 84	108	5.3%	445	5.2%	588	5.1%
Age 85+	56	2.8%	233	2.7%	274	2.4%

2021 Population by Age	1 mile		3 miles		5 miles	
	Number	Percent	Number	Percent	Number	Percent
Age 0 - 4	106	5.2%	479	5.6%	623	5.4%
Age 5 - 9	118	5.8%	519	6.1%	690	5.9%
Age 10 - 14	127	6.2%	545	6.4%	749	6.4%
Age 15 - 19	124	6.1%	511	6.0%	705	6.1%
Age 20 - 24	87	4.3%	379	4.4%	490	4.2%
Age 25 - 34	236	11.6%	1,028	12.0%	1,341	11.5%
Age 35 - 44	262	12.9%	1,078	12.6%	1,404	12.1%
Age 45 - 54	261	12.8%	1,111	13.0%	1,509	13.0%
Age 55 - 64	275	13.5%	1,121	13.1%	1,620	13.9%
Age 65 - 74	257	12.6%	1,036	12.1%	1,486	12.8%
Age 75 - 84	128	6.3%	531	6.2%	715	6.2%
Age 85+	56	2.7%	234	2.7%	284	2.4%

Source: U.S. Census Bureau, Census 2010 Summary File 1. Esri forecasts for 2016 and 2021.



# Demographic and Income Comparison Profile

607 S 4th St, Chillicothe, Illinois, 61523  
Rings: 1, 3, 5 mile radii

Prepared by Esri  
Latitude: 40.90177  
Longitude: -89.49481

2010 Race and Ethnicity	1 mile		3 miles		5 miles	
	Number	Percent	Number	Percent	Number	Percent
White Alone	1,957	97.4%	8,227	97.1%	11,158	97.1%
Black Alone	5	0.2%	26	0.3%	43	0.4%
American Indian Alone	3	0.1%	17	0.2%	24	0.2%
Asian Alone	5	0.2%	24	0.3%	40	0.3%
Pacific Islander Alone	2	0.1%	5	0.1%	6	0.1%
Some Other Race Alone	19	0.9%	84	1.0%	88	0.8%
Two or More Races	18	0.9%	90	1.1%	132	1.1%
Hispanic Origin (Any Race)	60	3.0%	288	3.4%	336	2.9%

2016 Race and Ethnicity	1 mile		3 miles		5 miles	
	Number	Percent	Number	Percent	Number	Percent
White Alone	1,958	96.7%	8,221	96.3%	11,144	96.3%
Black Alone	5	0.2%	29	0.3%	50	0.4%
American Indian Alone	3	0.1%	18	0.2%	25	0.2%
Asian Alone	6	0.3%	29	0.3%	49	0.4%
Pacific Islander Alone	2	0.1%	6	0.1%	7	0.1%
Some Other Race Alone	28	1.4%	120	1.4%	128	1.1%
Two or More Races	23	1.1%	115	1.3%	170	1.5%
Hispanic Origin (Any Race)	86	4.2%	408	4.8%	478	4.1%

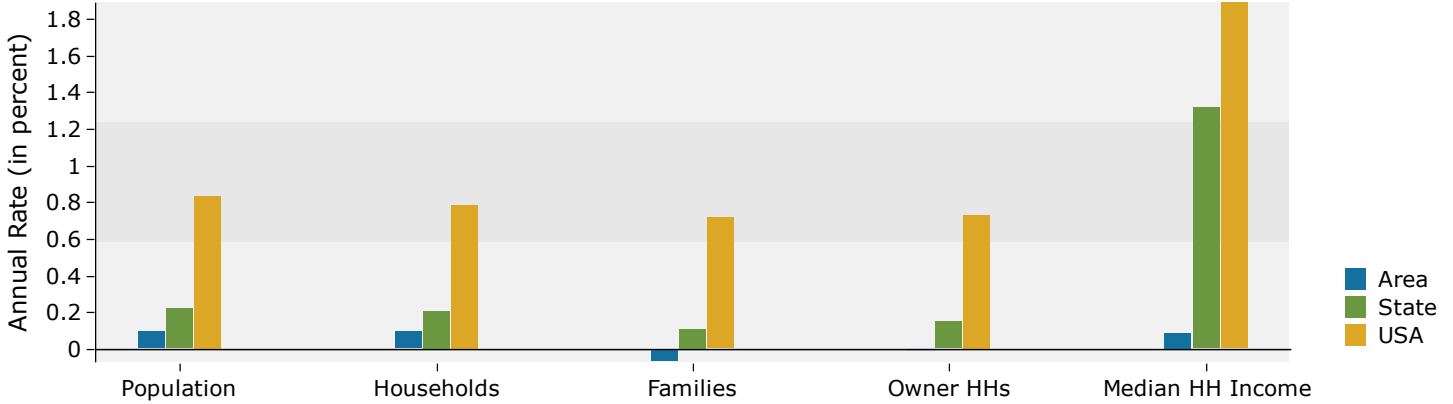
  

2021 Race and Ethnicity	1 mile		3 miles		5 miles	
	Number	Percent	Number	Percent	Number	Percent
White Alone	1,950	95.8%	8,177	95.4%	11,084	95.4%
Black Alone	6	0.3%	32	0.4%	57	0.5%
American Indian Alone	3	0.1%	18	0.2%	26	0.2%
Asian Alone	8	0.4%	36	0.4%	61	0.5%
Pacific Islander Alone	2	0.1%	6	0.1%	7	0.1%
Some Other Race Alone	38	1.9%	161	1.9%	171	1.5%
Two or More Races	29	1.4%	141	1.6%	210	1.8%
Hispanic Origin (Any Race)	114	5.6%	540	6.3%	632	5.4%

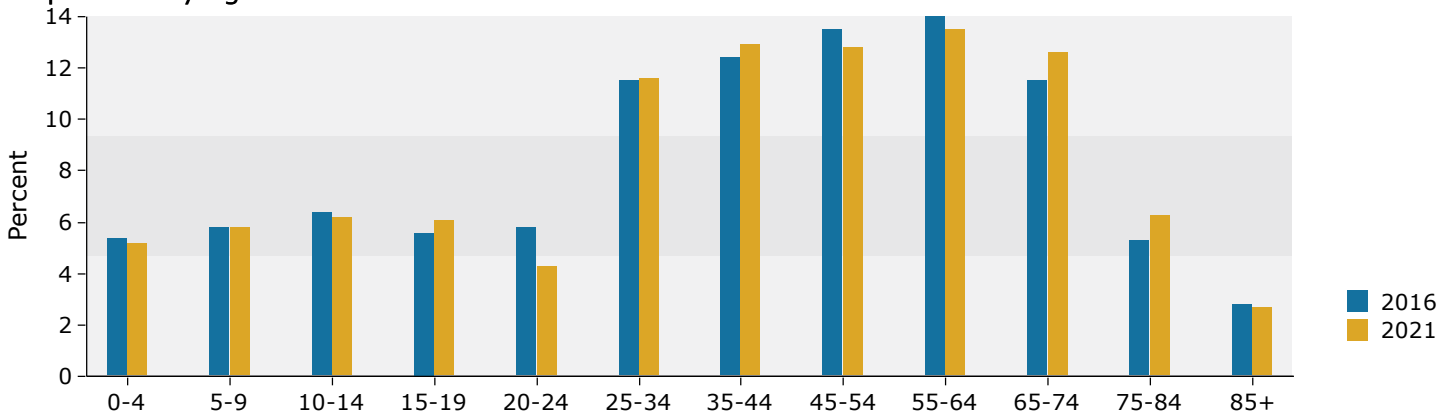
Source: U.S. Census Bureau, Census 2010 Summary File 1. Esri forecasts for 2016 and 2021.

## 1 mile

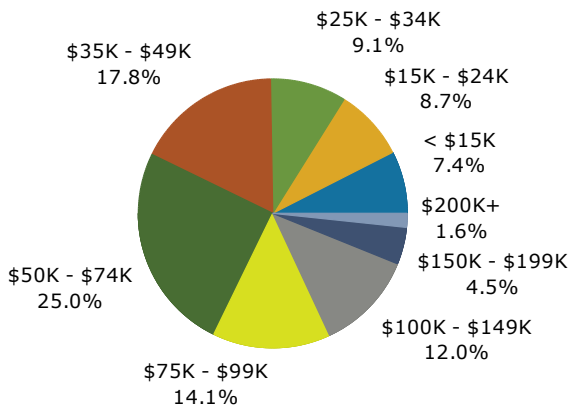
### Trends 2016-2021



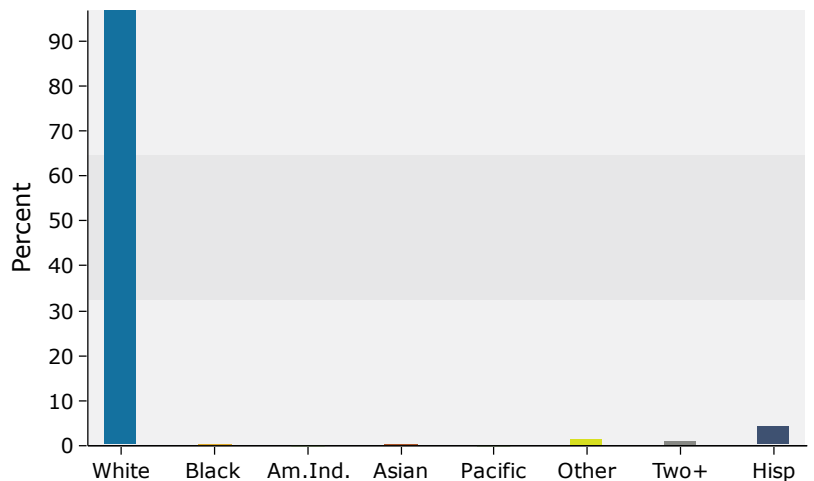
### Population by Age



### 2016 Household Income



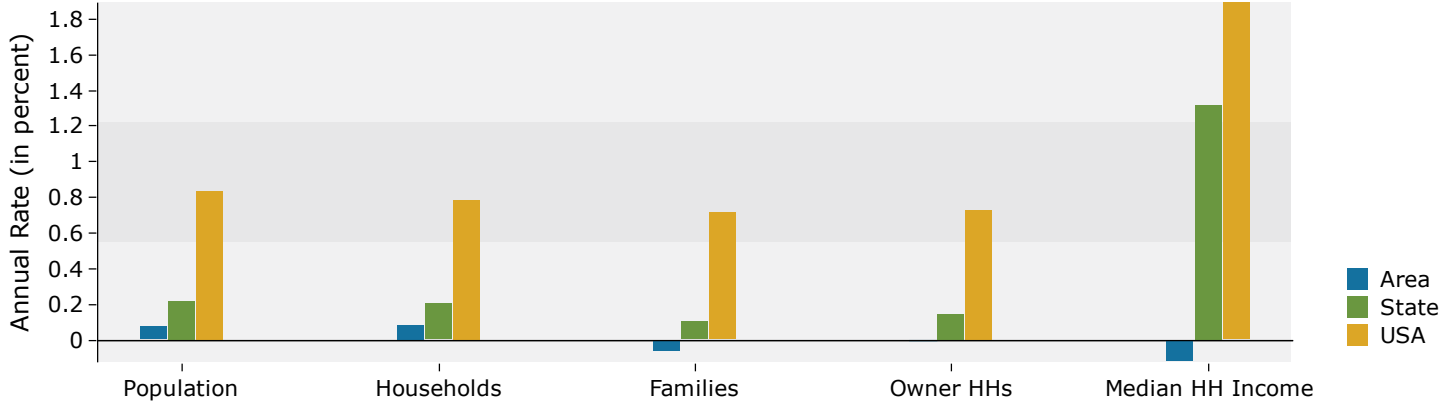
### 2016 Population by Race



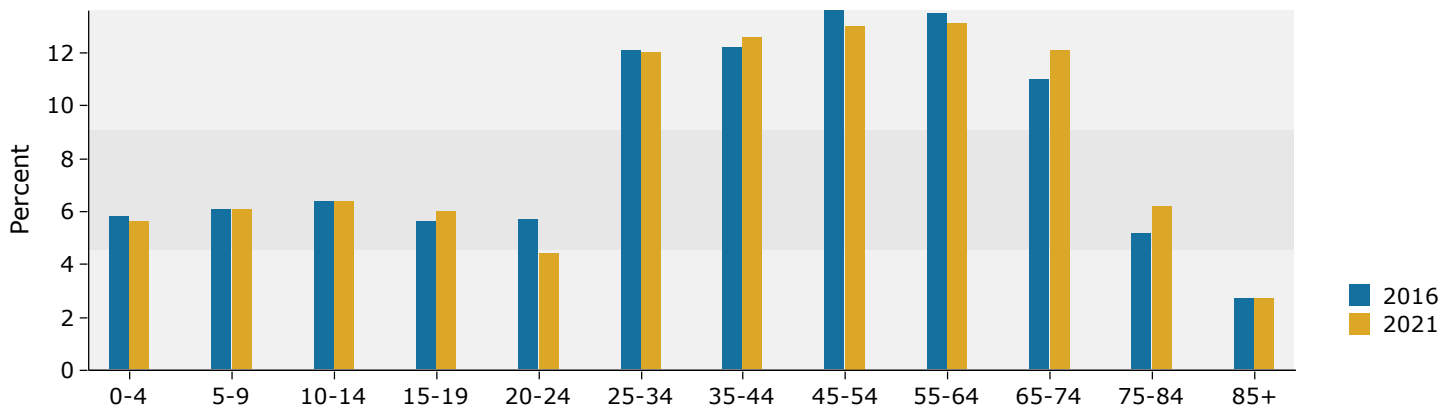
Source: U.S. Census Bureau, Census 2010 Summary File 1. Esri forecasts for 2016 and 2021.

## 3 miles

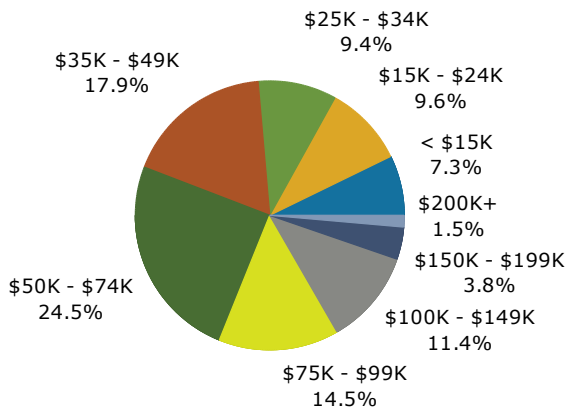
### Trends 2016-2021



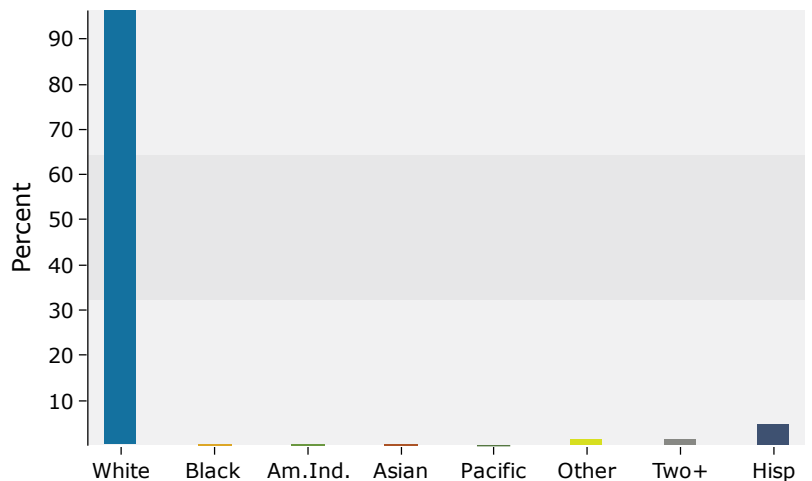
### Population by Age



### 2016 Household Income



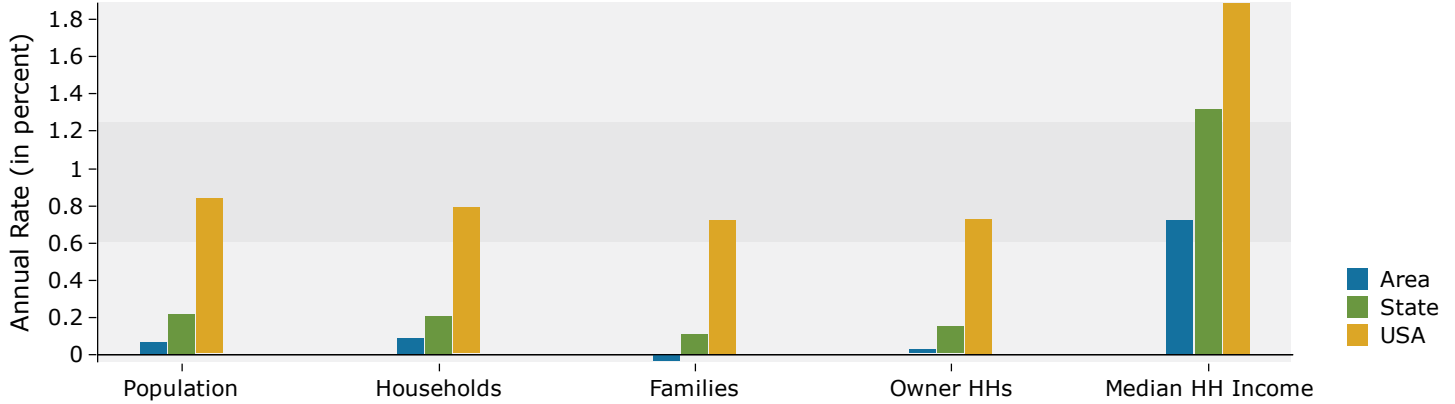
### 2016 Population by Race



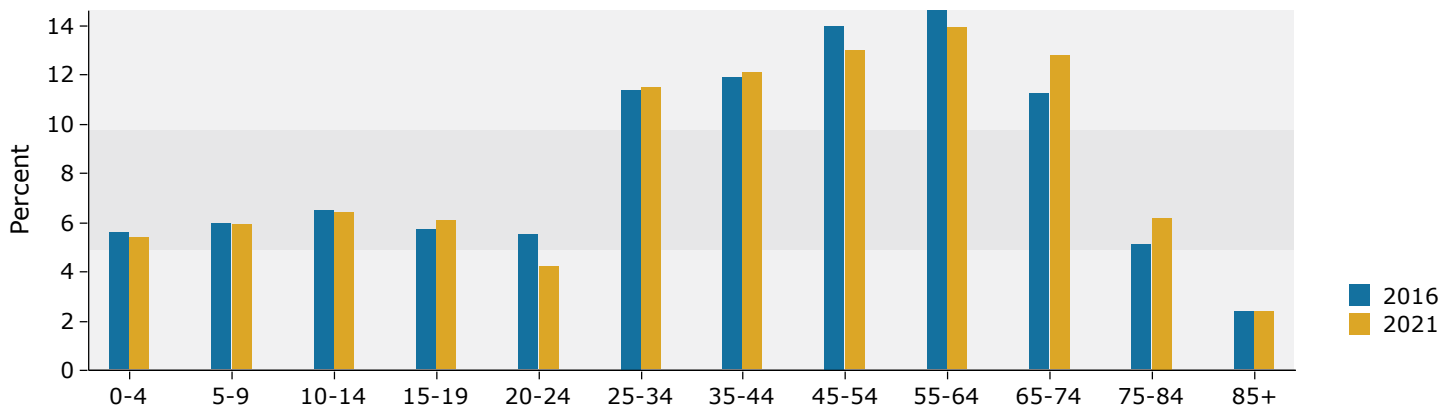
Source: U.S. Census Bureau, Census 2010 Summary File 1. Esri forecasts for 2016 and 2021.

## 5 miles

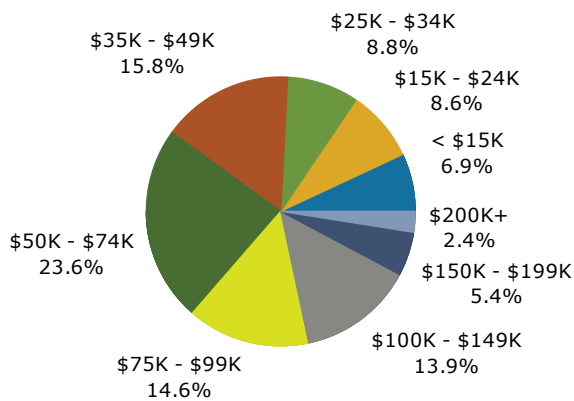
### Trends 2016-2021



### Population by Age



### 2016 Household Income



### 2016 Population by Race

