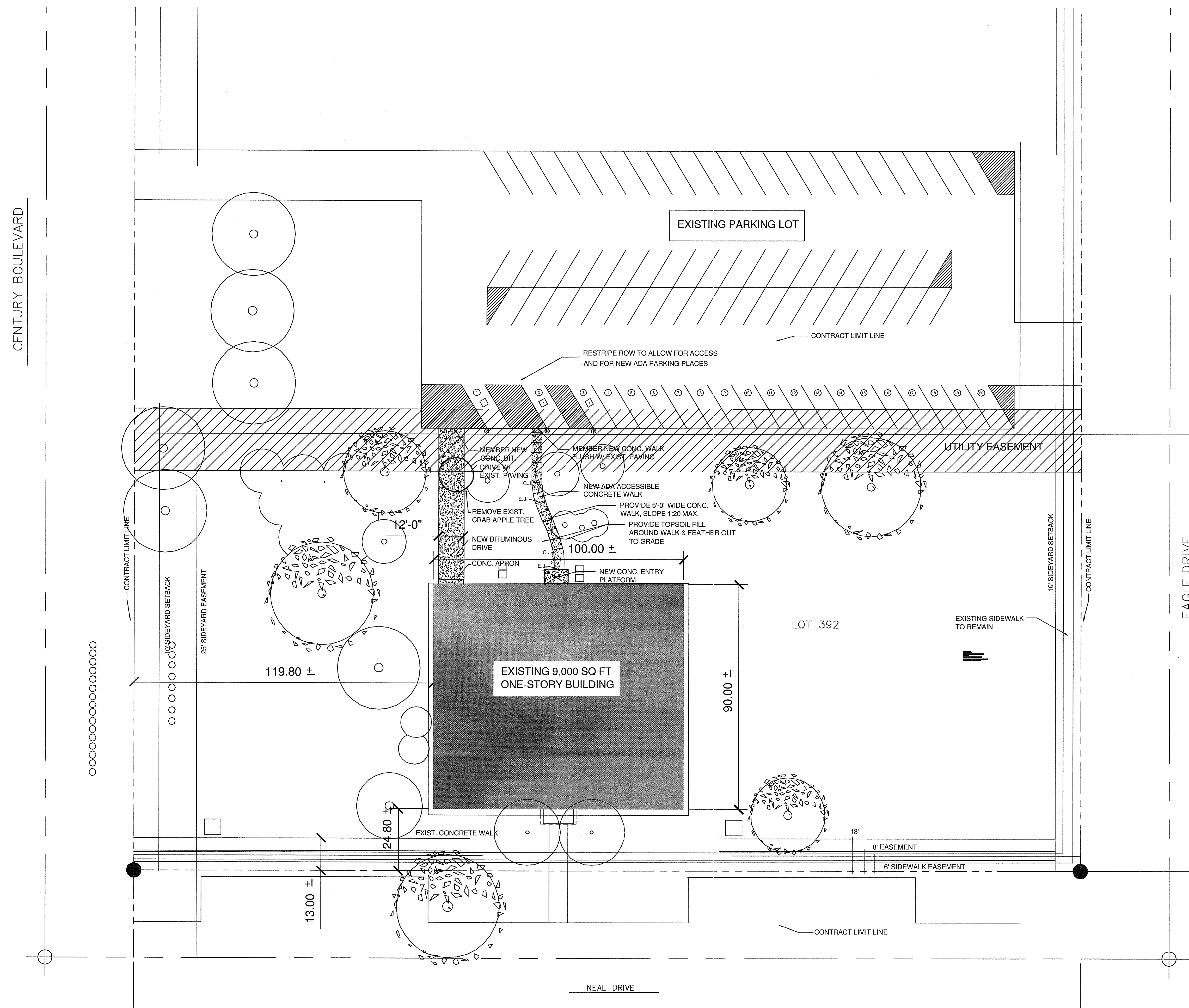


DCF FACILITY REMODELING
309 E. NEAL DRIVE
RANTOUL, IL

No.	Description	Date
Drawing Title		
SITE PLAN		
Date	12 / 01 / 2005	Drawn By
		ELS
Project No.	BED: 0526.2	
Drawing No.		
CS-2		

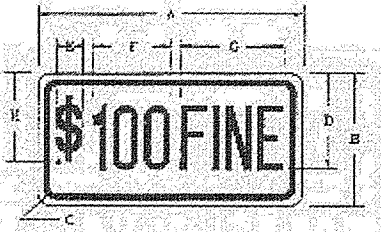


SITE PLAN
SCALE: 1" = 20'

71 ILLINOIS ADMINISTRATIVE CODE CH. I. 6400 ILLUSTRATION SUBCHAPTER 1
Section 400 ILLUSTRATION D "5100 Fine" Sign

Reproduced with permission from the American National Standards Institute.

ILLINOIS STANDARD R7-1101



COLORS: LEGEND AND BORDER GREEN NON-REFLECTORIZED (ARTICLE 341C)
BACKGROUND WHITE REFLECTORIZED

SIGN SIZE	DIMENSIONS							
	A	B	C	D	E	F	G	H
12 x 6	12.0	6.0	1.5	4.5	1.19	3.59	4.6	4.0

BACKGROUNDS: WHITE REFLECTORIZED

SIGN SIZE	SIGN LETTERS	MARGIN	CORNER	BLK. STD.
12 x 6	3A	0.37	0.37	BS-126

Notes: All dimensions in inches. To be used with 10'-0" to 15'-0" signs. 157 Rev. 10/95

71 ILLINOIS ADMINISTRATIVE CODE CH. I. 6400 ILLUSTRATION SUBCHAPTER 1
Section 400 ILLUSTRATION C "Parking" Sign

HANDICAPPED PARKING SIGN

Effective January 1, 1982, Public Act 83-1316 amended Sec. 11-301 of "The Illinois Vehicle Code" to require Handicapped Parking Signs for parking lots subject to "The Illinois Vehicle Code" to be empty with R-7-8 signs shown below (U.S. Department of Transportation Standard). Existing signs may remain, but their useful lives shall not be extended by other means than normal maintenance.



NOTE: This sign is required to be placed in an area reserved for use by handicapped persons. It is to be placed in an area reserved for use by handicapped persons. It is to be placed in an area reserved for use by handicapped persons. It is to be placed in an area reserved for use by handicapped persons.

R7-8
DIMENSIONS (INCHES)

COLORS: LEGEND AND BORDER-PANTONE 340C
WHITE SIGN ON PANTONE 298 BACKGROUND
BACKGROUND-ORANGE

157 Rev. 12/95

⊙ INDICATES LOCATION FOR SIGNAGE.
SIGNS MUST CONFORM TO THE
STANDARDS SHOWN HERE

CENTURY BOULEVARD

EAGLE DRIVE

NEAL DRIVE